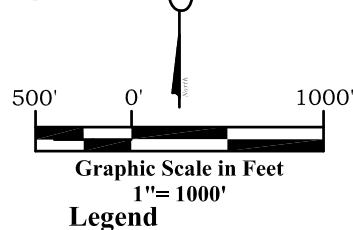
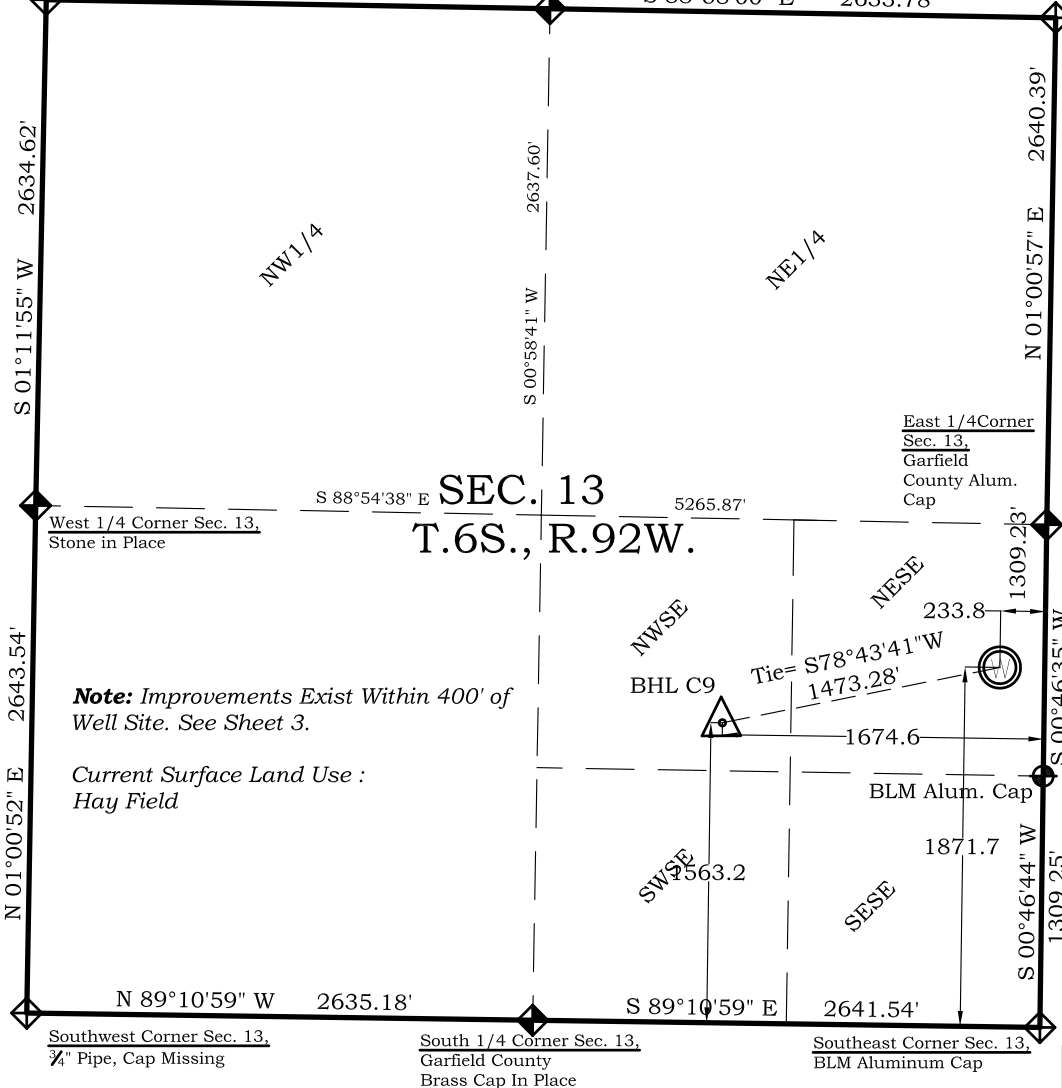


Well Location Plat McLin C9

Section 13, Township 6 South, Range 92 West

Northwest Corner Sec. 13, County Surveyor Alum. Cap S 88°58'49" E 2623.68' North 1/4 Corner Sec. 13, County Surveyor Alum. Cap S 88°58'00" E 2633.78' Northeast Corner Sec. 13, BLM Aluminum Cap



- Field Surveyed Section Corner
- Field Surveyed Quarter Corner
- Calculated Section Corner Location
- Field Surveyed 1/6 Corner

Surface: McLin C9

1872' FSL
234' FEL
Gnd El= 5725.2
Pad El= 5726.0
NAD83
Lat: 39.525175678°N
Long: 107.607176277°W
NAD27
Lat: 39.525195069°N
Long: 107.606563265°W
UTM 13 NORTH
NAD 1983
NORTHING
14364487.715
EASTING
905193.705

Bottom Hole: McLin C9

1563' FSL
1675' FEL
NAD83
Lat: 39.524270604°N
Long: 107.612265288°W
NAD27
Lat: 39.5242942°N
Long: 107.6116521°W

Prepared For Antero Resources
Proposed McLin C9 Well Situate in The NE 1/4 SE 1/4 Section
13, Township 6 South, Range 92 West of the 6 th. Principal
Meridian, County of Garfield, State of Colorado

SURVEYOR'S CERTIFICATE

I, SCOTT E. AIBNER, A REGISTERED LAND SURVEYOR, LICENSED UNDER THE LAWS OF THE STATE OF COLORADO DO HEREBY CERTIFY THAT THE SURVEY SHOWN HEREON WAS PREPARED BY RIVER VALLEY SURVEY, INC., FOR ANTERO RESOURCES, BY ME OR UNDER MY DIRECT SUPERVISION AND THAT THIS PLAT IS A TRUE REPRESENTATION THEREOF.

31143
SCOTT E. AIBNER, COLORADO REG. NO. 31143

Notes:

- LATITUDE AND LONGITUDE COORDINATES ARE DIFFERENTIALLY CORRECTED AND BASED ON PUBLISHED NGS CONTROL STATION "WDP-5". SYSTEM: UTM ZONE: 13 NORTH DATUM: NAD 1983 (CONUS)
- ELEVATIONS ARE BASED ON NAVD OF 1983.
- ALL BOTTOM AND TOP HOLE LOCATIONS ARE MEASURED 90 DEGREES FROM SECTION LINE.
- USGS QUADRANGLE MAP "SILT".
- CURRENT SURFACE LAND USE: HAY FIELD.
- PDOP AT THE TIME OF LOCATION OF SURFACE WELL = 2.4



River Valley Survey, Inc.
110 East 3rd. Street, Suite 213
Rifle, Colorado 81650
Ph: 970-379-7846

Project: McLin C PAD

Field Date: 01-19-10

Date: 10-15-10

Scale: 1"= 1000'

Sheet: 1 of 11

Well Location Plat
Prepared For Antero Resources

Situate In:
SE 1/4 Section 13, T6S., R. 92 W. of the
6th P.M., Garfield County, Colorado

