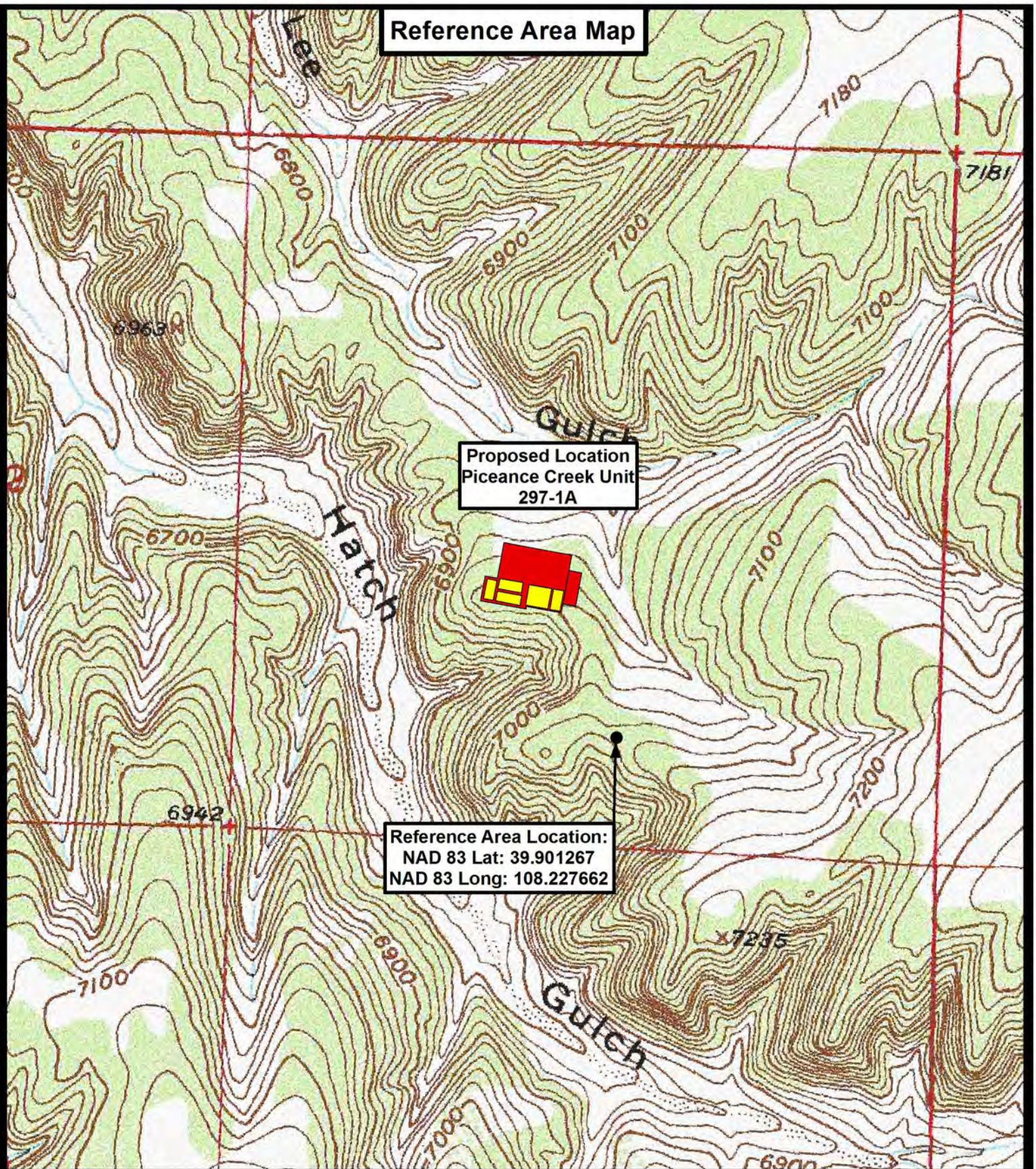


Reference Area Map



Proposed Location
Piceance Creek Unit
297-1A

Reference Area Location:
NAD 83 Lat: 39.901267
NAD 83 Long: 108.227662

 **Tri State**
Land Surveying, Inc.
180 NORTH VERNAL AVE. VERNAL, UTAH 84078

P: (435) 781-2501
F: (435) 781-2518



ExxonMobil Oil Corporation

Piceance Creek Unit 297-1A
SEC. 1, T2S, R97W, 6th P.M.
Rio Blanco County, CO.

DRAWN BY:	J.A.S.
DATE:	07-22-2010
SCALE:	1" = 1,000'

TOPOGRAPHIC MAP

SHEET
R