

T2S, R97W, 6th P.M.

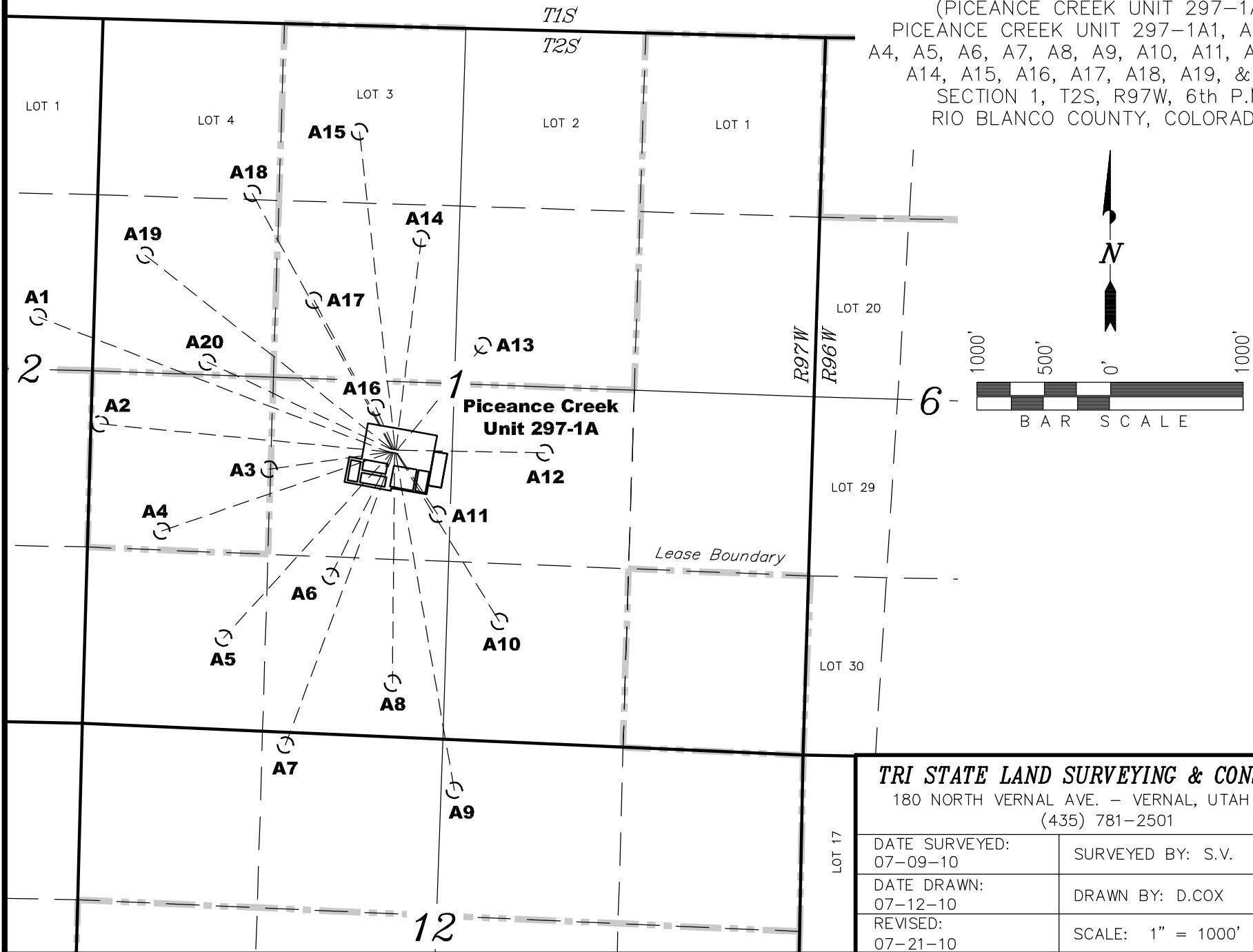
ExxonMobil Oil Corporation

**MULTI-WELL PLAN**

(PICEANCE CREEK UNIT 297-1A)

PICEANCE CREEK UNIT 297-1A1, A2, A3,  
A4, A5, A6, A7, A8, A9, A10, A11, A12, A13,  
A14, A15, A16, A17, A18, A19, & A20

SECTION 1, T2S, R97W, 6th P.M.  
RIO BLANCO COUNTY, COLORADO.



**TRI STATE LAND SURVEYING & CONSULTING**

180 NORTH VERNAL AVE. - VERNAL, UTAH 84078  
(435) 781-2501

DATE SURVEYED: 07-09-10	SURVEYED BY: S.V.	SHEET <b>1</b>
DATE DRAWN: 07-12-10	DRAWN BY: D.COX	
REVISED: 07-21-10	SCALE: 1" = 1000'	