

# ExxonMobil Oil Corporation

## ADDENDUM TO LEGAL PLATS FOR

WELL PAD (PICEANCE CREEK UNIT 297-1A)

PICEANCE CREEK UNIT 297-1A1, A2, A3, A4, A5, A6, A7, A8,

A9, A10, A11, A12, A13, A14, A15, A16, A17, A18, A19 & A20

Section 1, T2S, R97W, 6th P.M.

1/16 Section Line

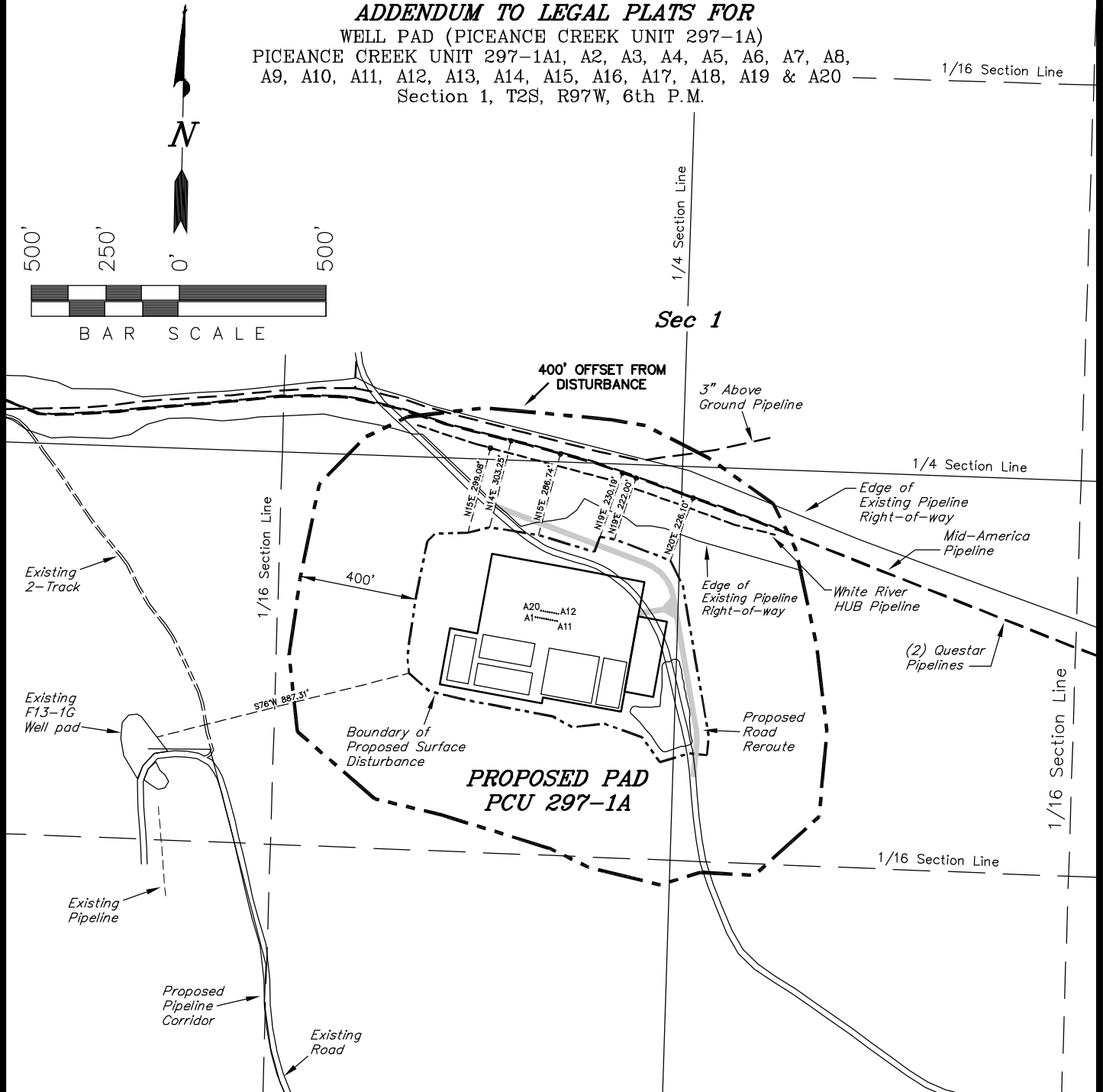
1/4 Section Line

Sec 1

1/4 Section Line

1/16 Section Line

1/16 Section Line



### Distances from Well Heads

WELL	BUILDING	ABOVE GROUND UTILITY	PUBLIC ROAD	RAILROAD	WELL	BUILDING	ABOVE GROUND UTILITY	PUBLIC ROAD	RAILROAD
A1	S83°E 8778'	N14°E 600'	N17°E 230'	S21°E 32 Miles	A11	S83°E 8703'	N14°E 595'	N17°E 221'	S21°E 32 Miles
A2	S83°E 8770'	N14°E 599'	N17°E 229'	S21°E 32 Miles	A12	S82°E 8702'	N14°E 570'	N17°E 196'	S21°E 32 Miles
A3	S83°E 8763'	N14°E 599'	N17°E 228'	S21°E 32 Miles	A13	S82°E 8709'	N14°E 570'	N17°E 197'	S21°E 32 Miles
A4	S83°E 8756'	N14°E 598'	N17°E 227'	S21°E 32 Miles	A14	S82°E 8717'	N14°E 571'	N17°E 198'	S21°E 32 Miles
A5	S83°E 8748'	N14°E 598'	N17°E 226'	S21°E 32 Miles	A15	S82°E 8724'	N14°E 571'	N17°E 199'	S21°E 32 Miles
A6	S83°E 8741'	N14°E 597'	N17°E 225'	S21°E 32 Miles	A16	S82°E 8732'	N14°E 572'	N17°E 199'	S21°E 32 Miles
A7	S83°E 8733'	N14°E 597'	N17°E 224'	S21°E 32 Miles	A17	S82°E 8739'	N14°E 572'	N17°E 200'	S21°E 32 Miles
A8	S83°E 8726'	N14°E 596'	N17°E 223'	S21°E 32 Miles	A18	S82°E 8747'	N14°E 573'	N17°E 201'	S21°E 32 Miles
A9	S83°E 8718'	N14°E 596'	N17°E 222'	S21°E 32 Miles	A19	S82°E 8754'	N14°E 573'	N17°E 202'	S21°E 32 Miles
A10	S83°E 8711'	N14°E 595'	N17°E 222'	S21°E 32 Miles	A20	S82°E 8762'	N14°E 574'	N17°E 203'	S21°E 32 Miles

SURVEYED BY: S.V. SURVEY DATE: 07-09-10  
 DRAWN BY: F.T.M. DATE DRAWN: 07-13-10  
 SCALE: 1" = 500' REVISED: 07-22-10

**Tri State**  
 Land Surveying, Inc.  
 180 NORTH VERNAL AVE. VERNAL, UTAH 84078  
 (435) 781-2501

SHEET  
 1u