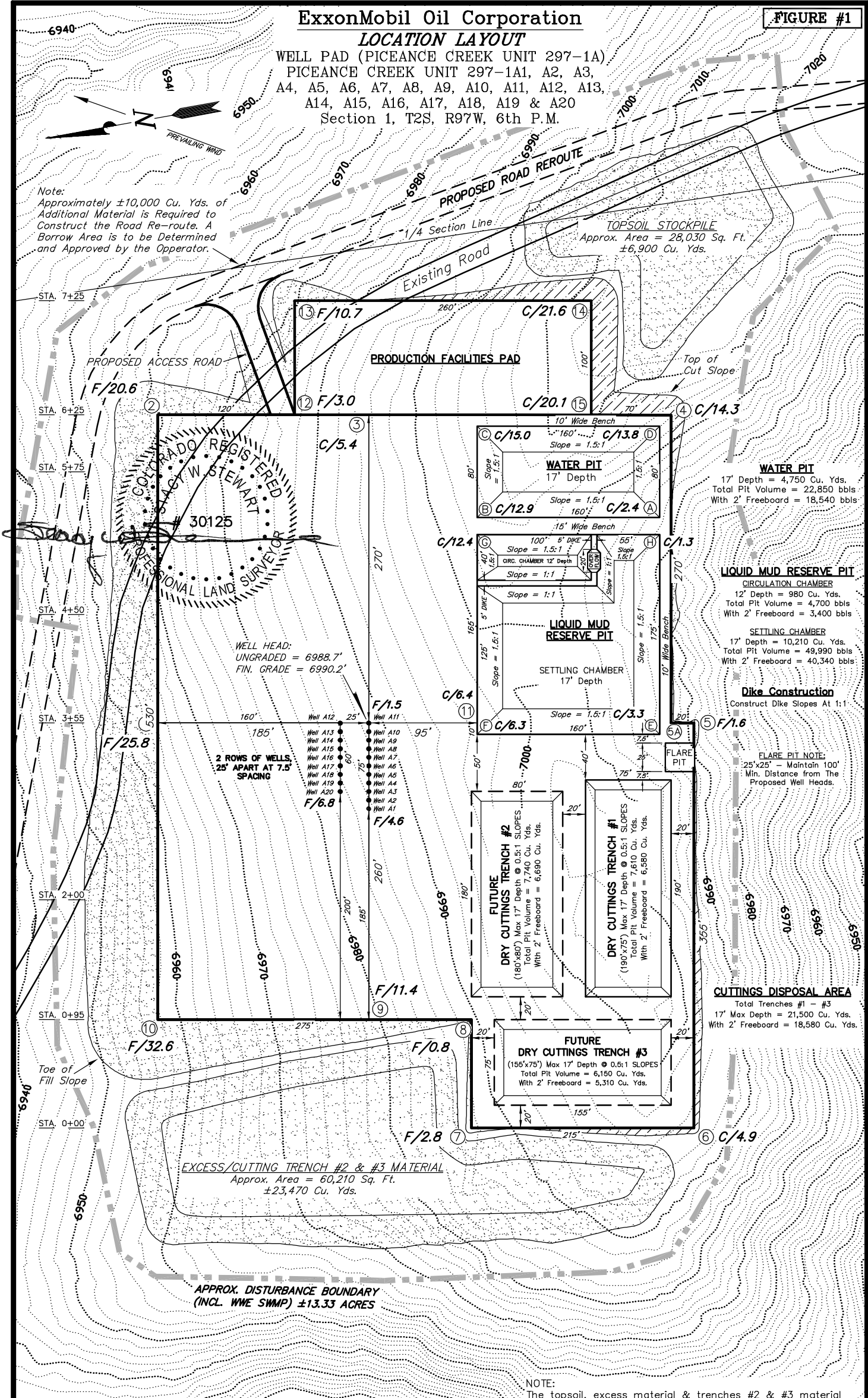


LOCATION LAYOUT

WELL PAD (PICEANCE CREEK UNIT 297-1A),  
PICEANCE CREEK UNIT 297-1A1, A2, A3,  
A4, A5, A6, A7, A8, A9, A10, A11, A12, A13,  
A14, A15, A16, A17, A18, A19 & A20  
Section 1, T2S, R97W, 6th P.M.

Note:  
Approximately ±10,000 Cu. Yds. of  
Additional Material is Required to  
Construct the Road Re-route. A  
Borrow Area is to be Determined  
and Approved by the Operator.



NOTE:  
CUTS AND FILLS SHOWN ARE FOR THE INITIAL CONSTRUCTION OF PAD TO A  
SINGLE & LEVEL ELEVATION. ADDITIONAL EARTHWORK IS REQUIRED TO COMPLETE  
THE FINISH GRADING PLAN AS SHOWN ON SHEET 5.

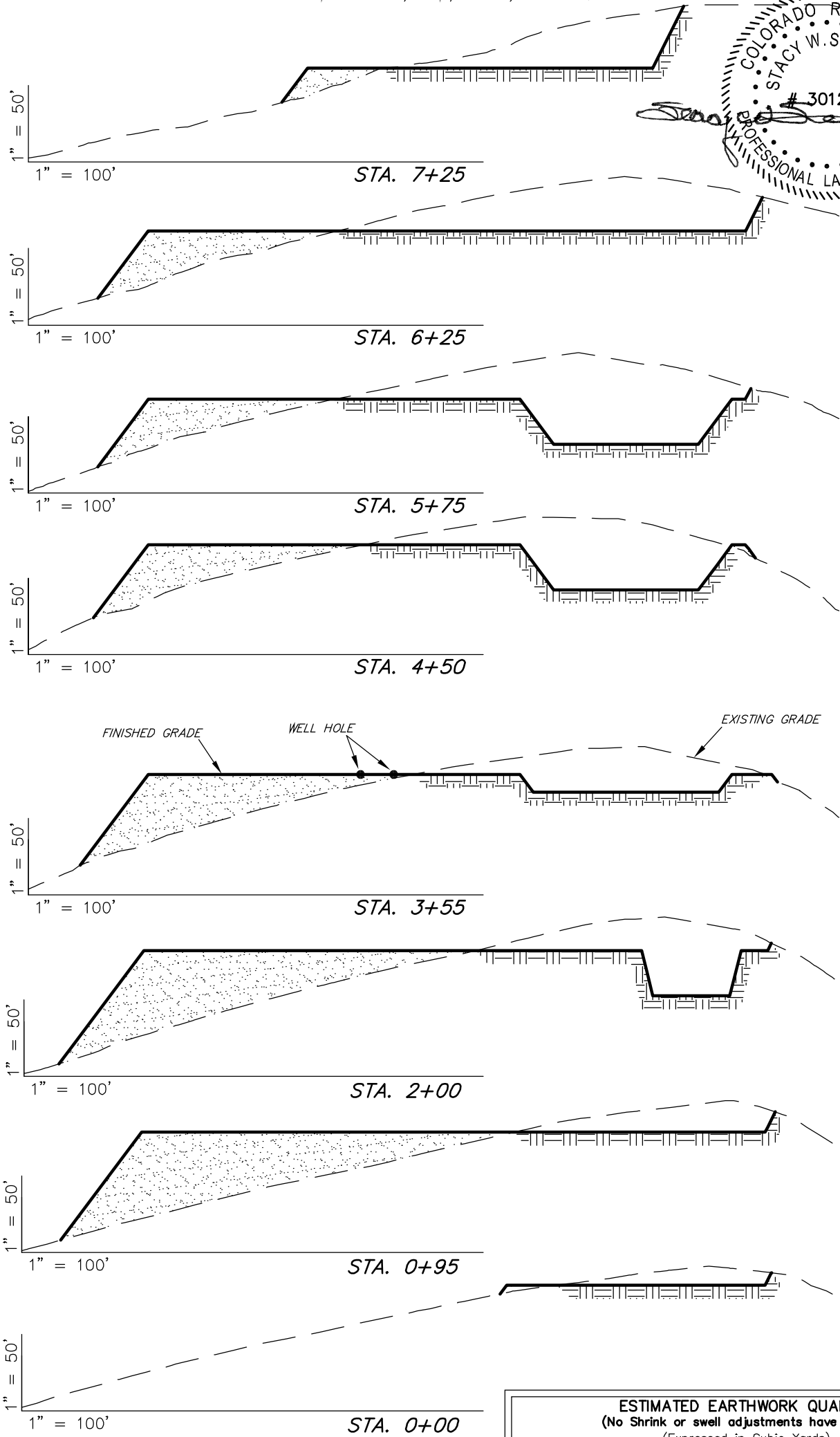
NOTE:  
The topsoil, excess material & trenches #2 & #3 material  
areas are calculated as being mounds containing 30,370  
cubic yards of dirt (a 10% fluff factor is included). The  
mound areas are calculated with push slopes of 1.5:1 & fall  
slopes of 1.5:1.

SURVEYED BY:	D.P.	DATE SURVEYED:	01-01-07
DRAWN BY:	R.V.C.	DATE DRAWN:	10-20-09
SCALE:	1" = 100'	REVISED:	07-22-10 D.COX

Tri State  
Land Surveying, Inc.  
180 NORTH VERNAL AVE. VERNAL, UTAH 84078

CROSS SECTIONS

WELL PAD (PICEANCE CREEK UNIT 297-1A)  
PICEANCE CREEK UNIT 297-1A1, A2, A3, A4, A5, A6, A7, A8,  
A9, A10, A11, A12, A13, A14, A15, A16, A17, A18, A19 & A20  
Section 1, T2S, R97W, 6th P.M.



- NOTES:
- 1.) UNLESS OTHERWISE NOTED, CUT SLOPES ARE AT 1:1 & FILL SLOPES ARE AT 1.5:1.
  - 2.) USE ±10,000 CU. YDS. EXCESS MATERIAL TO CONSTRUCT ROAD REROUTE.

ESTIMATED EARTHWORK QUANTITIES (No Shrink or swell adjustments have been used) (Expressed in Cubic Yards)				
ITEM	CUT	FILL	6" TOPSOIL	EXCESS
CUTTINGS TRENCH #1	7,610	0	Topsoil is not included in Pad Cut	7,610
PITS	15,940	0		15,940
PAD	54,410	70,130	6,270	-16,100
TOTALS	77,960	70,130	6,270	7,450

SURVEYED BY: D.P.	DATE SURVEYED: 01-01-07
DRAWN BY: R.V.C.	DATE DRAWN: 10-20-09
SCALE: 1" = 100'	REVISED: 07-22-10 D.COX

**Tri State**  
Land Surveying, Inc.  
180 NORTH VERNAL AVE. VERNAL, UTAH 84078  
(435) 781-2501