

Access Road Map

NORTH PICEANCE UNIT

PICEANCE CREEK UNIT

FREEDOM UNIT

EXPANDED LIBERTY UNIT

Legend

- Proposed Road
- Existing Road

Proposed Location
Piceance Creek Unit
297-1A

See Topo "B"

± 0.3 mi.
± 0.3 mi.
± 0.3 mi.
± 0.5 mi.
± 0.9 mi.
± 0.3 mi.
± 0.6 mi.
± 0.7 mi.

± 4.7 mi.

Rio Blanco ± 17.8 mi.
Rifle ± 36.6 mi.

Tri State
Land Surveying, Inc.
180 NORTH VERNAL AVE. VERNAL, UTAH 84078

P: (435) 781-2501
F: (435) 781-2518



ExxonMobil Oil Corporation

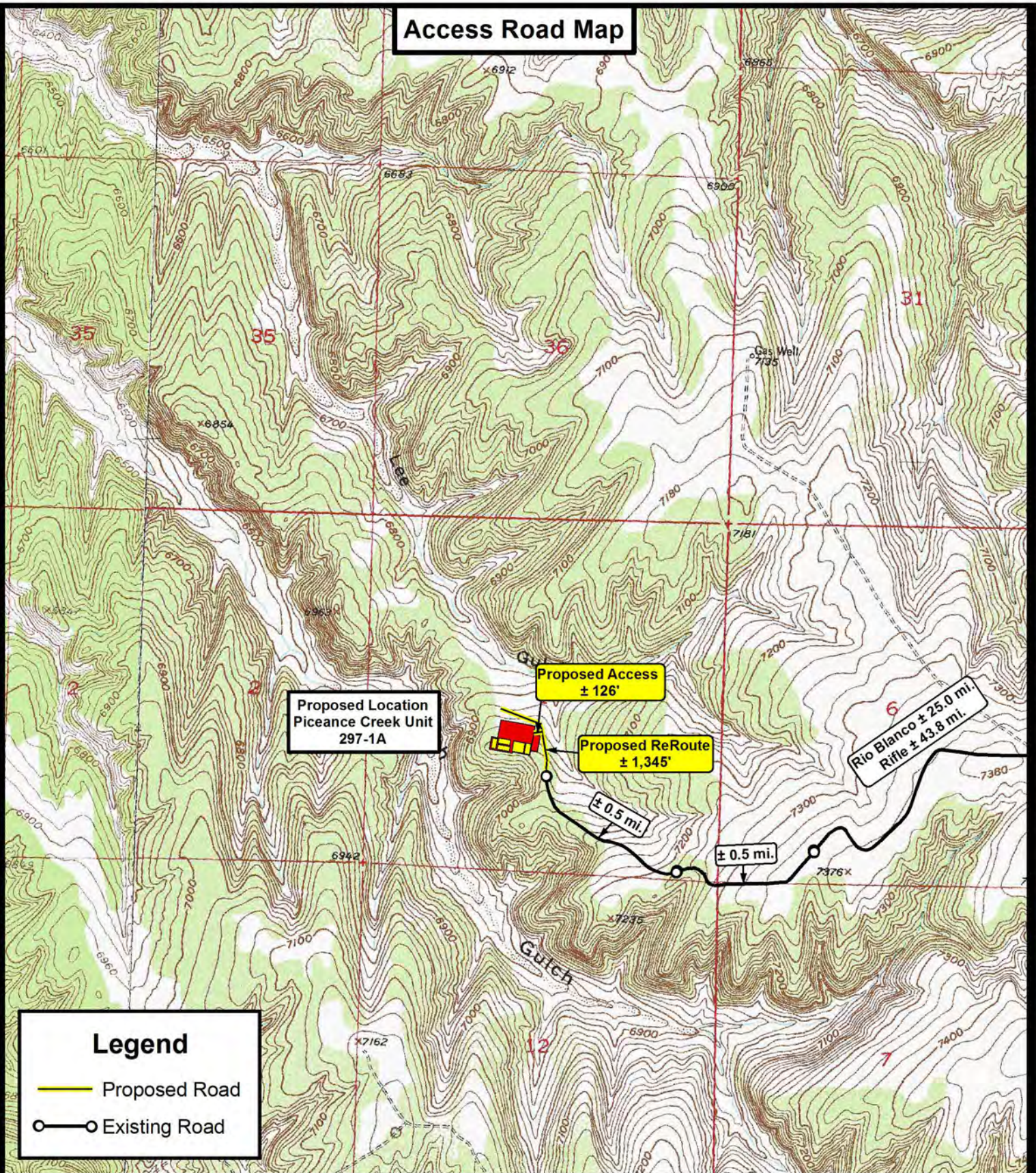
Piceance Creek Unit 297-1A
SEC. 1, T2S, R97W, 6th P.M.
Rio Blanco County, CO.

DRAWN BY: J.A.S.
DATE: 07-22-2010
SCALE: 1:100,000

TOPOGRAPHIC MAP

SHEET
A

Access Road Map



Tri State
Land Surveying, Inc.

180 NORTH VERNAL AVE. VERNAL, UTAH 84078

P: (435) 781-2501
F: (435) 781-2518



ExxonMobil Oil Corporation

Piceance Creek Unit 297-1A
SEC. 1, T2S, R97W, 6th P.M.
Rio Blanco County, CO.

DRAWN BY: J.A.S.
DATE: 07-22-2010
SCALE: 1" = 2,000'

TOPOGRAPHIC MAP

SHEET

B