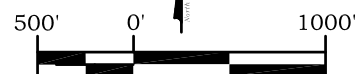
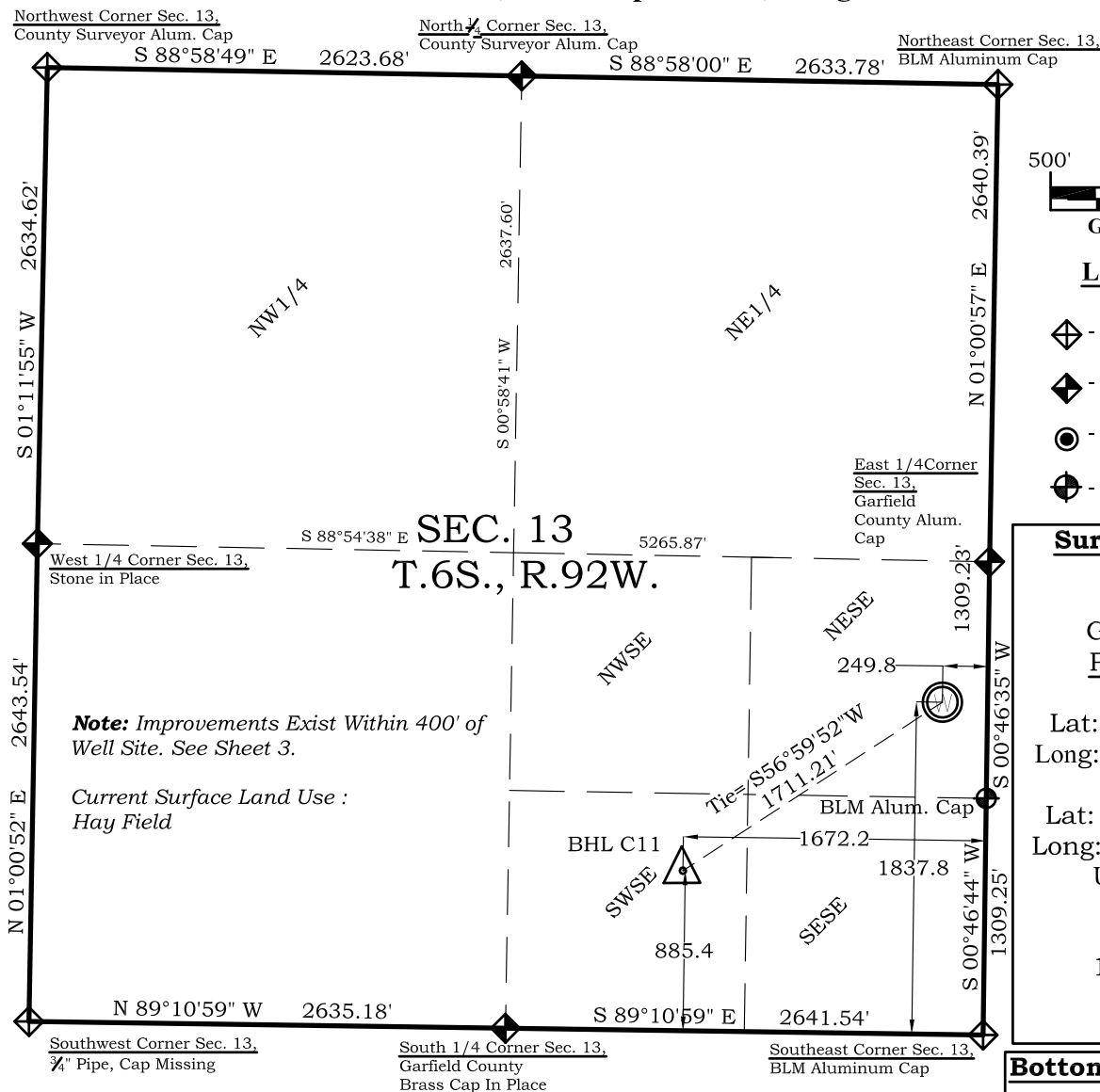


# Well Location Plat

## McLin C11

### Section 13, Township 6 South, Range 92 West



Graphic Scale in Feet

1"=1000'

#### Legend

- Field Surveyed Section Corner
- Field Surveyed Quarter Corner
- Calculated Section Corner Location
- Field Surveyed 1/6 Corner

#### Surface: McLin C11

1838' FSL

250' FEL

Gnd El= 5725.2

Pad El= 5726.0

**NAD83**

Lat: 39.525081939°N

Long: 107.607231167°W

**NAD27**

Lat: 39.525101330°N

Long: 107.606618154°W

UTM 13 NORTH

**NAD 1983**

NORTHING

14364454.026

EASTING

905177.235

#### Bottom Hole: McLin C11

885' FSL

1672' FEL

**NAD83**

Lat: 39.522410603°N

Long: 107.612219362°W

**NAD27**

Lat: 39.5224336°N

Long: 107.6116062°W

#### Prepared For Antero Resources

Proposed McLin C11 Well Situate in The NE 1/4 SE 1/4 Section 13, Township 6 South, Range 92 West of the 6 th. Principal Meridian, County of Garfield, State of Colorado

#### SURVEYOR'S CERTIFICATE

I, SCOTT E. AIBNER, A REGISTERED LAND SURVEYOR, LICENSED UNDER THE LAWS OF THE STATE OF COLORADO DO HEREBY CERTIFY THAT THE SURVEY SHOWN HEREON WAS PREPARED BY RIVER VALLEY SURVEY, INC., FOR ANTERO RESOURCES, BY ME OR UNDER MY DIRECT SUPERVISION AND THAT THIS PLAT IS A TRUE REPRESENTATION THEREOF.

31143

BY:

SCOTT E. AIBNER, COLORADO REG. NO. 31143

#### Notes:

- LATITUDE AND LONGITUDE COORDINATES ARE DIFFERENTIALLY CORRECTED AND BASED ON PUBLISHED NGS CONTROL STATION "WDP-5". SYSTEM: UTM ZONE: 13 NORTH DATUM: NAD 1983 (CONUS)
- ELEVATIONS ARE BASED ON NAVD OF 1983.
- ALL BOTTOM AND TOP HOLE LOCATIONS ARE MEASURED 90 DEGREES FROM SECTION LINE.
- USGS QUADRANGLE MAP "SILT".
- CURRENT SURFACE LAND USE: HAY FIELD.
- PDOP AT THE TIME OF LOCATION OF SURFACE WELL = 2.4



**River Valley Survey, Inc.**  
110 East 3rd. Street, Suite 213  
Rifle, Colorado 81650  
Ph: 970-379-7846

Project: McLin C PAD

Field Date: 01-19-10

Date: 08-09-10

Scale: 1"= 1000'

Sheet: 1 of 11

**Well Location Plat**  
**Prepared For Antero Resources**

Situate In:  
SE 1/4 Section 13, T6S., R. 92 W. of the  
6th P.M., Garfield County, Colorado

