
OXY GRAND JUNCTION EBUSINESS

**CC 697-16-56B
PICEANCE
Garfield County , Colorado**

Cement Surface Casing
20-Jan-2010

Job Site Documents

The Road to Excellence Starts with Safety

Sold To #: 344034	Ship To #: 2763821	Quote #:	Sales Order #: 7126309
Customer: OXY GRAND JUNCTION EBUSINESS	Customer Rep: Benavides, Simon		
Well Name: CC	Well #: 697-16-56B	API/UWI #:	
Field: PICEANCE	City (SAP): PARACHUTE	County/Parish: Garfield	State: Colorado
Contractor: OXY	Rig/Platform Name/Num: OXY		
Job Purpose: Cement Surface Casing			
Well Type: Development Well	Job Type: Cement Surface Casing		
Sales Person: DUNNING, DUSTIN	Srvc Supervisor: NELSON, RYAN	MBU ID Emp #:	386514

Job Personnel

HES Emp Name	Exp Hrs	Emp #	HES Emp Name	Exp Hrs	Emp #	HES Emp Name	Exp Hrs	Emp #
GALLEGOS, JASON Michael	18.5	386647	GREGORY, JON D	18.5	439067	HUGENTOBLE, LOGAN Mark	18.5	447333
MOGK, JOHN	18.5	465036	NELSON, RYAN Cody	18.5	386514	STILLSON, ERIC W	18.5	393789
TALAROVICH, JEREMY Jay	18.5	425449						

Equipment

HES Unit #	Distance-1 way	HES Unit #	Distance-1 way	HES Unit #	Distance-1 way	HES Unit #	Distance-1 way
10011429	120 mile	10296148C	120 mile	10783473	120 mile	10804567	120 mile
10822535	120 mile	10856450	120 mile	10857016	120 mile	10938658	120 mile
10951245	120 mile						

Job Hours

Date	On Location Hours	Operating Hours	Date	On Location Hours	Operating Hours	Date	On Location Hours	Operating Hours
1-19-10	15.5	8.5	1-20-10	2.5	2			
TOTAL			Total is the sum of each column separately					

Job

Job Times

Formation Name	Formation Depth (MD)	Top	Bottom	Called Out	Date	Time	Time Zone
Form Type			BHST	On Location	19 - Jan - 2010	08:00	MST
Job depth MD	2763. ft		Job Depth TVD	Job Started	19 - Jan - 2010	11:20	MST
Water Depth			Wk Ht Above Floor	Job Completed	20 - Jan - 2010	00:45	MST
Perforation Depth (MD)	From	To		Departed Loc	20 - Jan - 2010	02:30	MST

Well Data

Description	New / Used	Max pressure psig	Size in	ID in	Weight lbm/ft	Thread	Grade	Top MD ft	Bottom MD ft	Top TVD ft	Bottom TVD ft
Open Hole				14.75				0	2763.		
Surface Casing			9.625	8.921	36.			0	2721.		

Sales/Rental/3rd Party (HES)

Description	Qty	Qty uom	Depth	Supplier
PLUG,CMTG,TOP,9 5/8,HWE,8.16 MIN/9.06 MA	1	EA		
PORT. DAS W/CEMWIN;ACQUIRE W/HES, ZI	1	JOB		
ADC (AUTO DENSITY CTRL) SYS, /JOB,ZI	1	JOB		

Tools and Accessories

Type	Size	Qty	Make	Depth	Type	Size	Qty	Make	Depth	Type	Size	Qty	Make
Guide Shoe					Packer					Top Plug	9 5/8	1	HES
Float Shoe					Bridge Plug					Bottom Plug			
Float Collar					Retainer					SSR plug set			
Insert Float										Plug Container	9 5/8	1	HES
Stage Tool										Centralizers			

Miscellaneous Materials

Gelling Agt	Conc	Surfactant	Conc	Acid Type	Qty	Conc	%
Treatment Fld	Conc	Inhibitor	Conc	Sand Type	Size		Qty

Fluid Data									
Stage/Plug #: 1									
Fluid #	Stage Type	Fluid Name	Qty	Qty uom	Mixing Density lbm/gal	Yield ft ³ /sk	Mix Fluid Gal/sk	Rate bbl/min	Total Mix Fluid Gal/sk
1	WATER SPACER		20.00	bbl	8.33	.0	.0	.0	
2	SUPER FLUSH 101	SUPER FLUSH 101 - SBM (12199)	20.00	bbl	10.	.0	.0	.0	
3	WATER SPACER		20.00	bbl	8.33	.0	.0	.0	
4	Lead Cement	VERSACEM (TM) SYSTEM (452010)	1300.0	sacks	12.3	2.33	12.62		12.62
5	Tail Cement	VERSACEM (TM) SYSTEM (452010)	125	sacks	12.8	2.07	10.67		10.67
6	DISPLACEMENT		207.00	bbl	8.33	.0	.0	.0	
7	Topout Cement	HALCEM (TM) SYSTEM (452986)	400	sacks	14.	1.78	7.67		7.67
Calculated Values		Pressures		Volumes					
Displacement	207	Shut In: Instant		Lost Returns	Yes	Cement Slurry	713	Pad	
Top Of Cement	0	5 Min		Cement Returns	Yes	Actual Displacement	207	Treatment	
Frac Gradient		15 Min		Spacers		Load and Breakdown		Total Job	
Rates									
Circulating		Mixing	6	Displacement	6	Avg. Job	6		
Cement Left In Pipe	Amount	42.5 ft	Reason	Shoe Joint					
Frac Ring # 1 @	ID	Frac ring # 2 @	ID	Frac Ring # 3 @	ID	Frac Ring # 4 @	ID		
The Information Stated Herein Is Correct				Customer Representative Signature					

The Road to Excellence Starts with Safety

Sold To #: 344034		Ship To #: 2763821		Quote #:		Sales Order #: 7126309	
Customer: OXY GRAND JUNCTION EBUSINESS				Customer Rep: Benavides, Simon			
Well Name: CC			Well #: 697-16-56B		API/UWI #:		
Field: PICEANCE		City (SAP): PARACHUTE		County/Parish: Garfield		State: Colorado	
Legal Description:							
Lat: N 0 deg. OR N 0 deg. 0 min. 0 secs.				Long: E 0 deg. OR E 0 deg. 0 min. 0 secs.			
Contractor: OXY			Rig/Platform Name/Num: OXY				
Job Purpose: Cement Surface Casing						Ticket Amount:	
Well Type: Development Well			Job Type: Cement Surface Casing				
Sales Person: DUNNING, DUSTIN			Srv Supervisor: NELSON, RYAN			MBU ID Emp #: 386514	

Activity Description	Date/Time	Cht #	Rate bbl/ min	Volume bbl		Pressure psig		Comments
				Stage	Total	Tubing	Casing	
Call Out	01/19/2010 00:00							
Arrive At Loc	01/19/2010 08:30							Rig running casing.
Assessment Of Location Safety Meeting	01/19/2010 08:35							
Pre-Rig Up Safety Meeting	01/19/2010 09:00							
Rig-Up Equipment	01/19/2010 09:15							
Pre-Job Safety Meeting	01/19/2010 10:30							
Start Job	01/19/2010 11:27							TD-2763' TP-2721' SJ- 42.58' Casing 9 5/8" 36# Hole 14.75" Mud 8.9
Other	01/19/2010 11:28			2			44.0	Fill lines
Test Lines	01/19/2010 11:30						3460. 0	Had to replace 2" valve on cement head to get positive pressure test
Pump Spacer 1	01/19/2010 11:48		4	20			120.0	Fresh Water
Pump Spacer 2	01/19/2010 11:55		6	20			260.0	Super Flush
Pump Spacer 1	01/19/2010 12:00		6	20			260.0	Fresh Water
Pump Lead Cement	01/19/2010 12:03		6	539.5			360.0	1300 Sks 12.3ppg 2.33 yield 12.62 gal/sk
Pump Tail Cement	01/19/2010 13:36		6	46.1			350.0	125 Sks 12.8ppg 2.07 yield 10.67 gal/sk
Shutdown	01/19/2010 13:43							
Drop Top Plug	01/19/2010 13:44							
Pump Displacement	01/19/2010 13:45		6	207			575.0	Fresh Water

Sold To #: 344034

Ship To #: 2763821

Quote #:

Sales Order #:

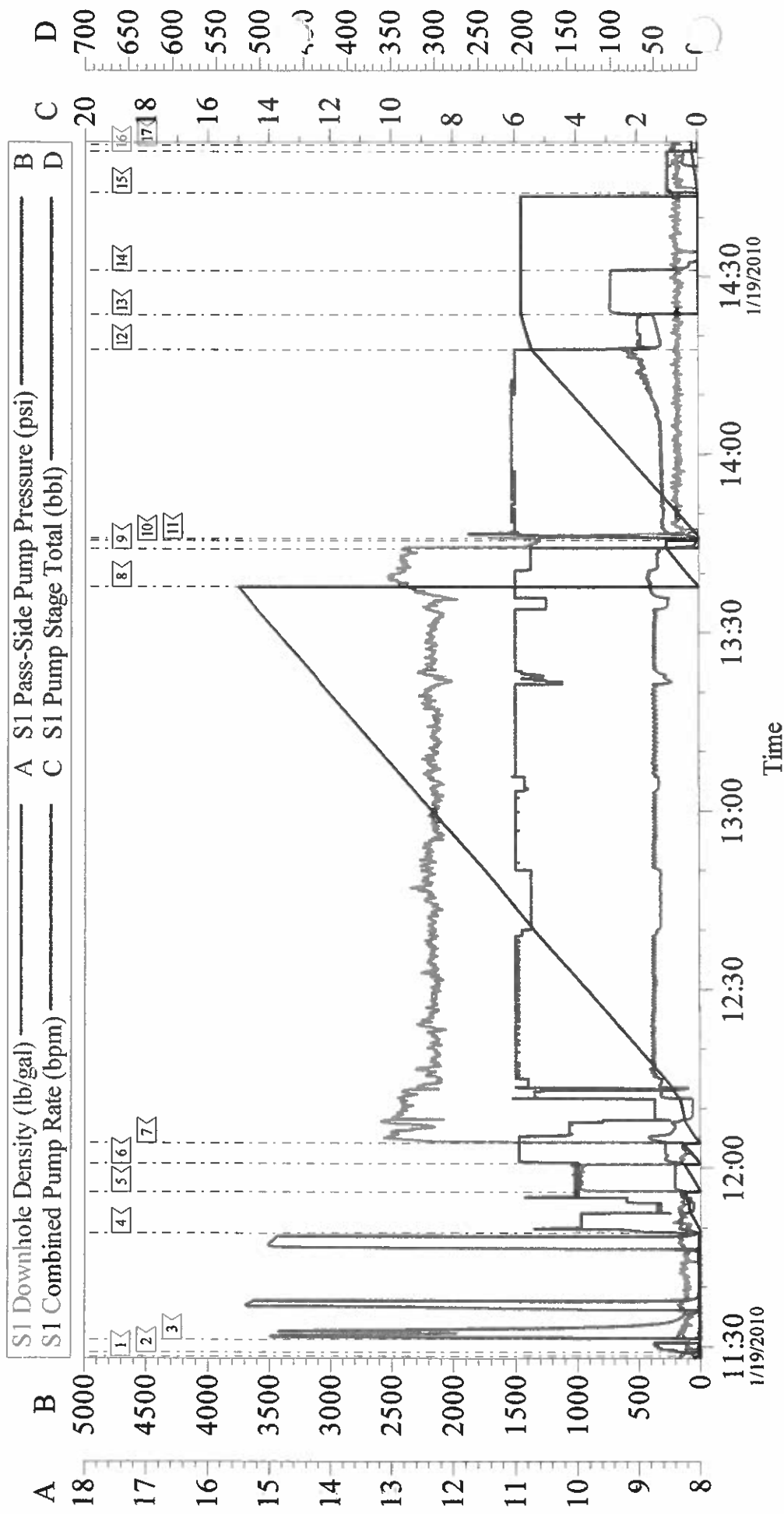
7126309

SUMMIT Version: 7.20.130

Wednesday, January 20, 2010 01:38:00

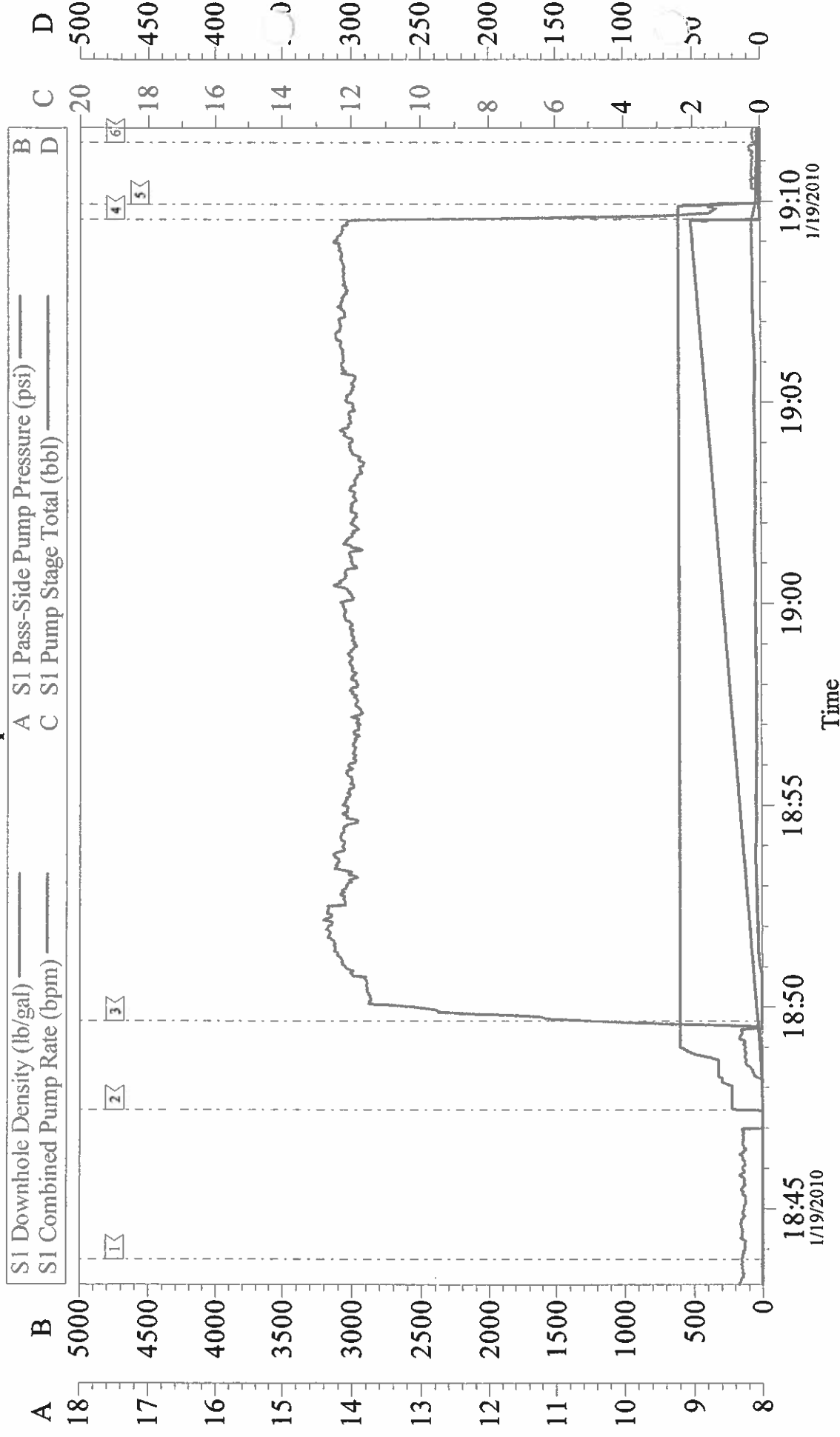
Activity Description	Date/Time	Cht #	Rate bbl/min	Volume bbl		Pressure psig		Comments
				Stage	Total	Tubing	Casing	
Slow Rate	01/19/2010 14:16		2	190			350.0	
Bump Plug	01/19/2010 14:23		2	207			700.0	
Check Floats	01/19/2010 14:29							Floats holding
Other	01/19/2010 14:43		1	9			85.0	Pump Down Parasite with sugar water
End Job	01/19/2010 14:51							No circulation during job.
Start Job	01/19/2010 18:43							60' 1" iron in annulus
Pump Spacer 1	01/19/2010 18:46		2.5	2			.0	Fresh Water
Pump Cement	01/19/2010 18:48		2.5	51			58.0	14.0 ppg
Pump Displacement	01/19/2010 19:08		2.5	1.5			48.0	Fresh Water
End Job	01/19/2010 19:10							
Start Job	01/19/2010 21:26							60' 1" iron in annulus
Pump Spacer 1	01/19/2010 21:26		2.5	2			30.0	Fresh Water
Pump Cement	01/19/2010 21:27		2.5	51			56.0	14.0 ppg
Pump Displacement	01/19/2010 21:48		2.5	1.5			50.0	Fresh Water
End Job	01/19/2010 21:50							
Start Job	01/20/2010 00:17							60' 1" iron in annulus
Pump Spacer 1	01/20/2010 00:23		2.5	2			18.0	Fresh Water
Pump Cement	01/20/2010 00:24		2.5	50			57.0	14.0 ppg
Cement Returns to Surface	01/20/2010 00:45							Shut down to see if cement would fall, cement staying in place.
Pump Displacement	01/20/2010 00:47		2.5	1			20.0	Fresh Water
End Job	01/20/2010 00:50							Thank you for using Halliburton-Ryan Nelson & Crew

Oxy 9 5/8" Surface



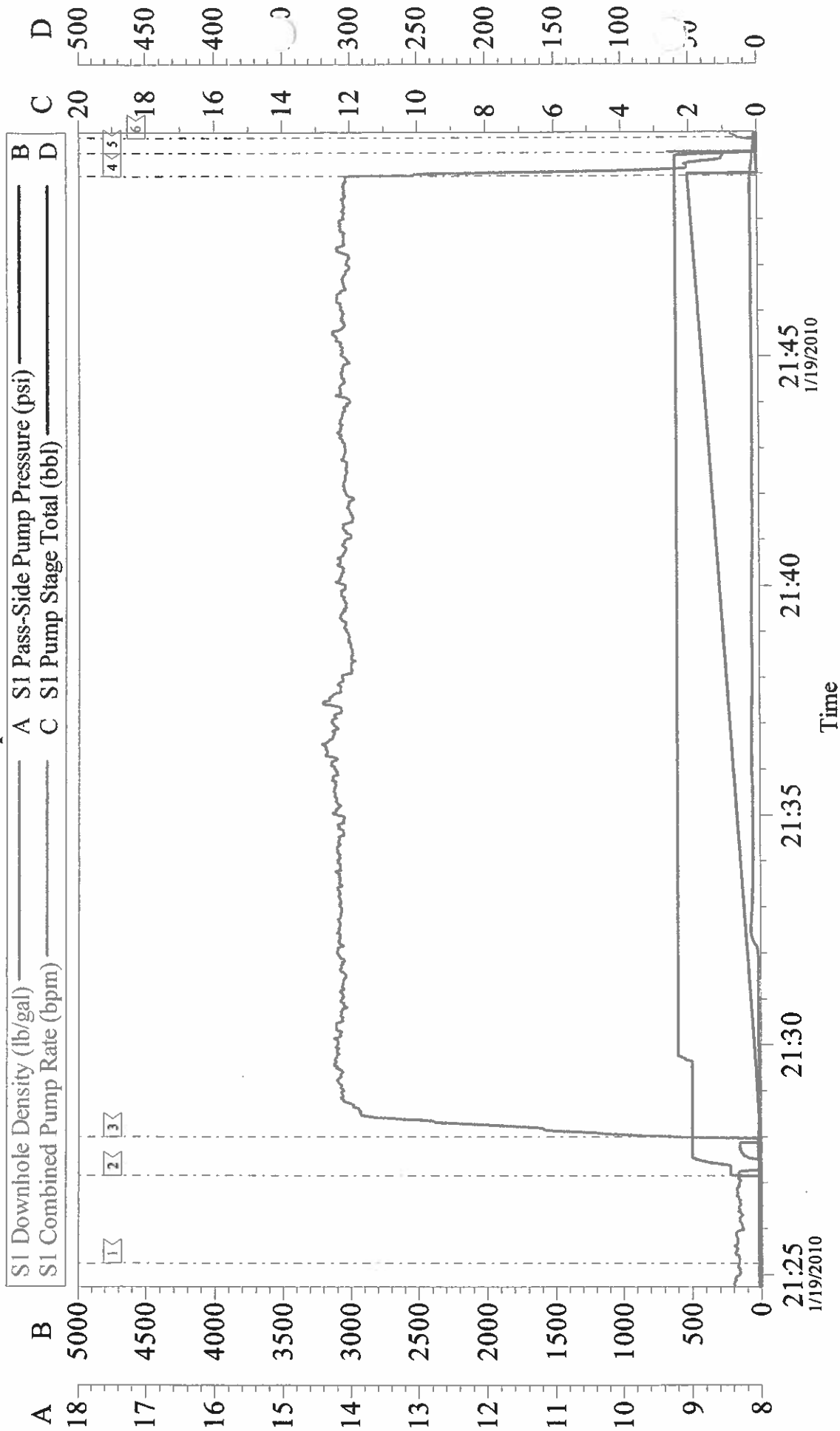
Customer: Oxy	Job Date: 19-Jan-2010	Sales Order #: 7126309
Well Description: CC 697-16-56B	Job Type: Surface	ADC Used: Yes
Company Rep: Simon Benvides	Cement Supervisor: Ryan Nelson	Elite #/Operator: #1 - Jon Gregory

Oxy Top Out #1



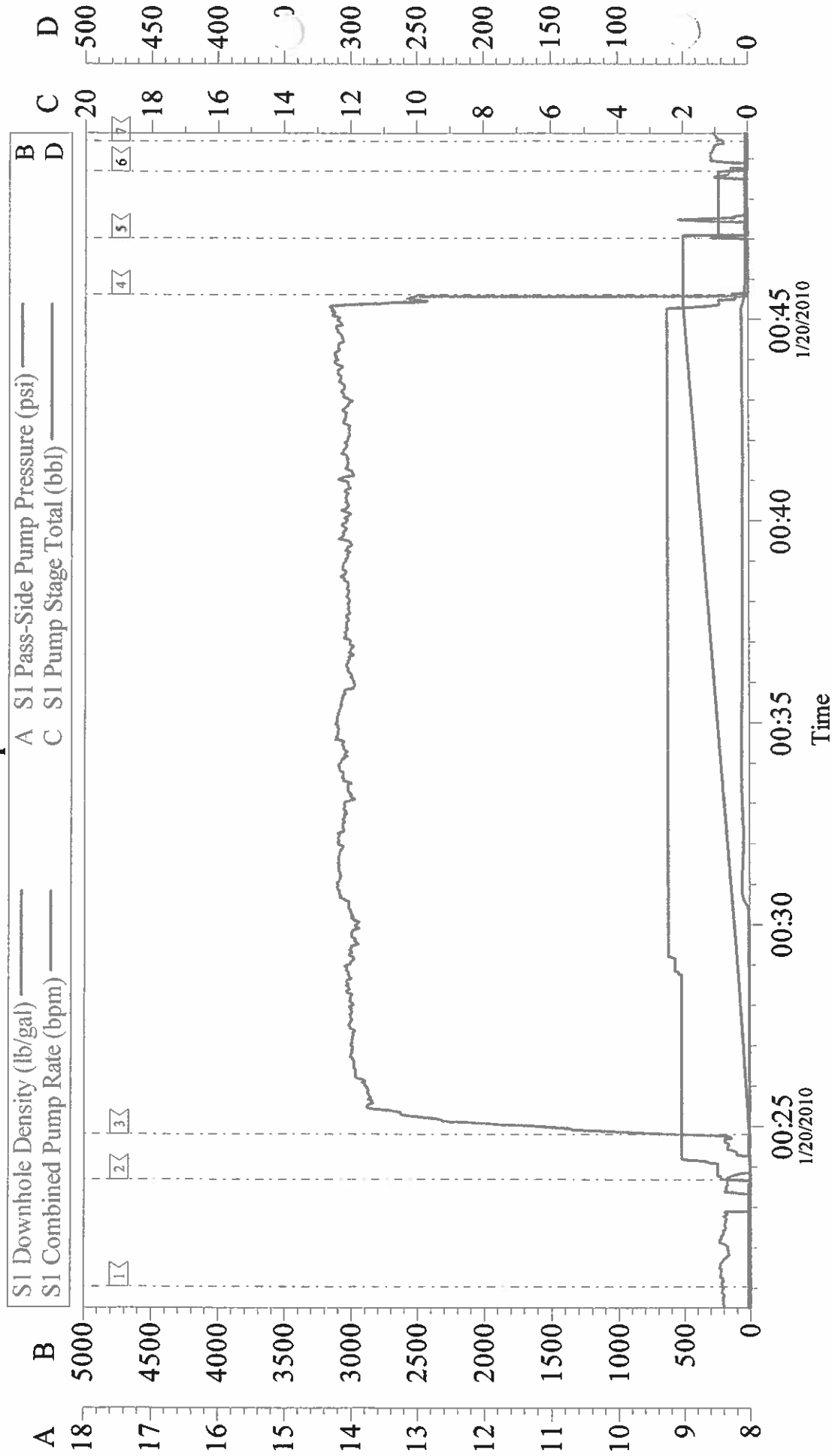
Customer: Oxy	Job Date: 19-Jan-2010	Sales Order #: 7126309
Well Description: CC 697-16-56B	Job Type: Top Out #1	ADC Used: Yes
Company Rep: Simon Benavides	Cement Supervisor: Ryan Nelson	Elite #/Operator: #1 - Eric Stillson

Oxy Top Out #2



Customer: Oxy	Job Date: 19-Jan-2010	Sales Order #: 7126309
Well Description: CC 697-16-56B	Job Type: Top Out #2	ADC Used: Yes
Company Rep: Simon Benavides	Cement Supervisor: Ryan Nelson	Elite #/Operator: #1 - Jon Gregory

Oxy Top Out #3



Customer: Oxy	Job Date: 20-Jan-2010	Sales Order #: 7126309
Well Description: CC 697-16-56B	Job Type: Top Out #3	ADC Used: Yes
Company Rep: Simon Benavides	Cement Supervisor: Ryan Nelson	Elite #/Operator: #1 - Jon Gregory