

**OXY GRAND JUNCTION EBUSINESS  
DO NOT MAIL  
BROWNFIELD, Texas**

CC 697-17-64B

OXY/H&P/330

**Post Job Summary  
Cement Surface Casing**

Prepared for: FREDDIE CATES  
Date Prepared: 1/29/10  
Version: 1

Service Supervisor: JAMISON, PRICE

Submitted by:

**HALLIBURTON**

*The Road to Excellence Starts with Safety*

Sold To #: 344034	Ship To #: 2765603	Quote #:	Sales Order #: 7147644
Customer: OXY GRAND JUNCTION EBUSINESS		Customer Rep: CATES, FREDDIE	
Well Name: CC	Well #: 697-17-64B	API/UWI #: 05-045-17051	
Field: GRAND VALLEY	City (SAP): PARACHUTE	County/Parish: Garfield	State: Colorado
Lat: N 39.522 deg. OR N 39 deg. 31 min. 18.322 secs.		Long: W 108.232 deg. OR W -109 deg. 46 min. 6.589 secs.	
Contractor: OXY	Rig/Platform Name/Num: H&P 330		
Job Purpose: Cement Surface Casing			
Well Type: Development Well		Job Type: Cement Surface Casing	
Sales Person: DUNNING, DUSTIN		Srvc Supervisor: JAMISON, PRICE	MBU ID Emp #: 229155

**Job Personnel**

HES Emp Name	Exp Hrs	Emp #	HES Emp Name	Exp Hrs	Emp #	HES Emp Name	Exp Hrs	Emp #
ANDERSON, ADAM S	21	456683	JAMISON, PRICE W	21	229155	JENSEN, SHANE Lynn	21	441759
NYE, KEVEN	21	460558	OLDS, RYAN John	21	418018	STILLSON, ERIC	21	393789

**Equipment**

HES Unit #	Distance-1 way	HES Unit #	Distance-1 way	HES Unit #	Distance-1 way	HES Unit #	Distance-1 way
10616651C	120 mile	10722398	120 mile	10724643	120 mile	10822535	120 mile
10856450	120 mile	10938673	120 mile	10995025	120 mile	11139330	120 mile
11259881	120 mile						

**Job Hours**

Date	On Location Hours	Operating Hours	Date	On Location Hours	Operating Hours	Date	On Location Hours	Operating Hours
1/29/10	21	6.5						

**TOTAL** Total is the sum of each column separately

**Job**

**Job Times**

Formation Name	Date	Time	Time Zone
Formation Depth (MD) Top	28 - Jan - 2010	15:40	MST
Bottom	29 - Jan - 2010	01:30	MST
Form Type	29 - Jan - 2010	06:28	MST
Job depth MD	29 - Jan - 2010	19:49	MST
Water Depth	29 - Jan - 2010	22:00	MST
Perforation Depth (MD) From			
To			
Deparated Loc			

**Well Data**

Description	New / Used	Max pressure psig	Size in	ID in	Weight lbm/ft	Thread	Grade	Top MD ft	Bottom MD ft	Top TVD ft	Bottom TVD ft
OPEN HOLE				14.75					2763.		2763.
SURFACE CASING	Unknown		9.625	8.921	36.		J-55		2720.		2720.

**Sales/Rental/3<sup>rd</sup> Party (HES)**

Description	Qty	Qty uom	Depth	Supplier
PLUG,CMTG, TOP, 9 5/8, HWE, 8.16 MIN/9.06 MA	1	EA		
PORT. DAS W/CEMWIN; ACQUIRE W/HES, ZI	1	JOB		
ADC (AUTO DENSITY CTRL) SYS, /JOB, ZI	1	JOB		

**Tools and Accessories**

Type	Size	Qty	Make	Depth	Type	Size	Qty	Make	Depth	Type	Size	Qty	Make
Guide Shoe					Packer					Top Plug			
Float Shoe					Bridge Plug					Bottom Plug			
Float Collar					Retainer					SSR plug set			
Insert Float										Plug Container			
Stage Tool										Centralizers			

**Miscellaneous Materials**

Gelling Agt	Conc	Surfactant	Conc	Acid Type	Qty	Conc	%
Treatment Fid	Conc	Inhibitor	Conc	Sand Type	Size	Qty	

Fluid Data									
Stage/Plug #: 1									
Fluid #	Stage Type	Fluid Name	Qty	Qty uom	Mixing Density lbm/gal	Yield ft <sup>3</sup> /sk	Mix Fluid Gal/sk	Rate bbl/min	Total Mix Fluid Gal/sk
1	WATER SPACER		20	bbl	8.33	.0	.0	5.0	
2	SUPER FLUSH 101	SUPER FLUSH 101 - SBM (12199)	20	bbl	10.	.0	.0	5.0	
3	WATER SPACER		20	bbl	8.33	.0	.0	5.0	
4	Lead Cement	VERSACEM (TM) SYSTEM (452010)	1300.0	sacks	12.3	2.33	12.62	6.0	12.62
5	Tail Cement	VERSACEM (TM) SYSTEM (452010)		sacks	12.8	2.07	10.67	6.0	10.67
6	DISPLACEMENT		207	bbl	8.33	.0	.0	8.0	
7	Topout Cement	HALCEM (TM) SYSTEM (452986)	300	sacks	14.	1.78	7.67	3.0	7.67
7.67 Gal		FRESH WATER							
Calculated Values		Pressures		Volumes					
Displacement	207	Shut In: Instant		Lost Returns	YES	Cement Slurry	680.6	Pad	
Top Of Cement	SURFACE	5 Min		Cement Returns	NO	Actual Displacement	202	Treatment	
Frac Gradient		15 Min		Spacers	60	Load and Breakdown		Total Job	950
Rates									
Circulating	RIG	Mixing	6	Displacement	8	Avg. Job	7		
Cement Left In Pipe	Amount	42 ft	Reason	Shoe Joint					
Frac Ring # 1 @	ID	Frac ring # 2 @	ID	Frac Ring # 3 @	ID	Frac Ring # 4 @	ID		
The Information Stated Herein Is Correct				Customer Representative Signature					

*The Road to Excellence Starts with Safety*

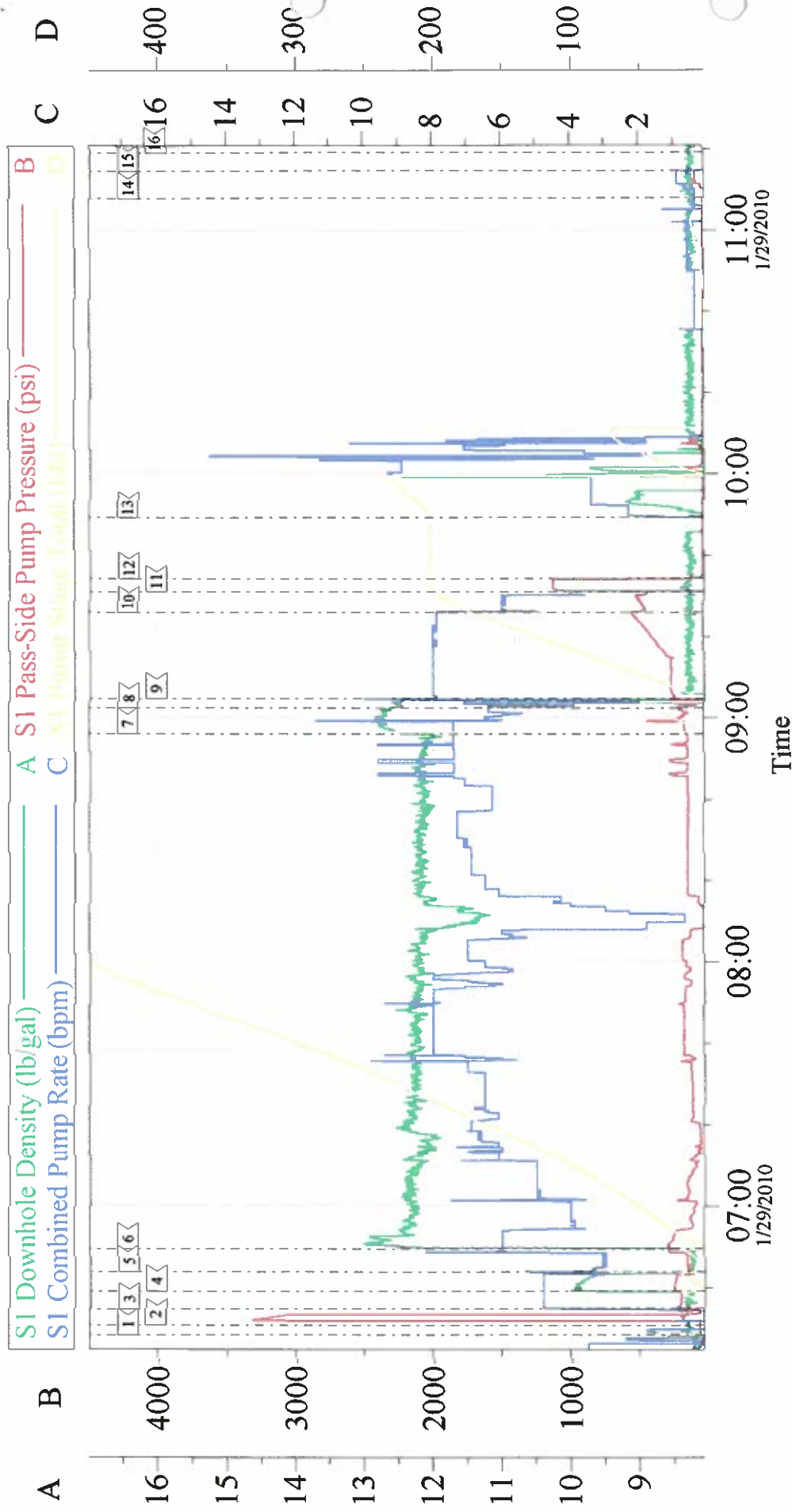
Sold To #: 344034	Ship To #: 2765603	Quote #:	Sales Order #: 7147644
Customer: OXY GRAND JUNCTION EBUSINESS		Customer Rep: CATES, FREDDIE	
Well Name: CC	Well #: 697-17-64B	API/UWI #: 05-045-17051	
Field: GRAND VALLEY	City (SAP): PARACHUTE	County/Parish: Garfield	State: Colorado
<b>Legal Description:</b>			
Lat: N 39.522 deg. OR N 39 deg. 31 min. 18.322 secs.		Long: W 108.232 deg. OR W -109 deg. 46 min. 6.589 secs.	
Contractor: OXY		Rig/Platform Name/Num: H&P 330	
Job Purpose: Cement Surface Casing			Ticket Amount:
Well Type: Development Well		Job Type: Cement Surface Casing	
Sales Person: DUNNING, DUSTIN		Srvc Supervisor: JAMISON, PRICE	MBU ID Emp #: 229155

Activity Description	Date/Time	Cht #	Rate bbl/min	Volume bbl		Pressure psig		Comments
				Stage	Total	Tubing	Casing	
Assessment Of Location Safety Meeting	01/28/2010 01:40							
Call Out	01/28/2010 15:40							TD 2763 TP 2720 SHOE JOINT 42 MUD 9.6 PPG CASING 9 5/8 36 # GRADE J-55 HOLE 14 3/4
Depart Yard Safety Meeting	01/28/2010 19:20							
Crew Leave Yard	01/28/2010 19:30							
Arrive At Loc	01/29/2010 01:30							
Pre-Rig Up Safety Meeting	01/29/2010 02:30							
Pre-Job Safety Meeting	01/29/2010 05:50							
Start Job	01/29/2010 06:28							
Test Lines	01/29/2010 06:31						3000.0	
Pump Spacer 1	01/29/2010 06:34		5	20			248.0	FRESH WATER
Pump Spacer 2	01/29/2010 06:39		5	20			299.0	SUPER FLUSH
Pump Spacer 1	01/29/2010 06:44		8	20			295.0	FRESH WATER
Pump Lead Cement	01/29/2010 06:49		6	539.5			295.0	MIXED @ 12.3 PPG YIELD 2.33 WAT/REQ 12.62 1300 SKS
Pump Tail Cement	01/29/2010 08:56		6	46			175.0	MIXED @ 12.8 PPG YIELD 2.07 WAT/REQ 10.67
Shutdown	01/29/2010 09:02							

Activity Description	Date/Time	Cht #	Rate bbl/min	Volume bbl		Pressure psig		Comments
				Stage	Total	Tubing	Casing	
Drop Plug	01/29/2010 09:04							
Pump Displacement	01/29/2010 09:04		8					FRESH WATER
Slow Rate	01/29/2010 09:26		4	197			466.0	
Bump Plug	01/29/2010 09:31		4	202			445.0	PRESSURED UP TO 1121 PSI
Check Floats	01/29/2010 09:34							FLOATS HELD
Clean Lines	01/29/2010 09:49							
Pump Water	01/29/2010 11:08		0.5	10			98.0	PUMP DOWN PARASIGHT STRING WITH SUGAR WATER
Shutdown	01/29/2010 11:14							GOOD CIRCULATION TILL 108 GONE ON CEMENT NEVER DID REGAIN CIRCULATION
End Job	01/29/2010 11:19							NO CEMENT BACK TO SURFACE. CASING WAS NOT MOVED THROUGHOUT JOB
Wait on Customer or Customer Sub-Contractor Equip	01/29/2010 11:46							SKIDDING RIG
Wait on Customer or Customer Sub-Contractor Equipm	01/29/2010 11:46							
Pre-Job Safety Meeting	01/29/2010 14:40							TOP OUT
Start Job	01/29/2010 15:14							
Pump Cement	01/29/2010 15:16		3.5	35.4			140.0	MIXED @ 14.0 PPG YIELD 1.78 WAT/REQ 112 SKS
Pump Displacement	01/29/2010 15:28		2	2			40.0	
Shutdown	01/29/2010 15:29							
End Job	01/29/2010 15:29							
Pump Water	01/29/2010 16:09		2	2			2.0	
Start Job	01/29/2010 17:36							TOP OUT # 2

Activity Description	Date/Time	Cht #	Rate bbl/min	Volume bbl		Pressure psig		Comments
				Stage	Total	Tubing	Casing	
Pump Water	01/29/2010 17:37		2	2		2.0		
Shutdown	01/29/2010 17:56							
End Job	01/29/2010 17:57							
Pump Cement	01/29/2010 18:16		3.5	37.5		140.0		MIXED @ 14.0 PPG YIELD 1.78 WAT/REQ 7.67 120 SKS
Start Job	01/29/2010 18:08							TOP OUT # 3
Pump Water	01/29/2010 19:09		2	2		2.0		
Pump Cement	01/29/2010 19:10		3	32		80.0		MIXED @ 14.0 PPG YIELD 1.78 WAT/REQ 7.67 100 SKS
Shutdown	01/29/2010 19:48							
Start Job	01/29/2010 19:49							
Post-Job Safety Meeting (Pre Rig-Down)	01/29/2010 20:00							
Depart Location Safety Meeting	01/29/2010 21:50							
Crew Leave Location	01/29/2010 22:00							THANKS FOR USING HALLIBURTON BILL JAMISON & CREW

# OXY 9 5/8 SURFACE CASING

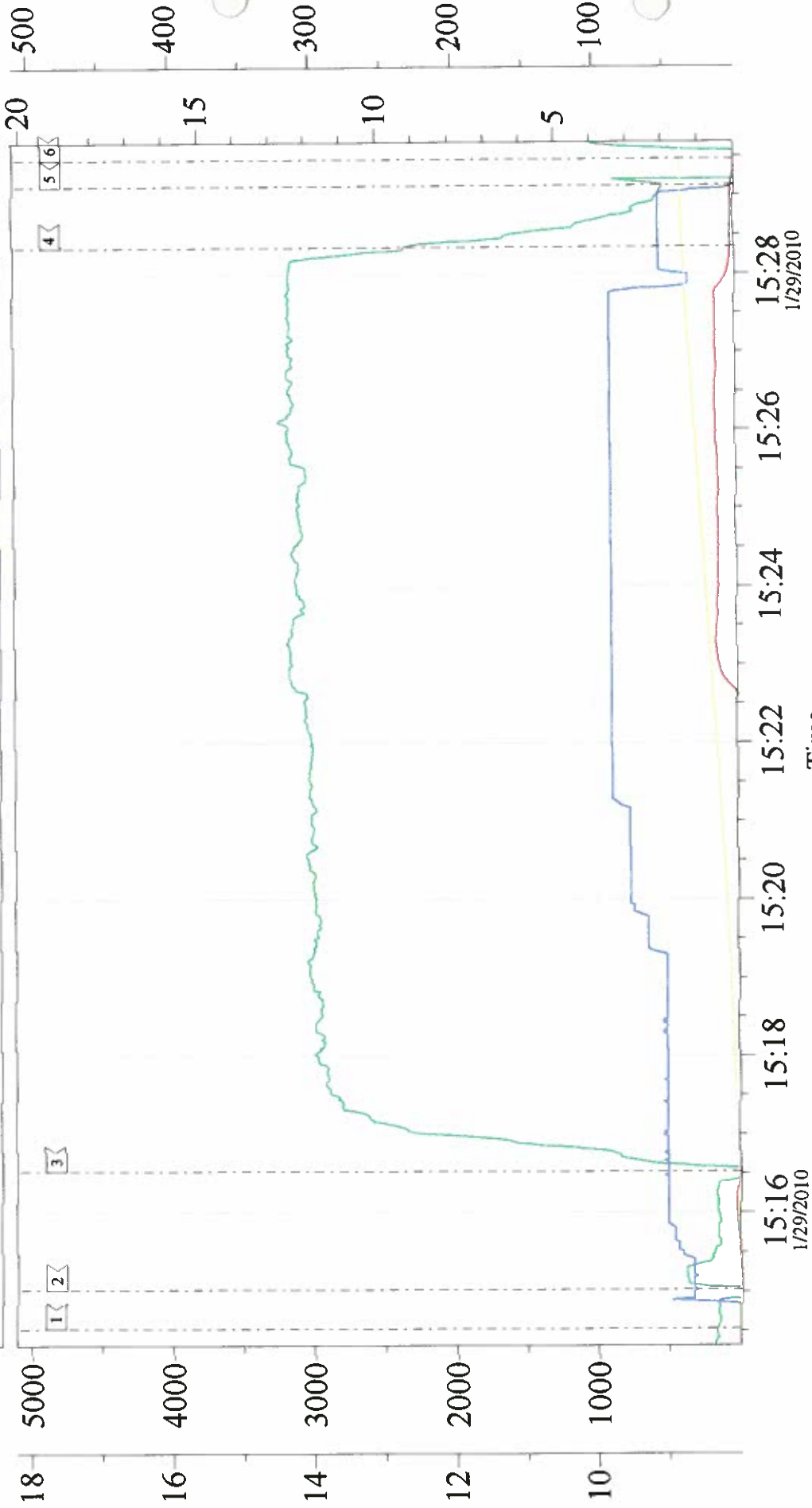


Local Event Log								
1	START JOB	06:28:39	2	TEST LINES	06:31:01	3	START FRESH WATER SPACER	06:34:57
4	START SUPER FLUSH	06:39:18	5	START FRESH WATER SPACER	06:44:03	6	START LEAD CEMENT	06:49:33
7	START TAIL CEMENT	08:56:03	8	SHUT DOWN	09:02:22	9	DROP PLUG PUMP DISPLACEMENT	09:04:44
10	SLOW RATE	09:26:00	11	BUMP PLUG	09:31:07	12	CHECK FLOATS	09:34:17
13	CLEAN LINES	09:49:14	14	PUMP DOWN PARASIGHT STRING	11:08:04	15	SHUT DOWN	11:14:47
16	END JOB	11:19:07						

Customer:	OXY	Job Date:	29-Jan-2010	Sales Order #:	7147644
Well Description:	CC 697-17-64B	Job Type:	CEMENT	ADC Used:	YES
Company Rep:	FREDDIE CATES	Cement Supervisor:	BILL JAMISON	Elite #:	4 SHANE JENSEN

# OXY TOP OUT

S1 Downhole Density (lb/gal) A S1 Pass-Side Pump Pressure (psi) B  
S1 Combined Pump Rate (bpm) C S1 Pump Stroke Total (ft/ft) D

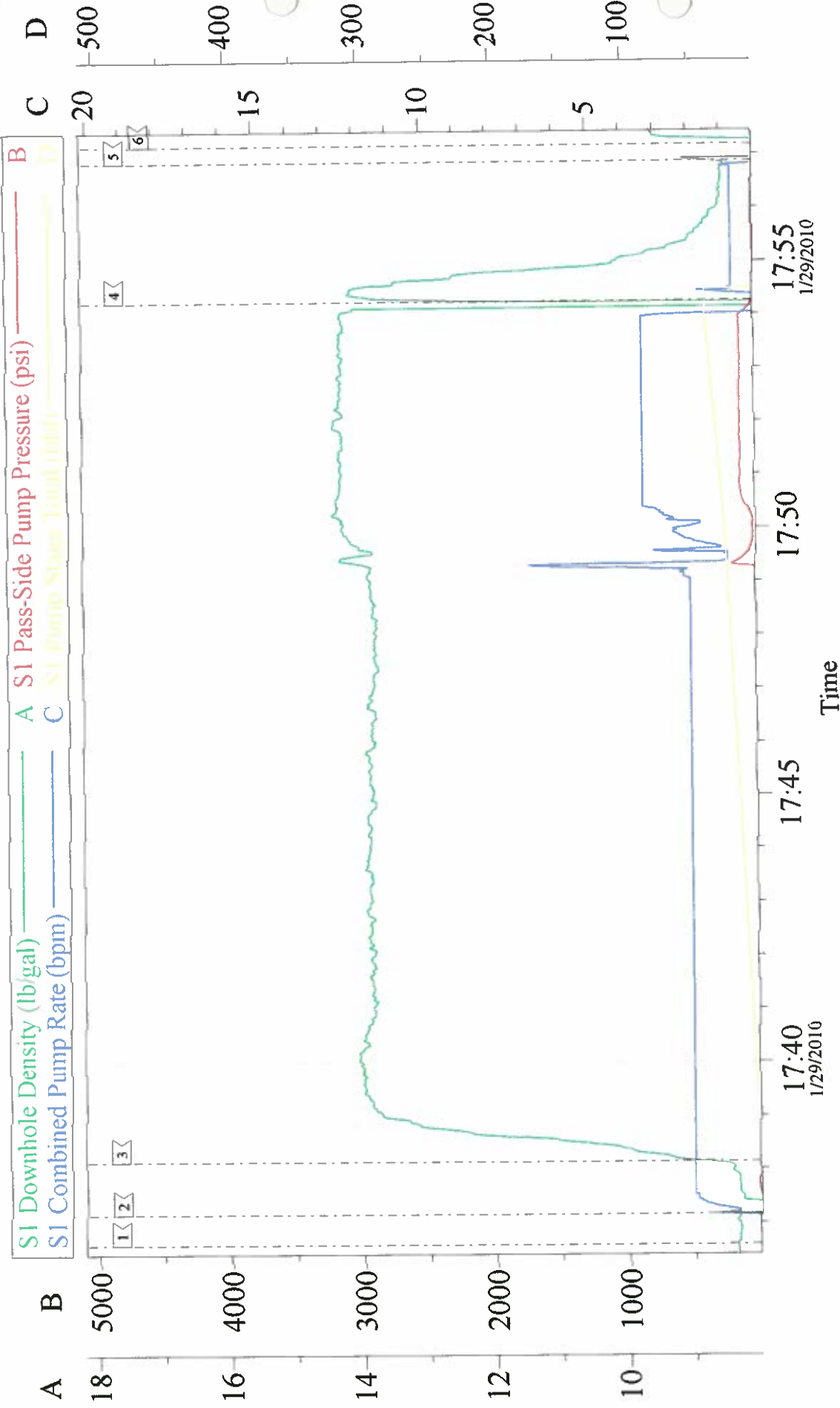


Local Event Log

1	START JOB	15:14:32	2	START FRESH WATER SPACER	15:15:01	3	START CEMENT	15:16:31
4	START DISPLACEMENT	15:28:21	5	SHUT DOWN	15:29:08	6	END JOB	15:29:28

Customer: OXY	Job Date: 29-Jan-2010	Sales Order #: 7147644
Well Description: CC 697-17-34B	Job Type: CEMENT	ADC Used: YES
Company Rep: FREDDIE CATES	Cement Supervisor: BILL JAMISON	Elite #4: RYAN OLDS

# OXY TOP OUT # 2

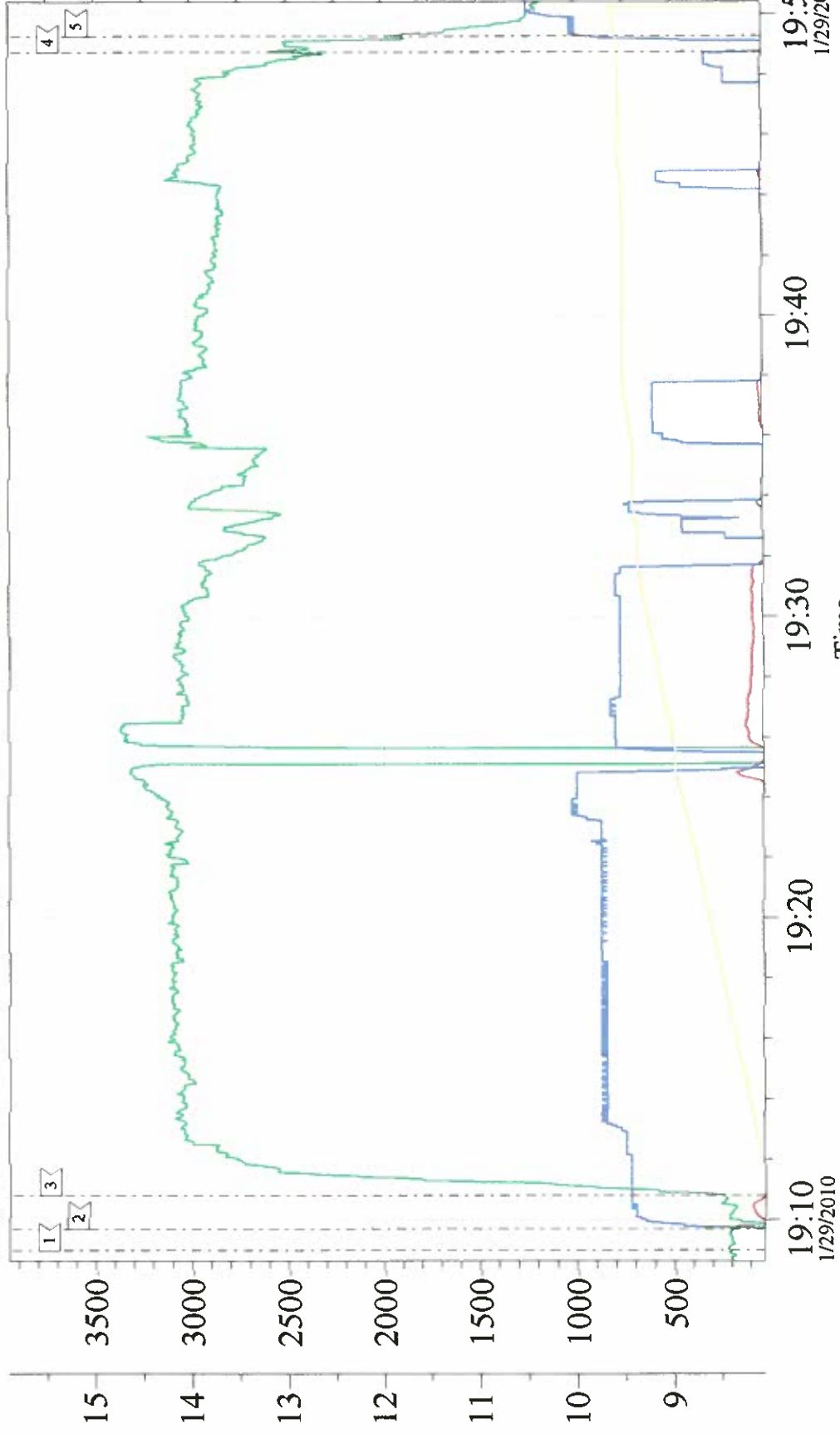


Local Event Log								
1	START JOB	17:36:36	2	START WATER	17:37:10	3	START CEMENT	17:38:09
4	START DISPLACEMENT	17:54:15	5	SHUT DOWN	17:56:52	6	END JOB	17:57:11

Customer:	OXY	Job Date:	29-Jan-2010	Sales Order #:	7147644
Well Description:	CC 697-17-34B	Job Type:	CEMENT	ADC Used:	YES
Company Rep:	FREDDIE CATES	Cement Supervisor:	BILL JAMISON	Elite #:	4
					RYAN OLDS

# OXY TOP OUT # 3

A S1 Downhole Density (lb/gal)    A S1 Pass-Side Pump Pressure (psi)    B  
C S1 Combined Pump Rate (bpm)    C S1 Pump Stroke Total (bbl)    D



Local Event Log	
1	START JOB 19:09:00
2	START WATER 19:09:42
3	START CEMENT 19:10:49
4	SHUT DOWN 19:48:46
5	END JOB 19:49:17

Customer:	OXY	Job Date:	29-Jan-2010	Sales Order #:	7147644
Well Description:	CC 697-17-64B	Job Type:	CEMENT	ADC Used:	YES
Company Rep:	FREDDIE CATES	Cement Supervisor:	BILL JAMISON	Elite #:	4
					RYAN OLDS