

**OXY GRAND JUNCTION EBUSINESS
DO NOT MAIL
BROWNFIELD, Texas**

CASCADE CREEK
CASCADE CREEK 697-16-25B

/H&P/330

**Post Job Summary
Cement Surface Casing**

Prepared for: SIMON BENEVIDES
Date Prepared: 01/22/10
Version: 1

Service Supervisor: GALLEGOS, JASON

Submitted by:

HALLIBURTON

The Road to Excellence Starts with Safety

Sold To #: 344034	Ship To #: 2764620	Quote #:	Sales Order #: 7133141
Customer: OXY GRAND JUNCTION EBUSINESS		Customer Rep: Benevides, Simon	
Well Name: CASCADE CREEK		Well #: 697-16-25B	API/UWI #: 05-045-17604
Field: GRAND VALLEY	City (SAP): PARACHUTE	County/Parish: Garfield	State: Colorado
Lat: N 39.522 deg. OR N 39 deg. 31 min. 18.44 secs.		Long: W 108.231 deg. OR W -109 deg. 46 min. 6.622 secs.	
Contractor:		Rig/Platform Name/Num: H&P330	
Job Purpose: Cement Surface Casing			
Well Type: Development Well		Job Type: Cement Surface Casing	
Sales Person: DUNNING, DUSTIN		Srvc Supervisor: GALLEGOS, JASON	MBU ID Emp #: 386647

Job Personnel

HES Emp Name	Exp Hrs	Emp #	HES Emp Name	Exp Hrs	Emp #	HES Emp Name	Exp Hrs	Emp #
CALDWELL, JEFFREY S	11	369111	CREECH, STEVEN Michael	11	420183	FEUERBORN, JOHN William	11	381677
GALLEGOS, JASON Michael	11	386647	MUHLESTEIN, RYAN Herrick	11	453609	SMITH, CHRISTOPHER Scott	11	452619
WHITE, EDWARD W	11	424173						

Equipment

HES Unit #	Distance-1 way	HES Unit #	Distance-1 way	HES Unit #	Distance-1 way	HES Unit #	Distance-1 way
10951249	120 MILES	11057896	120 MILES	10804567	120 MILES	10296148	120 MILES
10998512	120 MILES	10867322	120 MILES	10989685	120 MILES	10867531	120 MILES
11071559	120 MILES	10297346	120 MILES	10822535	120 MILES		

Job Hours

Date	On Location Hours	Operating Hours	Date	On Location Hours	Operating Hours	Date	On Location Hours	Operating Hours
01/22/10	11	6						
TOTAL			Total is the sum of each column separately					

Job

Job Times

Formation Name	Top	Bottom	Called Out	Date	Time	Time Zone
Formation Depth (MD)			On Location	21 - Jan - 2010	23:30	MST
Form Type		BHST	Job Started	22 - Jan - 2010	09:00	MST
Job depth MD	2764. ft	Job Depth TVD	Job Completed	22 - Jan - 2010	11:35	MST
Water Depth		Wk Ht Above Floor	Departed Loc	22 - Jan - 2010	15:57	MST
Perforation Depth (MD)	From	To		22 - Jan - 2010	21:00	MST

Well Data

Description	New / Used	Max pressure psig	Size in	ID in	Weight lbm/ft	Thread	Grade	Top MD ft	Bottom MD ft	Top TVD ft	Bottom TVD ft
Sales/Rental/3 rd Party (HES)											

Description

Description	Qty	Qty uom	Depth	Supplier
PLUG,CMTG, TOP, 9 5/8, HWE, 8.16 MIN/9.06 MA	1	EA		
PORT. DAS W/CEMWIN; ACQUIRE W/HES, ZI	1	JOB		
ADC (AUTO DENSITY CTRL) SYS, /JOB, ZI	1	JOB		

Tools and Accessories

Type	Size	Qty	Make	Depth	Type	Size	Qty	Make	Depth	Type	Size	Qty	Make
Guide Shoe					Packer					Top Plug	9.625	1	
Float Shoe					Bridge Plug					Bottom Plug			
Float Collar					Retainer					SSR plug set			
Insert Float										Plug Container	9.625	1	
Stage Tool										Centralizers			

Miscellaneous Materials

Gelling Agt	Conc	Surfactant	Conc	Acid Type	Qty	Conc	%
Treatment Fld	Conc	Inhibitor	Conc	Sand Type	Size	Qty	

Fluid Data									
Stage/Plug #: 1									
Fluid #	Stage Type	Fluid Name	Qty	Qty uom	Mixing Density lbm/gal	Yield ft ³ /sk	Mix Fluid Gal/sk	Rate bbl/min	Total Mix Fluid Gal/sk
1	WATER SPACER		20	bbl	8.33	.0	.0	6	
2	SUPER FLUSH 101	SUPER FLUSH 101 - SBM (12199)	20	bbl	10.	.0	.0	6	
3	WATER SPACER		20	bbl	.	.0	.0	6	
4	Lead Cement	VERSACEM (TM) SYSTEM (452010)	1300	sacks	12.3	2.33	12.62	6	12.62
5	Tail Cement	VERSACEM (TM) SYSTEM (452010)	125	sacks	12.8	2.07	10.67	6	10.67
6	DISPLACEMENT		208.3	bbl	.	.0	.0	6	
7	Topout Cement	HALCEM (TM) SYSTEM (452986)	95	sacks	14.	1.78	7.67	2	7.67
7.67 Gal		FRESH WATER							
Calculated Values		Pressures			Volumes				
Displacement	208.3	Shut In: Instant		Lost Returns	NONE	Cement Slurry	585.6	Pad	
Top Of Cement	SURFACE	5 Min		Cement Returns	5	Actual Displacement	208.3	Treatment	
Frac Gradient		15 Min		Spacers	60	Load and Breakdown		Total Job	854
Rates									
Circulating		Mixing	6	Displacement	6	Avg. Job	6		
Cement Left In Pipe	Amount	42.50 ft	Reason	Shoe Joint					
Frac Ring # 1 @	ID	Frac ring # 2 @	ID	Frac Ring # 3 @	ID	Frac Ring # 4 @	ID		
The Information Stated Herein Is Correct				Customer Representative Signature					

The Road to Excellence Starts with Safety

Sold To #: 344034	Ship To #: 2764620	Quote #:	Sales Order #: 7133141
Customer: OXY GRAND JUNCTION EBUSINESS		Customer Rep: Benevides, Simon	
Well Name: CASCADE CREEK	Well #: 697-16-25B	API/UWI #: 05-045-17604	
Field: GRAND VALLEY	City (SAP): PARACHUTE	County/Parish: Garfield	State: Colorado
Legal Description:			
Lat: N 39.522 deg. OR N 39 deg. 31 min. 18.44 secs.		Long: W 108.231 deg. OR W -109 deg. 46 min. 6.622 secs.	
Contractor:	Rig/Platform Name/Num: H&P 330		
Job Purpose: Cement Surface Casing			Ticket Amount:
Well Type: Development Well	Job Type: Cement Surface Casing		
Sales Person: DUNNING, DUSTIN	Srvc Supervisor: GALLEGOS, JASON	MBU ID Emp #: 386647	

Activity Description	Date/Time	Cht #	Rate bbl/min	Volume bbl		Pressure psig		Comments
				Stage	Total	Tubing	Casing	
Call Out	01/21/2010 23:15							
Depart Yard Safety Meeting	01/22/2010 02:00							ATTENDED BY ENTIRE HES CREW
Crew Leave Yard	01/22/2010 02:30							
Delayed Arrival due to Road/Weather Conditions	01/22/2010 09:00							HEAVY SNOW AND SNOW PACKED/ICED ROADS
Assessment Of Location Safety Meeting	01/22/2010 09:10							ATTENDED BY ENTIRE HES CREW
Other	01/22/2010 09:20							SPOT EQUIPMENT
Pre-Rig Up Safety Meeting	01/22/2010 09:50							ATTENDED BY ENTIRE HES CREW
Rig-Up Equipment	01/22/2010 10:00							
Pre-Job Safety Meeting	01/22/2010 11:00							ATTENDED BY ENTIRE HES CREW AND ENTIRE RIG CREW
Start Job	01/22/2010 11:35							TP 2737.03', TD 2764', SJ 42.50', MW 8.8#, CASING 9.625" 36# J55, HOLE 14 3/4"
Test Lines	01/22/2010 11:39		2	2			4000.0	PRESSURE HELD
Pump Spacer 1	01/22/2010 11:43		6	20			110.0	FRESH WATER
Pump Spacer 2	01/22/2010 11:48		6	20			142.0	SUPER FLUSH
Pump Spacer 1	01/22/2010 11:53		6	20			50.0	FRESH WATER
Pump Lead Cement	01/22/2010 12:01		6	539.5			231.0	1300 SACKS, MIXED @ 12.3 PPG, 2.33 YIELD, 12.62 GAL/SK

Sold To #: 344034

Ship To #: 2764620

Quote #:

Sales Order #:

7133141

SUMMIT Version: 7.20.130

Friday, January 22, 2010 06:59:00

Activity Description	Date/Time	Cht #	Rate bbl/min	Volume bbl		Pressure psig		Comments
				Stage	Total	Tubing	Casing	
Pump Tail Cement	01/22/2010 14:39		6	46.1			450.0	125 SACKS, MIXED @ 12.8 PPG, 2.07 YIELD, 10.67 GAL/SK
Shutdown	01/22/2010 14:46							
Drop Top Plug	01/22/2010 14:49							PLUG LAUNCHED
Pump Displacement	01/22/2010 14:51		6				665.0	FRESH WATER
Slow Rate	01/22/2010 15:20		2	198			750.0	
Bump Plug	01/22/2010 15:30						650.0	PRESSURED UP TO 1350 PSI
Check Floats	01/22/2010 15:35							FLOATS HELD
End Job	01/22/2010 15:57							PIPE WAS NOT MOVED DURING JOB. TRACE SIGNS OF RETURNS TOWARDS END OF JOB. NO CEMENT RETURNS.
Safety Huddle	01/22/2010 16:00							DISCUSSED PLAN FOR TOPOUT
Wait on Customer or Customer Sub-Contractor Equip	01/22/2010 16:10							
Wait on Customer or Customer Sub-Contractor Equipm	01/22/2010 16:30							
Start Job	01/22/2010 17:22							TOPOUT #1,
Pump Spacer	01/22/2010 17:23		2	1			70.0	FRESH WATER
Pump Cement	01/22/2010 17:24		2	30			125.0	95 SACKS, MIXED @ 14.0 PPG, 1.78 YIELD, 7.67 GAL/SK
Pump Displacement	01/22/2010 17:40		2	1			130.0	FRESH WATER
Shutdown	01/22/2010 17:42							
End Job	01/22/2010 17:42							PUMPED THROUGH 60 FEET OF 1" PIPE, 5 BBLs OF CEMENT RETURNS TO SURFACE.
Post-Job Safety Meeting (Pre Rig-Down)	01/22/2010 17:45							ATTENDED BY ENTIRE HES CREW

Sold To # : 344034

Ship To # : 2764620

Quote # :

Sales Order # : 7133141

SUMMIT Version: 7.20.130

Friday, January 22, 2010 06:59:00

Cementing Job Log

Activity Description	Date/Time	Cht #	Rate bbl/ min	Volume bbt		Pressure psig		Comments
				Stage	Total	Tubing	Casing	
Rig-Down Equipment	01/22/2010 17:50							
Depart Location Safety Meeting	01/22/2010 19:50							ATTENDED BY ENTIRE HES CREW
Crew Leave Location	01/22/2010 20:00							THANK YOU FOR USING HALLIBURTON CEMENT, JASON GALLEGOS AND CREW

Sold To # : 344034

Ship To # :2764620

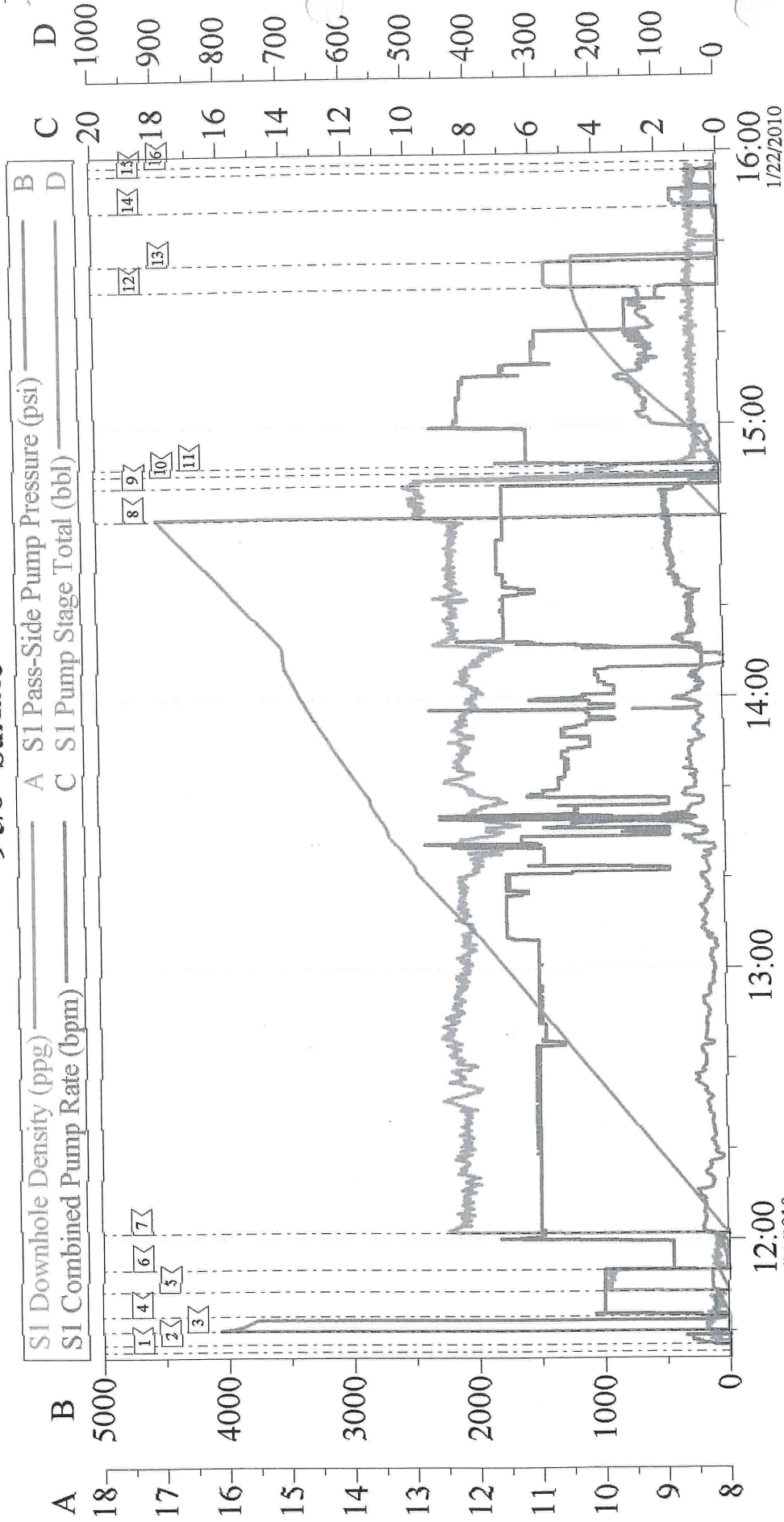
Quote # :

Sales Order # : 7133141

SUMMIT Version: 7.20.130

Friday, January 22, 2010 06:59:00

Oxy 9 5/8" Surface

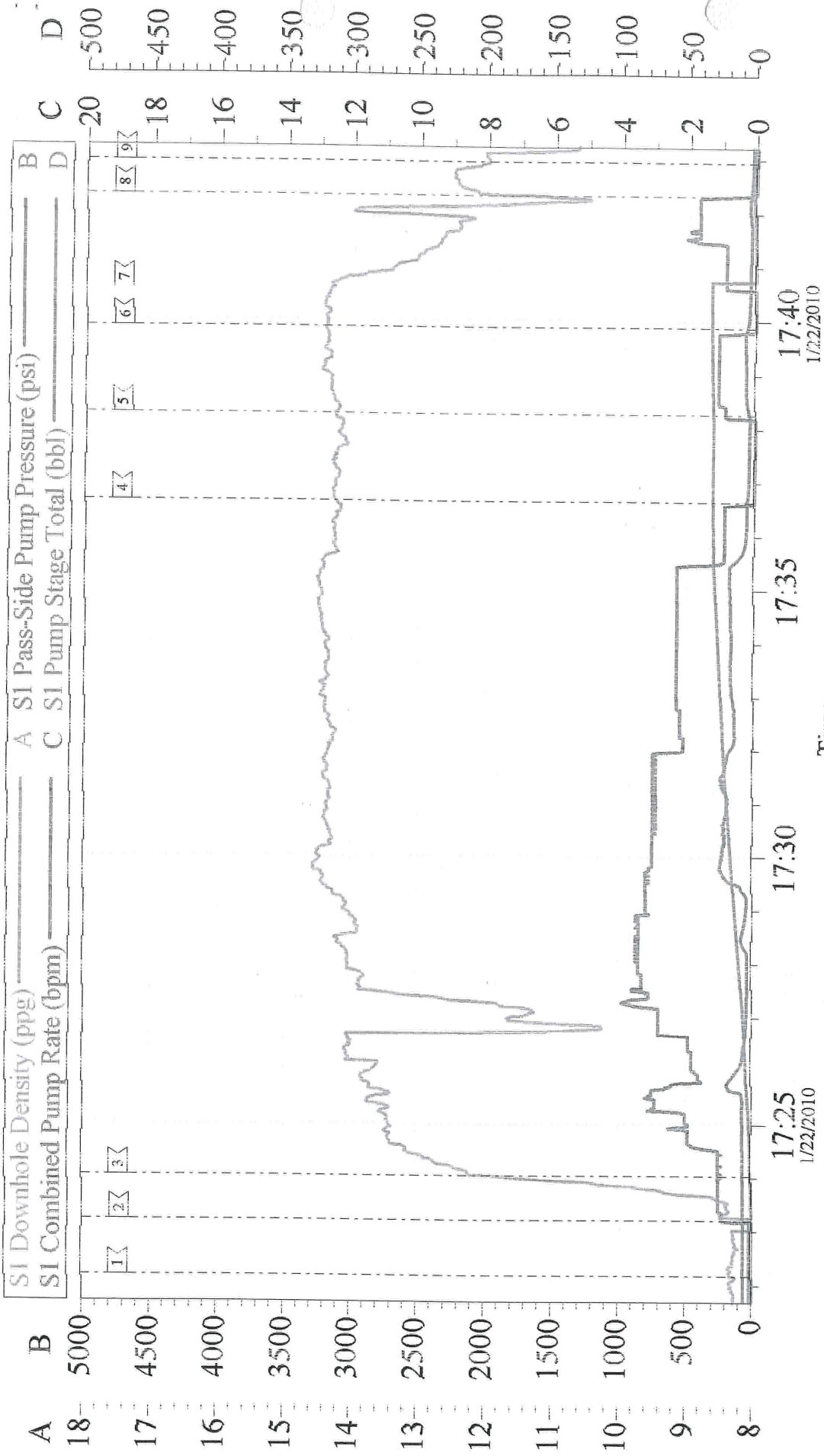


Local Event Log

1	START JOB	11:35:29	2	FILL LINES	11:36:59	3	PRESSURE TEST	11:39:58
4	PUMP H2O SPACER	11:43:10	5	PUMP SUPER FLUSH	11:48:42	6	PUMP H2O SPACER	11:53:19
7	PUMP LEAD CEMENT	12:01:22	8	PUMP TAIL CEMENT	14:39:31	9	SHUTDOWN	14:46:55
10	DROP TOP PLUG	14:49:30	11	PUMP DISPLACEMENT	14:51:02	12	LAND PLUG	15:30:08
13	CHECK FLOATS	15:35:45	14	PUMP DOWN PARASITE	15:47:30	15	SHUTDOWN	15:55:40
16	END JOB	15:57:26						

Customer:	Oxy	Job Date:	22-Jan-2010	Sales Order #:	7133141
Well Description:	CC 697-16-25B	Job Type:	Surface	ADC Used:	Yes
Company Rep:	Simon Benevides	Cement Supervisor:	Jason Gallegos	Elite #:	#9 - Chris Smith

Oxy Top Out #1



Customer: Oxy	Job Date: 22-Jan-2010	Sales Order #: 7133141
Well Description: CC 697-16-25B	Job Type: Top Out #1	ADC Used: Yes
Company Rep: Simon Benevides	Cement Supervisor: Jason Gallegos	Elite #: #9 - Ryan Mublestein