

The Road to Excellence Starts with Safety

Sold To #: 300466		Ship To #: 2763975		Quote #:		Sales Order #: 7128534	
Customer: ANADARKO PETROLEUM CORP - EBUS				Customer Rep: TUCKER, RUSTY			
Well Name: Alfred D Sater			Well #: Unit #1		API/UWI #: 05-123-08381-00		
Field: WATTENBERG		City (SAP): FIRESTONE		County/Parish: Weld		State: Colorado	
Contractor: Eastern Colorado Well Service			Rig/Platform Name/Num:				
Job Purpose: Squeeze Perfs							
Well Type: Producing Well			Job Type: Squeeze Perfs				
Sales Person: FLING, MATTHEW			Srvc Supervisor: PATTERSON, HARRY			MBU ID Emp #: 359371	

### Job Personnel

HES Emp Name	Exp Hrs	Emp #	HES Emp Name	Exp Hrs	Emp #	HES Emp Name	Exp Hrs	Emp #
PATTERSON, HARRY Louis	3.3	359371	SIPNEFSKI, ROBERT Anthony	3.3	419391	VASQUEZ, ALVARO A	3.3	401745
WILEY, JAMES A	3.3	440080						

### Equipment

HES Unit #	Distance-1 way	HES Unit #	Distance-1 way	HES Unit #	Distance-1 way	HES Unit #	Distance-1 way
10025030	14 mile	10241536C	14 mile	10248053C	14 mile	10829456	14 mile
11410470C	14 mile						

### Job Hours

Date	On Location Hours	Operating Hours	Date	On Location Hours	Operating Hours	Date	On Location Hours	Operating Hours
TOTAL			Total is the sum of each column separately					

### Job

Formation Name	Top	Bottom	Called Out	Date	Time	Time Zone
Formation Depth (MD)			On Location	11 - Jan - 2010	11:00	MST
Form Type	BHST		Job Started	18 - Jan - 2010	14:40	MST
Job depth MD	5020. ft	Job Depth TVD	Job Completed	18 - Jan - 2010	16:20	MST
Water Depth		Wk Ht Above Floor	Departed Loc	18 - Jan - 2010	17:47	MST
Perforation Depth (MD)	From	To		18 - Jan - 2010	18:25	MST

### Well Data

Description	New / Used	Max pressure psig	Size in	ID in	Weight lbm/ft	Thread	Grade	Top MD ft	Bottom MD ft	Top TVD ft	Bottom TVD ft
Casing	Used		4.5	4.	11.6				7762.		7762.
Tubing	Used		2.375	1.995	4.6				4950.		

### Tools and Accessories

Type	Size	Qty	Make	Depth	Type	Size	Qty	Make	Depth	Type	Size	Qty	Make
Guide Shoe					Packer					Top Plug			
Float Shoe					Bridge Plug					Bottom Plug			
Float Collar					Retainer					SSR plug set			
Insert Float										Plug Container			
Stage Tool										Centralizers			

### Miscellaneous Materials

Gelling Agt	Conc	Surfactant	Conc	Acid Type	Qty	Conc	%
Treatment Fld	Conc	Inhibitor	Conc	Sand Type	Size	Qty	

### Fluid Data

Stage/Plug #: 1	Fluid #	Stage Type	Fluid Name	Qty	Qty uom	Mixing Density lbm/gal	Yield ft3/sk	Mix Fluid Gal/sk	Rate bbl/min	Total Mix Fluid Gal/sk



Stage/Plug #: 1										
Fluid #	Stage Type	Fluid Name	Qty	Qty uom	Mixing Density lbm/gal	Yield ft <sup>3</sup> /sk	Mix Fluid Gal/sk	Rate bbl/min	Total Mix Fluid Gal/sk	
1	Cement 12.5#	ECONOCEM (TM) SYSTEM (452992)	300.0	sacks	12.5	1.96	10.7	3.0	10.7	
	10.7 Gal	FRESH WATER								
2	Tail Cement 15.8#	CMT - PREMIUM - CLASS G, 94 LB SK (100003685)	50.0	sacks	15.8	1.15	5.0		5.0	
	94 lbm	CMT - PREMIUM - CLASS G REG OR TYPE V, BULK (100003685)								
	4.989 Gal	FRESH WATER								
Calculated Values		Pressures		Volumes						
Displacement		Shut In: Instant		Lost Returns		Cement Slurry		Pad		
Top Of Cement		5 Min		Cement Returns		Actual Displacement		Treatment		
Frac Gradient		15 Min		Spacers		Load and Breakdown		Total Job		
Rates										
Circulating		Mixing	3	Displacement	3	Avg. Job	3			
Cement Left In Pipe	Amount	66 ft	Reason	Shoe Joint						
Frac Ring # 1 @	ID	Frac ring # 2 @	ID	Frac Ring # 3 @	ID	Frac Ring # 4 @	ID			
The Information Stated Herein Is Correct				Customer Representative Signature						

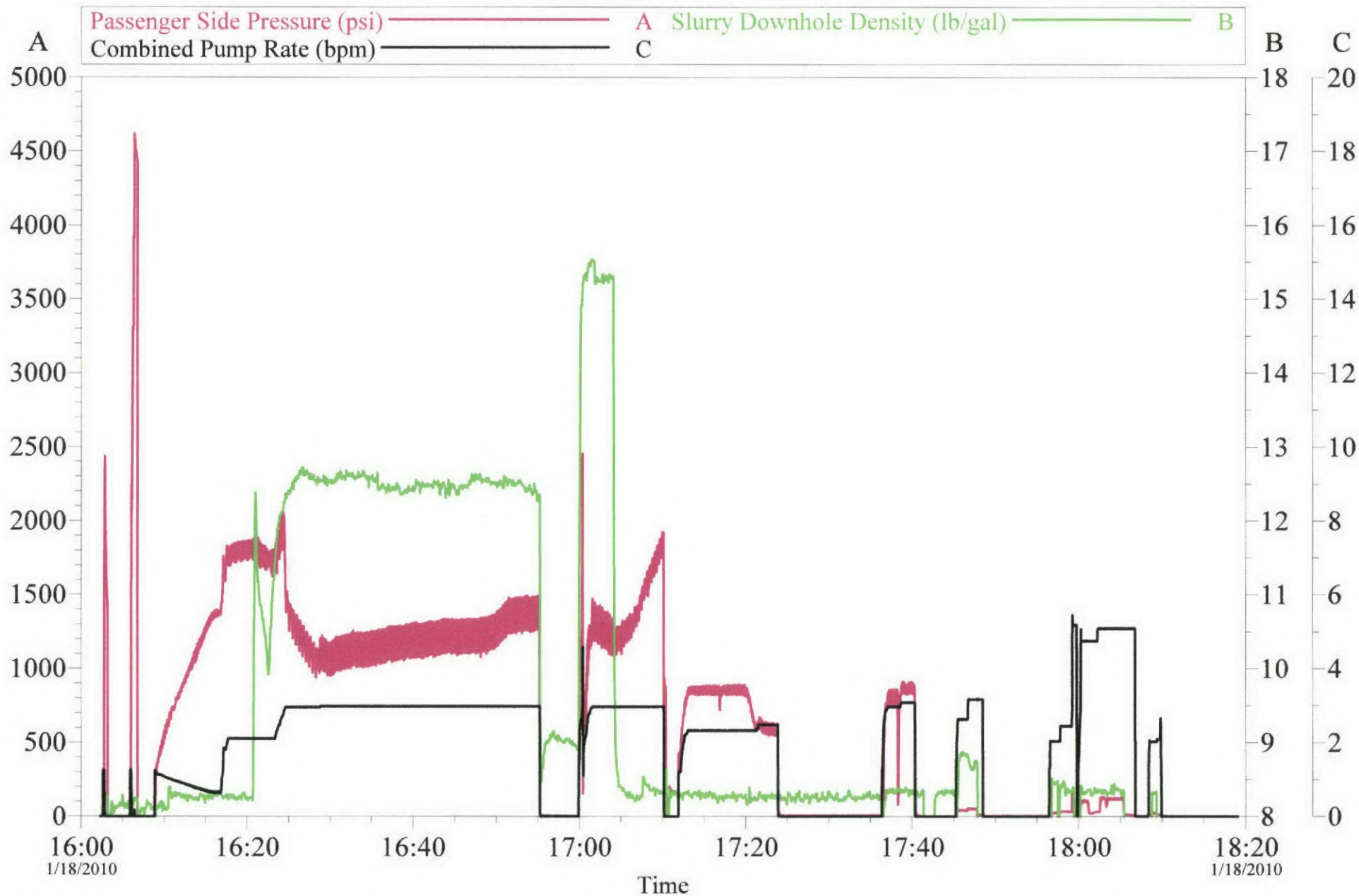
*The Road to Excellence Starts with Safety*

<b>Sold To #:</b> 300466	<b>Ship To #:</b> 2763975	<b>Quote #:</b>	<b>Sales Order #:</b> 7128534
<b>Customer:</b> ANADARKO PETROLEUM CORP - EBUS		<b>Customer Rep:</b> TUCKER, RUSTY	
<b>Well Name:</b> Alfred D Sater		<b>Well #:</b> Unit #1	<b>API/UWI #:</b> 05-123-08381-00
<b>Field:</b> WATTENBERG	<b>City (SAP):</b> FIRESTONE	<b>County/Parish:</b> Weld	<b>State:</b> Colorado
<b>Legal Description:</b>			
<b>Lat:</b> N 0 deg. OR N 0 deg. 0 min. 0 secs.		<b>Long:</b> E 0 deg. OR E 0 deg. 0 min. 0 secs.	
<b>Contractor:</b> Eastern Colorado Well Service		<b>Rig/Platform Name/Num:</b>	
<b>Job Purpose:</b> Squeeze Perfs			<b>Ticket Amount:</b>
<b>Well Type:</b> Producing Well		<b>Job Type:</b> Squeeze Perfs	
<b>Sales Person:</b> FLING, MATTHEW		<b>Srv Supervisor:</b> PATTERSON, HARRY	<b>MBU ID Emp #:</b> 359371

Activity Description	Date/Time	Cht #	Rate bbl/min	Volume bbl		Pressure psig		Comments
				Stage	Total	Tubing	Casing	
Arrive at Location from Service Center	01/18/2010 14:30							
Pre-Rig Up Safety Meeting	01/18/2010 14:45							
Rig-Up Equipment	01/18/2010 14:50							
Pre-Job Safety Meeting	01/18/2010 16:00							
Start Job	01/18/2010 16:20							
Test Lines	01/18/2010 16:25							4500 PSI
Pump Spacer	01/18/2010 16:30		3	15			1835.0	WATER
Pump Lead Cement	01/18/2010 16:40		3	104.7			1100.0	300 SKS 104.7 BBL ECONOCEM @ 12.5 PPG
Pump Tail Cement	01/18/2010 17:10		3	10.2			1200.0	50 SKS 10.2 BBL TAIL CMT @ OVER 15PPG PER CO MAN
Pump Displacement - End	01/18/2010 17:11		3	18			1370.0	WATER
Reverse Circ Well	01/18/2010 17:16		3	37			872.0	WATER
End Job	01/18/2010 17:47							
Post-Job Safety Meeting (Pre Rig-Down)	01/18/2010 17:52							
Rig-Down Equipment	01/18/2010 17:55							
Depart Location Safety Meeting	01/18/2010 18:20							
Depart Location for Service Center or Other Site	01/18/2010 18:25							THANKS LOU AND CREW



# NOBLE SQUEEZE ALFRED D SATER UNIT 1



Customer: Halliburton  
Well Description: RTD

Job Date: 18-Jan-2010  
UWI:

Sales Order #: 16:02:20

OptiCem v6.4.2  
19-Jan-10 13:35