

**OXY GRAND JUNCTION EBUSINESS
DO NOT MAIL
BROWNFIELD, Texas**

CC 697-16-A2

OXY/H&P/330

Post Job Summary Cement Surface Casing

Prepared for:
Date Prepared:
Version: 1

Service Supervisor: CRONKHITE, KENT

Submitted by:

HALLIBURTON

The Road to Excellence Starts with Safety

Sold To #: 344034	Ship To #: 344034	Quote #:	Sales Order #: 7099756
Customer: OXY GRAND JUNCTION EBUSINESS	Customer Rep: Benevides, Simon		
Well Name: CC	Well #: 697-16-A2	API/UWI #:	
Field:	City (SAP): BROWNFIELD	County/Parish:	State: Colorado
Contractor: OXY	Rig/Platform Name/Num: H&P 330		
Job Purpose: Cement Surface Casing			
Well Type: Development Well	Job Type: Cement Surface Casing		
Sales Person: DUNNING, DUSTIN	Srv Supervisor: CRONKHITE, KENT	MBU ID Emp #: 336769	

Job Personnel

HES Emp Name	Exp Hrs	Emp #	HES Emp Name	Exp Hrs	Emp #	HES Emp Name	Exp Hrs	Emp #
BLANCHETTE, JAMES George	32	371360	BRUN, JUSTIN M	32	459269	CLARKE, GERALD C	32	441763
CRONKHITE, KENT Alan	32	336769	MAIN, CHAD R	32	335770	SULLIVAN, MARK W	32	425453
TRIPLETT, MICHAEL Anthony	32	447908	YOUNG, JEREMY R	32	418013			

Equipment

HES Unit #	Distance-1 way	HES Unit #	Distance-1 way	HES Unit #	Distance-1 way	HES Unit #	Distance-1 way
10551730C	70 mile	10592964	70 mile	10744549	70 mile	10783473	70 mile
10804487	70 mile	10822535	70 mile	10829469	70 mile	10856450	70 mile
10867304	70 mile	10998054	70 mile				

Job Hours

Date	On Location Hours	Operating Hours	Date	On Location Hours	Operating Hours	Date	On Location Hours	Operating Hours
1/15/10	14	8	1/16/10	18	8			

TOTAL	Total is the sum of each column separately							
-------	--	--	--	--	--	--	--	--

Job

Job Times

Formation Name	Formation Depth (MD)	Top	Bottom	Form Type	Job depth MD	Job Depth TVD	Water Depth	Perforation Depth (MD)	From	To	Called Out	Date	Time	Time Zone
		0	2760	BHST	2760. m	2723. m		Wk Ht Above Floor		3. m	On Location	15 - Jan - 2010	10:00	MST
											Job Started	15 - Jan - 2010	17:16	MST
											Job Completed			
											Departed Loc			

Well Data

Description	New / Used	Max pressure MPa	Size mm	ID mm	Weight kg/m	Thread	Grade	Top MD m	Bottom MD m	Top TVD m	Bottom TVD m
-------------	------------	------------------	---------	-------	-------------	--------	-------	----------	-------------	-----------	--------------

Sales/Rental/3rd Party (HES)

Description	Qty	Qty uom	Depth	Supplier
PLUG,CMTG,TOP,9 5/8,HWE,8.16 MIN/9.06 MA	1	EA		
PORT. DAS W/CEMWIN;ACQUIRE W/HES, ZI	1	JOB		
ADC (AUTO DENSITY CTRL) SYS, /JOB,ZI	1	JOB		

Tools and Accessories

Type	Size	Qty	Make	Depth	Type	Size	Qty	Make	Depth	Type	Size	Qty	Make
Guide Shoe					Packer					Top Plug	9.625	1	
Float Shoe					Bridge Plug					Bottom Plug			
Float Collar					Retainer					SSR plug set			
Insert Float										Plug Container	9.625	1	
Stage Tool										Centralizers			

Miscellaneous Materials

Gelling Agt	Conc	Surfactant	Conc	Acid Type	Qty	Conc	%
Treatment Fld	Conc	Inhibitor	Conc	Sand Type	Size	Qty	

Fluid Data									
Stage/Plug #: 1									
Fluid #	Stage Type	Fluid Name	Qty	Qty uom	Mixing Density kg/m3	Yield m3/sk	Mix Fluid m3/tonne	Rate m3/min	Total Mix Fluid m3/tonne
1	WATER SPACER		20	bbl	8.33	.0	.0	.0	
2	SUPERFLUSH 101		20	bbl	10.	.0	.0	.0	
3	WATER SPACER		20	bbl	.	.0	.0	.0	
4	Lead Cement	VERSACEM (TM) SYSTEM (452010)	1300	sacks	12.3	2.33	12.62		12.62
5	Tail Cement	VERSACEM (TM) SYSTEM (452010)	125	sacks	12.8	2.07	10.67		10.67
6	DISPLACEMENT		204	bbl	.	.0	.0	.0	
7	Topout Cement	HALCEM (TM) SYSTEM (452986)	758	sacks	15.8	1.15	5.0		5.0
5 Gal		FRESH WATER							
Calculated Values		Pressures		Volumes					
Displacement	207	Shut In: Instant		Lost Returns		Cement Slurry	585.48	Pad	
Top Of Cement	SURFACE	5 Min		Cement Returns	0	Actual Displacement	204	Treatment	
Frac Gradient		15 Min		Spacers	40	Load and Breakdown		Total Job	829.48
Rates									
Circulating	RIG	Mixing	5	Displacement	5	Avg. Job	5		
Cement Left In Pipe	Amount	42 ft	Reason	Shoe Joint					
Frac Ring # 1 @	ID	Frac ring # 2 @	ID	Frac Ring # 3 @	ID	Frac Ring # 4 @	ID		
The Information Stated Herein Is Correct				Customer Representative Signature					

The Road to Excellence Starts with Safety

Sold To #: 344034		Ship To #: 344034		Quote #:		Sales Order #: 7099756	
Customer: OXY GRAND JUNCTION EBUSINESS				Customer Rep: Benevides, Simon			
Well Name: CC		Well #: 697-16-A2		API/UWI #:			
Field:		City (SAP): BROWNFIELD		County/Parish:		State: Colorado	
Legal Description:							
Lat: N 0 deg. OR N 0 deg. 0 min. 0 secs.				Long: E 0 deg. OR E 0 deg. 0 min. 0 secs.			
Contractor: OXY		Rig/Platform Name/Num: H&P 330					
Job Purpose: Cement Surface Casing						Ticket Amount:	
Well Type: Development Well				Job Type: Cement Surface Casing			
Sales Person: DUNNING, DUSTIN		Srv Supervisor: CRONKHITE, KENT		MBU ID Emp #: 336769			

Activity Description	Date/Time	Cht #	Rate m3/min	Volume m3		Pressure MPa		Comments
				Stage	Total	Tubing	Casing	
Call Out	01/15/2010 02:00							ELITE 2
Depart Yard Safety Meeting	01/15/2010 04:30							
Crew Leave Yard	01/15/2010 04:52							
Arrive At Loc	01/15/2010 10:00							ARRIVED EARLY DID NOT START CHARGE
Assessment Of Location Safety Meeting	01/15/2010 10:05							
Pre-Rig Up Safety Meeting	01/15/2010 15:00							
Rig-Up Equipment	01/15/2010 15:10							
Pre-Job Safety Meeting	01/15/2010 17:00							
Rig-Up Completed	01/15/2010 17:16							
Start Job	01/15/2010 17:16							TD 2760, TP 2723, SJ 42, MUD 8.9, HOLE 14 3/4, PARACITE STRING 2500FT
Test Lines	01/15/2010 17:21					5400.0		
Pump Spacer	01/15/2010 17:24		4	20	20		120.0	H2O
Pump Spacer	01/15/2010 17:29		4	20	20		120.0	SUPER FLUSH
Pump Spacer	01/15/2010 17:34		5	20	20		136.0	H2O
Pump Lead Cement	01/15/2010 17:42		5	539.46	539.46		100.0	1300 SKS, 12.3 PPG, 2.33 YIELD, 12.62 GAL/SK

Activity Description	Date/Time	Cht #	Rate m3/min	Volume m3		Pressure MPa		Comments
				Stage	Total	Tubing	Casing	
Pump Tail Cement	01/15/2010 19:58		5	46.08	46.08		97.0	125 SKS, 12.8 PPG, 2.07 YIELD, 10.67 GAL/SK
Shutdown	01/15/2010 20:13							drop top plug
Pump Displacement	01/15/2010 20:14		8	207.2	100		208.0	H2O
Slow Rate	01/15/2010 20:27		5	100	100		129.0	
Bump Plug	01/15/2010 20:50		2	207.2	204		660.0	
End Job	01/15/2010 20:51							DID NOT GET CEMENT TO SURFACE WAIT TO DO TOP OUT. CALCULATED TOP OF CEMENT WITH LIFT PRESSURE 2452 FT
Check Floats	01/15/2010 20:56							FLOATS HELD. PUMPED 10 BBLS OF SUGAR WATER DOWN PARACITE STRING SET AT 2500FT
Start Job	01/16/2010 01:48							TOP OUT 1
Other	01/16/2010 01:48		2	1	1		50.0	FILL LINES
Pump Cement	01/16/2010 01:48		2.5	30.7	30.7		100.0	150 SKS, 15.8 PPG, 1.15 YIELD, 5 GAL/SK, 3 BAGS OF CALCIUM CHLORIDE
Pump Displacement	01/16/2010 02:02		2.5	2	2		100.0	H2O
Shutdown	01/16/2010 02:04							DID NOT GET CEMENT TO SURFACE
Start Job	01/16/2010 04:38							TOP OUT 2
Other	01/16/2010 04:38		2	1	1		50.0	FILL LINES
Pump Cement	01/16/2010 04:38		2.5	40.9	40.9		100.0	200SKS, 15.8 PPG, 1.15 YIELD, 5 GAL/SK, 3 BAGS OF CALCIUM CHLORIDE
Pump Displacement	01/16/2010 05:03		2.5	1	1		100.0	H2O
Shutdown	01/16/2010 05:04							DID NOT GET CEMENT TO SURFACE

Sold To # : 344034

Ship To # : 344034

Quote # :

Sales Order # :

7099756

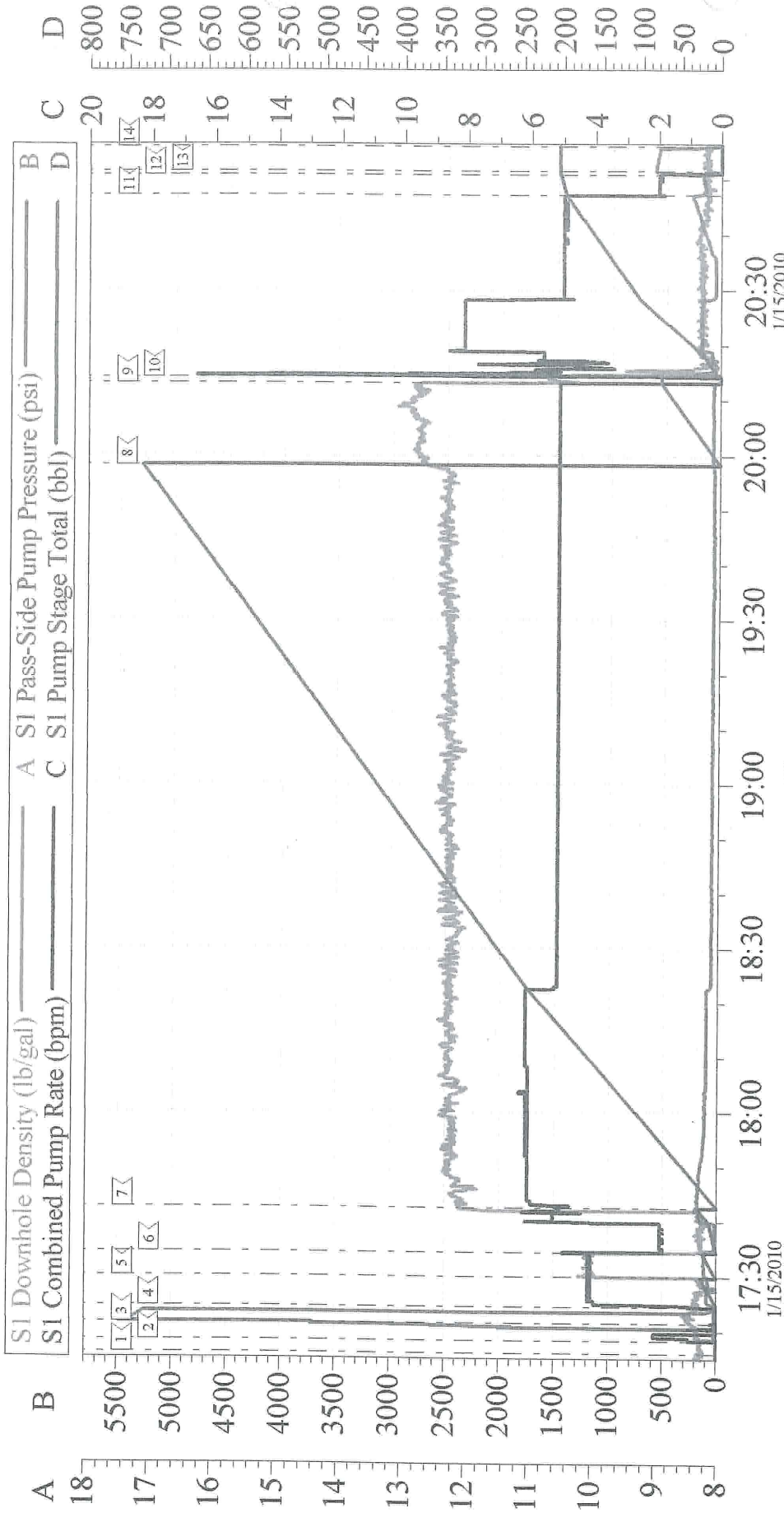
SUMMIT Version: 7.20.130

Saturday, January 16, 2010 04:29:00

Activity Description	Date/Time	Cht #	Rate m3/ min	Volume m3		Pressure MPa		Comments
				Stage	Total	Tubing	Casing	
Start Job	01/16/2010 08:52							START TOP OUT 3
Other	01/16/2010 08:52		1	1	1		50.0	H2O FILL LINES
Pump Cement	01/16/2010 08:53		2	30.7	30.7		100.0	150 SKS, 15.8 PPG, 1.15 YIELD, 5 GAL/SK, 3 BAGS OF CALCIUM CHLORIDE
Pump Displacement	01/16/2010 09:07		2	1	1		100.0	H2O
Shutdown	01/16/2010 09:08							DID NOT GET CEMENT TO SURFACE
Start Job	01/16/2010 11:37							START TOP OUT 4
Other	01/16/2010 11:37		1	1	1			FILL LINES
Pump Cement	01/16/2010 11:38		2	30.7	30.7		70.0	150 SKS, 15.8 PPG, 1.15 YIELD, 5 GAL/SK, 3 BAGS OF CALCIUM CHLORIDE
Pump Displacement	01/16/2010 11:53		2	1	1		70.0	H2O
Shutdown	01/16/2010 11:54							DID NOT GET CEMENT TO SURFACE
Start Job	01/16/2010 14:01							START TOP OUT 5
Other	01/16/2010 14:01		1	1	1			FILL LINES
Pump Cement	01/16/2010 14:09		2	32	32		70.0	108 SKS, 13.5 PPG
Pump Displacement	01/16/2010 14:31		1	1	1		70.0	H2O
Shutdown	01/16/2010 14:32							CEMENT TO SURFACE
End Job	01/16/2010 14:33							

Oxy

9 5/8" Surface

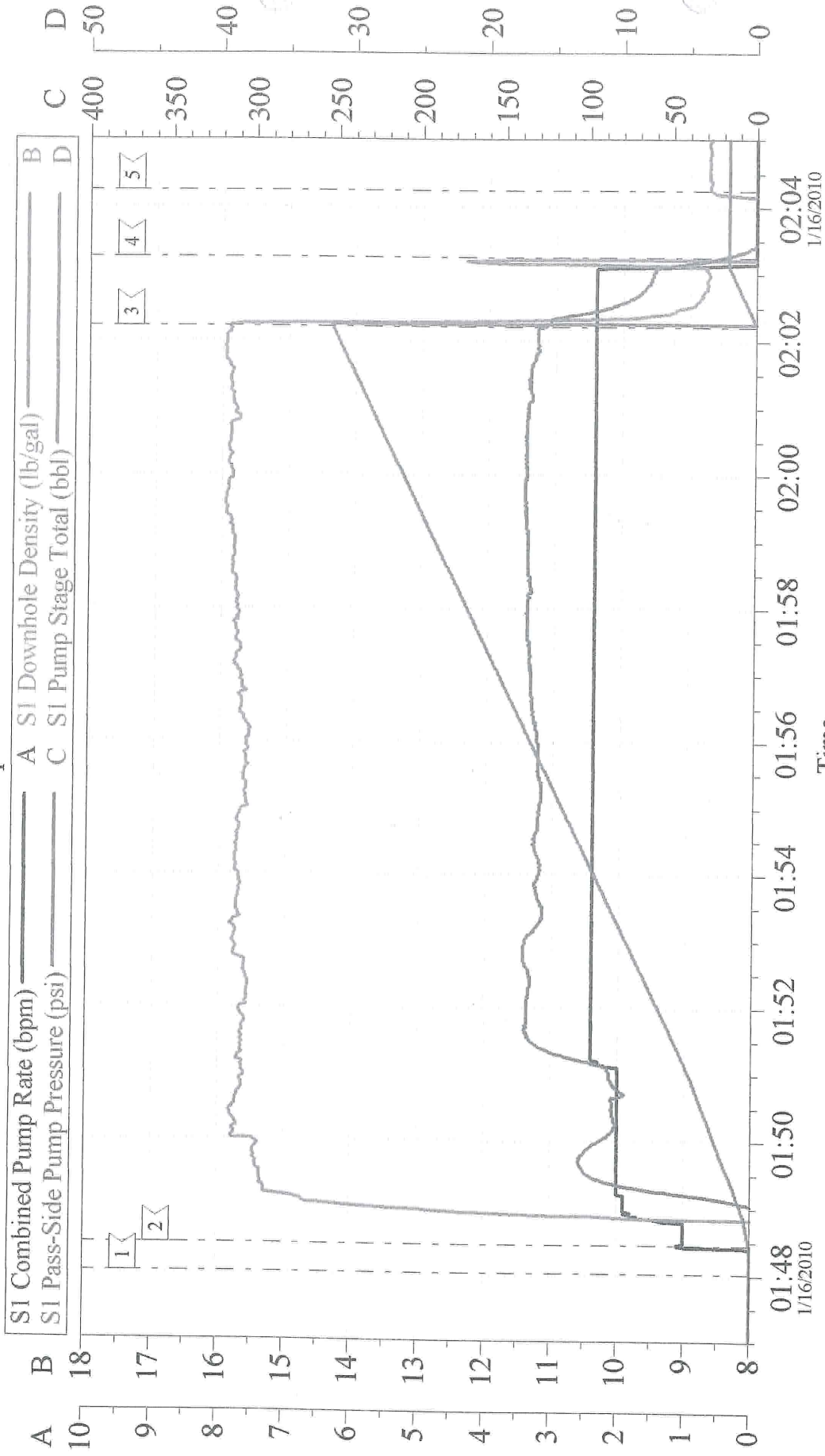


Customer: OXY GRAND JUNCTION EBUSINESS
Well Description: CC 697-16-A2
Company Rep: Simon Benevides

Job Date: 15-Jan-2010
Job Type: Surface
Cement Supervisor: Kent Cronkhite

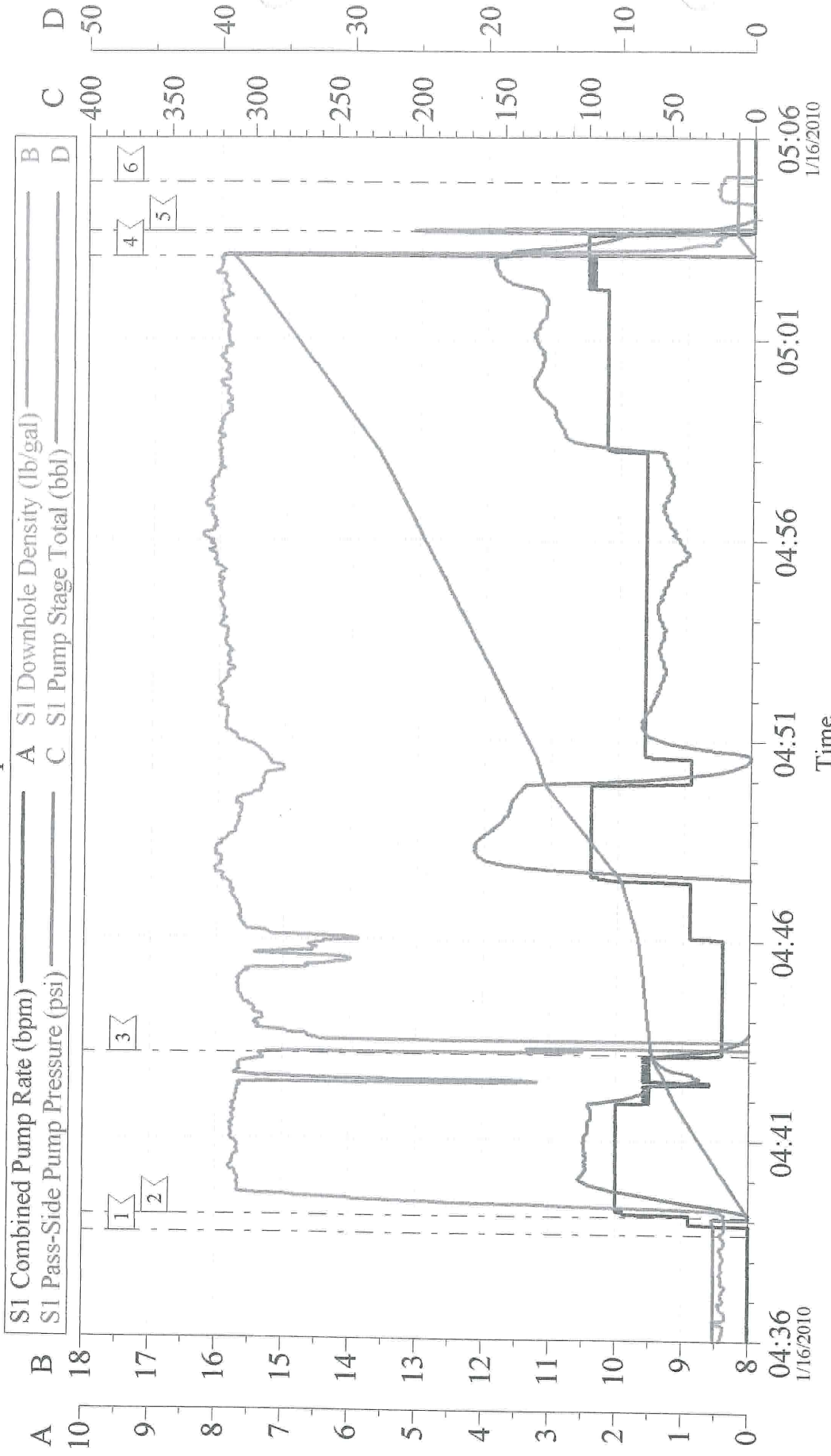
Sales Order #: 7099756
ADC Used?: Yes
Elite #/Operator: 2/Mike Triplett

Oxy Top Out #1



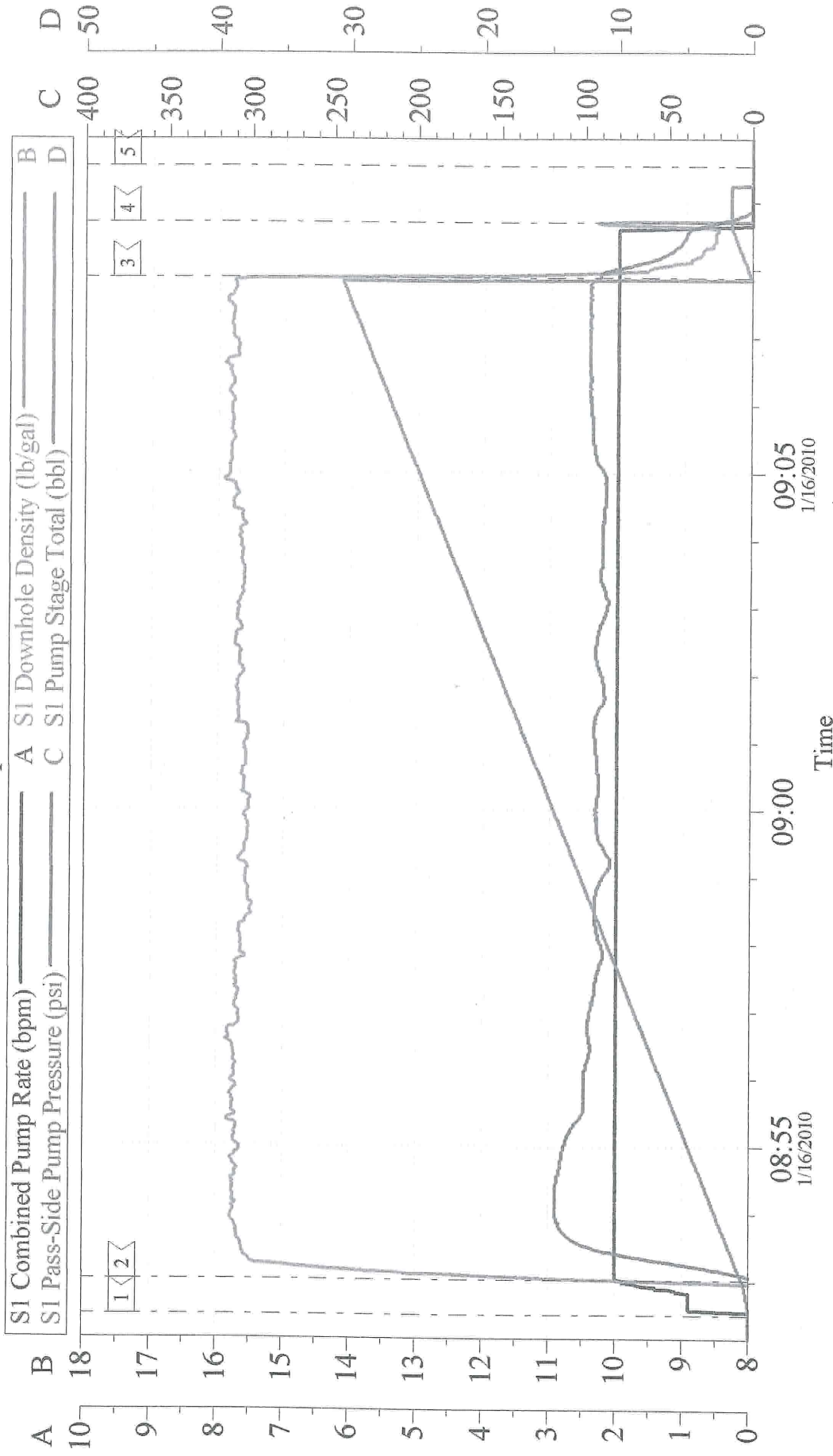
Customer: Oxy	Job Date: 15-Jan-2010	Sales Order #: 7099756
Well Description: CC 697-16-A2	Job Type: Surface	ADC Used?: Yes
Company Rep: Simon Benevides	Cent Supervisor: Kent Cronkhite	Elites#/Operator: 2/Mike Triplett

Oxy Top Out #2



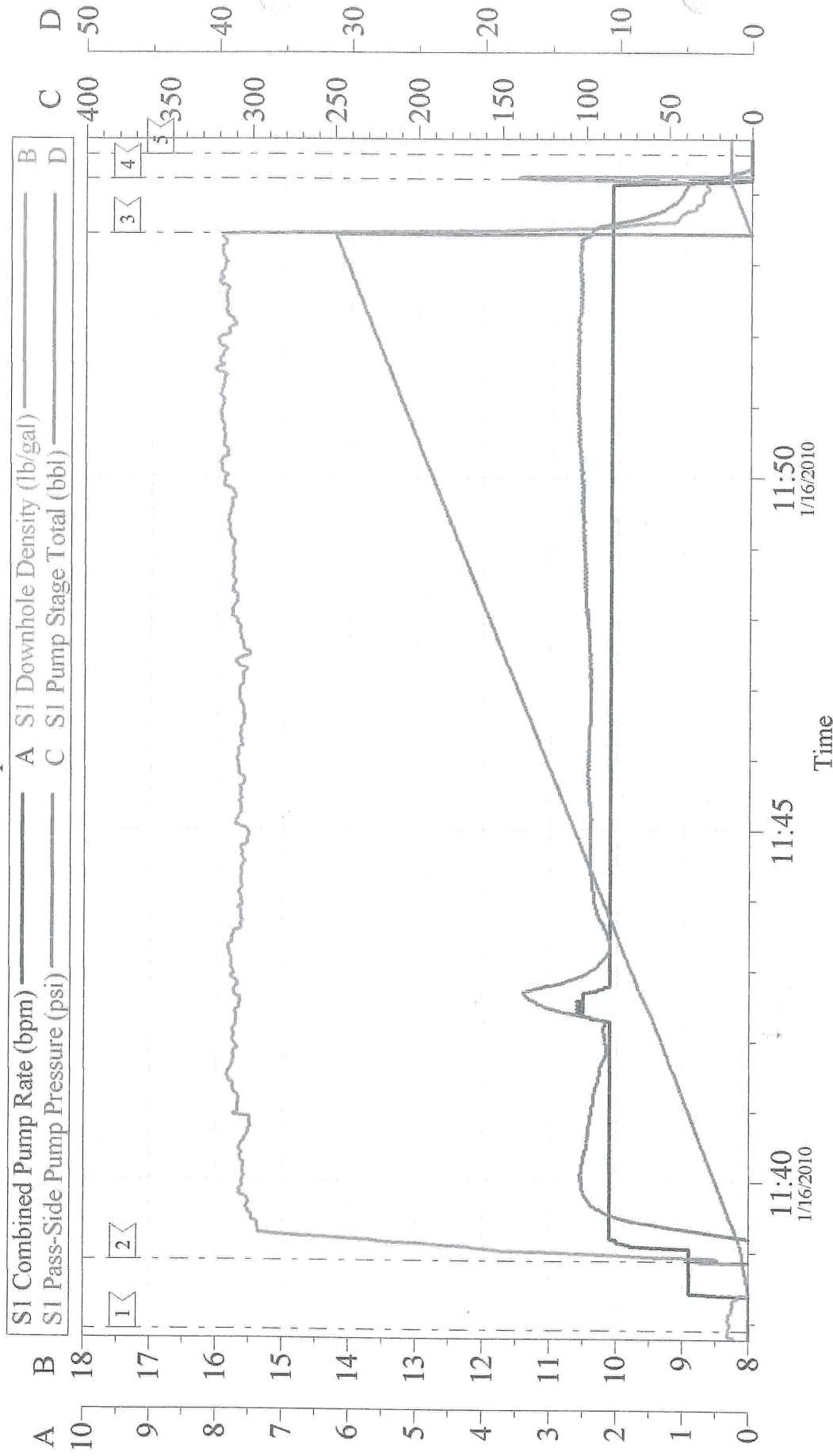
Customer: Oxy	Job Date: 16-Jan-2010	Sales Order #: 7099756
Well Description: CC 697-16-A2	Job Type: Surface	ADC Used?: Yes
Company Rep: Simon Benevides	Cent Supervisor: Kent Cronkite	Elite#/Operator: 2/Jeremy Young

Oxy Top Out #3



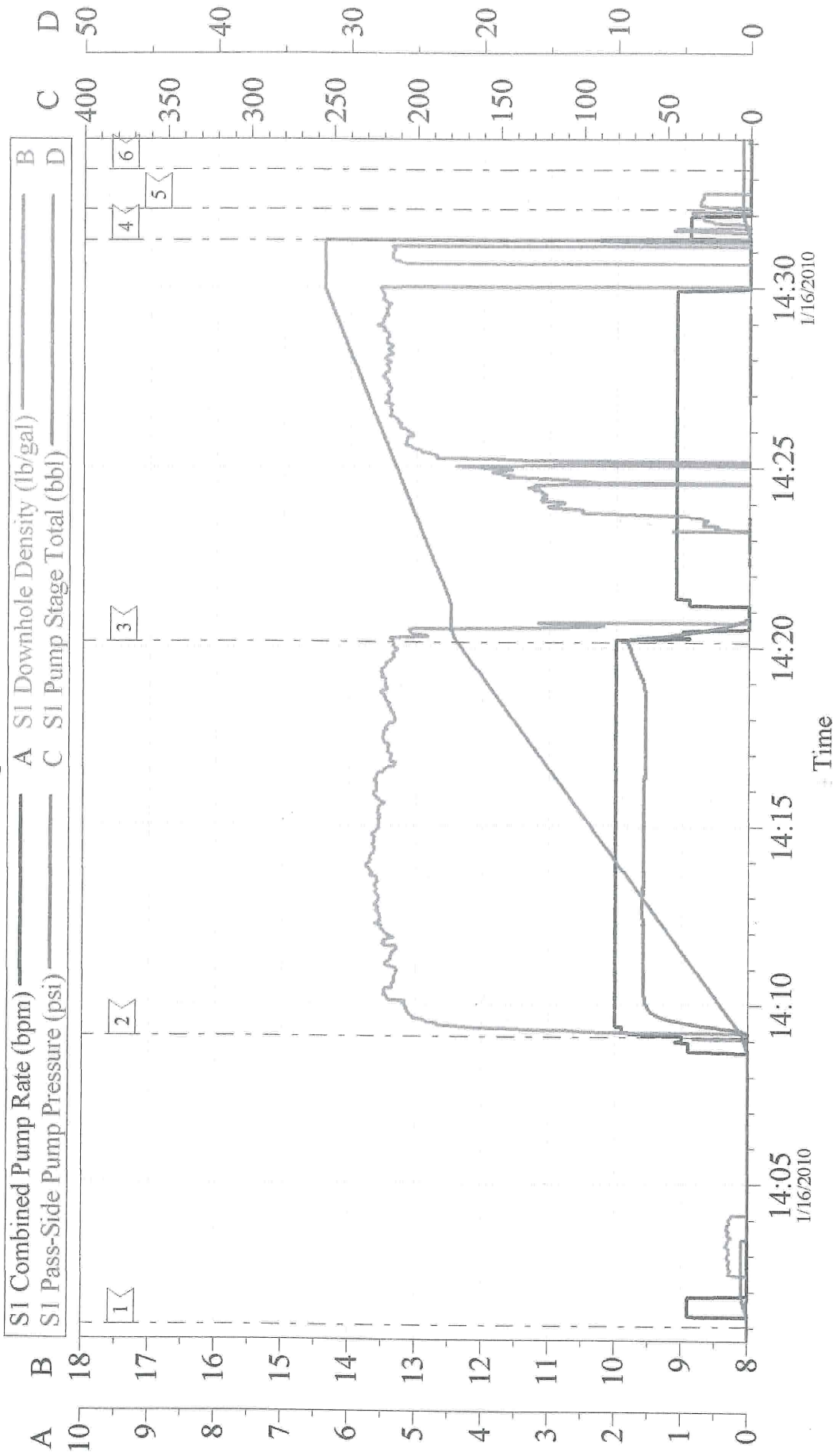
Customer: Oxy	Job Date: 16-Jan-2010	Sales Order #: 7099756
Well Description: CC 697-16-A2	Job Type: Surface	ADC Used?: Yes
Company Rep: Simon Benevides	Cent Supervisor: Kent Cronkhite	Elite#/Operator: 2/Jeremy Young

Oxy Top Out #4



Customer: Oxy	Job Date: 16-Jan-2010	Sales Order #: 7099756
Well Description: CC 697-16-A2	Job Type: Surface	ADC Used?: Yes
Company Rep: Simon Benevides	Cent Supervisor: Kent Cronkrite	Elite#/Operator: 2/Jeremy Young

Oxy Top Out #5



Customer: Oxy	Job Date: 16-Jan-2010	Sales Order #: 7099756
Well Description: CC 697-16-A2	Job Type: Surface	ADC Used?: Yes
Company Rep: Simon Benevides	Cent Supervisor: Kent Cronkhite	Elite#/Operator: 2/Jeremy Young