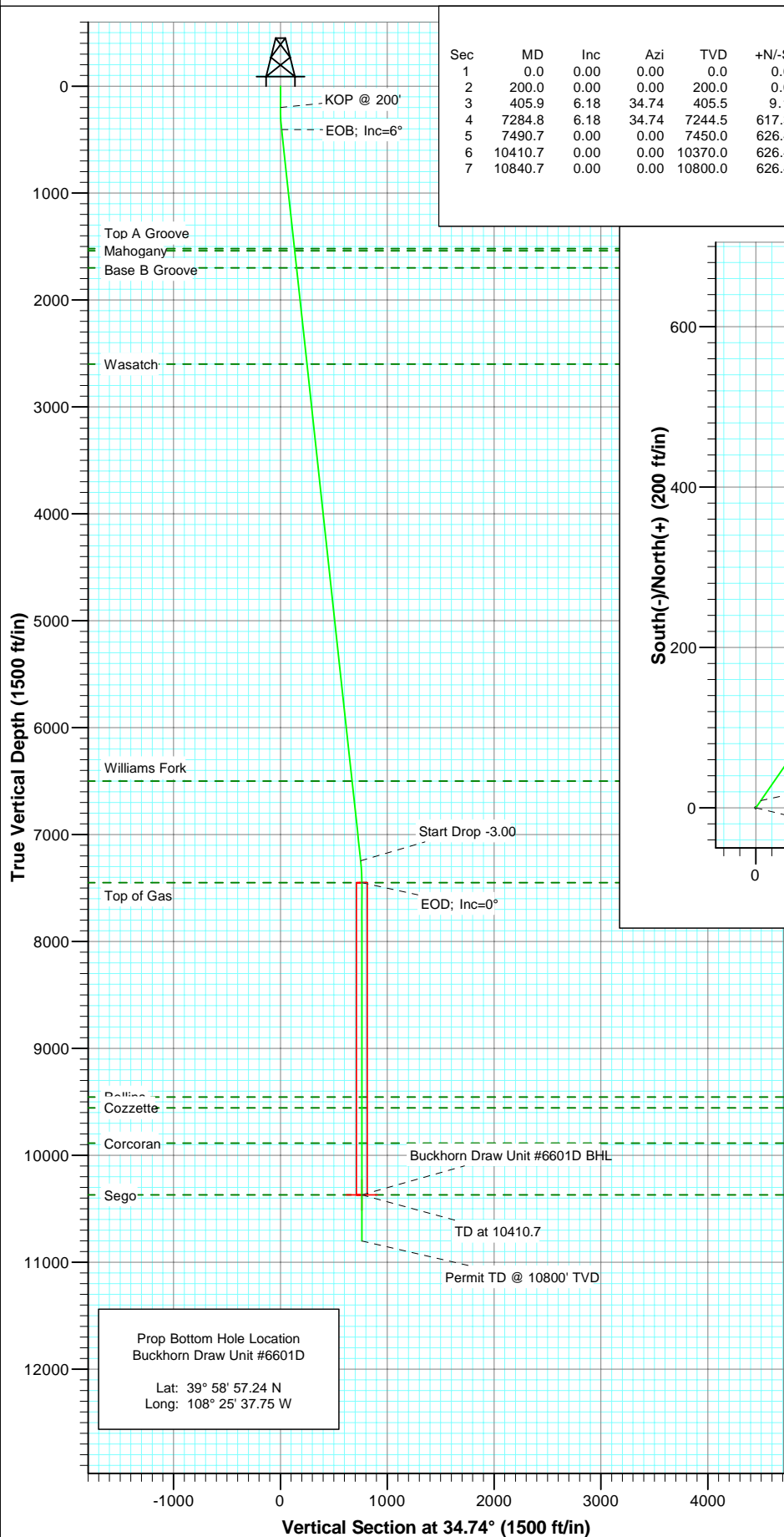
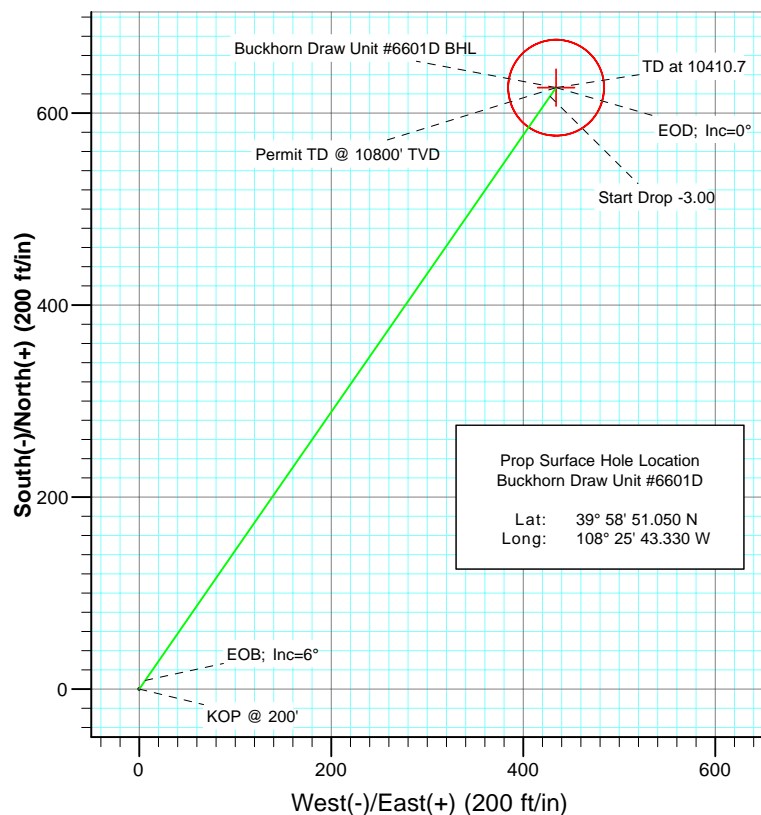




Project: CO, Rio Blanco County
Site: H07 198
Well: Buckhorn Draw Unit #6601D
Wellbore: DD
Plan: Plan #1



SECTION DETAILS										
Sec	MD	Inc	Azi	TVD	+N/-S	+E/-W	DLeg	TFace	VSec	Target
1	0.0	0.00	0.00	0.0	0.0	0.0	0.00	0.00	0.0	Buckhorn Draw Unit #6601D BHL
2	200.0	0.00	0.00	200.0	0.0	0.0	0.00	0.00	0.0	
3	405.9	6.18	34.74	405.5	9.1	6.3	3.00	34.74	11.1	
4	7284.8	6.18	34.74	7244.5	617.3	428.1	0.00	0.00	751.2	
5	7490.7	0.00	0.00	7450.0	626.4	434.4	3.00	180.00	762.3	
6	10410.7	0.00	0.00	10370.0	626.4	434.4	0.00	0.00	762.3	
7	10840.7	0.00	0.00	10800.0	626.4	434.4	0.00	0.00	762.3	



FORMATION TOP DETAILS		
TVDPath	MDPath	Formation
1520.0	1526.9	Top A Groove
1540.0	1547.0	Mahogany
1700.0	1708.0	Base B Groove
2600.0	2613.2	Wasatch
6500.0	6536.0	Williams Fork
7450.0	7490.7	Top of Gas
9455.0	9495.7	Rollins
9555.0	9595.7	Cozzette
9885.0	9925.7	Corcoran
10370.0	10410.7	Sego



Azimuths to True North
Magnetic North: 10.83°
Magnetic Field
Strength: 52668.2snT
Dip Angle: 66.07°
Date: 6/29/2009
Model: IGRF2005

DESIGN DETAILS: Plan #1

Job# 95xxx; LR
WELL @ 6373.0ft (Original Well Elev)

Target	Azimuth	Origin	Type	N/S	E/W	From TVD
Buckhorn Draw Unit #6601D BHL	34.74	Slot		0.0	0.0	0.0

Cathedral Energy Services

Planning Report

Database:	EDM 2003.21 US Multi Users DB	Local Co-ordinate Reference:	Well Buckhorn Draw Unit #6601D
Company:	EnCana Oil & Gas (USA) Inc	TVD Reference:	WELL @ 6373.0ft (Original Well Elev)
Project:	CO, Rio Blanco County	MD Reference:	WELL @ 6373.0ft (Original Well Elev)
Site:	H07 198	North Reference:	True
Well:	Buckhorn Draw Unit #6601D	Survey Calculation Method:	Minimum Curvature
Wellbore:	DD		
Design:	Plan #1		

Project	CO, Rio Blanco County		
Map System:	US State Plane 1983	System Datum:	Mean Sea Level
Geo Datum:	North American Datum 1983		
Map Zone:	Colorado Central Zone		

Site		H07 198			
Site Position:		Northing:	547,236.34 m	Latitude:	39° 58' 51.050 N
From:	Lat/Long	Easting:	664,268.61 m	Longitude:	108° 25' 43.330 W
Position Uncertainty:	0.0 ft	Slot Radius:	in	Grid Convergence:	-1.85 °

Well	Buckhorn Draw Unit #6601D					
Well Position	+N/-S	0.0 ft	Northing:	547,236.34 m	Latitude:	39° 58' 51.050 N
	+E/-W	0.0 ft	Easting:	664,268.61 m	Longitude:	108° 25' 43.330 W
Position Uncertainty		0.0 ft	Wellhead Elevation:	ft	Ground Level:	6,355.0 ft

Wellbore	DD				
Magnetics	Model Name	Sample Date	Declination	Dip Angle	Field Strength
			(°)	(°)	(nT)
	IGRF2005	6/29/2009	10.83	66.07	52,668

Design	Plan #1				
Audit Notes:					
Version:	Phase:	PLAN	Tie On Depth:	0.0	
Vertical Section:	Depth From (TVD)	+N/-S	+E/-W	Direction	
	(ft)	(ft)	(ft)	(°)	
	0.0	0.0	0.0	34.74	

Plan Sections										
Measured Depth	Inclination	Azimuth	Vertical Depth	+N/-S	+E/-W	Dogleg Rate	Build Rate	Turn Rate	TFO	Target
(ft)	(°)	(°)	(ft)	(ft)	(ft)	(°/100ft)	(°/100ft)	(°/100ft)	(°)	
0.0	0.00	0.00	0.0	0.0	0.0	0.00	0.00	0.00	0.00	
200.0	0.00	0.00	200.0	0.0	0.0	0.00	0.00	0.00	0.00	
405.9	6.18	34.74	405.5	9.1	6.3	3.00	3.00	0.00	34.74	
7,284.8	6.18	34.74	7,244.5	617.3	428.1	0.00	0.00	0.00	0.00	
7,490.7	0.00	0.00	7,450.0	626.4	434.4	3.00	-3.00	0.00	180.00	
10,410.7	0.00	0.00	10,370.0	626.4	434.4	0.00	0.00	0.00	0.00	Buckhorn Draw Unit #
10,840.7	0.00	0.00	10,800.0	626.4	434.4	0.00	0.00	0.00	0.00	

Cathedral Energy Services

Planning Report

Database:	EDM 2003.21 US Multi Users DB	Local Co-ordinate Reference:	Well Buckhorn Draw Unit #6601D
Company:	EnCana Oil & Gas (USA) Inc	TVD Reference:	WELL @ 6373.0ft (Original Well Elev)
Project:	CO, Rio Blanco County	MD Reference:	WELL @ 6373.0ft (Original Well Elev)
Site:	H07 198	North Reference:	True
Well:	Buckhorn Draw Unit #6601D	Survey Calculation Method:	Minimum Curvature
Wellbore:	DD		
Design:	Plan #1		

Planned Survey

Measured Depth (ft)	Inclination (°)	Azimuth (°)	Vertical Depth (ft)	+N/-S (ft)	+E/-W (ft)	Vertical Section (ft)	Dogleg Rate (°/100ft)	Build Rate (°/100ft)	Comments / Formations
0.0	0.00	0.00	0.0	0.0	0.0	0.0	0.00	0.00	
100.0	0.00	0.00	100.0	0.0	0.0	0.0	0.00	0.00	
200.0	0.00	0.00	200.0	0.0	0.0	0.0	0.00	0.00	KOP @ 200'
300.0	3.00	34.74	300.0	2.2	1.5	2.6	3.00	3.00	
400.0	6.00	34.74	399.6	8.6	6.0	10.5	3.00	3.00	
405.9	6.18	34.74	405.5	9.1	6.3	11.1	3.00	3.00	EOB; Inc=6°
500.0	6.18	34.74	499.1	17.4	12.1	21.2	0.00	0.00	
600.0	6.18	34.74	598.5	26.3	18.2	32.0	0.00	0.00	
700.0	6.18	34.74	697.9	35.1	24.3	42.7	0.00	0.00	
800.0	6.18	34.74	797.3	44.0	30.5	53.5	0.00	0.00	
900.0	6.18	34.74	896.7	52.8	36.6	64.2	0.00	0.00	
1,000.0	6.18	34.74	996.2	61.6	42.7	75.0	0.00	0.00	
1,100.0	6.18	34.74	1,095.6	70.5	48.9	85.8	0.00	0.00	
1,200.0	6.18	34.74	1,195.0	79.3	55.0	96.5	0.00	0.00	
1,300.0	6.18	34.74	1,294.4	88.2	61.1	107.3	0.00	0.00	
1,400.0	6.18	34.74	1,393.8	97.0	67.3	118.0	0.00	0.00	
1,500.0	6.18	34.74	1,493.3	105.8	73.4	128.8	0.00	0.00	
1,526.9	6.18	34.74	1,520.0	108.2	75.0	131.7	0.00	0.00	Top A Groove
1,547.0	6.18	34.74	1,540.0	110.0	76.3	133.9	0.00	0.00	Mahogany
1,600.0	6.18	34.74	1,592.7	114.7	79.5	139.6	0.00	0.00	
1,700.0	6.18	34.74	1,692.1	123.5	85.7	150.3	0.00	0.00	
1,708.0	6.18	34.74	1,700.0	124.2	86.1	151.2	0.00	0.00	Base B Groove
1,800.0	6.18	34.74	1,791.5	132.4	91.8	161.1	0.00	0.00	
1,900.0	6.18	34.74	1,890.9	141.2	97.9	171.8	0.00	0.00	
2,000.0	6.18	34.74	1,990.3	150.1	104.1	182.6	0.00	0.00	
2,100.0	6.18	34.74	2,089.8	158.9	110.2	193.4	0.00	0.00	
2,200.0	6.18	34.74	2,189.2	167.7	116.3	204.1	0.00	0.00	
2,300.0	6.18	34.74	2,288.6	176.6	122.4	214.9	0.00	0.00	
2,400.0	6.18	34.74	2,388.0	185.4	128.6	225.6	0.00	0.00	
2,500.0	6.18	34.74	2,487.4	194.3	134.7	236.4	0.00	0.00	
2,600.0	6.18	34.74	2,586.9	203.1	140.8	247.2	0.00	0.00	
2,613.2	6.18	34.74	2,600.0	204.3	141.6	248.6	0.00	0.00	Wasatch
2,700.0	6.18	34.74	2,686.3	211.9	147.0	257.9	0.00	0.00	
2,800.0	6.18	34.74	2,785.7	220.8	153.1	268.7	0.00	0.00	
2,900.0	6.18	34.74	2,885.1	229.6	159.2	279.4	0.00	0.00	
3,000.0	6.18	34.74	2,984.5	238.5	165.4	290.2	0.00	0.00	
3,100.0	6.18	34.74	3,084.0	247.3	171.5	300.9	0.00	0.00	
3,200.0	6.18	34.74	3,183.4	256.1	177.6	311.7	0.00	0.00	
3,300.0	6.18	34.74	3,282.8	265.0	183.8	322.5	0.00	0.00	
3,400.0	6.18	34.74	3,382.2	273.8	189.9	333.2	0.00	0.00	
3,500.0	6.18	34.74	3,481.6	282.7	196.0	344.0	0.00	0.00	
3,600.0	6.18	34.74	3,581.1	291.5	202.2	354.7	0.00	0.00	
3,700.0	6.18	34.74	3,680.5	300.4	208.3	365.5	0.00	0.00	
3,800.0	6.18	34.74	3,779.9	309.2	214.4	376.3	0.00	0.00	
3,900.0	6.18	34.74	3,879.3	318.0	220.5	387.0	0.00	0.00	
4,000.0	6.18	34.74	3,978.7	326.9	226.7	397.8	0.00	0.00	
4,100.0	6.18	34.74	4,078.2	335.7	232.8	408.5	0.00	0.00	
4,200.0	6.18	34.74	4,177.6	344.6	238.9	419.3	0.00	0.00	
4,300.0	6.18	34.74	4,277.0	353.4	245.1	430.1	0.00	0.00	
4,400.0	6.18	34.74	4,376.4	362.2	251.2	440.8	0.00	0.00	
4,500.0	6.18	34.74	4,475.8	371.1	257.3	451.6	0.00	0.00	
4,600.0	6.18	34.74	4,575.3	379.9	263.5	462.3	0.00	0.00	

Cathedral Energy Services

Planning Report

Database:	EDM 2003.21 US Multi Users DB	Local Co-ordinate Reference:	Well Buckhorn Draw Unit #6601D
Company:	EnCana Oil & Gas (USA) Inc	TVD Reference:	WELL @ 6373.0ft (Original Well Elev)
Project:	CO, Rio Blanco County	MD Reference:	WELL @ 6373.0ft (Original Well Elev)
Site:	H07 198	North Reference:	True
Well:	Buckhorn Draw Unit #6601D	Survey Calculation Method:	Minimum Curvature
Wellbore:	DD		
Design:	Plan #1		

Planned Survey

Measured Depth (ft)	Inclination (°)	Azimuth (°)	Vertical Depth (ft)	+N/-S (ft)	+E/-W (ft)	Vertical Section (ft)	Dogleg Rate (°/100ft)	Build Rate (°/100ft)	Comments / Formations
4,700.0	6.18	34.74	4,674.7	388.8	269.6	473.1	0.00	0.00	
4,800.0	6.18	34.74	4,774.1	397.6	275.7	483.9	0.00	0.00	
4,900.0	6.18	34.74	4,873.5	406.4	281.9	494.6	0.00	0.00	
5,000.0	6.18	34.74	4,972.9	415.3	288.0	505.4	0.00	0.00	
5,100.0	6.18	34.74	5,072.4	424.1	294.1	516.1	0.00	0.00	
5,200.0	6.18	34.74	5,171.8	433.0	300.2	526.9	0.00	0.00	
5,300.0	6.18	34.74	5,271.2	441.8	306.4	537.6	0.00	0.00	
5,400.0	6.18	34.74	5,370.6	450.7	312.5	548.4	0.00	0.00	
5,500.0	6.18	34.74	5,470.0	459.5	318.6	559.2	0.00	0.00	
5,600.0	6.18	34.74	5,569.5	468.3	324.8	569.9	0.00	0.00	
5,700.0	6.18	34.74	5,668.9	477.2	330.9	580.7	0.00	0.00	
5,800.0	6.18	34.74	5,768.3	486.0	337.0	591.4	0.00	0.00	
5,900.0	6.18	34.74	5,867.7	494.9	343.2	602.2	0.00	0.00	
6,000.0	6.18	34.74	5,967.1	503.7	349.3	613.0	0.00	0.00	
6,100.0	6.18	34.74	6,066.5	512.5	355.4	623.7	0.00	0.00	
6,200.0	6.18	34.74	6,166.0	521.4	361.6	634.5	0.00	0.00	
6,300.0	6.18	34.74	6,265.4	530.2	367.7	645.2	0.00	0.00	
6,400.0	6.18	34.74	6,364.8	539.1	373.8	656.0	0.00	0.00	
6,500.0	6.18	34.74	6,464.2	547.9	380.0	666.8	0.00	0.00	
6,536.0	6.18	34.74	6,500.0	551.1	382.2	670.6	0.00	0.00	Williams Fork
6,600.0	6.18	34.74	6,563.6	556.8	386.1	677.5	0.00	0.00	
6,700.0	6.18	34.74	6,663.1	565.6	392.2	688.3	0.00	0.00	
6,800.0	6.18	34.74	6,762.5	574.4	398.3	699.0	0.00	0.00	
6,900.0	6.18	34.74	6,861.9	583.3	404.5	709.8	0.00	0.00	
7,000.0	6.18	34.74	6,961.3	592.1	410.6	720.6	0.00	0.00	
7,100.0	6.18	34.74	7,060.7	601.0	416.7	731.3	0.00	0.00	
7,200.0	6.18	34.74	7,160.2	609.8	422.9	742.1	0.00	0.00	
7,284.8	6.18	34.74	7,244.5	617.3	428.1	751.2	0.00	0.00	Start Drop -3.00
7,300.0	5.72	34.74	7,259.6	618.6	429.0	752.8	3.00	-3.00	
7,400.0	2.72	34.74	7,359.3	624.6	433.2	760.1	3.00	-3.00	
7,490.7	0.00	0.00	7,450.0	626.4	434.4	762.3	3.00	-3.00	EOD; Inc=0° - Top of Gas
7,500.0	0.00	0.00	7,459.3	626.4	434.4	762.3	0.00	0.00	
7,600.0	0.00	0.00	7,559.3	626.4	434.4	762.3	0.00	0.00	
7,700.0	0.00	0.00	7,659.3	626.4	434.4	762.3	0.00	0.00	
7,800.0	0.00	0.00	7,759.3	626.4	434.4	762.3	0.00	0.00	
7,900.0	0.00	0.00	7,859.3	626.4	434.4	762.3	0.00	0.00	
8,000.0	0.00	0.00	7,959.3	626.4	434.4	762.3	0.00	0.00	
8,100.0	0.00	0.00	8,059.3	626.4	434.4	762.3	0.00	0.00	
8,200.0	0.00	0.00	8,159.3	626.4	434.4	762.3	0.00	0.00	
8,300.0	0.00	0.00	8,259.3	626.4	434.4	762.3	0.00	0.00	
8,400.0	0.00	0.00	8,359.3	626.4	434.4	762.3	0.00	0.00	
8,500.0	0.00	0.00	8,459.3	626.4	434.4	762.3	0.00	0.00	
8,600.0	0.00	0.00	8,559.3	626.4	434.4	762.3	0.00	0.00	
8,700.0	0.00	0.00	8,659.3	626.4	434.4	762.3	0.00	0.00	
8,800.0	0.00	0.00	8,759.3	626.4	434.4	762.3	0.00	0.00	
8,900.0	0.00	0.00	8,859.3	626.4	434.4	762.3	0.00	0.00	
9,000.0	0.00	0.00	8,959.3	626.4	434.4	762.3	0.00	0.00	
9,100.0	0.00	0.00	9,059.3	626.4	434.4	762.3	0.00	0.00	
9,200.0	0.00	0.00	9,159.3	626.4	434.4	762.3	0.00	0.00	
9,300.0	0.00	0.00	9,259.3	626.4	434.4	762.3	0.00	0.00	
9,400.0	0.00	0.00	9,359.3	626.4	434.4	762.3	0.00	0.00	
9,495.7	0.00	0.00	9,455.0	626.4	434.4	762.3	0.00	0.00	Rollins

Cathedral Energy Services

Planning Report

Database:	EDM 2003.21 US Multi Users DB	Local Co-ordinate Reference:	Well Buckhorn Draw Unit #6601D
Company:	EnCana Oil & Gas (USA) Inc	TVD Reference:	WELL @ 6373.0ft (Original Well Elev)
Project:	CO, Rio Blanco County	MD Reference:	WELL @ 6373.0ft (Original Well Elev)
Site:	H07 198	North Reference:	True
Well:	Buckhorn Draw Unit #6601D	Survey Calculation Method:	Minimum Curvature
Wellbore:	DD		
Design:	Plan #1		

Planned Survey

Measured Depth (ft)	Inclination (°)	Azimuth (°)	Vertical Depth (ft)	+N/-S (ft)	+E/-W (ft)	Vertical Section (ft)	Dogleg Rate (°/100ft)	Build Rate (°/100ft)	Comments / Formations
9,500.0	0.00	0.00	9,459.3	626.4	434.4	762.3	0.00	0.00	
9,595.7	0.00	0.00	9,555.0	626.4	434.4	762.3	0.00	0.00	Cozzette
9,600.0	0.00	0.00	9,559.3	626.4	434.4	762.3	0.00	0.00	
9,700.0	0.00	0.00	9,659.3	626.4	434.4	762.3	0.00	0.00	
9,800.0	0.00	0.00	9,759.3	626.4	434.4	762.3	0.00	0.00	
9,900.0	0.00	0.00	9,859.3	626.4	434.4	762.3	0.00	0.00	
9,925.7	0.00	0.00	9,885.0	626.4	434.4	762.3	0.00	0.00	Corcoran
10,000.0	0.00	0.00	9,959.3	626.4	434.4	762.3	0.00	0.00	
10,100.0	0.00	0.00	10,059.3	626.4	434.4	762.3	0.00	0.00	
10,200.0	0.00	0.00	10,159.3	626.4	434.4	762.3	0.00	0.00	
10,300.0	0.00	0.00	10,259.3	626.4	434.4	762.3	0.00	0.00	
10,400.0	0.00	0.00	10,359.3	626.4	434.4	762.3	0.00	0.00	
10,410.7	0.00	0.00	10,370.0	626.4	434.4	762.3	0.00	0.00	TD at 10410.7 - Sego - Buckhorn Draw Unit #66
10,500.0	0.00	0.00	10,459.3	626.4	434.4	762.3	0.00	0.00	
10,600.0	0.00	0.00	10,559.3	626.4	434.4	762.3	0.00	0.00	
10,700.0	0.00	0.00	10,659.3	626.4	434.4	762.3	0.00	0.00	
10,800.0	0.00	0.00	10,759.3	626.4	434.4	762.3	0.00	0.00	
10,840.7	0.00	0.00	10,800.0	626.4	434.4	762.3	0.00	0.00	Permit TD @ 10800' TVD

Targets

Target Name - hit/miss target - Shape	Dip Angle (°)	Dip Dir. (°)	TVD (ft)	+N/-S (ft)	+E/-W (ft)	Northing (m)	Easting (m)	Latitude	Longitude
Buckhorn Draw Unit #66 - plan hits target center - Circle (radius 50.0)	0.00	0.00	10,370.0	626.4	434.4	547,422.90	664,407.09	39° 58' 57.240 N	108° 25' 37.750 W

Formations

Measured Depth (ft)	Vertical Depth (ft)	Name	Lithology	Dip (°)	Dip Direction (°)
1,526.9	1,520.0	Top A Groove		0.00	
1,547.0	1,540.0	Mahogany		0.00	
1,708.0	1,700.0	Base B Groove		0.00	
2,613.2	2,600.0	Wasatch		0.00	
6,536.0	6,500.0	Williams Fork		0.00	
7,490.7	7,450.0	Top of Gas		0.00	
9,495.7	9,455.0	Rollins		0.00	
9,595.7	9,555.0	Cozzette		0.00	
9,925.7	9,885.0	Corcoran		0.00	
10,410.7	10,370.0	Sego		0.00	

Cathedral Energy Services

Planning Report

Database: EDM 2003.21 US Multi Users DB
Company: EnCana Oil & Gas (USA) Inc
Project: CO, Rio Blanco County
Site: H07 198
Well: Buckhorn Draw Unit #6601D
Wellbore: DD
Design: Plan #1

Local Co-ordinate Reference: Well Buckhorn Draw Unit #6601D
TVD Reference: WELL @ 6373.0ft (Original Well Elev)
MD Reference: WELL @ 6373.0ft (Original Well Elev)
North Reference: True
Survey Calculation Method: Minimum Curvature

Plan Annotations

Measured Depth (ft)	Vertical Depth (ft)	Local Coordinates		Comment
		+N/-S (ft)	+E/-W (ft)	
200.0	200.0	0.0	0.0	KOP @ 200'
405.9	405.5	9.1	6.3	EOB; Inc=6°
7,284.8	7,244.5	617.3	428.1	Start Drop -3.00
7,490.7	7,450.0	626.4	434.4	EOD; Inc=0°
10,410.7	10,370.0	626.4	434.4	TD at 10410.7
10,840.7	10,800.0	626.4	434.4	Permit TD @ 10800' TVD