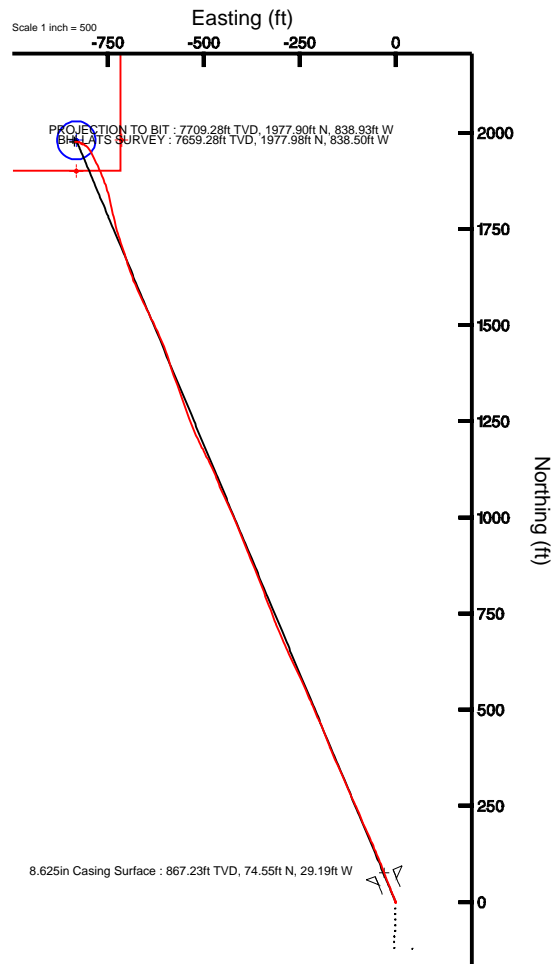
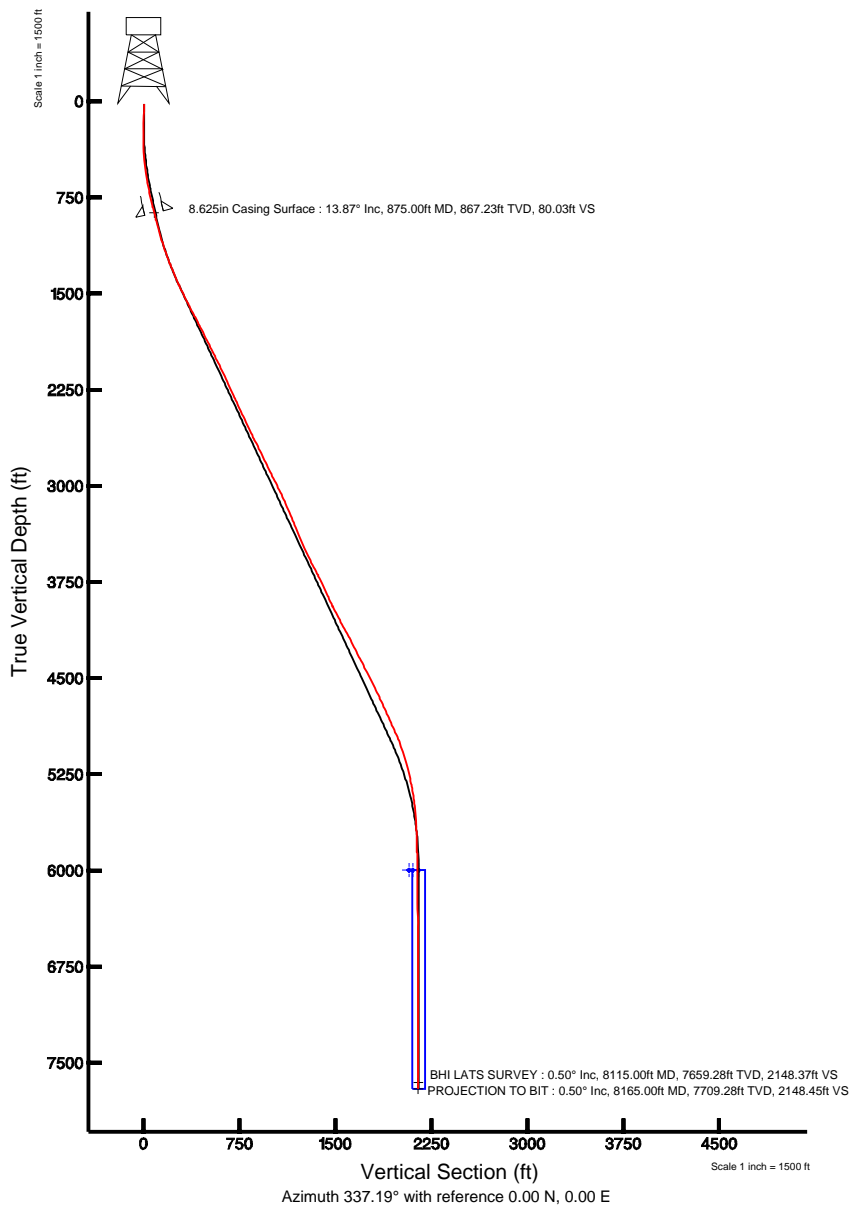


KERR MCGEE OIL & GAS ONSHORE LP

Location: COLORADO Slot: SLOT#08 RASMUSSEN 25-29 (787'FSL & 1961'FEL)
 Field: WELD COUNTY (KERR MCGEE) Well: RASMUSSEN 25-29
 Facility: SEC.29-T2N-R68W Wellbore: RASMUSSEN 25-29 PWB

Plot reference wellpath is RASMUSSEN 25-29 (REV-A.0) PWB	
True vertical depths are referenced to XTREME 12 (RT)	Grid System: NAD83 / Lambert Colorado State Planes, Northern Zone (501), US feet
Measured depths are referenced to XTREME 12 (RT)	North Reference: True north
XTREME 12 (RT) to Mean Sea Level: 4949 feet	Scale: True distance
Mean Sea Level to Mud line (Facility: SEC.29-T2N-R68W): 0 feet	Depths are in feet
Coordinates are in feet referenced to Slot	Created by: wagnjam on 7/19/2010



N
TRUE
W E
MAG

BGGM (1945.0 to 2011.0) Dip: 66.83° Field: 53123.1 nT
 Magnetic North is 9.09 degrees East of True North (at 5/4/2010)

To correct azimuth from Magnetic to True add 9.09 degrees
 For example: if the Magnetic North Azimuth = 90 degs, then the Grid North Azimuth = 90 + 9.09 = 99.09



Actual Wellpath Report

Rasmussen 25-29 AWB_awp

Page 1 of 5



REFERENCE WELLPATH IDENTIFICATION

Operator	KERR MCGEE OIL & GAS ONSHORE LP	Slot	SLOT#08 RASMUSSEN 25-29 (787'FSL & 1961'FEL)
Area	COLORADO	Well	RASMUSSEN 25-29
Field	WELD COUNTY (KERR MCGEE)	Wellbore	Rasmussen 25-29 AWB
Facility	SEC.29-T2N-R68W		

REPORT SETUP INFORMATION

Projection System	NAD83 / Lambert Colorado State Planes, Northern Zone (501), US feet	Software System	WellArchitect® 2.0
North Reference	True	User	Wagnjam
Scale	0.99996	Report Generated	7/19/2010 at 3:47:19 PM
Convergence at slot	0.31° East	Database/Source file	WA_Denver/Rasmussen_25-29_AWB.xml

WELLPATH LOCATION

	Local coordinates		Grid coordinates		Geographic coordinates	
	North[ft]	East[ft]	Easting[USft]	Northing[USft]	Latitude	Longitude
Slot Location	-3792.26	1440.64	3132946.75	1281266.31	40°06'16.164"N	105°01'28.992"W
Facility Reference Pt			3131486.09	1285050.71	40°06'53.640"N	105°01'47.532"W
Field Reference Pt			3197771.84	1268891.29	40°04'09.600"N	104°47'36.000"W

WELLPATH DATUM

Calculation method	Minimum curvature	XTREME 12 (RT) to Facility Vertical Datum	4949.00ft
Horizontal Reference Pt	Slot	XTREME 12 (RT) to Mean Sea Level	4949.00ft
Vertical Reference Pt	XTREME 12 (RT)	Facility Vertical Datum to Mud Line (Facility)	0.00ft
MD Reference Pt	XTREME 12 (RT)	Section Origin	N 0.00, E 0.00 ft
Field Vertical Reference	Mean Sea Level	Section Azimuth	337.19°



Actual Wellpath Report

Rasmussen 25-29 AWB_awp

Page 2 of 5



REFERENCE WELLPATH IDENTIFICATION

Operator	KERR MCGEE OIL & GAS ONSHORE LP	Slot	SLOT#08 RASMUSSEN 25-29 (787'FSL & 1961'FEL)
Area	COLORADO	Well	RASMUSSEN 25-29
Field	WELD COUNTY (KERR MCGEE)	Wellbore	Rasmussen 25-29 AWB
Facility	SEC.29-T2N-R68W		

WELLPATH DATA (86 stations) † = interpolated/extrapolated station

MD [ft]	Inclination [°]	Azimuth [°]	TVD [ft]	Vert Sect [ft]	North [ft]	East [ft]	DLS [°/100ft]	Comments
0.00†	0.000	164.500	0.00	0.00	0.00	0.00	0.00	
15.00	0.000	164.500	15.00	0.00	0.00	0.00	0.00	
153.00	2.100	164.500	152.97	-2.51	-2.44	0.68	1.52	
246.00	1.000	166.600	245.93	-5.00	-4.87	1.32	1.18	
356.00	2.800	342.800	355.90	-3.27	-3.23	0.75	3.45	
446.00	5.200	342.100	445.67	2.98	2.75	-1.16	2.67	
535.00	7.700	338.500	534.10	12.96	12.13	-4.58	2.84	
625.00	9.800	337.500	623.05	26.65	24.82	-9.72	2.34	
714.00	12.100	339.200	710.43	43.55	40.54	-15.94	2.61	
829.00	13.600	338.500	822.54	69.11	64.39	-25.17	1.31	
930.00	14.200	338.200	920.58	93.37	86.94	-34.12	0.60	
1020.00	16.200	338.200	1007.43	116.96	108.85	-42.89	2.22	
1110.00	17.800	337.100	1093.50	143.27	133.18	-52.90	1.81	
1200.00	19.800	336.400	1178.69	172.27	159.82	-64.36	2.24	
1291.00	21.200	335.400	1263.93	204.13	188.91	-77.38	1.59	
1381.00	23.000	337.100	1347.31	237.98	219.90	-91.00	2.12	
1470.00	24.800	335.400	1428.68	274.03	252.90	-105.54	2.17	
1561.00	26.200	336.100	1510.81	313.20	288.62	-121.62	1.57	
1651.00	27.300	336.400	1591.18	353.70	325.70	-137.93	1.23	
1740.00	27.500	336.100	1670.19	394.65	363.18	-154.43	0.27	
1830.00	27.300	337.100	1750.10	436.06	401.19	-170.88	0.56	
1920.00	26.900	338.900	1830.22	477.05	439.20	-186.24	1.01	
2010.00	26.400	336.100	1910.66	517.41	476.49	-201.67	1.50	
2100.00	26.800	336.800	1991.13	557.71	513.43	-217.77	0.56	
2190.00	26.300	336.100	2071.64	597.93	550.31	-233.84	0.66	
2280.00	25.100	334.300	2152.74	636.93	585.74	-250.20	1.59	
2369.00	24.800	335.000	2233.43	674.44	619.67	-266.28	0.47	
2458.00	24.400	335.700	2314.35	711.47	653.34	-281.73	0.56	
2547.00	25.100	337.100	2395.18	748.72	687.48	-296.64	1.03	
2638.00	24.900	336.800	2477.65	787.18	722.87	-311.70	0.26	
2728.00	26.100	339.900	2558.89	825.90	758.88	-325.97	1.99	
2817.00	26.400	338.900	2638.71	865.24	795.73	-339.82	0.60	
2905.00	26.400	339.200	2717.53	904.34	832.27	-353.81	0.15	
2996.00	25.800	337.100	2799.25	944.37	869.42	-368.70	1.21	
3085.00	26.200	337.500	2879.25	983.38	905.42	-383.75	0.49	
3176.00	26.900	338.200	2960.65	1024.05	943.09	-399.09	0.84	
3264.00	26.200	337.500	3039.37	1063.38	979.52	-413.91	0.87	
3354.00	24.100	335.200	3120.84	1101.62	1014.56	-429.23	2.57	
3445.00	23.400	335.100	3204.13	1138.25	1047.82	-444.63	0.77	
3535.00	22.200	338.500	3287.10	1173.11	1079.85	-458.38	1.98	
3625.00	22.200	337.500	3370.43	1207.11	1111.38	-471.12	0.42	
3715.00	24.000	333.300	3453.21	1242.38	1143.44	-485.86	2.71	
3805.00	25.700	332.900	3534.88	1280.10	1177.17	-502.97	1.90	
3896.00	27.000	335.400	3616.42	1320.43	1213.52	-520.56	1.88	
3987.00	27.700	339.200	3697.26	1362.21	1252.08	-536.67	2.07	



Actual Wellpath Report

Rasmussen 25-29 AWB_awp

Page 3 of 5



REFERENCE WELLPATH IDENTIFICATION			
Operator	KERR MCGEE OIL & GAS ONSHORE LP	Slot	SLOT#08 RASMUSSEN 25-29 (787'FSL & 1961'FEL)
Area	COLORADO	Well	RASMUSSEN 25-29
Field	WELD COUNTY (KERR MCGEE)	Wellbore	Rasmussen 25-29 AWB
Facility	SEC.29-T2N-R68W		

WELLPATH DATA (86 stations)								
MD [ft]	Inclination [°]	Azimuth [°]	TVD [ft]	Vert Sect [ft]	North [ft]	East [ft]	DLS [°/100ft]	Comments
4077.00	25.200	340.900	3777.83	1402.25	1289.74	-550.37	2.90	
4166.00	23.800	341.000	3858.82	1439.07	1324.63	-562.42	1.57	
4256.00	27.100	338.900	3940.07	1477.69	1360.93	-575.71	3.80	
4346.00	27.800	343.100	4019.95	1519.06	1400.14	-589.20	2.29	
4435.00	28.900	338.900	4098.28	1561.21	1440.07	-602.97	2.56	
4526.00	27.900	335.000	4178.33	1604.47	1479.89	-619.89	2.32	
4615.00	26.500	334.300	4257.49	1645.11	1516.65	-637.30	1.61	
4705.00	27.400	333.600	4337.71	1685.83	1553.30	-655.22	1.06	
4795.00	27.300	335.400	4417.66	1727.13	1590.61	-673.02	0.93	
4885.00	27.300	339.900	4497.64	1768.38	1628.76	-688.70	2.29	
4975.00	26.400	342.400	4577.94	1808.93	1667.22	-701.85	1.60	
5065.00	24.700	341.700	4659.13	1847.60	1704.15	-713.80	1.92	
5154.00	24.800	343.500	4739.96	1884.69	1739.70	-724.94	0.85	
5243.00	24.800	347.000	4820.76	1921.64	1775.79	-734.44	1.65	
5334.00	24.700	347.700	4903.40	1959.14	1812.96	-742.79	0.34	
5424.00	22.200	343.900	4985.96	1994.52	1847.67	-751.51	3.25	
5515.00	18.200	338.200	5071.36	2025.82	1877.40	-761.56	4.89	
5605.00	16.200	336.800	5157.33	2052.43	1901.99	-771.72	2.27	
5695.00	12.800	334.300	5244.45	2074.95	1922.52	-781.00	3.84	
5785.00	11.500	334.300	5332.43	2093.86	1939.59	-789.21	1.44	
5874.00	9.100	327.800	5419.99	2109.67	1953.54	-796.81	2.99	
5964.00	7.100	316.000	5509.10	2121.88	1963.57	-804.47	2.88	
6055.00	3.800	298.100	5599.68	2129.47	1969.04	-811.04	4.04	
6144.00	3.000	296.700	5688.52	2133.53	1971.47	-815.72	0.90	
6234.00	2.200	296.400	5778.43	2136.63	1973.30	-819.37	0.89	
6324.00	1.300	299.900	5868.39	2138.75	1974.58	-821.80	1.01	
6415.00	1.200	290.000	5959.36	2140.22	1975.42	-823.59	0.26	
6550.00	0.900	296.700	6094.34	2141.98	1976.38	-825.87	0.24	
6685.00	0.500	294.200	6229.33	2143.22	1977.09	-827.35	0.30	
6820.00	0.400	279.500	6364.33	2143.90	1977.41	-828.36	0.11	
6956.00	0.600	281.200	6500.32	2144.56	1977.63	-829.52	0.15	
7091.00	0.300	286.900	6635.32	2145.18	1977.87	-830.55	0.22	
7226.00	0.500	261.500	6770.31	2145.55	1977.89	-831.47	0.19	
7362.00	0.200	278.100	6906.31	2145.82	1977.83	-832.30	0.23	
7497.00	0.400	249.600	7041.31	2145.96	1977.70	-832.97	0.18	
7633.00	0.700	277.400	7177.30	2146.40	1977.64	-834.24	0.29	
7768.00	0.500	295.300	7312.30	2147.25	1978.00	-835.59	0.20	
7897.00	0.400	268.600	7441.29	2147.83	1978.23	-836.55	0.18	
8033.00	0.600	261.900	7577.29	2148.19	1978.12	-837.73	0.15	
8115.00	0.500	258.400	7659.28	2148.37	1977.98	-838.50	0.13	BHI LATS SURVEY
8165.00	0.500	258.400	7709.28	2148.45	1977.90	-838.93	0.00	PROJECTION TO BIT



Actual Wellpath Report

Rasmussen 25-29 AWB_awp

Page 4 of 5



INTEQ

REFERENCE WELLPATH IDENTIFICATION			
Operator	KERR MCGEE OIL & GAS ONSHORE LP	Slot	SLOT#08 RASMUSSEN 25-29 (787'FSL & 1961'FEL)
Area	COLORADO	Well	RASMUSSEN 25-29
Field	WELD COUNTY (KERR MCGEE)	Wellbore	Rasmussen 25-29 AWB
Facility	SEC.29-T2N-R68W		

HOLE & CASING SECTIONS Ref Wellbore: Rasmussen 25-29 AWB Ref Wellpath: Rasmussen 25-29 AWB_awp									
String/Diameter	Start MD [ft]	End MD [ft]	Interval [ft]	Start TVD [ft]	End TVD [ft]	Start N/S [ft]	Start E/W [ft]	End N/S [ft]	End E/W [ft]
12.25in Open Hole	15.00	885.00	870.00	15.00	876.93	0.00	0.00	76.78	-30.07
8.625in Casing Surface	15.00	875.00	860.00	15.00	867.23	0.00	0.00	74.55	-29.19
7.875in Open Hole	875.00	8165.00	7290.00	867.23	7709.28	74.55	-29.19	1977.90	-838.93

TARGETS									
Name	MD [ft]	TVD [ft]	North [ft]	East [ft]	Grid East [srv ft]	Grid North [srv ft]	Latitude	Longitude	Shape
RASMUSSEN 25-29 118'E OF GEO TARGET		6000.00	1981.77	-715.55	3132220.62	1283244.13	40°06'35.748"N	105°01'38.201"W	point
RASMUSSEN 25-29 80'S OF GEO TARGET		6000.00	1901.77	-833.55	3132103.06	1283163.50	40°06'34.957"N	105°01'39.720"W	point
RASMUSSEN 25-29 GEO TARGET 50' RADIUS (2530'FNL & 2550'FWL, REV-1)		6000.00	1981.77	-833.55	3132102.63	1283243.50	40°06'35.748"N	105°01'39.720"W	circle

WELLPATH COMPOSITION Ref Wellbore: Rasmussen 25-29 AWB Ref Wellpath: Rasmussen 25-29 AWB_awp				
Start MD [ft]	End MD [ft]	Positional Uncertainty Model	Log Name/Comment	Wellbore
15.00	829.00	NaviTrak (Standard)	BHI MWD NAVI 12.25 HOLE <153-829>	Rasmussen 25-29 AWB
829.00	8115.00	NaviTrak (Standard)	BHI MWD NAVI 7.875 HOLE <930-8115>	Rasmussen 25-29 AWB
8115.00	8165.00	Blind Drilling (std)	Projection to bit	Rasmussen 25-29 AWB



Actual Wellpath Report

Rasmussen 25-29 AWB_awp

Page 5 of 5



INTEQ

REFERENCE WELLPATH IDENTIFICATION

Operator	KERR MCGEE OIL & GAS ONSHORE LP	Slot	SLOT#08 RASMUSSEN 25-29 (787'FSL & 1961'FEL)
Area	COLORADO	Well	RASMUSSEN 25-29
Field	WELD COUNTY (KERR MCGEE)	Wellbore	Rasmussen 25-29 AWB
Facility	SEC.29-T2N-R68W		

WELLPATH COMMENTS

MD [ft]	Inclination [°]	Azimuth [°]	TVD [ft]	Comment
8115.00	0.500	258.400	7659.28	BHI LATS SURVEY
8165.00	0.500	258.400	7709.28	PROJECTION TO BIT