

Three Forks Resources

Three Forks Resources, LLC

CO 7-24

CO-24

CO 7-24

Plan: CO 7-24 (wp02)

Standard Planning Report

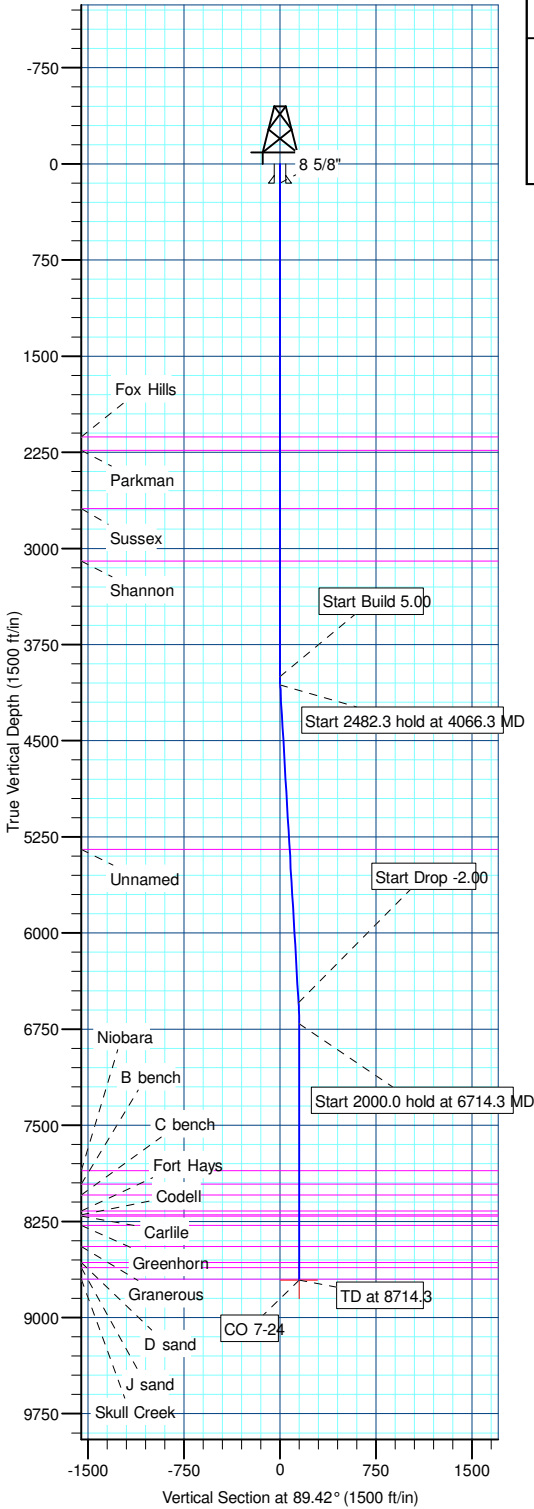
01 October, 2010

Project: Three Forks Resources, LLC
 Site: CO 7-24
 Well: CO-24
 Wellbore: CO 7-24
 Section:
 SHL:
 Design: CO 7-24 (wp02)
 Latitude: 39° 36' 14.155 N
 Longitude: 104° 36' 40.446 W
 GL: 5947.0
 KB: 16' KB + 5931' GL @ 5947.0ft

CASING DETAILS			
TVD	MD	Name	Size
150.0	150.0	8 5/8"	8-5/8



Azimuths to Grid North
 True North: -0.57°
 Magnetic North: 8.20°
 Magnetic Field
 Strength: 52767.8snT
 Dip Angle: 66.47°
 Date: 9/30/2010
 Model: BGGM2010

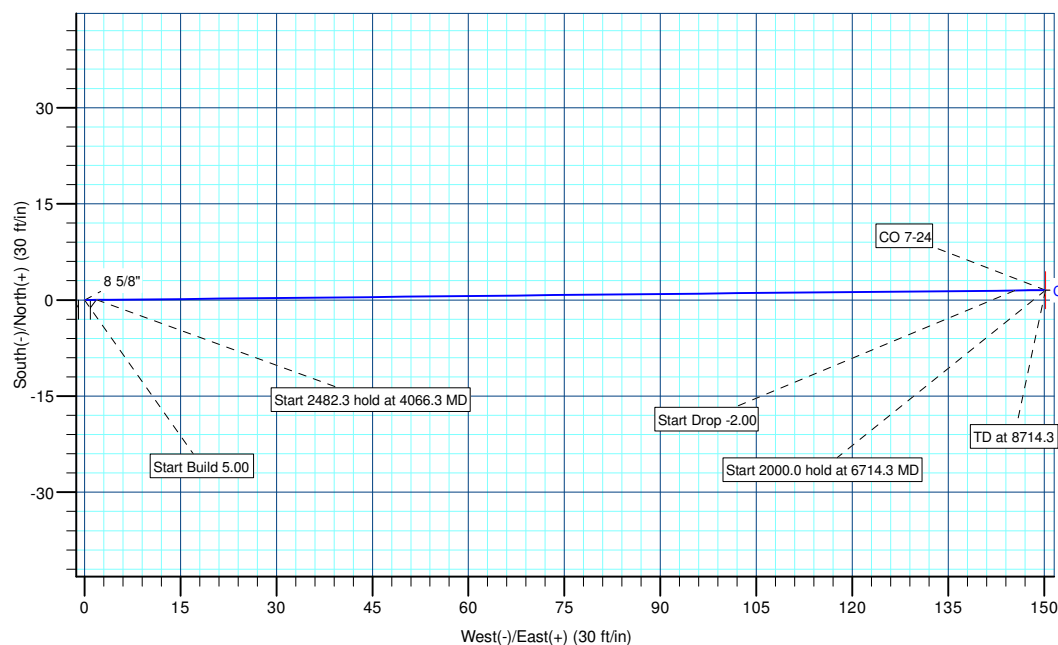


SECTION DETAILS									
MD	Inc	Azi	TVD	+N/-S	+E/-W	DLeg	TFace	VSec	Annotation
0.0	0.00	0.00	0.0	0.0	0.0	0.00	0.00	0.0	
4000.0	0.00	0.00	4000.0	0.0	0.0	0.00	0.00	0.0	Start Build 5.00
4066.3	3.31	89.42	4066.2	0.0	1.9	5.00	89.42	1.9	Start 2482.3 hold at 4066.3 MD
6548.6	3.31	89.42	6544.4	1.5	145.4	0.00	0.00	145.4	Start Drop -2.00
6714.3	0.00	0.00	6710.0	1.5	150.2	2.00	180.00	150.2	Start 2000.0 hold at 6714.3 MD
8714.3	0.00	0.00	8710.0	1.5	150.2	0.00	0.00	150.2	TD at 8714.3

WELLBORE TARGET DETAILS (MAP CO-ORDINATES AND LAT/LONG)						
Name	TVD	+N/-S	+E/-W	Latitude	Longitude	Shape
CO 7-24	8710.0	1.5	150.2	39° 36' 14.155 N	104° 36' 38.527 W	Point

WELL DETAILS: CO-24						
+N/-S	+E/-W	Northing	Ground Level: Easting	5947.0 Latitude	Longitude	Slot
0.0	0.0	1099826.25	3250432.55	39° 36' 14.155 N	104° 36' 40.446 W	

FORMATION TOP DETAILS		
TVDPath	MDPath	Formation
2130.0	2130.0	Fox Hills
2235.0	2235.0	Parkman
2690.0	2690.0	Sussex
3100.0	3100.0	Shannon
5350.0	5352.2	Unnamed
7855.0	7859.3	Niobara
7960.0	7964.3	B bench
8045.0	8049.3	C bench
8170.0	8174.3	Fort Hays
8200.0	8204.3	Codell
8210.0	8214.3	Carlile
8280.0	8284.3	Greenhorn
8445.0	8449.3	Granerous
8570.0	8574.3	D sand
8610.0	8614.3	J sand
8700.0	8704.3	Skull Creek



Plan: CO 7-24 (wp02) (CO-24/CO 7-24)

Created By: Jason Daguitera Date: 9:29, October 01 2010

Weatherford International Ltd.

Planning Report

Database:	EDM 2003.21 Single User Db	Local Co-ordinate Reference:	Well CO-24
Company:	Three Forks Resources	TVD Reference:	16' KB + 5931' GL @ 5947.0ft
Project:	Three Forks Resources, LLC	MD Reference:	16' KB + 5931' GL @ 5947.0ft
Site:	CO 7-24	North Reference:	Grid
Well:	CO-24	Survey Calculation Method:	Minimum Curvature
Wellbore:	CO 7-24		
Design:	CO 7-24 (wp02)		

Project	Three Forks Resources, LLC		
Map System:	US State Plane 1983	System Datum:	Mean Sea Level
Geo Datum:	North American Datum 1983		
Map Zone:	Colorado Northern Zone		

Site		CO 7-24			
Site Position:		Northing:	1,099,826.26ft	Latitude:	39° 36' 14.155 N
From:	Lat/Long	Easting:	3,250,432.55ft	Longitude:	104° 36' 40.446 W
Position Uncertainty:	0.0 ft	Slot Radius:	"	Grid Convergence:	0.57 °

Well	CO-24					
Well Position	+N/-S	0.0 ft	Northing:	1,099,826.25 ft	Latitude:	39° 36' 14.155 N
	+E/-W	0.0 ft	Easting:	3,250,432.55 ft	Longitude:	104° 36' 40.446 W
Position Uncertainty		0.0 ft	Wellhead Elevation:	ft	Ground Level:	5,947.0ft

Wellbore	CO 7-24				
Magnetics	Model Name	Sample Date	Declination (°)	Dip Angle (°)	Field Strength (nT)
	BGGM2010	9/30/2010	8.78	66.47	52,768

Design	CO 7-24 (wp02)			
Audit Notes:				
Version:	Phase:	PLAN	Tie On Depth:	0.0
Vertical Section:	Depth From (TVD) (ft)	+N/-S (ft)	+E/-W (ft)	Direction (°)
	0.0	0.0	0.0	89.42

Plan Sections										
Measured Depth (ft)	Inclination (°)	Azimuth (°)	Vertical Depth (ft)	+N/-S (ft)	+E/-W (ft)	Dogleg Rate (°/100ft)	Build Rate (°/100ft)	Turn Rate (°/100ft)	TFO (°)	Target
0.0	0.00	0.00	0.0	0.0	0.0	0.00	0.00	0.00	0.00	
4,000.0	0.00	0.00	4,000.0	0.0	0.0	0.00	0.00	0.00	0.00	
4,066.3	3.31	89.42	4,066.2	0.0	1.9	5.00	5.00	0.00	89.42	
6,548.6	3.31	89.42	6,544.4	1.5	145.4	0.00	0.00	0.00	0.00	
6,714.3	0.00	0.00	6,710.0	1.5	150.2	2.00	-2.00	0.00	180.00	
8,714.3	0.00	0.00	8,710.0	1.5	150.2	0.00	0.00	0.00	0.00	CO 7-24

Weatherford International Ltd.

Planning Report

Database:	EDM 2003.21 Single User Db	Local Co-ordinate Reference:	Well CO-24
Company:	Three Forks Resources	TVD Reference:	16' KB + 5931' GL @ 5947.0ft
Project:	Three Forks Resources, LLC	MD Reference:	16' KB + 5931' GL @ 5947.0ft
Site:	CO 7-24	North Reference:	Grid
Well:	CO-24	Survey Calculation Method:	Minimum Curvature
Wellbore:	CO 7-24		
Design:	CO 7-24 (wp02)		

Planned Survey									
Measured Depth (ft)	Inclination (°)	Azimuth (°)	Vertical Depth (ft)	+N/-S (ft)	+E/-W (ft)	Vertical Section (ft)	Dogleg Rate (°/100ft)	Build Rate (°/100ft)	Turn Rate (°/100ft)
0.0	0.00	0.00	0.0	0.0	0.0	0.0	0.00	0.00	0.00
100.0	0.00	0.00	100.0	0.0	0.0	0.0	0.00	0.00	0.00
8 5/8"									
150.0	0.00	0.00	150.0	0.0	0.0	0.0	0.00	0.00	0.00
200.0	0.00	0.00	200.0	0.0	0.0	0.0	0.00	0.00	0.00
300.0	0.00	0.00	300.0	0.0	0.0	0.0	0.00	0.00	0.00
400.0	0.00	0.00	400.0	0.0	0.0	0.0	0.00	0.00	0.00
500.0	0.00	0.00	500.0	0.0	0.0	0.0	0.00	0.00	0.00
600.0	0.00	0.00	600.0	0.0	0.0	0.0	0.00	0.00	0.00
700.0	0.00	0.00	700.0	0.0	0.0	0.0	0.00	0.00	0.00
800.0	0.00	0.00	800.0	0.0	0.0	0.0	0.00	0.00	0.00
900.0	0.00	0.00	900.0	0.0	0.0	0.0	0.00	0.00	0.00
1,000.0	0.00	0.00	1,000.0	0.0	0.0	0.0	0.00	0.00	0.00
1,100.0	0.00	0.00	1,100.0	0.0	0.0	0.0	0.00	0.00	0.00
1,200.0	0.00	0.00	1,200.0	0.0	0.0	0.0	0.00	0.00	0.00
1,300.0	0.00	0.00	1,300.0	0.0	0.0	0.0	0.00	0.00	0.00
1,400.0	0.00	0.00	1,400.0	0.0	0.0	0.0	0.00	0.00	0.00
1,500.0	0.00	0.00	1,500.0	0.0	0.0	0.0	0.00	0.00	0.00
1,600.0	0.00	0.00	1,600.0	0.0	0.0	0.0	0.00	0.00	0.00
1,700.0	0.00	0.00	1,700.0	0.0	0.0	0.0	0.00	0.00	0.00
1,800.0	0.00	0.00	1,800.0	0.0	0.0	0.0	0.00	0.00	0.00
1,900.0	0.00	0.00	1,900.0	0.0	0.0	0.0	0.00	0.00	0.00
2,000.0	0.00	0.00	2,000.0	0.0	0.0	0.0	0.00	0.00	0.00
2,100.0	0.00	0.00	2,100.0	0.0	0.0	0.0	0.00	0.00	0.00
Fox Hills									
2,130.0	0.00	0.00	2,130.0	0.0	0.0	0.0	0.00	0.00	0.00
2,200.0	0.00	0.00	2,200.0	0.0	0.0	0.0	0.00	0.00	0.00
Parkman									
2,235.0	0.00	0.00	2,235.0	0.0	0.0	0.0	0.00	0.00	0.00
2,300.0	0.00	0.00	2,300.0	0.0	0.0	0.0	0.00	0.00	0.00
2,400.0	0.00	0.00	2,400.0	0.0	0.0	0.0	0.00	0.00	0.00
2,500.0	0.00	0.00	2,500.0	0.0	0.0	0.0	0.00	0.00	0.00
2,600.0	0.00	0.00	2,600.0	0.0	0.0	0.0	0.00	0.00	0.00
Sussex									
2,690.0	0.00	0.00	2,690.0	0.0	0.0	0.0	0.00	0.00	0.00
2,700.0	0.00	0.00	2,700.0	0.0	0.0	0.0	0.00	0.00	0.00
2,800.0	0.00	0.00	2,800.0	0.0	0.0	0.0	0.00	0.00	0.00
2,900.0	0.00	0.00	2,900.0	0.0	0.0	0.0	0.00	0.00	0.00
3,000.0	0.00	0.00	3,000.0	0.0	0.0	0.0	0.00	0.00	0.00
Shannon									
3,100.0	0.00	0.00	3,100.0	0.0	0.0	0.0	0.00	0.00	0.00
3,200.0	0.00	0.00	3,200.0	0.0	0.0	0.0	0.00	0.00	0.00
3,300.0	0.00	0.00	3,300.0	0.0	0.0	0.0	0.00	0.00	0.00
3,400.0	0.00	0.00	3,400.0	0.0	0.0	0.0	0.00	0.00	0.00
3,500.0	0.00	0.00	3,500.0	0.0	0.0	0.0	0.00	0.00	0.00
3,600.0	0.00	0.00	3,600.0	0.0	0.0	0.0	0.00	0.00	0.00
3,700.0	0.00	0.00	3,700.0	0.0	0.0	0.0	0.00	0.00	0.00
3,800.0	0.00	0.00	3,800.0	0.0	0.0	0.0	0.00	0.00	0.00
3,900.0	0.00	0.00	3,900.0	0.0	0.0	0.0	0.00	0.00	0.00
Start Build 5.00									
4,000.0	0.00	0.00	4,000.0	0.0	0.0	0.0	0.00	0.00	0.00
Start 2482.3 hold at 4066.3 MD									
4,066.3	3.31	89.42	4,066.2	0.0	1.9	1.9	5.00	5.00	0.00

Weatherford International Ltd.

Planning Report

Database:	EDM 2003.21 Single User Db	Local Co-ordinate Reference:	Well CO-24
Company:	Three Forks Resources	TVD Reference:	16' KB + 5931' GL @ 5947.0ft
Project:	Three Forks Resources, LLC	MD Reference:	16' KB + 5931' GL @ 5947.0ft
Site:	CO 7-24	North Reference:	Grid
Well:	CO-24	Survey Calculation Method:	Minimum Curvature
Wellbore:	CO 7-24		
Design:	CO 7-24 (wp02)		

Planned Survey									
Measured Depth (ft)	Inclination (°)	Azimuth (°)	Vertical Depth (ft)	+N/-S (ft)	+E/-W (ft)	Vertical Section (ft)	Dogleg Rate (°/100ft)	Build Rate (°/100ft)	Turn Rate (°/100ft)
4,100.0	3.31	89.42	4,099.9	0.0	3.9	3.9	0.00	0.00	0.00
4,200.0	3.31	89.42	4,199.7	0.1	9.6	9.6	0.00	0.00	0.00
4,300.0	3.31	89.42	4,299.6	0.2	15.4	15.4	0.00	0.00	0.00
4,400.0	3.31	89.42	4,399.4	0.2	21.2	21.2	0.00	0.00	0.00
4,500.0	3.31	89.42	4,499.2	0.3	27.0	27.0	0.00	0.00	0.00
4,600.0	3.31	89.42	4,599.1	0.3	32.8	32.8	0.00	0.00	0.00
4,700.0	3.31	89.42	4,698.9	0.4	38.5	38.5	0.00	0.00	0.00
4,800.0	3.31	89.42	4,798.7	0.4	44.3	44.3	0.00	0.00	0.00
4,900.0	3.31	89.42	4,898.6	0.5	50.1	50.1	0.00	0.00	0.00
5,000.0	3.31	89.42	4,998.4	0.6	55.9	55.9	0.00	0.00	0.00
5,100.0	3.31	89.42	5,098.2	0.6	61.7	61.7	0.00	0.00	0.00
5,200.0	3.31	89.42	5,198.1	0.7	67.4	67.4	0.00	0.00	0.00
5,300.0	3.31	89.42	5,297.9	0.7	73.2	73.2	0.00	0.00	0.00
Unnamed									
5,352.2	3.31	89.42	5,350.0	0.8	76.2	76.2	0.00	0.00	0.00
5,400.0	3.31	89.42	5,397.7	0.8	79.0	79.0	0.00	0.00	0.00
5,500.0	3.31	89.42	5,497.6	0.9	84.8	84.8	0.00	0.00	0.00
5,600.0	3.31	89.42	5,597.4	0.9	90.6	90.6	0.00	0.00	0.00
5,700.0	3.31	89.42	5,697.2	1.0	96.3	96.3	0.00	0.00	0.00
5,800.0	3.31	89.42	5,797.1	1.0	102.1	102.1	0.00	0.00	0.00
5,900.0	3.31	89.42	5,896.9	1.1	107.9	107.9	0.00	0.00	0.00
6,000.0	3.31	89.42	5,996.7	1.1	113.7	113.7	0.00	0.00	0.00
6,100.0	3.31	89.42	6,096.6	1.2	119.5	119.5	0.00	0.00	0.00
6,200.0	3.31	89.42	6,196.4	1.3	125.2	125.2	0.00	0.00	0.00
6,300.0	3.31	89.42	6,296.2	1.3	131.0	131.0	0.00	0.00	0.00
6,400.0	3.31	89.42	6,396.1	1.4	136.8	136.8	0.00	0.00	0.00
6,500.0	3.31	89.42	6,495.9	1.4	142.6	142.6	0.00	0.00	0.00
Start Drop -2.00									
6,548.6	3.31	89.42	6,544.4	1.5	145.4	145.4	0.00	0.00	0.00
6,600.0	2.29	89.42	6,595.8	1.5	147.9	147.9	2.00	-2.00	0.00
6,700.0	0.29	89.42	6,695.7	1.5	150.1	150.2	2.00	-2.00	0.00
Start 2000.0 hold at 6714.3 MD									
6,714.3	0.00	0.00	6,710.0	1.5	150.2	150.2	2.00	-2.00	0.00
6,800.0	0.00	0.00	6,795.7	1.5	150.2	150.2	0.00	0.00	0.00
6,900.0	0.00	0.00	6,895.7	1.5	150.2	150.2	0.00	0.00	0.00
7,000.0	0.00	0.00	6,995.7	1.5	150.2	150.2	0.00	0.00	0.00
7,100.0	0.00	0.00	7,095.7	1.5	150.2	150.2	0.00	0.00	0.00
7,200.0	0.00	0.00	7,195.7	1.5	150.2	150.2	0.00	0.00	0.00
7,300.0	0.00	0.00	7,295.7	1.5	150.2	150.2	0.00	0.00	0.00
7,400.0	0.00	0.00	7,395.7	1.5	150.2	150.2	0.00	0.00	0.00
7,500.0	0.00	0.00	7,495.7	1.5	150.2	150.2	0.00	0.00	0.00
7,600.0	0.00	0.00	7,595.7	1.5	150.2	150.2	0.00	0.00	0.00
7,700.0	0.00	0.00	7,695.7	1.5	150.2	150.2	0.00	0.00	0.00
7,800.0	0.00	0.00	7,795.7	1.5	150.2	150.2	0.00	0.00	0.00
Niobara									
7,859.3	0.00	0.00	7,855.0	1.5	150.2	150.2	0.00	0.00	0.00
7,900.0	0.00	0.00	7,895.7	1.5	150.2	150.2	0.00	0.00	0.00
B bench									
7,964.3	0.00	0.00	7,960.0	1.5	150.2	150.2	0.00	0.00	0.00
8,000.0	0.00	0.00	7,995.7	1.5	150.2	150.2	0.00	0.00	0.00
C bench									
8,049.3	0.00	0.00	8,045.0	1.5	150.2	150.2	0.00	0.00	0.00
8,100.0	0.00	0.00	8,095.7	1.5	150.2	150.2	0.00	0.00	0.00

Weatherford International Ltd.

Planning Report

Database:	EDM 2003.21 Single User Db	Local Co-ordinate Reference:	Well CO-24
Company:	Three Forks Resources	TVD Reference:	16' KB + 5931' GL @ 5947.0ft
Project:	Three Forks Resources, LLC	MD Reference:	16' KB + 5931' GL @ 5947.0ft
Site:	CO 7-24	North Reference:	Grid
Well:	CO-24	Survey Calculation Method:	Minimum Curvature
Wellbore:	CO 7-24		
Design:	CO 7-24 (wp02)		

Planned Survey										
Measured Depth (ft)	Inclination (°)	Azimuth (°)	Vertical Depth (ft)	+N/-S (ft)	+E/-W (ft)	Vertical Section (ft)	Dogleg Rate (°/100ft)	Build Rate (°/100ft)	Turn Rate (°/100ft)	
Fort Hays										
8,174.3	0.00	0.00	8,170.0	1.5	150.2	150.2	0.00	0.00	0.00	
8,200.0	0.00	0.00	8,195.7	1.5	150.2	150.2	0.00	0.00	0.00	
Codell										
8,204.3	0.00	0.00	8,200.0	1.5	150.2	150.2	0.00	0.00	0.00	
Carlile										
8,214.3	0.00	0.00	8,210.0	1.5	150.2	150.2	0.00	0.00	0.00	
Greenhorn										
8,284.3	0.00	0.00	8,280.0	1.5	150.2	150.2	0.00	0.00	0.00	
8,300.0	0.00	0.00	8,295.7	1.5	150.2	150.2	0.00	0.00	0.00	
8,400.0	0.00	0.00	8,395.7	1.5	150.2	150.2	0.00	0.00	0.00	
Grangerous										
8,449.3	0.00	0.00	8,445.0	1.5	150.2	150.2	0.00	0.00	0.00	
8,500.0	0.00	0.00	8,495.7	1.5	150.2	150.2	0.00	0.00	0.00	
D sand										
8,574.3	0.00	0.00	8,570.0	1.5	150.2	150.2	0.00	0.00	0.00	
8,600.0	0.00	0.00	8,595.7	1.5	150.2	150.2	0.00	0.00	0.00	
J sand										
8,614.3	0.00	0.00	8,610.0	1.5	150.2	150.2	0.00	0.00	0.00	
8,700.0	0.00	0.00	8,695.7	1.5	150.2	150.2	0.00	0.00	0.00	
Skull Creek										
8,704.3	0.00	0.00	8,700.0	1.5	150.2	150.2	0.00	0.00	0.00	
TD at 8714.3										
8,714.3	0.00	0.00	8,710.0	1.5	150.2	150.2	0.00	0.00	0.00	

Design Targets										
Target Name	Dip Angle (°)	Dip Dir. (°)	TVD (ft)	+N/-S (ft)	+E/-W (ft)	Northing (ft)	Easting (ft)	Latitude	Longitude	
- hit/miss target										
- Shape										
CO 7-24	0.00	0.01	8,710.0	1.5	150.2	1,099,827.77	3,250,582.73	39° 36' 14.155 N	104° 36' 38.527 W	
- plan hits target center										
- Point										
	150.0	150.0	8 5/8"					8-5/8	12-1/4	

Weatherford International Ltd.

Planning Report

Database:	EDM 2003.21 Single User Db	Local Co-ordinate Reference:	Well CO-24
Company:	Three Forks Resources	TVD Reference:	16' KB + 5931' GL @ 5947.0ft
Project:	Three Forks Resources, LLC	MD Reference:	16' KB + 5931' GL @ 5947.0ft
Site:	CO 7-24	North Reference:	Grid
Well:	CO-24	Survey Calculation Method:	Minimum Curvature
Wellbore:	CO 7-24		
Design:	CO 7-24 (wp02)		

Formations						
Measured Depth (ft)	Vertical Depth (ft)	Name	Lithology	Dip (°)	Dip Direction (°)	
8,174.3	8,170.0	Fort Hays		0.00		
2,690.0	2,690.0	Sussex		0.00		
8,204.3	8,200.0	Codell		0.00		
8,049.3	8,045.0	C bench		0.00		
3,100.0	3,100.0	Shannon		0.00		
7,964.3	7,960.0	B bench		0.00		
8,214.3	8,210.0	Carlile		0.00		
8,704.3	8,700.0	Skull Creek		0.00		
8,449.3	8,445.0	Graneros		0.00		
2,130.0	2,130.0	Fox Hills		0.00		
2,235.0	2,235.0	Parkman		0.00		
5,352.2	5,350.0	Unnamed		0.00		
8,614.3	8,610.0	J sand		0.00		
7,859.3	7,855.0	Niobara		0.00		
8,574.3	8,570.0	D sand		0.00		
8,284.3	8,280.0	Greenhorn		0.00		

Plan Annotations					
Measured Depth (ft)	Vertical Depth (ft)	Local Coordinates			
		+N/-S (ft)	+E/-W (ft)	Comment	
4,000.0	4,000.0	0.0	0.0	Start Build 5.00	
4,066.3	4,066.2	0.0	1.9	Start 2482.3 hold at 4066.3 MD	
6,548.6	6,544.4	1.5	145.4	Start Drop -2.00	
6,714.3	6,710.0	1.5	150.2	Start 2000.0 hold at 6714.3 MD	
8,714.3	8,710.0	1.5	150.2	TD at 8714.3	