
WILLIAMS PRODUCTION RMT INC EBUSINE

RWF 344-6

Garfield County , Colorado

Cement Surface Casing
12-Mar-2009

Job Site Documents

The Road to Excellence Starts with Safety

Sold To #: 300721	Ship To #: 2717753	Quote #:	Sales Order #: 6557020
Customer: WILLIAMS PRODUCTION RMT INC EBUSINE	Customer Rep: WILSON, W.C.		
Well Name: RWF	Well #: 344-6	API/UWI #: 05-045-13664	
Field:	City (SAP): RIFLE	County/Parish: Garfield	State: Colorado
Contractor: H&P 280	Rig/Platform Name/Num: H&P 280		
Job Purpose: Cement Surface Casing			
Well Type: Development Well	Job Type: Cement Surface Casing		
Sales Person: HARROLD, DALE	Srv Supervisor: MAGERS, MICHAEL	MBU ID Emp #: 339439	

Job Personnel

HES Emp Name	Exp Hrs	Emp #	HES Emp Name	Exp Hrs	Emp #	HES Emp Name	Exp Hrs	Emp #
MAGERS, MICHAEL Gerard	3	339439	MAYO, MARK Eaton	3	314204	SMILANICH, JOHN	3	458431
WHITE, GENE L	3	445480	WYMS, JUAN	3	456693			

Equipment

HES Unit #	Distance-1 way	HES Unit #	Distance-1 way	HES Unit #	Distance-1 way	HES Unit #	Distance-1 way
10638363	60 mile	10638378	60 mile	10744648C	60 mile	10998508	60 mile
11021972	60 mile	11027039	60 mile				

Job Hours

Date	On Location Hours	Operating Hours	Date	On Location Hours	Operating Hours	Date	On Location Hours	Operating Hours
03/12/2009	3	1						

TOTAL Total is the sum of each column separately

Job

Formation Name					Date/Time					
Formation Depth (MD)		Top	Bottom		Called Out	Date	Time	Time Zone		
Form Type		BHST			On Location	12 - Mar - 2009	10:00	MST		
Job depth MD		1085.5 ft		Job Depth TVD		1085.5 ft	Job Started	12 - Mar - 2009	11:42	MST
Water Depth		Wk Ht Above Floor			5. ft	Job Completed	12 - Mar - 2009	12:31	MST	
Perforation Depth (MD)		From	To		Departed Loc	12 - Mar - 2009	14:30	MST		

Well Data

Description	New / Used	Max pressure psig	Size in	ID in	Weight lbm/ft	Thread	Grade	Top MD ft	Bottom MD ft	Top TVD ft	Bottom TVD ft
-------------	------------	-------------------	---------	-------	---------------	--------	-------	-----------	--------------	------------	---------------

Sales/Rental/3rd Party (HES)

Description	Qty	Qty uom	Depth	Supplier
PLUG,CMTG,TOP,9 5/8,HWE,8.16 MIN/9.06 MA	1	EA		
PORT. DAS W/CEMWIN;ACQUIRE W/HES, ZI	1	JOB		
ADC (AUTO DENSITY CTRL) SYS, /JOB,ZI	1	JOB		

Tools and Accessories

Type	Size	Qty	Make	Depth	Type	Size	Qty	Make	Depth	Type	Size	Qty	Make
Guide Shoe					Packer					Top Plug	9.625	1	
Float Shoe					Bridge Plug					Bottom Plug			
Float Collar					Retainer					SSR plug set			
Insert Float										Plug Container	9.625	1	
Stage Tool										Centralizers			

Miscellaneous Materials

Gelling Agt	Conc	Surfactant	Conc	Acid Type	Qty	Conc	%
Treatment Fld	Conc	Inhibitor	Conc	Sand Type	Size	Qty	

Fluid Data									
Stage/Plug #: 1									
Fluid #	Stage Type	Fluid Name	Qty	Qty uom	Mixing Density lbm/gal	Yield ft ³ /sk	Mix Fluid Gal/sk	Rate bbl/min	Total Mix Fluid Gal/sk
1	Water Spacer		20.00	bbl	8.4	.0	.0	.0	
2	Lead Cement	VERSACEM (TM) SYSTEM (452010)	160.0	sacks	12.3	2.38	13.75		
	0.125 lbm	POLY-E-FLAKE (101216940)							
	0.25 %	D-AIR 3000 (101007446)							
	13.75 Gal	FRESH WATER							
3	Tail Cement	VERSACEM (TM) SYSTEM (452010)	160.0	sacks	12.8	2.11	11.75		
	5.64 lbm	SALT, 100 LB BAG (100003652)							
	11.75 Gal	FRESH WATER							
4	Displacement Fluid		79.00	bbl	8.4	.0	.0	.0	
Calculated Values		Pressures		Volumes					
Displacement	79.0	Shut In: Instant		Lost Returns	0	Cement Slurry	128	Pad	
Top Of Cement	Surface	5 Min		Cement Returns	29	Actual Displacement	79	Treatment	
Frac Gradient		15 Min		Spacers	20	Load and Breakdown		Total Job	227
Rates									
Circulating	Rig	Mixing	7	Displacement	10	Avg. Job	8		
Cement Left In Pipe	Amount	40.9 ft	Reason	Shoe Joint					
Frac Ring # 1 @	ID	Frac ring # 2 @	ID	Frac Ring # 3 @	ID	Frac Ring # 4 @	ID		
The Information Stated Herein Is Correct				Customer Representative Signature					

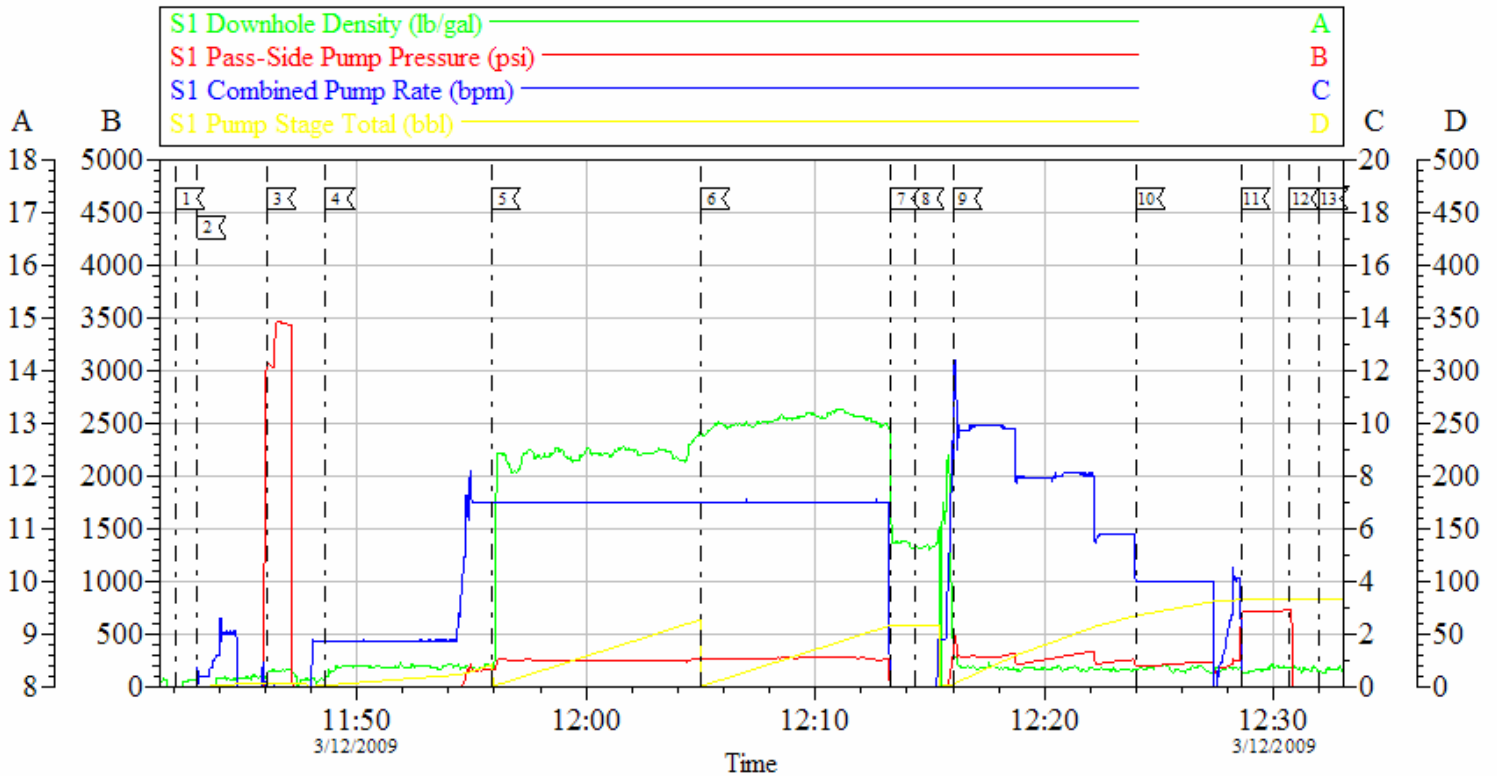
The Road to Excellence Starts with Safety

Sold To #: 300721	Ship To #: 2717753	Quote #:	Sales Order #: 6557020
Customer: WILLIAMS PRODUCTION RMT INC EBUSINE		Customer Rep: WILSON, W.C.	
Well Name: RWF	Well #: 344-6	API/UWI #: 05-045-13664	
Field:	City (SAP): RIFLE	County/Parish: Garfield	State: Colorado
Legal Description:			
Lat: N 0 deg. OR N 0 deg. 0 min. 0 secs.		Long: E 0 deg. OR E 0 deg. 0 min. 0 secs.	
Contractor: H&P 280		Rig/Platform Name/Num: H&P 280	
Job Purpose: Cement Surface Casing			Ticket Amount:
Well Type: Development Well		Job Type: Cement Surface Casing	
Sales Person: HARROLD, DALE		Srvc Supervisor: MAGERS, MICHAEL	MBU ID Emp #: 339439

Activity Description	Date/Time	Cht #	Rate bbl/min	Volume bbl		Pressure psig		Comments
				Stage	Total	Tubing	Casing	
Crew Leave Yard	03/12/2009 08:00							
Arrive At Loc	03/12/2009 10:00							RIG WAS STILL RUNNING CASING WHEN HES ARRIVED. RIG CIRCULATED WHILE HES RIGGED UP.
Assessment Of Location Safety Meeting	03/12/2009 10:15							
Pre-Rig Up Safety Meeting	03/12/2009 10:25							WATER TEST- PH-7 POT-250 HARDNESS-120 IRON-0 CHLORIDE-0 SULFATE-UNDER 200 TEMP-45
Rig-Up Equipment	03/12/2009 10:30							TD-1085.5 TP-1044.6 SJ-40.90 MW-9.8 CASING-9 5/8 H-40 32.3# OH-13.5 PLUG CONTAINER-D-0426
Safety Huddle	03/12/2009 11:15							
Start Job	03/12/2009 11:42							
Other	03/12/2009 11:43		2	2			64.0	FILL LINES
Pressure Test	03/12/2009 11:46		0.5	0.5			3000.0	PRESSURE TEST
Pump Spacer 1	03/12/2009 11:48		4	20			65.0	FRESH WATER
Pump Lead Cement	03/12/2009 11:55		7	67.8			340.0	160 SKS 12.3 PPG 2.38 SK/FT3 13.75 GAL/SK

Activity Description	Date/Time	Cht #	Rate bbl/min	Volume bbl		Pressure psig		Comments
				Stage	Total	Tubing	Casing	
Pump Tail Cement	03/12/2009 12:05		7	60.1			367.0	160 SKS 12.8 PPG 2.11 SK/FT3 11.75 GAL/SK
Shutdown	03/12/2009 12:13							
Drop Plug	03/12/2009 12:14							DROPPED PLUG/PLUG WENT AWAY NO PROBLEMS
Pump Displacement	03/12/2009 12:16		10	79			378.0	FRESH WATER
Slow Rate	03/12/2009 12:23		4	69			190.0	
Bump Plug	03/12/2009 12:28		4	79			315.0	BUMPED PLUG/ GOT 29 BBLS OF CEMENT BACK TO SURFACE
Check Floats	03/12/2009 12:30		4	79			718.0	FLOATS HELD/GOT 1 BBL BACK INTO DISPLACEMENT TANK
End Job	03/12/2009 12:31							HAD GOOD CIRCULATION THROUGHOUT JOB. THANKS FOR USING HES AND THE CREW OF MIKE MAGERS

9 5/8 SURFACE



Local Event Log			
1 START JOB	11:42:05	2 FILL LINES	11:43:02
4 PUMP FRSH WTR SPACER	11:48:39	5 PUMP LEAD CEMENT	11:55:52
7 SHUT DOWN	12:13:17	8 DROP PLUG	12:14:22
10 SLOW RATE	12:23:59	11 BUMP PLUG	12:28:35
13 END JOB	12:31:58	12 CHECK FLOATS	12:30:42
		3 PRESSURE TEST	11:46:05
		6 PUMP TAIL CEMENT	12:05:00
		9 PUMP FRSH WTR DISPLACEMENT	12:16:00

Customer: WILLIAMS	Job Date: 12-Mar-2009	Sales Order #: 6557020
Well Description: RWF 344-6	Job Type: SURFACE	ADC Used: YES
Company Rep: W.C. WILSON	Cement Supervisor: MIKE MAGERS	Elite #:6 GENE WHITE

OptiCem v6.3.4
12-Mar-09 13:11