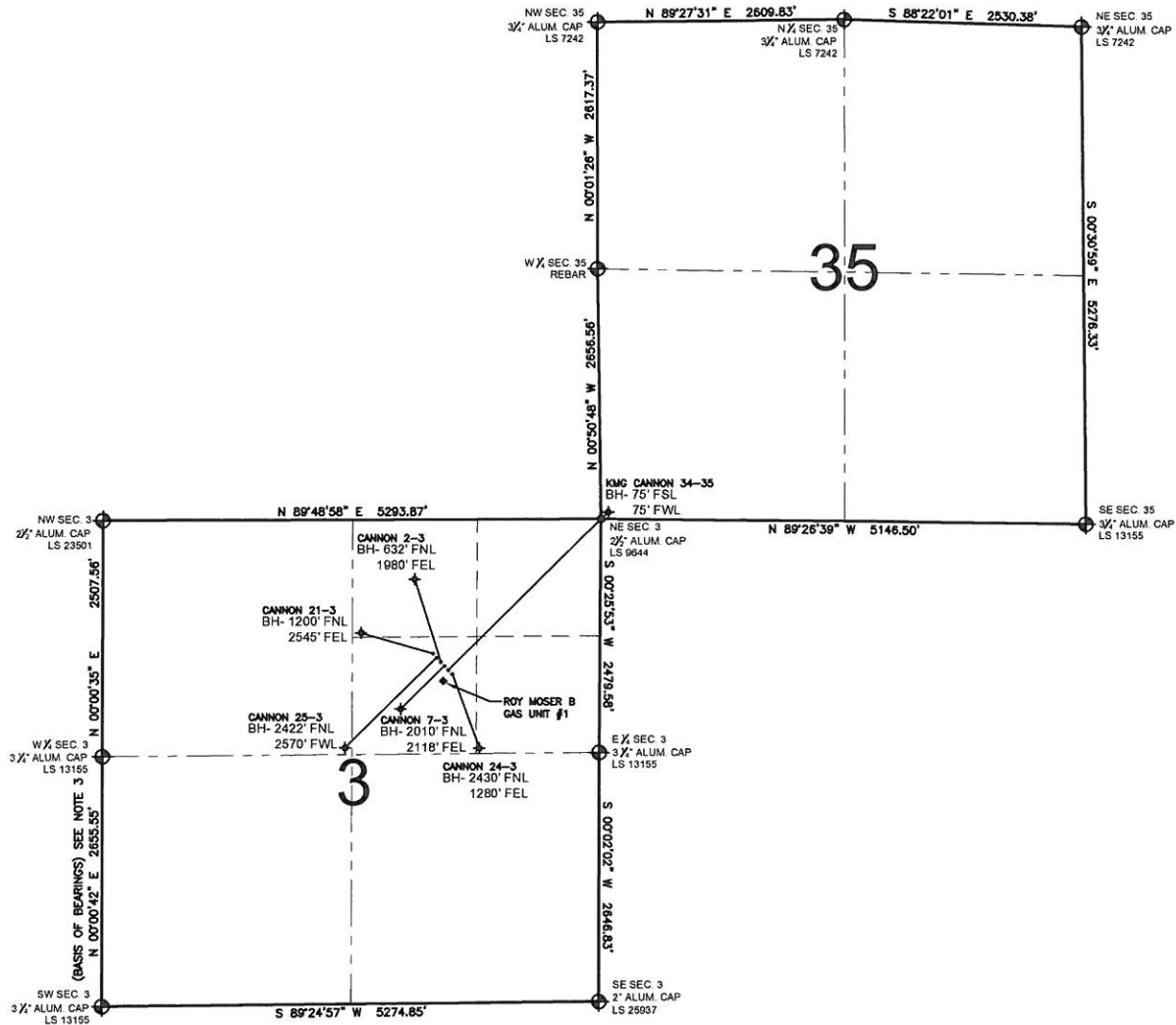


PAD DRAWING - CANNON 6 PAD

SECTION 3, TOWNSHIP 2 NORTH, RANGE 65 WEST, 6TH P.M.



LEGEND

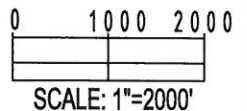
- ⊕ = EXISTING MONUMENT
- ⬤ = PROPOSED WELL
- ⬤ = BOTTOM HOLE
- ⬤ = EXISTING WELL
- BH= BOTTOM HOLE

NOTES:

- THIS SURVEY WAS DONE BY GPS METHODS AND CONFORMS TO THE MINIMUM STANDARDS SET BY THE C.O.G.C.C., RULE NO. 215
- ELEVATIONS SHOWN AT THE WELL HEAD, AS WELL AS HORIZONTAL CONTROL, ARE BASED ON GPS-RTK VALUES DERIVED FROM DOING 2-HOUR STATIC GPS SESSIONS AND REDUCTIONS USING O.P.U.S. SOLUTIONS.
VERTICAL = NAVD88; HORIZONTAL = NAD83/92
- THE BEARINGS SHOWN HEREON ARE BASED ON GPS OBSERVATIONS BETWEEN THE MONUMENTS SHOWN HEREON AS FOUND ON THE FIELD DATE BELOW.
- DISTANCES SHOWN ARE AT GROUND LEVEL, AS MEASURED IN THE FIELD, WITH TIES TO WELLS MEASURED AT A PERPENDICULAR TO SECTION LINES.

NOTES:

- CANNON 24-3 TO BE AT 1577' FNL, 1634' FEL.
- BOTTOM HOLE AT 2430' FNL & 1280' FEL.
- KMG CANNON 34-35 TO BE AT 1565' FNL, 1645' FEL.
- BOTTOM HOLE AT 75' FSL & 75' FWL.
- CANNON 7-3 TO BE AT 1554' FNL, 1657' FEL.
- BOTTOM HOLE AT 2010' FNL & 2118' FEL.
- CANNON 2-3 TO BE AT 1543' FNL, 1668' FEL.
- BOTTOM HOLE AT 632' FNL & 1980' FEL.
- CANNON 25-3 TO BE AT 1531' FNL, 1680' FEL.
- BOTTOM HOLE AT 2422' FNL & 2570' FWL.
- CANNON 21-3 TO BE AT 1520' FNL, 1691' FEL.
- BOTTOM HOLE AT 1200' FNL & 2545' FEL.
- ROY MOSER B GAS UNIT #1 IS AT 1612' FNL, 1669' FEL.



REVISIONS

INITIAL	DATE
SMF	07-26-10

PREPARED BY:

PFS

Petroleum Field Services, LLC
1801 W. 13th Ave.
Denver, CO 80204



KERR-MCGEE OIL & GAS ONSHORE LP

FIELD DATE:

06-30-10

DRAWING DATE:

07-22-10

BY:

TJN

PAD NAME:

CANNON 6 PAD

SURFACE LOCATION:

WELD COUNTY, COLORADO
SW 1/4 NE 1/4, SEC.3, T2N, R65W