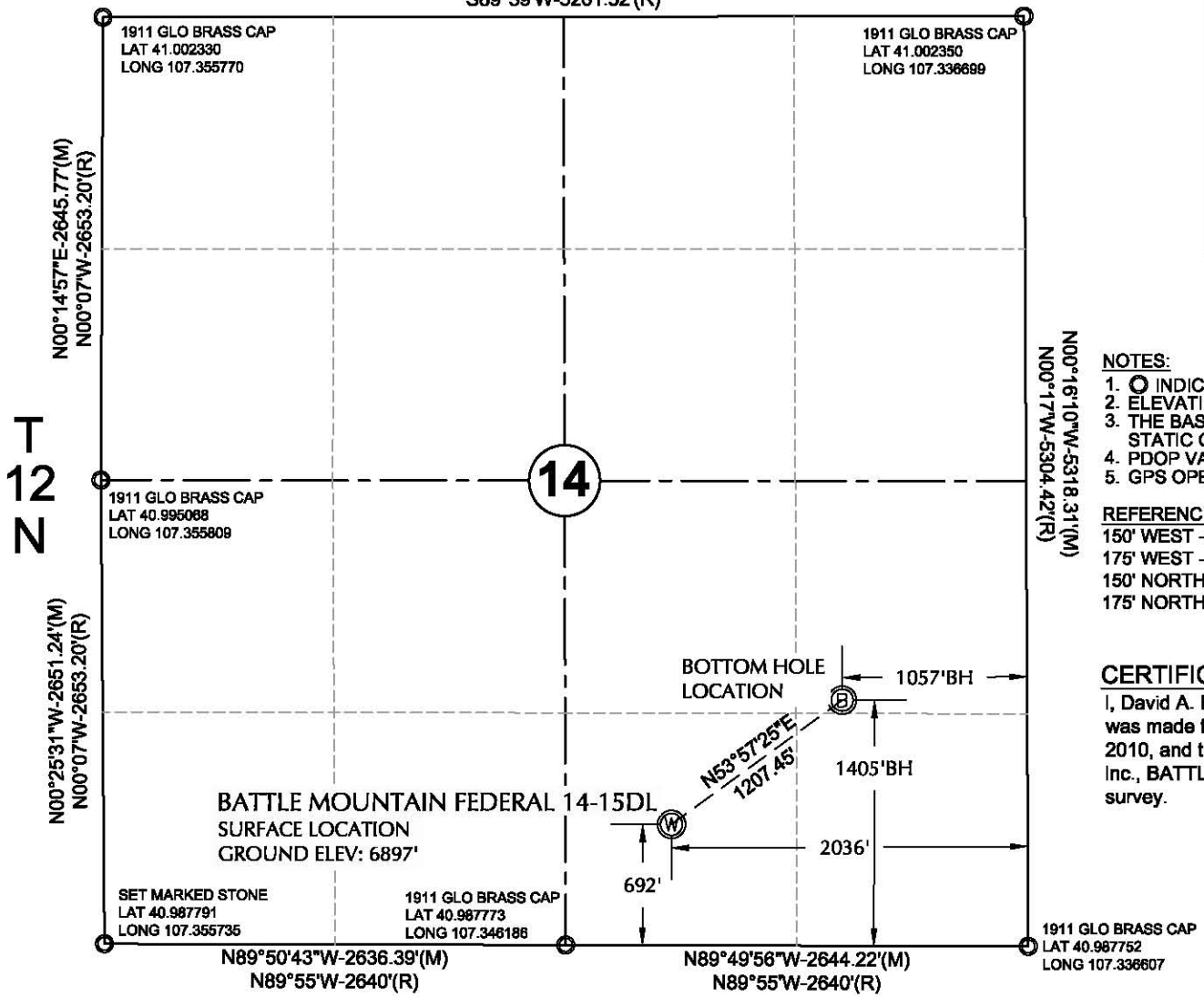


R89W

S89°55'46"W-5263.75'(M)
S89°59'W-5261.52'(R)

NAD83 SURFACE LOCATION	NAD83 BOTTOM HOLE LOCATION
LAT 40°59'22.8" (40.989666)	LAT 40°59'29.8" (40.991617)
LONG 107°20'38.4" (107.343996)	LONG 107°20'25.6" (107.340457)
STATE PLANE (CN) N=1,608,684 ft E=2,490,932 ft	STATE PLANE (CN) N=1,609,375 ft E=2,491,924 ft



NOTES:

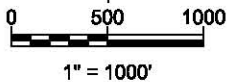
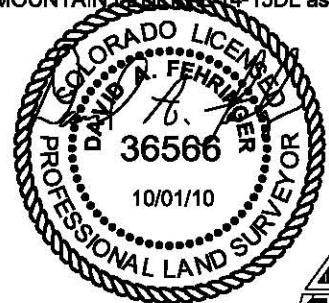
- ⊙ INDICATES FOUND MONUMENT AS DESCRIBED
- ELEVATIONS BASED ON NGVD29 BENCH MARK (X72) EL: 6555.98'
- THE BASIS OF BEARING IS NAD83 DERIVED FROM POST-PROCESSED STATIC GPS OBSERVATIONS.
- PDOP VALUE EQUALS 3.8.
- GPS OPERATOR: DAVID SIMS

REFERENCE STAKES:

- 150' WEST - N/A
- 175' WEST - N/A
- 150' NORTH - N/A
- 175' NORTH - N/A

CERTIFICATE OF SURVEYOR

I, David A. Fehring of Lander, Wyoming hereby certify that this map was made from notes taken during an actual survey made on March 10, 2010, and that it correctly shows the drilling location of ENTEK GRB, Inc., BATTLE MOUNTAIN FEDERAL 14-15DL as located during said survey.



ENTEK GRB, LLC

BATTLE MOUNTAIN FEDERAL 14-15DL
WELL LOCATION CERTIFICATE
692' FSL, 2036' FEL
SW¼SE¼, SECTION 14,
T.12N., R.89W., 6th PM
MOFFAT COUNTY, COLORADO

CHOICE ENGINEERING SERVICES
404 N Street - Suite 201 | Rock Springs, WY 82901
Phone 307-362-6065 | Fax 307-362-6064

Scale: 1"=1000'	Date: 10/01/10	SHEET NO:
REVISED:	BY DATE	1