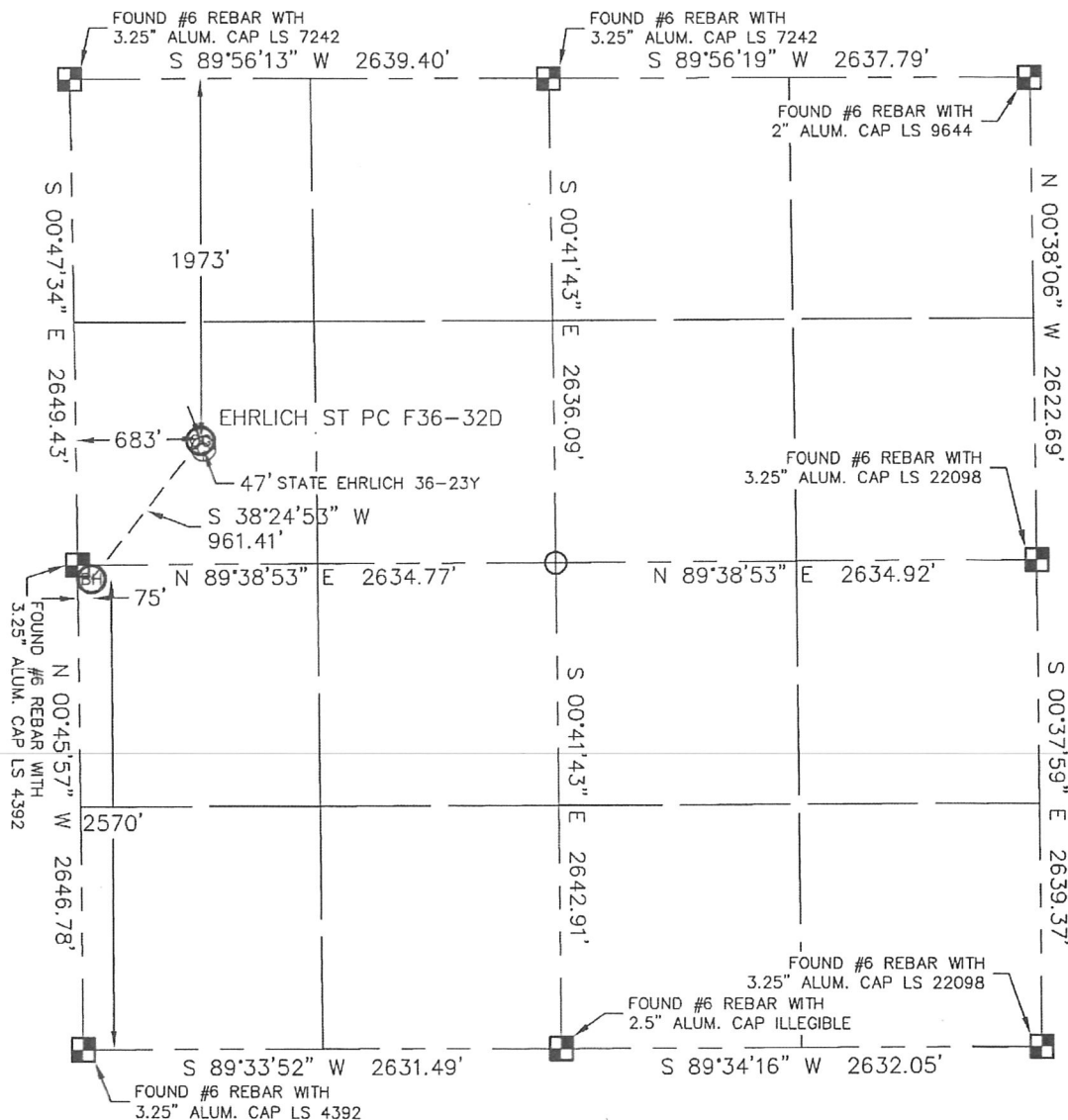


## WELL LOCATION CERTIFICATE

THIS MAP DOES NOT REPRESENT A BOUNDARY SURVEY

SECTION: 36  
TOWNSHIP: 5N  
RANGE: 65W

In accordance with a request from BRIAN DEROSE with Noble Energy Inc.

Lat40°, LLC has determined the surface location of the EHRlich ST PC F36-32D to be 1973' from the NORTH line and 683' from the WEST line and the bottom hole to be 2570' from the SOUTH line and 75' from the WEST line as measured at right angles from the section line of Section 36, Township 5 North, Range 65 West of the Sixth Principal Meridian, County of Weld, State of Colorado.

I hereby state that this Well Location Certificate was prepared by me, or under my direct supervision, that the fieldwork was completed on 5-28-10, for and on behalf of Noble Energy Inc. That this is not a Land Survey Plat or an Improvement Survey Plat, and that it is not to be relied upon for establishment of fence, building, or other future improvement lines.

## NOTE:

- 1) Bearings shown are Grid Bearings of the Colorado State Plane Coordinate System, North Zone, North American Datum 1983/2007. The lineal dimensions as contained herein are based upon the "U.S. Survey Foot."
- 2) Ground elevations are based on an observed GPS elevation (NAVD 1988 DATUM).
- 3) NEAREST EXISTING WELL: STATE EHRlich 36-23Y 47'
- 4) IMPROVEMENTS: See VISIBLE IMPROVEMENTS exhibit for all visible improvements within 400' of disturbed area.
- 5) SURFACE USE: IRRIGATED CROP, EX. WELL SITE

## SURFACE LOCATION

LATITUDE: 40.35755°N  
 LONGITUDE: 104.61851°W  
 PDOP: 1.4  
 ELEV: 4703  
 1/4, 1/4: SW1/4NW1/4

NEAREST PROPERTY LINE: 400' NORTH

## BOTTOM HOLE

LATITUDE: 40.35550°N  
 LONGITUDE: 104.62068°W

## NOTE

According to Colorado law, you must commence any legal action based upon any defect in this W.L.C. within three years after you discover such defect. In no event, may any action based upon any defect in this survey be commenced more than ten years after the date of the certificate shown hereon. (13-80-105 C.R.S.)

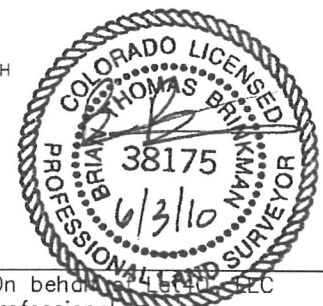
## LEGEND



= ALIQUOT MONUMENT AS DESCRIBED



= CALCULATED POSITION

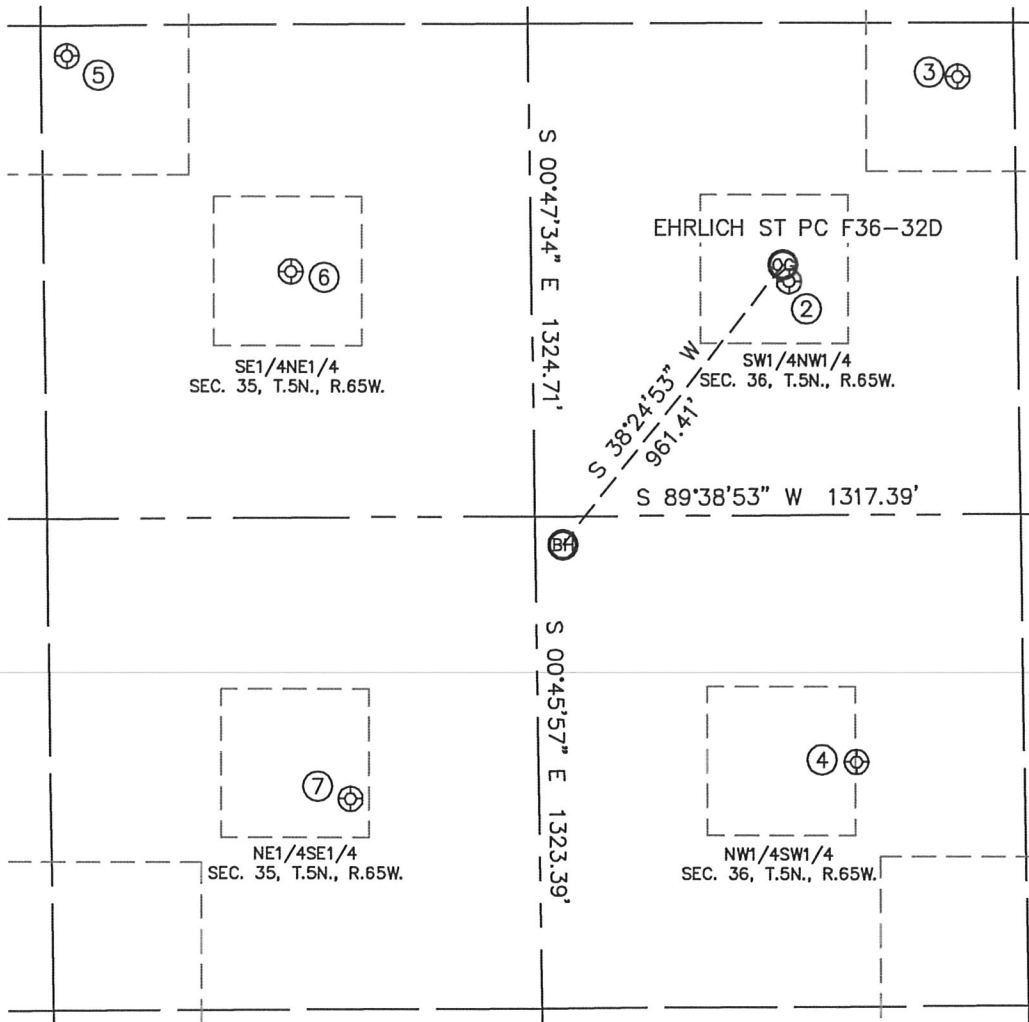


Brian T. Brinkman—On behalf of Lat40°, LLC  
 Colorado Licensed Professional  
 Land Surveyor No. 38175

PROJECT#: 2010025

# SITE SKETCH

SECTION: 36  
TOWNSHIP: 5N  
RANGE: 65W



②

STATE EHRlich 36-23Y  
SW1/4NW1/4  
2017' FNL  
698' FWL  
LAT-40.35743°N  
LONG-104.61845°W  
PDOP: 2.5  
ELEV: 4702

③

STATE EHRlich 36-25  
SW1/4NW1/4  
1467' FNL  
1165' FWL  
LAT-40.35893°N  
LONG-104.61678°W  
PDOP: 1.7  
ELEV: 4697

④

STATE EHRlich 36-32  
NW1/4SW1/4  
1981' FSL  
861' FWL  
LAT-40.35388°N  
LONG-104.61785°W  
PDOP: 1.6  
ELEV: 4731

⑤

INDORF 17-35  
SE1/4NE1/4  
1407' FNL  
1250' FEL  
LAT-40.35914°N  
LONG-104.62545°W  
PDOP: 1.5  
ELEV: 4677

⑥

WILKINSON #1  
SE1/4NE1/4  
1990' FNL  
652' FEL  
LAT-40.35753°N  
LONG-104.62330°W  
PDOP: 1.5  
ELEV: 4694

⑦

FERGUSON 43-35  
NE1/4SE1/4  
1890' FSL  
511' FEL  
LAT-40.35364°N  
LONG-104.62277°W  
PDOP: 1.4  
ELEV: 4716

