

Crestone 21-17 Reference Area Map

Proposed Access

4262

Reference Area
Lat: 38.83749
Long: -102.69730

Vecta Oil & Gas, Ltd
NW 1/4 Sec. 17, T14S, R47W
Crestone 21-17
Cheyenne County, Colorado

Road

4260

17

4261

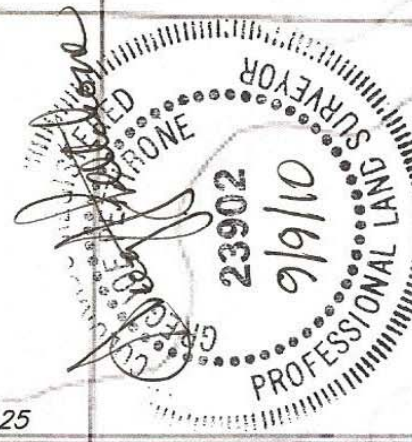
4260

20

4244

County Rd R

County Road 25



Scale 1"=1000'