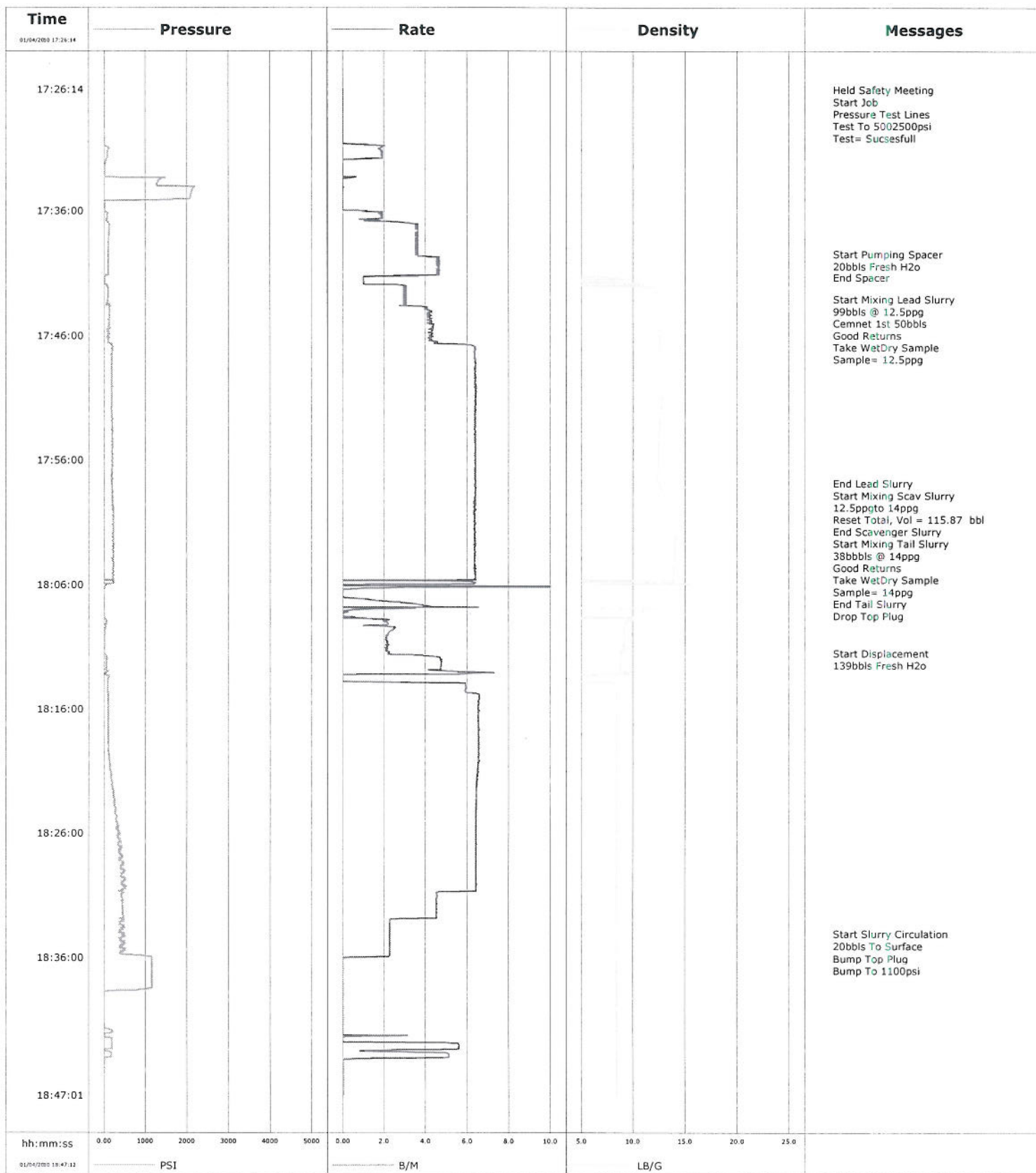
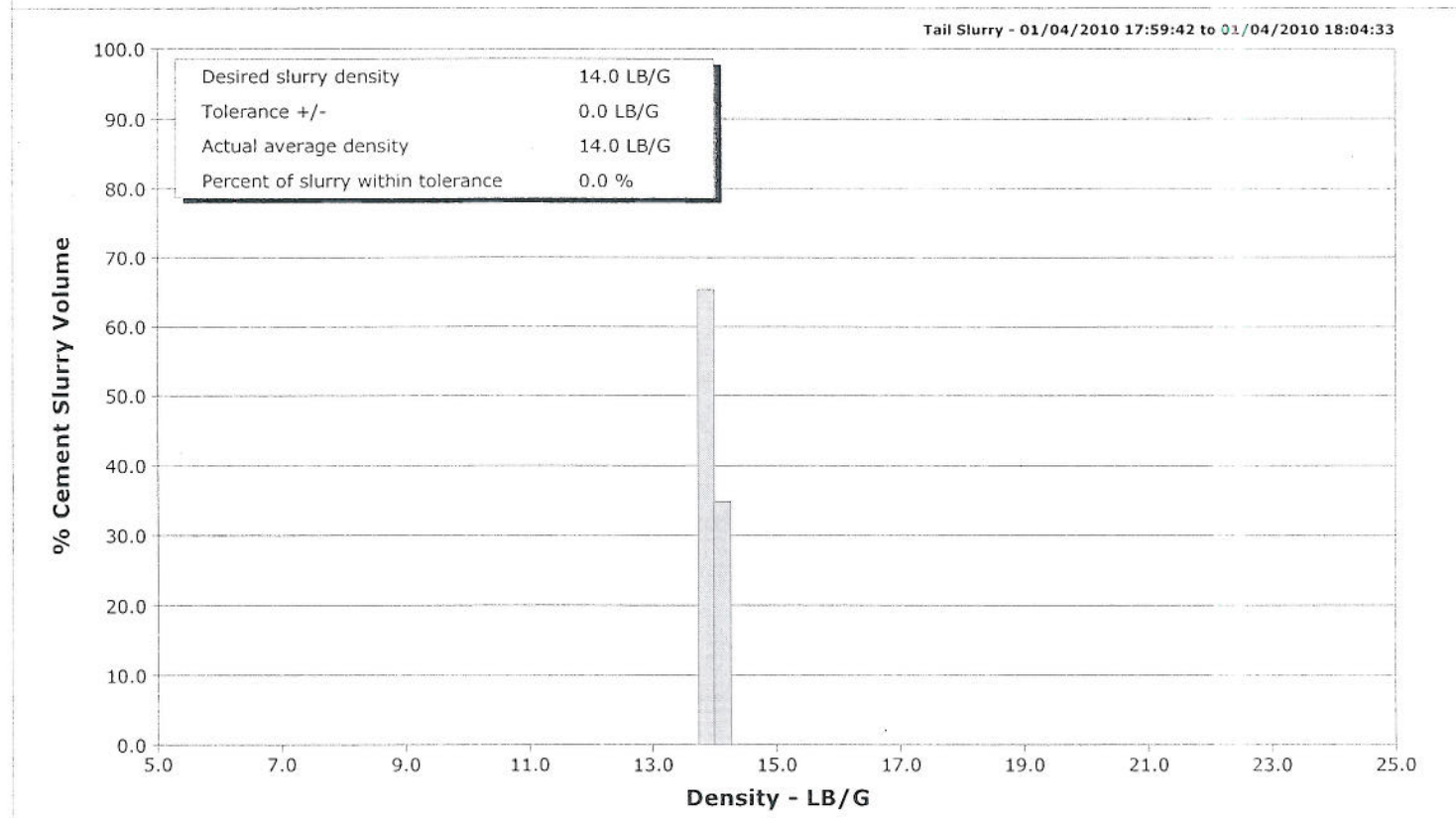
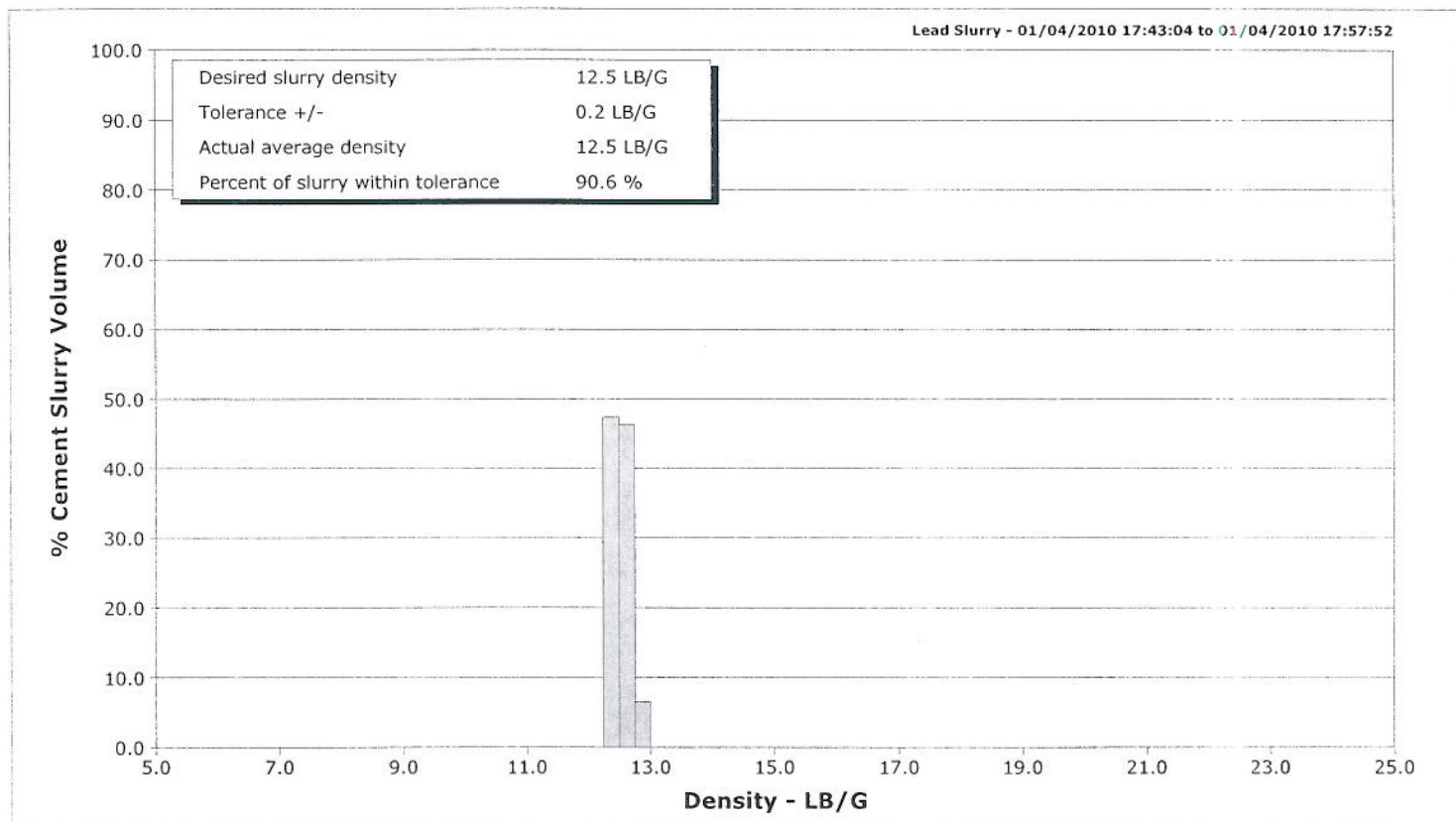


Well	EF09D-21 D27A 595	Client	ENCANA
Field		SIR No.	BAD4-00054
Engineer		Job Type	9 5/8 SURFACE
Country	United States	Job Date	01-04-2010



Schlumberger Cementing Qa/Qc Density Report

Well	EF09D-21 D27A 595	Client	ENCANA
Field		SIR No.	BAD4-00054
Engineer		Job Type	9 5/8 SURFACE
Country	United States	Job Date	01-04-2010





Cementing Service Report

Customer ENCANA				Job Number BAD4-00054			
Well EF09D-21 D27A 595		Location (legal) N PARACHUTE		Schlumberger Location GJCO		Job Start Jan/04/2010	
Field		Formation Name/Type		Deviation		Bit Size 12.3 in	
County GARFIELD		State/Province Colorado		BHP		BHST	
Well Master 0631149044		API/UWI		BHCT		Pore Press. Gradient	
Rig Name PATTERSON 308		Drilled For Gas		Service Via Land		Casing/Liner	
Offshore Zone		Well Class New		Well Type New Well Completion		Depth, ft	
Drilling Fluid Type Bentonite		Max. Density		Plastic Viscosity		Size, in	
Service Line Cementing		Job Type 9 5/8 SURFACE		Tubing/Drill Pipe		Weight, lb/ft	
Max. Allowed Tub. Press		Max. Allowed Ann. Press		WH Connection Single Cement head		Grade	
Service Instructions 263 SKS LEAD @ 12.5 140SKS TAIL @ 14ppg						Thread	
						Depth, ft	
						Size, in	
						Weight, lb/ft	
						Grade	
						Thread	
						Depth, ft	
						Size, in	
						Weight, lb/ft	
						Grade	
						Thread	
						Depth, ft	
						Size, in	
						Weight, lb/ft	
						Grade	
						Thread	
						Depth, ft	
						Size, in	
						Weight, lb/ft	
						Grade	
						Thread	
						Depth, ft	
						Size, in	
						Weight, lb/ft	
						Grade	
						Thread	
						Depth, ft	
						Size, in	
						Weight, lb/ft	
						Grade	
						Thread	
						Depth, ft	
						Size, in	
						Weight, lb/ft	
						Grade	
						Thread	
						Depth, ft	
						Size, in	
						Weight, lb/ft	
						Grade	
						Thread	
						Depth, ft	
						Size, in	
						Weight, lb/ft	
						Grade	
						Thread	
						Depth, ft	
						Size, in	
						Weight, lb/ft	
						Grade	
						Thread	
						Depth, ft	
						Size, in	
						Weight, lb/ft	
						Grade	
						Thread	
						Depth, ft	
						Size, in	
						Weight, lb/ft	
						Grade	
						Thread	
						Depth, ft	
						Size, in	
						Weight, lb/ft	
						Grade	
						Thread	
						Depth, ft	
						Size, in	
						Weight, lb/ft	
						Grade	
						Thread	
						Depth, ft	
						Size, in	
						Weight, lb/ft	
						Grade	
						Thread	
						Depth, ft	
						Size, in	
						Weight, lb/ft	
						Grade	
						Thread	
						Depth, ft	
						Size, in	
						Weight, lb/ft	
						Grade	
						Thread	
						Depth, ft	
						Size, in	
						Weight, lb/ft	
						Grade	
						Thread	
						Depth, ft	
						Size, in	
						Weight, lb/ft	
						Grade	
						Thread	
						Depth, ft	
						Size, in	
						Weight, lb/ft	
						Grade	
						Thread	
						Depth, ft	
						Size, in	
						Weight, lb/ft	
						Grade	
						Thread	
						Depth, ft	
						Size, in	
						Weight, lb/ft	
						Grade	
						Thread	
						Depth, ft	
						Size, in	
						Weight, lb/ft	
						Grade	
						Thread	
						Depth, ft	
						Size, in	
						Weight, lb/ft	
						Grade	
						Thread	
						Depth, ft	
						Size, in	
						Weight, lb/ft	
						Grade	
						Thread	
						Depth, ft	
						Size, in	
						Weight, lb/ft	
						Grade	
						Thread	
						Depth, ft	
						Size, in	
						Weight, lb/ft	
						Grade	
						Thread	
						Depth, ft	
						Size, in	
						Weight, lb/ft	
						Grade	
						Thread	
						Depth, ft	
						Size, in	
						Weight, lb/ft	
						Grade	
						Thread	
						Depth, ft	
						Size, in	
						Weight, lb/ft	
						Grade	
						Thread	
						Depth, ft	
						Size, in	
						Weight, lb/ft	
						Grade	
						Thread	
						Depth, ft	
						Size, in	
						Weight, lb/ft	
						Grade	
						Thread	
						Depth, ft	
						Size, in	
						Weight, lb/ft	
						Grade	
						Thread	
						Depth, ft	
						Size, in	
						Weight, lb/ft	
						Grade	
						Thread	
						Depth, ft	
						Size, in	
						Weight, lb/ft	
						Grade	
						Thread	
						Depth, ft	
						Size, in	
						Weight, lb/ft	
						Grade	
						Thread	
						Depth, ft	
						Size, in	
						Weight, lb/ft	
						Grade	
						Thread	
						Depth, ft	
						Size, in	
						Weight, lb/ft	
						Grade	
						Thread	
						Depth, ft	
						Size, in	
						Weight, lb/ft	
						Grade	
						Thread	
						Depth, ft	
						Size, in	
						Weight, lb/ft	
						Grade	
						Thread	
						Depth, ft	
						Size, in	
						Weight, lb/ft	
						Grade	
						Thread	
						Depth, ft	
						Size, in	
						Weight, lb/ft	
						Grade	
						Thread	
						Depth, ft	
						Size, in	
						Weight, lb/ft	
						Grade	
						Thread	
						Depth, ft	
						Size, in	
						Weight, lb/ft	
						Grade	
						Thread	
						Depth, ft	
						Size, in	
						Weight, lb/ft	
						Grade	
						Thread	
						Depth, ft	
						Size, in	
						Weight, lb/ft	
						Grade	
						Thread	
						Depth, ft	
						Size, in	
						Weight, lb/ft	
						Grade	
						Thread	
						Depth, ft	
						Size, in	
						Weight, lb/ft	
						Grade	
						Thread	
						Depth, ft	
						Size, in	
						Weight, lb/ft	
						Grade	
						Thread	
						Depth, ft	
						Size, in	
						Weight, lb/ft	
						Grade	
						Thread	
						Depth, ft	
						Size, in	
						Weight, lb/ft	
						Grade	
						Thread	
						Depth, ft	
						Size, in	
						Weight, lb/ft	
						Grade	
						Thread	
						Depth, ft	
						Size, in	
						Weight, lb/ft	
						Grade	
						Thread	
						Depth, ft	
						Size, in	
						Weight, lb/ft	
						Grade	
						Thread	
						Depth, ft	

Well			Field		Job Start	Customer	Job Number
EF09D-21 D27A 595					Jan/04/2010	ENCANA	BAD4-00054
Date	Time 24-hr clock	Treating Pressure PSI	Flow Rate B/M	Density LB/G	Volume BBL	Message	
01/04/2010	17:32:12	31	0.0	0.01	2.2		
01/04/2010	17:32:42	19	0.0	0.01	2.2		
01/04/2010	17:33:12	16	0.0	0.01	2.2		
01/04/2010	17:33:42	1293	0.0	0.01	2.2		
01/04/2010	17:34:12	2149	0.0	0.01	2.2		
01/04/2010	17:34:42	2094	0.0	0.01	2.2		
01/04/2010	17:35:12	6	0.0	0.01	2.2		
01/04/2010	17:35:42	12	0.0	0.01	2.2		
01/04/2010	17:36:12	106	1.8	0.01	2.6		
01/04/2010	17:36:42	59	1.2	0.01	3.5		
01/04/2010	17:37:12	122	3.5	0.22	4.7		
01/04/2010	17:37:42	125	3.6	0.18	6.5		
01/04/2010	17:38:12	115	3.5	0.07	8.3		
01/04/2010	17:38:42	115	3.5	0.04	10.1		
01/04/2010	17:39:12	110	3.6	0.03	11.9		
01/04/2010	17:39:27					Start Pumping Spacer	
01/04/2010	17:39:27	103	3.6	0.05	12.8		
01/04/2010	17:39:29					20bbls Fresh H2o	
01/04/2010	17:39:29	111	3.6	0.04	13.0		
01/04/2010	17:39:42	110	4.3	0.01	13.8		
01/04/2010	17:40:12	111	4.6	0.03	16.1		
01/04/2010	17:40:42	106	4.6	0.05	18.4		
01/04/2010	17:41:12	51	4.6	0.00	20.7		
01/04/2010	17:41:19					End Spacer	
01/04/2010	17:41:19	21	1.0	2.19	21.0		
01/04/2010	17:41:42	13	1.0	1.90	21.4		
01/04/2010	17:42:12	94	3.1	12.15	22.4		
01/04/2010	17:42:42	98	3.0	12.27	23.9		
01/04/2010	17:43:04					Start Mixing Lead Slurry	
01/04/2010	17:43:04	94	2.9	12.32	24.9		
01/04/2010	17:43:06					99bbls @ 12.5ppg	
01/04/2010	17:43:06					Cemnet 1st 50bbls	
01/04/2010	17:43:06					Good Returns	
01/04/2010	17:43:06	89	2.9	12.33	25.0		
01/04/2010	17:43:07					Take WetDry Sample	
01/04/2010	17:43:07					Sample= 12.5ppg	
01/04/2010	17:43:07	92	2.9	12.33	25.1		
01/04/2010	17:43:12	90	2.9	12.34	25.3		
01/04/2010	17:43:42	120	3.7	12.37	26.9		
01/04/2010	17:44:12	130	4.1	12.42	28.9		
01/04/2010	17:44:42	126	4.2	12.48	31.0		
01/04/2010	17:45:12	120	4.4	12.51	33.1		
01/04/2010	17:45:42	100	4.3	12.52	35.2		
01/04/2010	17:46:12	103	4.1	12.52	37.4		
01/04/2010	17:46:42	199	5.3	12.57	39.6		
01/04/2010	17:47:12	202	6.4	12.55	42.7		
01/04/2010	17:47:42	192	6.4	12.55	45.9		
01/04/2010	17:48:12	189	6.4	12.54	49.0		
01/04/2010	17:48:42	183	6.4	12.53	52.2		
01/04/2010	17:49:12	188	6.4	12.53	55.4		
01/04/2010	17:49:42	187	6.4	12.47	58.6		
01/04/2010	17:50:12	178	6.4	12.52	61.8		
01/04/2010	17:50:42	182	6.4	12.81	65.0		
01/04/2010	17:51:12	183	6.4	12.77	68.2		

Well			Field		Job Start	Customer	Job Number
EF09D-21 D27A 595					Jan/04/2010	ENCANA	BAD4-00054
Date	Time 24-hr clock	Treating Pressure PSI	Flow Rate B/M	Density LB/G	Volume BBL	Message	
01/04/2010	17:52:12	183	6.4	12.61	74.6		
01/04/2010	17:52:42	198	6.4	12.53	77.8		
01/04/2010	17:53:12	196	6.4	12.50	81.0		
01/04/2010	17:53:42	208	6.4	12.48	84.2		
01/04/2010	17:54:12	196	6.4	12.46	87.4		
01/04/2010	17:54:42	205	6.4	12.45	90.5		
01/04/2010	17:55:12	198	6.4	12.44	93.7		
01/04/2010	17:55:42	200	6.4	12.44	96.9		
01/04/2010	17:56:12	201	6.4	12.41	100.1		
01/04/2010	17:56:42	197	6.4	12.40	103.3		
01/04/2010	17:57:12	185	6.4	12.35	106.5		
01/04/2010	17:57:42	185	6.4	12.38	109.7		
01/04/2010	17:57:52					End Lead Slurry	
01/04/2010	17:57:52	181	6.4	12.50	110.8		
01/04/2010	17:57:55					Start Mixing Scav Slurry	
01/04/2010	17:57:55	182	6.4	12.53	111.1		
01/04/2010	17:58:02					12.5ppgto 14ppg	
01/04/2010	17:58:02	192	6.4	12.58	111.8		
01/04/2010	17:58:12	199	6.4	12.59	112.9		
01/04/2010	17:58:40					Reset Total, Vol = 115.87 bbl	
01/04/2010	17:58:40	199	6.4	12.89	115.9		
01/04/2010	17:58:42	197	6.4	12.90	116.1		
01/04/2010	17:59:12	197	6.3	13.49	119.3		
01/04/2010	17:59:41					End Scavenger Slurry	
01/04/2010	17:59:41	206	6.3	13.86	122.4		
01/04/2010	17:59:42					Start Mixing Tail Slurry	
01/04/2010	17:59:42	207	6.4	13.87	122.5		
01/04/2010	17:59:43					38bbbls @ 14ppg	
01/04/2010	17:59:43	205	6.4	13.87	122.6		
01/04/2010	17:59:44					Good Returns	
01/04/2010	17:59:44					Take WetDry Sample	
01/04/2010	17:59:44					Sample= 14ppg	
01/04/2010	17:59:44	209	6.4	13.88	122.7		
01/04/2010	18:00:12	238	6.3	14.00	125.6		
01/04/2010	18:00:42	215	6.4	13.96	128.8		
01/04/2010	18:01:12	218	6.3	14.03	132.0		
01/04/2010	18:01:42	220	6.4	14.02	135.2		
01/04/2010	18:02:12	221	6.3	14.01	138.3		
01/04/2010	18:02:42	226	6.4	14.01	141.5		
01/04/2010	18:03:12	209	6.4	13.98	144.7		
01/04/2010	18:03:42	229	6.4	13.96	147.9		
01/04/2010	18:04:12	233	6.4	13.95	151.1		
01/04/2010	18:04:33					End Tail Slurry	
01/04/2010	18:04:33	229	6.4	13.96	153.3		
01/04/2010	18:04:37					Drop Top Plug	
01/04/2010	18:04:37	223	6.4	13.97	153.7		
01/04/2010	18:04:42	219	6.3	13.61	154.3		
01/04/2010	18:05:12	209	6.4	13.87	157.4		
01/04/2010	18:05:42	186	0.0	3.51	160.3		
01/04/2010	18:06:12	5	6.8	3.91	163.7		
01/04/2010	18:06:42	-5	0.0	0.23	164.1		
01/04/2010	18:07:12	-1	1.2	0.19	164.2		
01/04/2010	18:07:42	-1	3.9	0.18	165.5		
01/04/2010	18:08:12	-1	0.2	10.82	166.3		

Well			Field		Job Start	Customer	Job Number
EF09D-21 D27A 595					Jan/04/2010	ENCANA	BAD4-00054
Date	Time 24-hr clock	Treating Pressure PSI	Flow Rate B/M	Density LB/G	Volume BBL	Message	
01/04/2010	18:09:12	39	2.2	9.28	167.3		
01/04/2010	18:09:42	17	2.4	9.10	168.4		
01/04/2010	18:10:12	6	2.1	9.14	169.5		
01/04/2010	18:10:42	5	2.2	9.10	170.6		
01/04/2010	18:11:12	4	2.1	9.10	171.7		
01/04/2010	18:11:29					Start Displacement	
01/04/2010	18:11:29	7	2.2	8.81	172.3		
01/04/2010	18:11:30					139bbbls Fresh H2O	
01/04/2010	18:11:30	6	2.2	8.83	172.3		
01/04/2010	18:11:42	41	3.7	8.85	172.8		
01/04/2010	18:12:12	65	4.8	8.78	175.1		
01/04/2010	18:12:42	61	4.7	8.73	177.5		
01/04/2010	18:13:12	47	5.6	9.58	180.2		
01/04/2010	18:13:42	96	0.0	-0.03	180.3		
01/04/2010	18:14:12	84	5.9	8.37	182.2		
01/04/2010	18:14:42	103	6.0	8.35	185.1		
01/04/2010	18:15:12	104	6.6	8.37	188.4		
01/04/2010	18:15:42	108	6.5	8.38	191.7		
01/04/2010	18:16:12	108	6.6	8.38	194.9		
01/04/2010	18:16:42	104	6.5	8.38	198.2		
01/04/2010	18:17:12	106	6.5	8.38	201.5		
01/04/2010	18:17:42	105	6.6	8.38	204.7		
01/04/2010	18:18:12	106	6.5	8.38	208.0		
01/04/2010	18:18:42	108	6.5	8.38	211.3		
01/04/2010	18:19:12	111	6.5	8.38	214.6		
01/04/2010	18:19:42	122	6.5	8.38	217.8		
01/04/2010	18:20:12	131	6.6	8.38	221.1		
01/04/2010	18:20:42	142	6.5	8.38	224.4		
01/04/2010	18:21:12	162	6.5	8.38	227.6		
01/04/2010	18:21:42	175	6.5	8.38	230.8		
01/04/2010	18:22:12	191	6.5	8.38	234.1		
01/04/2010	18:22:42	217	6.4	8.38	237.3		
01/04/2010	18:23:12	226	6.4	8.38	240.5		
01/04/2010	18:23:42	247	6.4	8.38	243.7		
01/04/2010	18:24:12	275	6.4	8.38	247.0		
01/04/2010	18:24:42	311	6.4	8.38	250.2		
01/04/2010	18:25:12	325	6.4	8.38	253.4		
01/04/2010	18:25:42	337	6.4	8.38	256.6		
01/04/2010	18:26:12	363	6.4	8.38	259.8		
01/04/2010	18:26:42	411	6.4	8.38	263.0		
01/04/2010	18:27:12	405	6.4	8.38	266.2		
01/04/2010	18:27:42	423	6.4	8.38	269.4		
01/04/2010	18:28:12	380	6.4	8.38	272.6		
01/04/2010	18:28:42	381	6.4	8.38	275.9		
01/04/2010	18:29:12	460	6.4	8.38	279.1		
01/04/2010	18:29:42	504	6.4	8.38	282.3		
01/04/2010	18:30:12	492	6.4	8.38	285.5		
01/04/2010	18:30:42	354	6.2	8.38	288.7		
01/04/2010	18:31:12	423	4.5	8.38	291.0		
01/04/2010	18:31:42	433	4.5	8.38	293.2		
01/04/2010	18:32:12	447	4.5	8.38	295.5		
01/04/2010	18:32:42	465	4.5	8.38	297.8		
01/04/2010	18:33:12	362	2.3	8.38	299.4		
01/04/2010	18:33:42	418	2.3	8.38	300.5		

Well			Field		Job Start		Customer		Job Number	
EF09D-21 D27A 595					Jan/04/2010		ENCANA		BAD4-00054	
Date	Time 24-hr clock	Treating Pressure PSI	Flow Rate B/M	Density LB/G	Volume BBL	Message				
01/04/2010	18:34:05	492	2.3	8.38	301.4					
01/04/2010	18:34:10					20bbls To Surface				
01/04/2010	18:34:10	417	2.3	8.38	301.6					
01/04/2010	18:34:12	488	2.3	8.38	301.6					
01/04/2010	18:34:42	498	2.3	8.38	302.8					
01/04/2010	18:35:12	410	2.3	8.38	303.9					
01/04/2010	18:35:42	380	2.3	8.38	305.0					
01/04/2010	18:36:04					Bump Top Plug				
01/04/2010	18:36:04	1150	0.1	8.38	305.7					
01/04/2010	18:36:05					Bump To 1100psi				
01/04/2010	18:36:05	1147	0.0	8.38	305.7					
01/04/2010	18:36:12	1151	0.0	8.38	305.7					
01/04/2010	18:36:42	1144	0.0	8.38	305.7					
01/04/2010	18:37:12	1146	0.0	8.38	305.7					
01/04/2010	18:37:42	1147	0.0	8.38	305.7					
01/04/2010	18:38:12	1148	0.0	8.38	305.7					
01/04/2010	18:38:42	240	0.0	8.38	305.7					
01/04/2010	18:39:12	-4	0.0	8.38	305.7					
01/04/2010	18:39:42	-4	0.0	8.38	305.7					
01/04/2010	18:40:12	-3	0.0	8.38	305.7					
01/04/2010	18:40:42	-3	0.0	8.38	305.7					
01/04/2010	18:41:12	-3	0.0	8.38	305.7					
01/04/2010	18:41:42	2	0.0	8.38	305.7					
01/04/2010	18:42:12	9	0.0	8.38	305.7					
01/04/2010	18:42:42	188	0.0	8.38	305.9					
01/04/2010	18:43:12	191	5.6	8.38	307.9					
01/04/2010	18:43:42	173	5.1	8.38	309.9					
01/04/2010	18:44:12	2	0.0	8.38	311.9					
01/04/2010	18:44:42	-1	0.0	8.38	311.9					
01/04/2010	18:45:12	0	0.0	8.38	311.9					
01/04/2010	18:45:42	-1	0.0	8.38	311.9					
01/04/2010	18:46:12	-1	0.0	8.38	311.9					

Post Job Summary

Average Pump Rates, bbl/min					Volume of Fluid Injected, bbl					
Slurry	N2	Mud	Maximum Rate	Total Slurry	Mud	Spacer	N2			
4.9		0.0	25.0	311.9	0.0	21.0				
Treating Pressure Summary, psi					Breakdown Fluid					
Maximum	Final	Average	Bump Plug to	Breakdown	Type	Volume	Density			
2181	-1	264	1100							
Avg. N2 Percent	Designed Slurry Volume		Displacement	Mix Water Temp	Cement Circulated to Surface?		Volume			
	137.0 bbl		152.0 bbl	72 degF	<input checked="" type="checkbox"/>		20.0 bbl			
Customer or Authorized Representative			Schlumberger Supervisor			Washed Thru Perfs	To			
						<input type="checkbox"/>	Job Completed	<input checked="" type="checkbox"/>		
IRA COX			JASON CRICK			-	-			