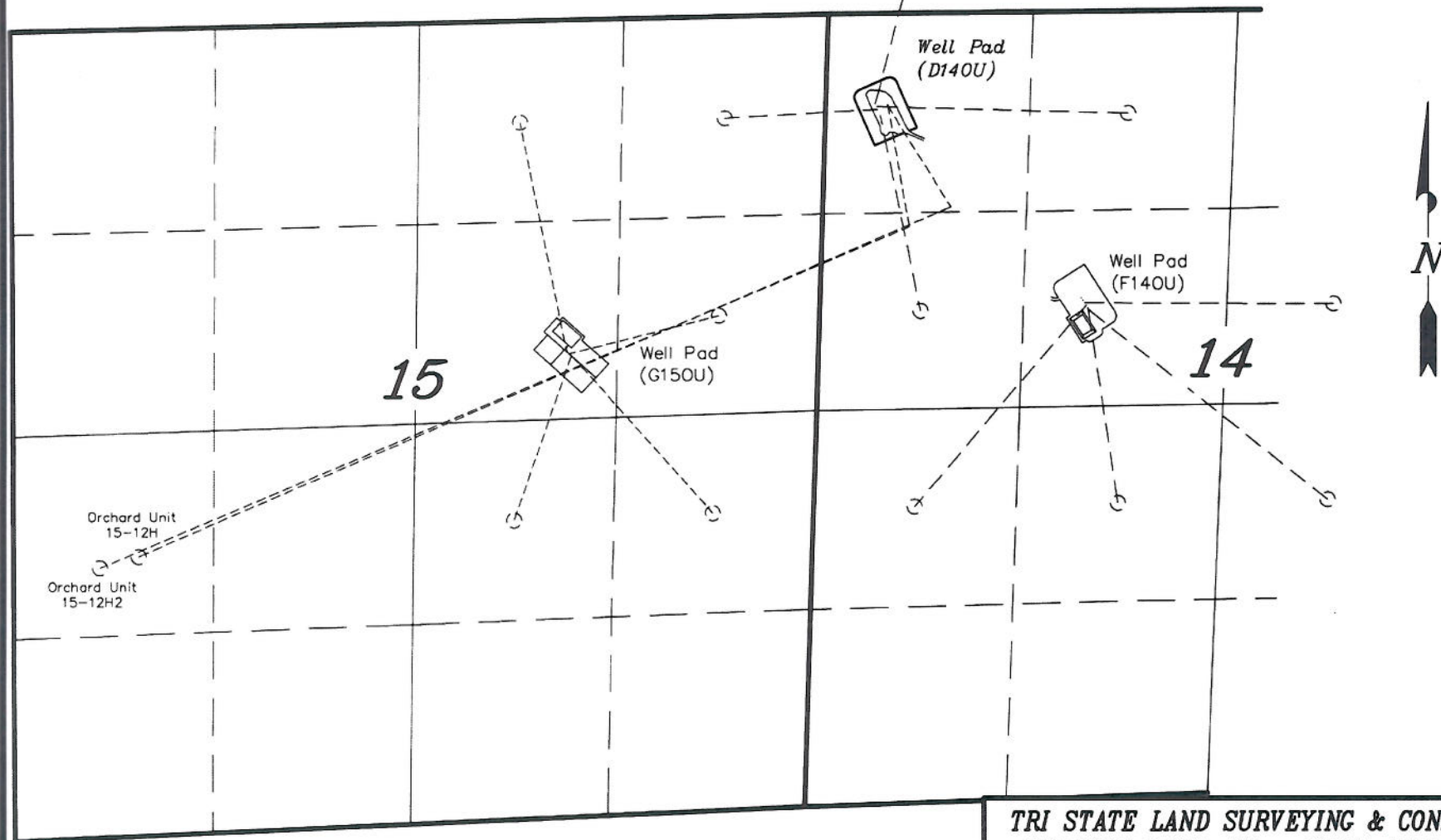


T8S, R96W, 6th P.M.

ENCANA OIL & GAS (USA) INC

**GENERAL MULTI WELL PLAN
SECTION DRILLING MAP
WELL PAD (D140U)**



TRI STATE LAND SURVEYING & CONSULTING

180 NORTH VERNAL AVE. - VERNAL, UTAH 84078
(435) 781-2501

DATE SURVEYED:
03-25-10

SURVEYED BY: C.D.S.

SHEET

DATE DRAWN:
09-22-10

DRAWN BY: L.C.S.

1

REVISED:

SCALE: 1" = 1000'

OF 11

ENCANA OIL & GAS (USA) INC

WELL PAD INTERFERENCE PLAT WELL PAD (C160U)

Section 16, T8S, R96W, 6th P.M.

TOP HOLE FOOTAGES

ORCHARD UNIT 15-12H2 (D140U)
590' FNL & 405' FWL

ORCHARD UNIT 15-12H (D140U)
610' FNL & 414' FWL

BOTTOM HOLE FOOTAGES

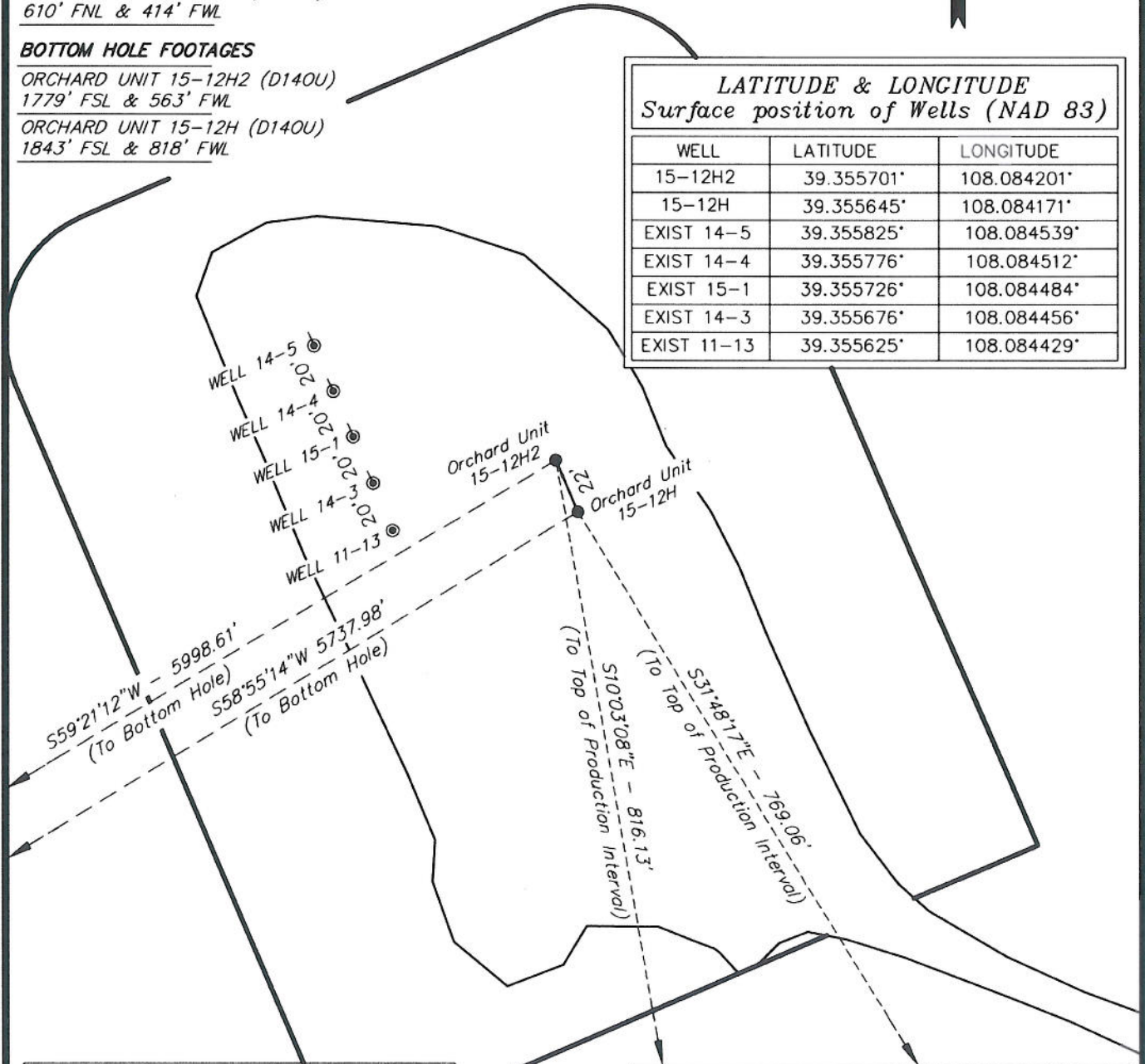
ORCHARD UNIT 15-12H2 (D140U)
1779' FSL & 563' FWL

ORCHARD UNIT 15-12H (D140U)
1843' FSL & 818' FWL



LATITUDE & LONGITUDE Surface position of Wells (NAD 83)

WELL	LATITUDE	LONGITUDE
15-12H2	39.355701°	108.084201°
15-12H	39.355645°	108.084171°
EXIST 14-5	39.355825°	108.084539°
EXIST 14-4	39.355776°	108.084512°
EXIST 15-1	39.355726°	108.084484°
EXIST 14-3	39.355676°	108.084456°
EXIST 11-13	39.355625°	108.084429°



RELATIVE COORDINATES From top hole to bottom hole

WELL	NORTH	EAST
15-12H2	-3,058'	-5,161'
15-12H	-2,962'	-4,914'

Note:
Bearings are based on G.P.S. observations.

LATITUDE & LONGITUDE Bottom of hole position (NAD 83)

WELL	LATITUDE	LONGITUDE
15-12H2	39.347314°	108.102450°
15-12H	39.347519°	108.101547°

SURVEYED BY: L.D.V. DATE SURVEYED: 07-11-06
DRAWN BY: F.T.M. DATE DRAWN: 10-10-06
SCALE: 1" = 60' REVISED: L.C.S. 06-28-10

Tri State
Land Surveying, Inc.
180 NORTH VERNAL AVE. VERNAL, UTAH 84078
(435) 781-2501

SHEET
3
OF 11