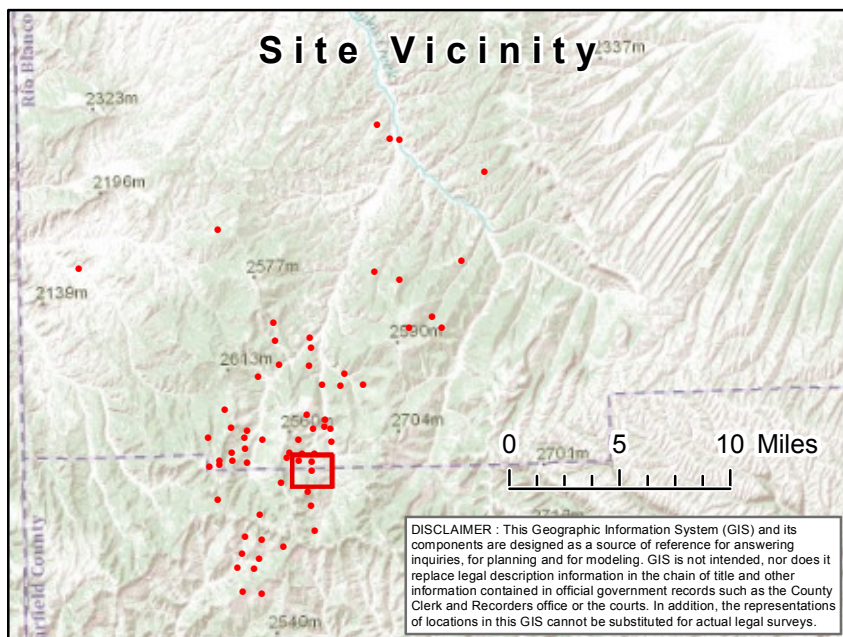


API #: 05-045-06082	Land Type: Rangeland	Receptor Name Little Foundation Creek
Legal: SESE,Sec.2,T5SR102W	Soil Type: Gravelly loam	Receptor Distance: 99 Feet
Sensitive Area (Y/N): Y		Receptor Type: Intermittent/Ephemeral

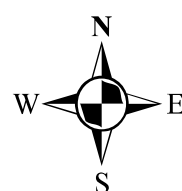


Aerial Site Detail Map

Location:
7407 FOUNDATION CREEK B (05-045-06082)
EnCana Oil and Gas (USA) Inc.

Legend

- Well Pad
- Roads
- PLSS**
 - Township
 - Section
 - CO Headwaters-Plateau Watershed Boundary
 - Lower White River Watershed Boundary
- Hydrography**
 - ⊕ Gauging Station
 - ~ Spring/Seep
 - + Water Intake/Outflow
 - ⊙ Waterfall
 - Well
 - Lake/Pond
 - Perennial Stream
 - Intermittent/Ephemeral Stream
 - Ditch/Canal/Aqueduct
 - Stream Connector
 - Artificial Flow Path
 - 500' Hydrography Buffer



0 250 500 1,000 Feet

