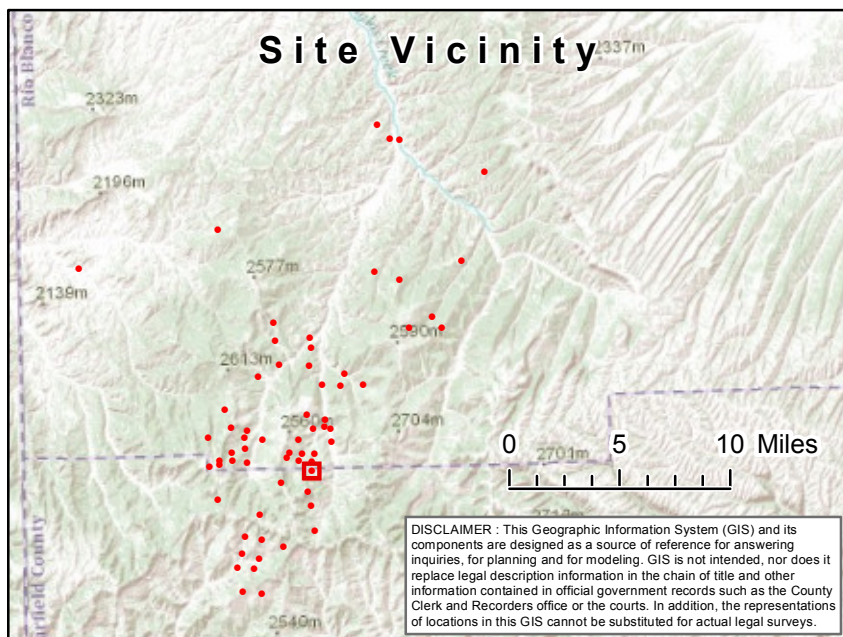




API #: 05-045-06082	Land Type: Rangeland	Receptor Name Little Foundation Creek
Legal: SESE,Sec.2,T5SR102W	Soil Type: Gravelly loam	Receptor Distance: 99 Feet
Sensitive Area (Y/N): Y		Receptor Type: Intermittent/Ephemeral



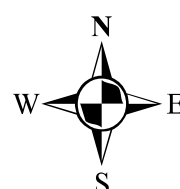
## Aerial Site Detail Map

Location: 7407 FOUNDATION CREEK B (05-045-06082)

*EnCana Oil and Gas (USA) Inc.*

### Legend

- Well Pad
- Roads
- PLSS**
  - Township
  - Section
  - CO Headwaters-Plateau Watershed Boundary
  - Lower White River Watershed Boundary
- Hydrography**
  - ⊕ Gauging Station
  - ~ Spring/Seep
  - + Water Intake/Outflow
  - ⊙ Waterfall
  - Well
  - Lake/Pond
  - Perennial Stream
  - Intermittent/Ephemeral Stream
  - Ditch/Canal/Aqueduct
  - Stream Connector
  - Artificial Flow Path
  - 500' Hydrography Buffer



0 62.5 125 250 Feet

