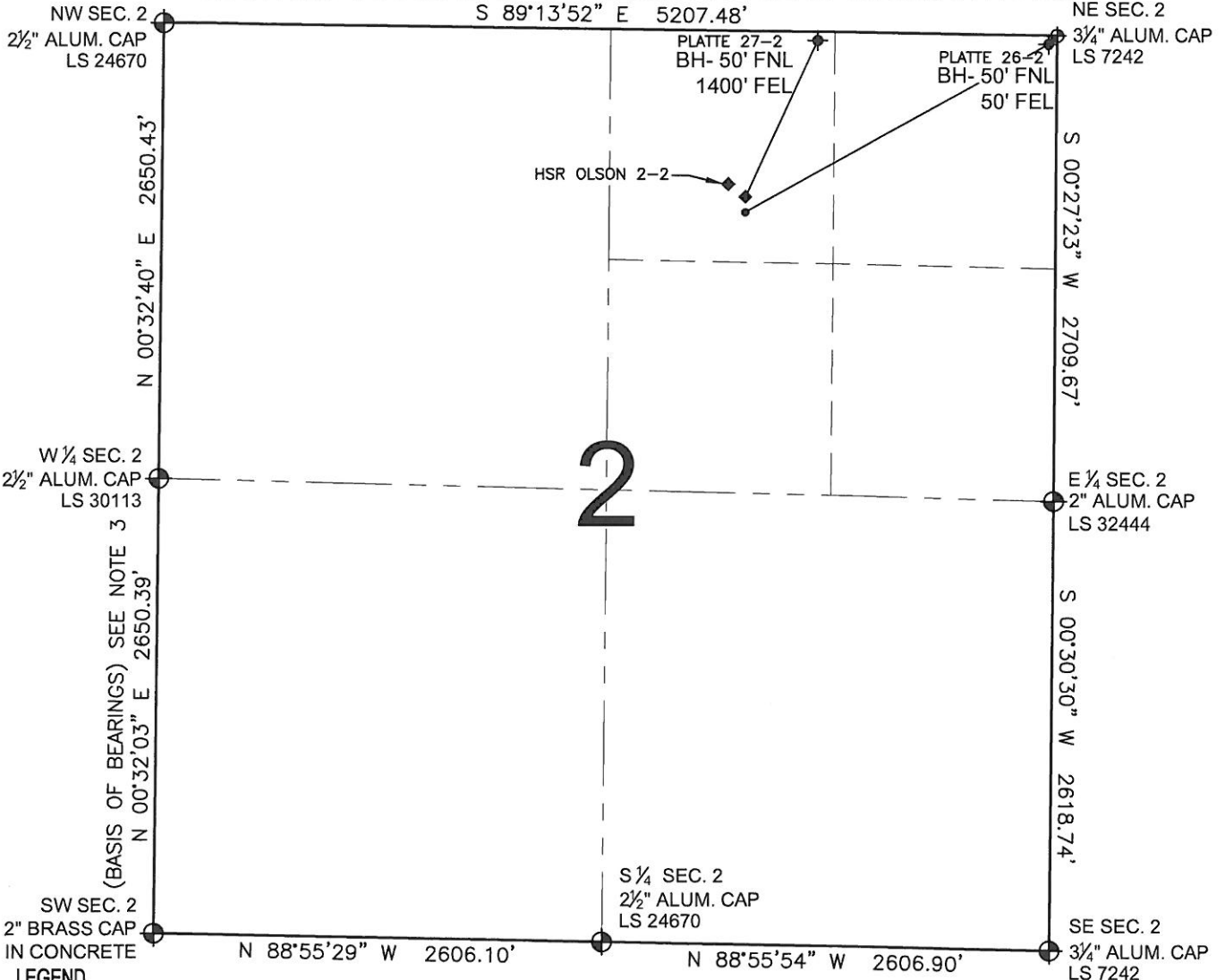


PAD DRAWING - PLATTE 26-2 PAD

SECTION 2, TOWNSHIP 3 NORTH, RANGE 67 WEST, 6TH P.M.



LEGEND

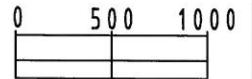
- ⊕ = EXISTING MONUMENT
- = PROPOSED WELL
- ◆ = BOTTOM HOLE
- ◆ = EXISTING WELL
- BH= BOTTOM HOLE

NOTES:

- THIS SURVEY WAS DONE BY GPS METHODS AND CONFORMS TO THE MINIMUM STANDARDS SET BY THE C.O.G.C.C., RULE NO. 215
- ELEVATIONS SHOWN AT THE WELL HEAD, AS WELL AS HORIZONTAL CONTROL, ARE BASED ON GPS-RTK VALUES DERIVED FROM DOING 2-HOUR STATIC GPS SESSIONS AND REDUCTIONS USING O.P.U.S. SOLUTIONS.
VERTICAL = NAVD88; HORIZONTAL = NAD83/92
- THE BEARINGS SHOWN HEREON ARE BASED ON GPS OBSERVATIONS BETWEEN THE MONUMENTS SHOWN HEREON AS FOUND ON THE FIELD DATE BELOW.
- DISTANCES SHOWN ARE AT GROUND LEVEL, AS MEASURED IN THE FIELD, WITH TIES TO WELLS MEASURED AT A PERPENDICULAR TO SECTION LINES.

NOTES:

- PLATTE 26-2 TO BE AT 1053' FNL, 1814' FEL.
- BOTTOM HOLE AT 50' FNL & 50' FEL.
- PLATTE 27-2 IS 1005' FNL, 1814' FEL.
- BOTTOM HOLE AT 50' FNL & 1400' FEL.
- HSR OLSON 2-2 IS 959' FNL, 1873' FEL.



SCALE: 1"=1000'

REVISIONS	
INITIAL	DATE

PREPARED BY:

PFS
Petroleum Field Services, LLC
1801 W. 13th Ave.
Denver, CO 80204

KERR-MCGEE OIL & GAS ONSHORE LP

FIELD DATE:
05-17-10

PAD NAME:
PLATTE 26-2 PAD

DRAWING DATE:
09-28-10

SURFACE LOCATION:

BY:
SMF

WELD COUNTY, COLORADO
NW 1/4 NE 1/4, SEC. 2, T3N, R67W