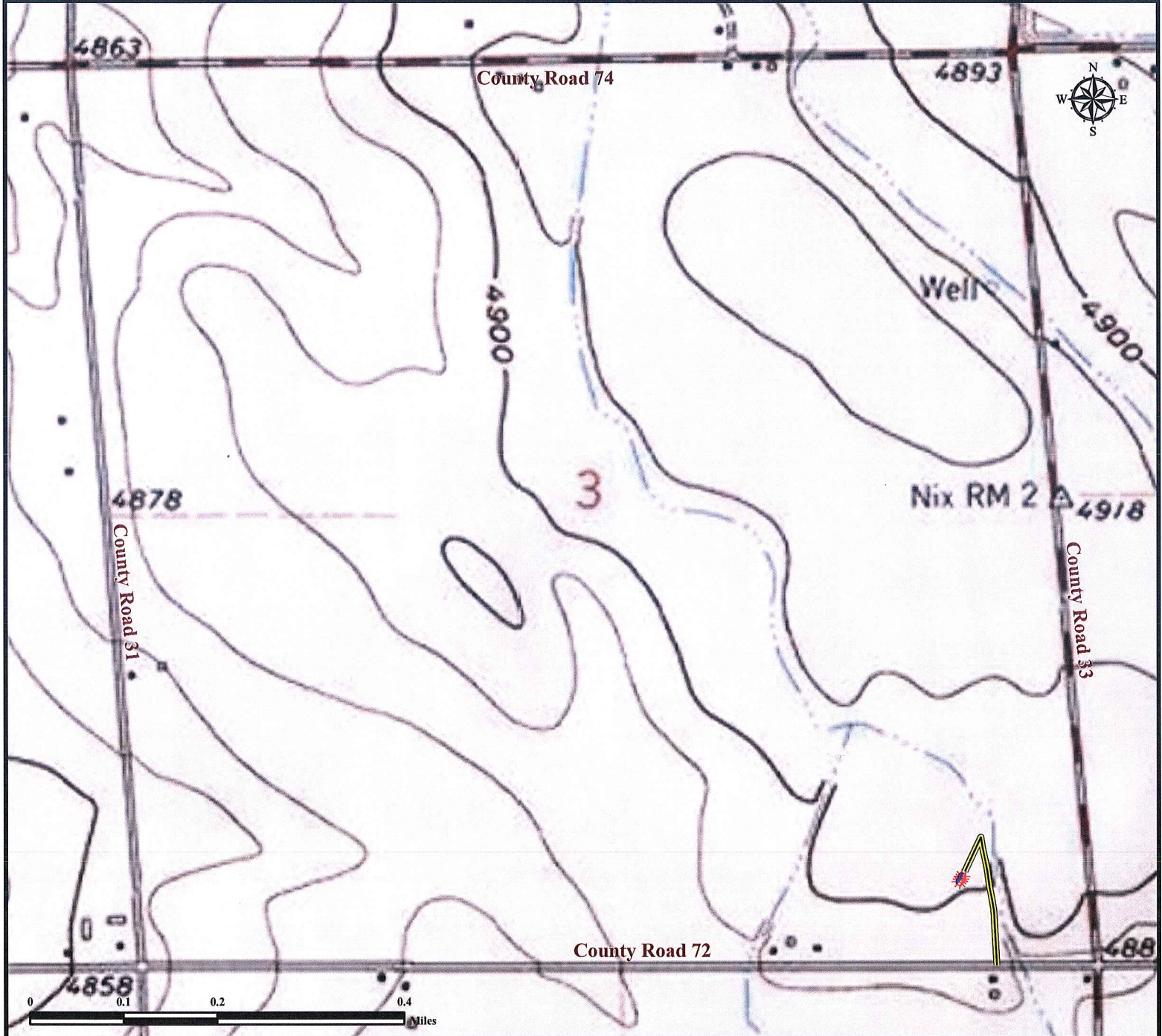


Access Road Exhibit

OPDYKE TRUST 43-3D

Multi Well Pad

SE¼ SE¼ SECTION 3, TOWNSHIP 6 NORTH, RANGE 66 WEST OF THE 6TH PRINCIPAL MERIDIAN



Proposed Access to OPDYKE TRUST 43-3D Pad: From the Junction of County Road 31 and County Road 72, head east approximately 0.90 miles and turn left onto existing private road. Continue on private road approximately 0.13 miles and turn left to well location.

Legend

 Proposed Well
  Access Road

Reference Location

** All Measurements are Made from
 Reference Well OPDYKE TRUST 43-3D**
 LAT: 40.511323° LONG: -104.756685° (NAD 83)
 Elevation: 4900 Feet



Use our resources to find yours!
www.petro-fs.com
 (303) 928-7128

Field Date: 9/22/2010
 Drafting Date: 9/27/2010
 Drafter: DMM
 Checked By: BHF

Data Sources:
 - Topo courtesy USGS

Prepared for:

