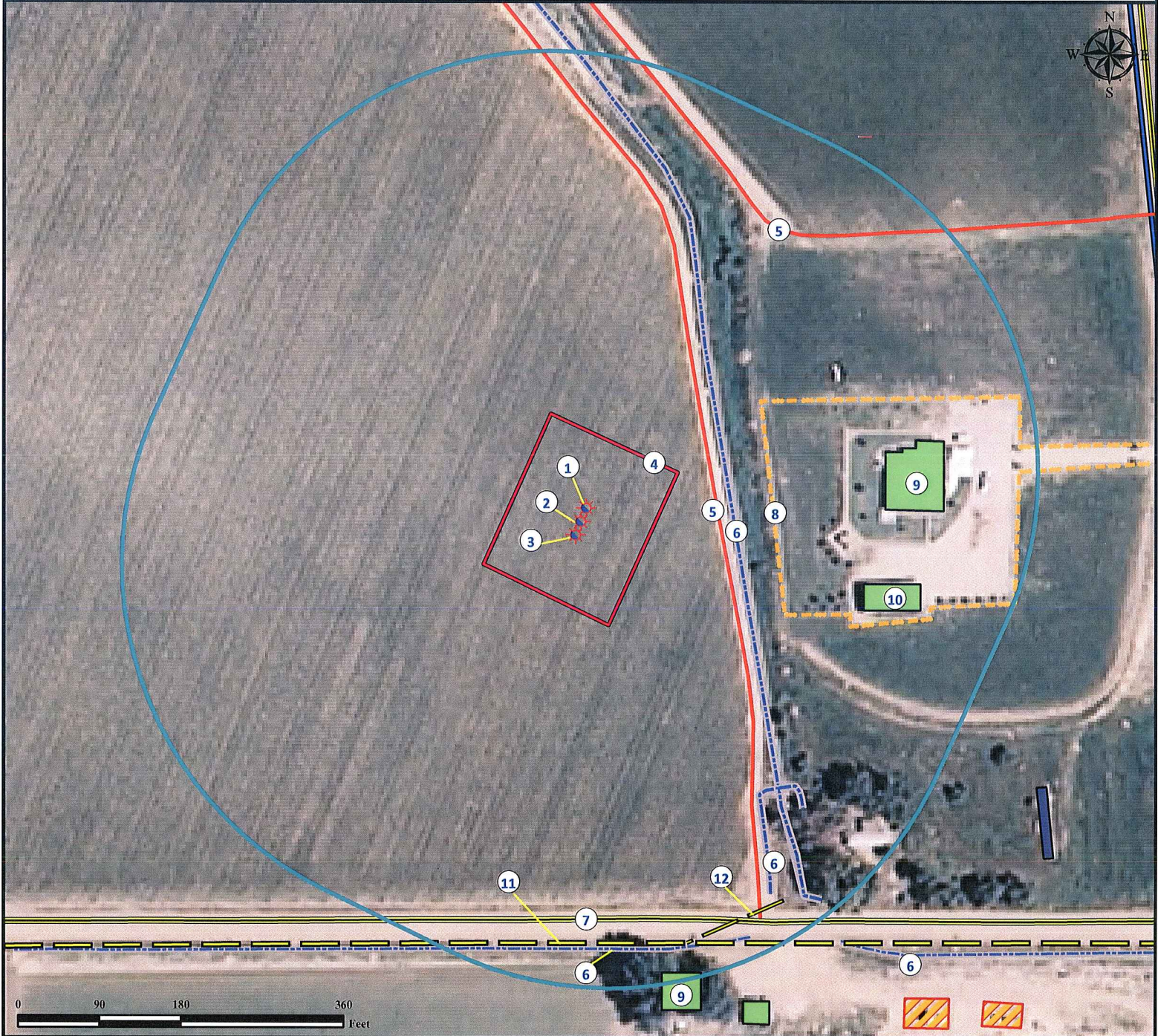


# Location Drawing

## OPDYKE TRUST 43-3D

### Multi Well Pad

**SE¼ SE¼ SECTION 3, TOWNSHIP 6 NORTH, RANGE 66 WEST OF THE 6TH PRINCIPAL MERIDIAN**



- |  |  |
|--|--|
| <ol style="list-style-type: none"> <li>1. Proposed Well MESBERGEN 44-3.</li> <li>2. Proposed Well OPDYKE TRUST 43-3D.</li> <li>3. Proposed Well MESBERGEN 45-3D.</li> <li>4. Operational Disturbance Area.</li> <li>5. Private Roads are ±154' E and ±389' NE.</li> <li>6. Concrete Walled Irrigation Ditches (nonbermed) are ±171' E, ±363' SE, ±473' S, and ±549' SE.</li> </ol> | <ol style="list-style-type: none"> <li>7. County Road 72 is ±440' S.</li> <li>8. Fence is ±215' E.</li> <li>9. Occupied Residences are ±339' E and ±507' SE.</li> <li>10. Outbuilding is ±323' SE.</li> <li>11. Overhead Power Line is ±468' S.</li> <li>12. Minor Overhead Power Line is ±473' SE.</li> </ol> |
|--|--|

<b>Legend</b> Proposed Well 400' Radius Operational Disturbance Area	Facilities Building/Residence Oil & Gas Equipment Public Road	Fence Concrete Irrigation Ditch Private Road Overhead Power Line
---	--	---

**Reference Location**  
 \*\* All Measurements are Made from  
 Reference Well OPDYKE TRUST 43-3D\*\*  
 LAT: 40.511323° LONG: -104.756685° (NAD 83)  
 Elevation: 4900 Feet  
 Surface Use: Cropland