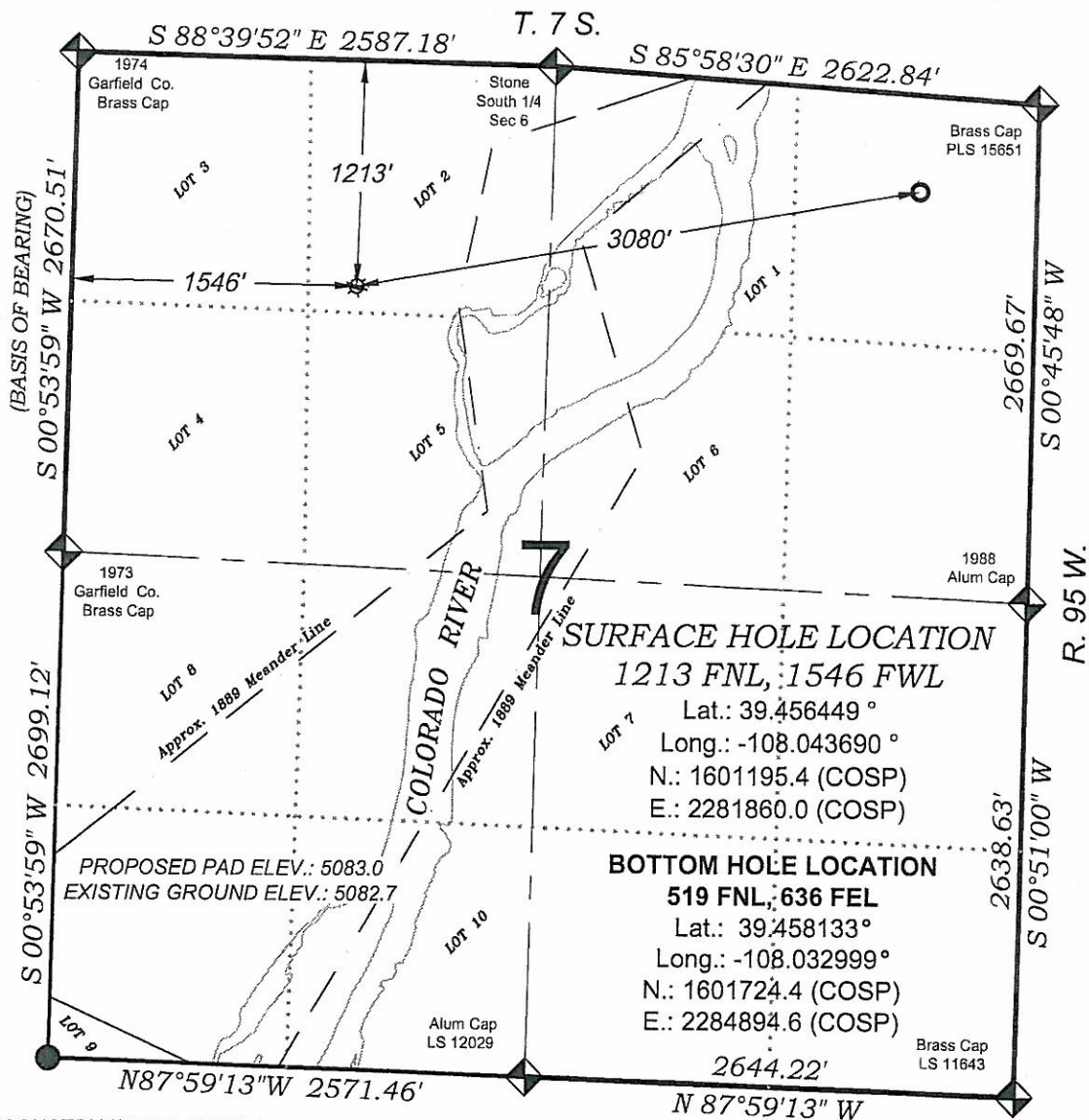


T & T and Assoc. LTD. PA 341-7



SEE CONSTRUCTION LAYOUT
PLAT FOR VISIBLE IMPROVEMENTS
WITHIN 400' OF THIS LOCATION



- LEGEND -

FIELD LOCATED SECTION
MONUMENTS AS DESCRIBED

FIELD SURVEYED
WELL LOCATION

CALCULATED BOTTOM
HOLE LOCATION

CALCULATED SECTION
CORNER LOCATION

SURVEYORS STATEMENT

I, MICHAEL J. LANGHORNE, A REGISTERED LAND SURVEYOR IN THE
STATE OF COLORADO DO HEREBY CERTIFY THAT THE SURVEY SHOWN
HEREON WAS PREPARED UNDER MY DIRECT SUPERVISION AND HAS
BEEN STAKED ON THE GROUND AS SHOWN ON THE PLAT AND
CHECKING THAT THIS MAP IS A TRUE REPRESENTATION THEREOF.

Michael Langhorne

MICHAEL J. LANGHORNE, COLORADO REGISTRATION NO. 36572

FOR AND ON BEHALF OF

BOOKCLIFF SURVEY SERVICES, INC.

REFERENCES

- 1) DEPENDENT RESURVEY T. 7 S., R. 95 W., 6th P.M. (BLM PLAT)
- 2) U.S.G.S. QUAD: PARACHUTE, CO

REV.: 3/23/10

SURVEY DATE: 3/30/09
MAP DATE: 3/1/10
SCALE: 1" = 1000'
PLAT: 1 of 9
PROJECT: Williams

NOTES

- 1) ELEVATIONS BASED ON N.A.V.D. 1988 PUBLISHED COORDINATES.
- 2) LATITUDES AND LONGITUDES ARE BASE ON NAD 83, PUBLISHED COORDINATES
- 3) STATE PLANE COORDINATES ARE BASED ON COLORADO CENTRAL ZONE, U.S. SURVEY FEET.
- 4) ELEVATION MASK SET TO 15"
- 5) GPS OPERATOR J. KIRKPATRICK, OBSERVED A PDOP OF LESS THAN 6.0
- 6) SURFACE AND BOTTOM HOLE LOCATIONS ARE MEASURED 90° FROM SECTION LINES.

WELL LOCATION PLAT Prepared for:
Williams Williams Production, RMT

NE 1/4 NW 1/4, LOT 2, SECTION 7
T. 7 S., R. 95 W. of the 6th P.M.
GARFIELD COUNTY, COLORADO

136 East Third Street,
Rifle, Colorado 81650
Ph: (970) 635-1330
Fax: (970) 635-2773

BOOKCLIFF
Survey Services, Inc.