

---

# **BILL BARRETT CORPORATION E-BILL**

---

**Miller 33A-36-692  
PICEANCE  
Garfield County , Colorado**

**Cement Production Casing**  
**10-Nov-2009**

**Post Job Summary**

## The Road to Excellence Starts with Safety

Sold To #: 343492	Ship To #: 2730818	Quote #:	Sales Order #: 6992949
Customer: BILL BARRETT CORPORATION E-BILL	Customer Rep: Hansen, Todd		
Well Name: Miller	Well #: 33A-36-692	API/UWI #:	
Field: PICEANCE	City (SAP): SILT	County/Parish: Garfield	State: Colorado
Contractor: Patterson 506	Rig/Platform Name/Num: PATTERSON 506		
Job Purpose: Cement Production Casing			
Well Type: Development Well	Job Type: Cement Production Casing		
Sales Person: METLI, MARSHALL	Srv Supervisor: DANIEL, EVERETT	MBU ID Emp #:	337325

## Job Personnel

HES Emp Name	Exp Hrs	Emp #	HES Emp Name	Exp Hrs	Emp #	HES Emp Name	Exp Hrs	Emp #
DANIEL, EVERETT Dean		337325	HAYES, JESSE Doug		403601	MUHLESTEIN, RYAN Herrick		453609
SALAZAR, PAUL Omar		445614						

## Equipment

HES Unit #	Distance-1 way	HES Unit #	Distance-1 way	HES Unit #	Distance-1 way	HES Unit #	Distance-1 way
10000394	120 mile	10616651C	120 mile	10867322	120 mile	10951246	120 mile
10995025	120 mile	10998512	120 mile	6543	120 mile		

## Job Hours

Date	On Location Hours	Operating Hours	Date	On Location Hours	Operating Hours	Date	On Location Hours	Operating Hours

TOTAL	Total is the sum of each column separately							
-------	--	--	--	--	--	--	--	--

## Job

Formation Name					Date	Time	Time Zone
Formation Depth (MD)	Top		Bottom		Called Out	10 - Nov - 2009	04:00 CST
Form Type		BHST			On Location	10 - Nov - 2009	08:30 MST
Job depth MD	7178. m	Job Depth TVD	7178. m		Job Started	10 - Nov - 2009	11:02 MST
Water Depth		Wk Ht Above Floor	4. m		Job Completed	10 - Nov - 2009	12:49 MST
Perforation Depth (MD)	From		To		Departed Loc	10 - Nov - 2009	14:30 MST

## Well Data

Description	New / Used	Max pressure MPa	Size mm	ID mm	Weight kg/m	Thread	Grade	Top MD m	Bottom MD m	Top TVD m	Bottom TVD m
-------------	------------	------------------	---------	-------	-------------	--------	-------	----------	-------------	-----------	--------------

Sales/Rental/3<sup>rd</sup> Party (HES)

Description	Qty	Qty uom	Depth	Supplier
PLUG,CMTG,TOP,4 1/2,HWE,3.65 MIN/4.14 MA	1	EA		
PORT. DAS W/CEMWIN;ACQUIRE W/HES, ZI	1	JOB		
ADC (AUTO DENSITY CTRL) SYS, /JOB,ZI	1	JOB		

## Tools and Accessories

Type	Size	Qty	Make	Depth	Type	Size	Qty	Make	Depth	Type	Size	Qty	Make
Guide Shoe					Packer					Top Plug			
Float Shoe					Bridge Plug					Bottom Plug			
Float Collar					Retainer					SSR plug set			
Insert Float										Plug Container			
Stage Tool										Centralizers			

## Miscellaneous Materials

Gelling Agt	Conc	Surfactant	Conc	Acid Type	Qty	Conc	%
Treatment Fld	Conc	Inhibitor	Conc	Sand Type	Size		Qty

Fluid Data									
Stage/Plug #: 1									
Fluid #	Stage Type	Fluid Name	Qty	Qty uom	Mixing Density kg/m3	Yield m3/sk	Mix Fluid m3/tonne	Rate m3/min	Total Mix Fluid m3/tonne
1	Water Spacer			bbl	8.33	.0	.0	.0	
2	Super Flush			bbl	10.4	.0	.0	.0	
3	Water Spacer			bbl	8.33	.0	.0	.0	
4	Tail Cement-	HALCEM (TM) SYSTEM (452986)		sacks	13.1	1.47	6.41		
7.217 Gal		FRESH WATER							
5	Clayfix Displacement			bbl	.	.0	.0	.0	
Calculated Values		Pressures		Volumes					
Displacement		Shut In: Instant		Lost Returns		Cement Slurry		Pad	
Top Of Cement		5 Min		Cement Returns		Actual Displacement		Treatment	
Frac Gradient		15 Min		Spacers		Load and Breakdown		Total Job	
Rates									
Circulating		Mixing		Displacement		Avg. Job			
Cement Left In Pipe	Amount	0 ft	Reason	Shoe Joint					
Frac Ring # 1 @	ID	Frac ring # 2 @	ID	Frac Ring # 3 @	ID	Frac Ring # 4 @	ID		
The Information Stated Herein Is Correct				Customer Representative Signature					

*The Road to Excellence Starts with Safety*

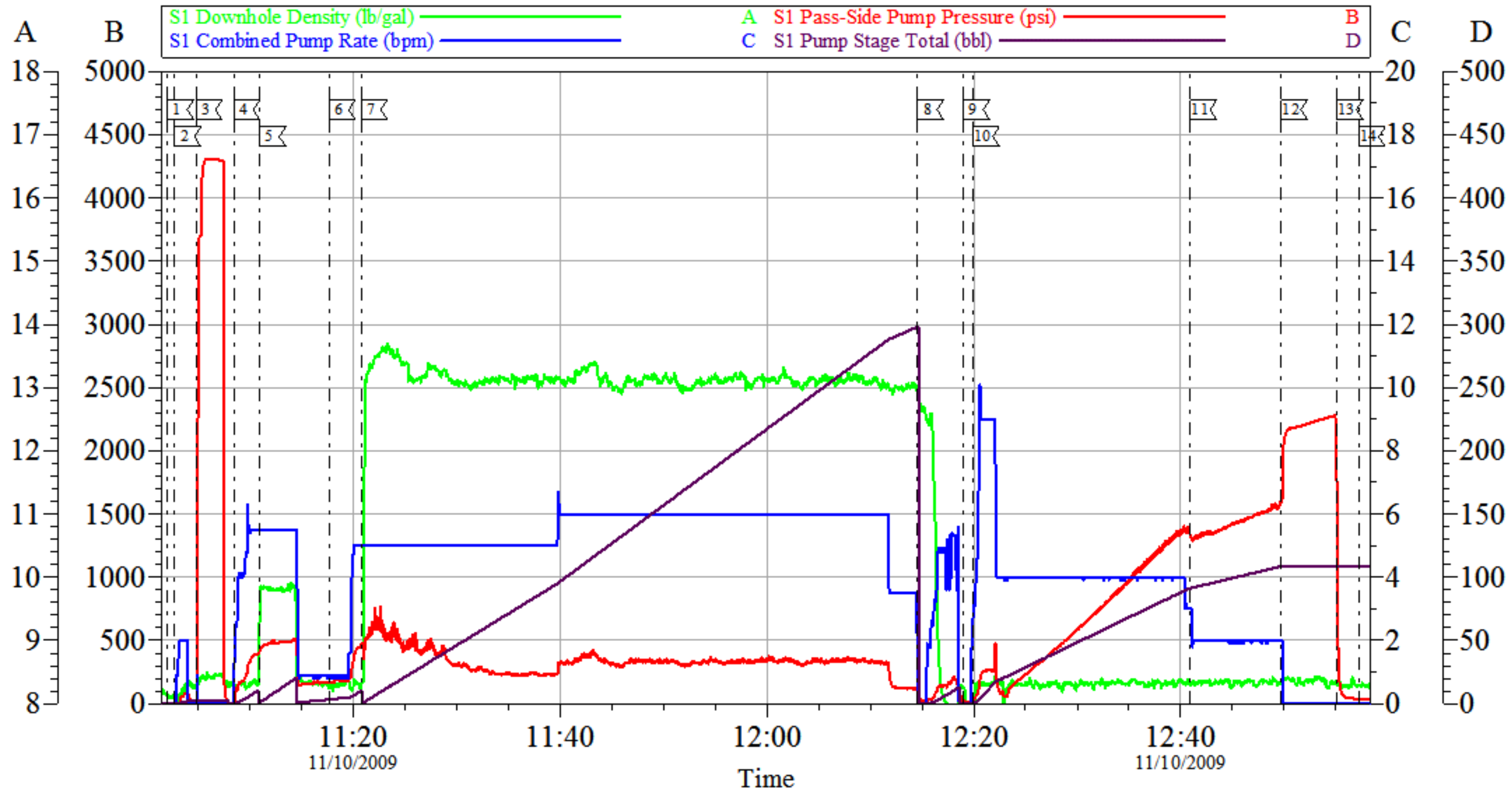
<b>Sold To #:</b> 343492	<b>Ship To #:</b> 2730818	<b>Quote #:</b>	<b>Sales Order #:</b> 6992949
<b>Customer:</b> BILL BARRETT CORPORATION E-BILL		<b>Customer Rep:</b> Hansen, Todd	
<b>Well Name:</b> Miller	<b>Well #:</b> 33A-36-692	<b>API/UWI #:</b>	
<b>Field:</b> PICEANCE	<b>City (SAP):</b> SILT	<b>County/Parish:</b> Garfield	<b>State:</b> Colorado
<b>Legal Description:</b>			
<b>Lat:</b> N 0 deg. OR N 0 deg. 0 min. 0 secs.		<b>Long:</b> E 0 deg. OR E 0 deg. 0 min. 0 secs.	
<b>Contractor:</b> Patterson 506		<b>Rig/Platform Name/Num:</b> PATTERSON 506	
<b>Job Purpose:</b> Cement Production Casing			<b>Ticket Amount:</b>
<b>Well Type:</b> Development Well		<b>Job Type:</b> Cement Production Casing	
<b>Sales Person:</b> METLI, MARSHALL		<b>Srvc Supervisor:</b> DANIEL, EVERETT	<b>MBU ID Emp #:</b> 337325

Activity Description	Date/Time	Cht #	Rate m3/min	Volume m3		Pressure MPa		Comments
				Stage	Total	Tubing	Casing	
Call Out	11/10/2009 04:00							
Depart Yard Safety Meeting	11/10/2009 06:30							
Depart from Service Center or Other Site	11/10/2009 06:45							
Arrive at Location from Service Center	11/10/2009 08:30							Arrive .5 hrs. early
Assessment Of Location Safety Meeting	11/10/2009 08:35							
Comment	11/10/2009 08:45							Consult with Co. Rep. Verify materials and equipment on location including cement & H2O totals
Safety Meeting - Pre Rig-Up	11/10/2009 08:55							
Rig-Up Equipment	11/10/2009 09:00							
Rig-Up Completed	11/10/2009 10:00							
Safety Meeting - Pre Job	11/10/2009 10:45							
Start Job	11/10/2009 11:02							
Prime Pumps	11/10/2009 11:02		2	2			50.0	Fresh Water
Test Lines	11/10/2009 11:04		0.5	0.1			4300.0	Fresh Water
Pump Spacer 1	11/10/2009 11:08		5	10			260.0	Fresh Water
Pump Spacer 2	11/10/2009 11:10		5	20			435.0	Super Flush 101
Pump Spacer 1	11/10/2009 11:17		5	10			400.0	Fresh Water

Activity Description	Date/Time	Cht #	Rate m3/min	Volume m3		Pressure MPa		Comments
				Stage	Total	Tubing	Casing	
Pump Tail Cement	11/10/2009 11:20		6	261.8			570.0	1075 sks. HALCEM@ 13.1#, 1.47 Yield, 6.41 H2O req.
Shutdown	11/10/2009 12:14							
Clean Lines	11/10/2009 12:14							
Drop Top Plug	11/10/2009 12:19							
Pump Displacement	11/10/2009 12:19		4	109.3			1218.0	Clay Fix Displacement
Slow Rate	11/10/2009 12:40		2	90			1550.0	Lost Returns @ 89 bbls. gone
Bump Plug	11/10/2009 12:49		2	109.3			2167.0	Bumped plug @ calculated displacement
Check Floats	11/10/2009 12:55							Floats Held
End Job	11/10/2009 12:57							
Safety Meeting - Pre Rig-Down	11/10/2009 13:00							
Rig-Down Equipment	11/10/2009 13:15							
Rig-Down Completed	11/10/2009 13:45							
Safety Meeting - Departing Location	11/10/2009 14:00							
Depart Location for Service Center or Other Site	11/10/2009 14:30							

# BILL BARRETT

## 4 1/2" PRODUCTION



Customer: BILL BARRETT  
Well Description: 33A-36-692  
Company Rep: TODD HANSEN

Job Date: 10-Nov-2009  
Job Type: PRODUCTION  
Cement Supervisor: DEAN DANIEL

Sales Order #: 6992949  
ADC Used: YES  
Elite #/Operator: 4/Ryan MUHLESTEIN

OptiCem v6.4.4  
10-Nov-09 13:09