

---

# **BILL BARRETT CORPORATION E-BILL**

---

**KAUFMAN 23D-25-692  
MAMM CREEK  
Garfield County , Colorado**

**Cement Surface Casing**  
**12-Oct-2009**

**Post Job Report**

## The Road to Excellence Starts with Safety

<b>Sold To #:</b> 343492		<b>Ship To #:</b> 2748403		<b>Quote #:</b>		<b>Sales Order #:</b> 6942093	
<b>Customer:</b> BILL BARRETT CORPORATION E-BILL				<b>Customer Rep:</b> South, Jodi			
<b>Well Name:</b> KAUFMAN			<b>Well #:</b> 23D-25-692			<b>API/UWI #:</b> 05-045-18641	
<b>Field:</b> MAMM CREEK		<b>City (SAP):</b> SILT		<b>County/Parish:</b> Garfield		<b>State:</b> Colorado	
<b>Lat:</b> N 39.497 deg. OR N 39 deg. 29 min. 49.942 secs.				<b>Long:</b> W 107.618 deg. OR W -108 deg. 22 min. 54.602 secs.			
<b>Contractor:</b> BARRETT			<b>Rig/Platform Name/Num:</b> PETRO PLUS				
<b>Job Purpose:</b> Cement Surface Casing							
<b>Well Type:</b> Development Well				<b>Job Type:</b> Cement Surface Casing			
<b>Sales Person:</b> METLI, MARSHALL			<b>Srvc Supervisor:</b> WYLEY, KEVIN			<b>MBU ID Emp #:</b> 339437	
<b>Job Personnel</b>							
<b>HES Emp Name</b>	<b>Exp Hrs</b>	<b>Emp #</b>	<b>HES Emp Name</b>	<b>Exp Hrs</b>	<b>Emp #</b>	<b>HES Emp Name</b>	<b>Exp Hrs</b>
ANDERSON, ADAM S	3	456683	OLDS, RYAN John	3	418018	WYLEY, KEVIN Todd	3
<b>Equipment</b>							
<b>HES Unit #</b>	<b>Distance-1 way</b>	<b>HES Unit #</b>	<b>Distance-1 way</b>	<b>HES Unit #</b>	<b>Distance-1 way</b>	<b>HES Unit #</b>	<b>Distance-1 way</b>
10744648C	120 mile	10784064	120 mile	10829467	120 mile	10973571	120 mile
10998508	120 mile						
<b>Job Hours</b>							
<b>Date</b>	<b>On Location Hours</b>	<b>Operating Hours</b>	<b>Date</b>	<b>On Location Hours</b>	<b>Operating Hours</b>	<b>Date</b>	<b>On Location Hours</b>
10/11/09	3	1					
<b>TOTAL</b>			<i>Total is the sum of each column separately</i>				
<b>Job</b>				<b>Job Times</b>			
<b>Formation Name</b>				<b>Date</b>	<b>Time</b>	<b>Time Zone</b>	
<b>Formation Depth (MD)</b>	<b>Top</b>	<b>Bottom</b>		<b>Called Out</b>			
<b>Form Type</b>	BHST			<b>On Location</b>			
<b>Job depth MD</b>	785. ft	<b>Job Depth TVD</b>	785. ft	<b>Job Started</b>	12 - Oct - 2009	22:48	MST
<b>Water Depth</b>		<b>Wk Ht Above Floor</b>	3. ft	<b>Job Completed</b>	12 - Oct - 2009	23:33	MST
<b>Perforation Depth (MD)</b>	<b>From</b>	<b>To</b>		<b>Departed Loc</b>			
<b>Well Data</b>							
<b>Description</b>	<b>New / Used</b>	<b>Max pressure psig</b>	<b>Size in</b>	<b>ID in</b>	<b>Weight lbm/ft</b>	<b>Thread</b>	<b>Grade</b>
							<b>Top MD ft</b>
							<b>Bottom MD ft</b>
							<b>Top TVD ft</b>
							<b>Bottom TVD ft</b>
<b>Sales/Rental/3<sup>rd</sup> Party (HES)</b>							
<b>Description</b>				<b>Qty</b>	<b>Qty uom</b>	<b>Depth</b>	<b>Supplier</b>
PLUG,CMTG,TOP,9 5/8,HWE,8.16 MIN/9.06 MA				1	EA		
KIT,HALL WELD-A				2	EA		
CENTRALIZER-9-5/8"-CSG-12 1/4"-HINGED				6	EA		
SHOE,GID,9-5/8 8RD				1	EA		
CLR,FLT,9-5/8 8RD 29.3-40PPF,2-3/4				1	EA		
COLLAR-STOP-9 5/8"-FRICTION-HINGED				1	EA		
<b>Tools and Accessories</b>							
<b>Type</b>	<b>Size</b>	<b>Qty</b>	<b>Make</b>	<b>Depth</b>	<b>Type</b>	<b>Size</b>	<b>Qty</b>
<b>Guide Shoe</b>					<b>Packer</b>		
<b>Float Shoe</b>					<b>Bridge Plug</b>		
<b>Float Collar</b>					<b>Retainer</b>		
<b>Insert Float</b>							
<b>Stage Tool</b>							
					<b>Top Plug</b>	9 5/8	1
					<b>Bottom Plug</b>		
					<b>SSR plug set</b>		
					<b>Plug Container</b>	9 5/8	1
					<b>Centralizers</b>		
<b>Miscellaneous Materials</b>							
<b>Gelling Agt</b>		<b>Conc</b>		<b>Surfactant</b>		<b>Conc</b>	
<b>Treatment Fld</b>		<b>Conc</b>		<b>Inhibitor</b>		<b>Conc</b>	
					<b>Acid Type</b>		<b>Qty</b>
					<b>Sand Type</b>		<b>Conc %</b>
						<b>Size</b>	<b>Qty</b>

Fluid Data										
Stage/Plug #: 1										
Fluid #	Stage Type	Fluid Name	Qty	Qty uom	Mixing Density lbm/gal	Yield ft <sup>3</sup> /sk	Mix Fluid Gal/sk	Rate bbl/min	Total Mix Fluid Gal/sk	
1	WATER SPACER	FRESH WATER	40.00	bbl	.	.0	.0	5		
2	Lead Cement	VERSACEM (TM) SYSTEM (452010)	120.0	sacks	12.3	2.37	13.76	5	13.42	
		13.418 Gal	FRESH WATER							
3	Tail Cement	SWIFTCEM (TM) SYSTEM (452990)	120.0	sacks	14.2	1.43	6.88	5	6.72	
		6.715 Gal	FRESH WATER							
4	DISPLACEMENT	FRESH WATER	57.00	bbl	.	.0	.0	5		
Calculated Values		Pressures		Volumes						
Displacement	56.4	Shut In: Instant		Lost Returns		Cement Slurry	82	Pad		
Top Of Cement		5 Min		Cement Returns	20	Actual Displacement	56.4	Treatment		
Frac Gradient		15 Min		Spacers	40	Load and Breakdown		Total Job		
Rates										
Circulating		Mixing	5	Displacement	5	Avg. Job	5			
Cement Left In Pipe	Amount	43.2 ft	Reason	Shoe Joint						
Frac Ring # 1 @	ID	Frac ring # 2 @	ID	Frac Ring # 3 @	ID	Frac Ring # 4 @	ID			
The Information Stated Herein Is Correct				Customer Representative Signature						

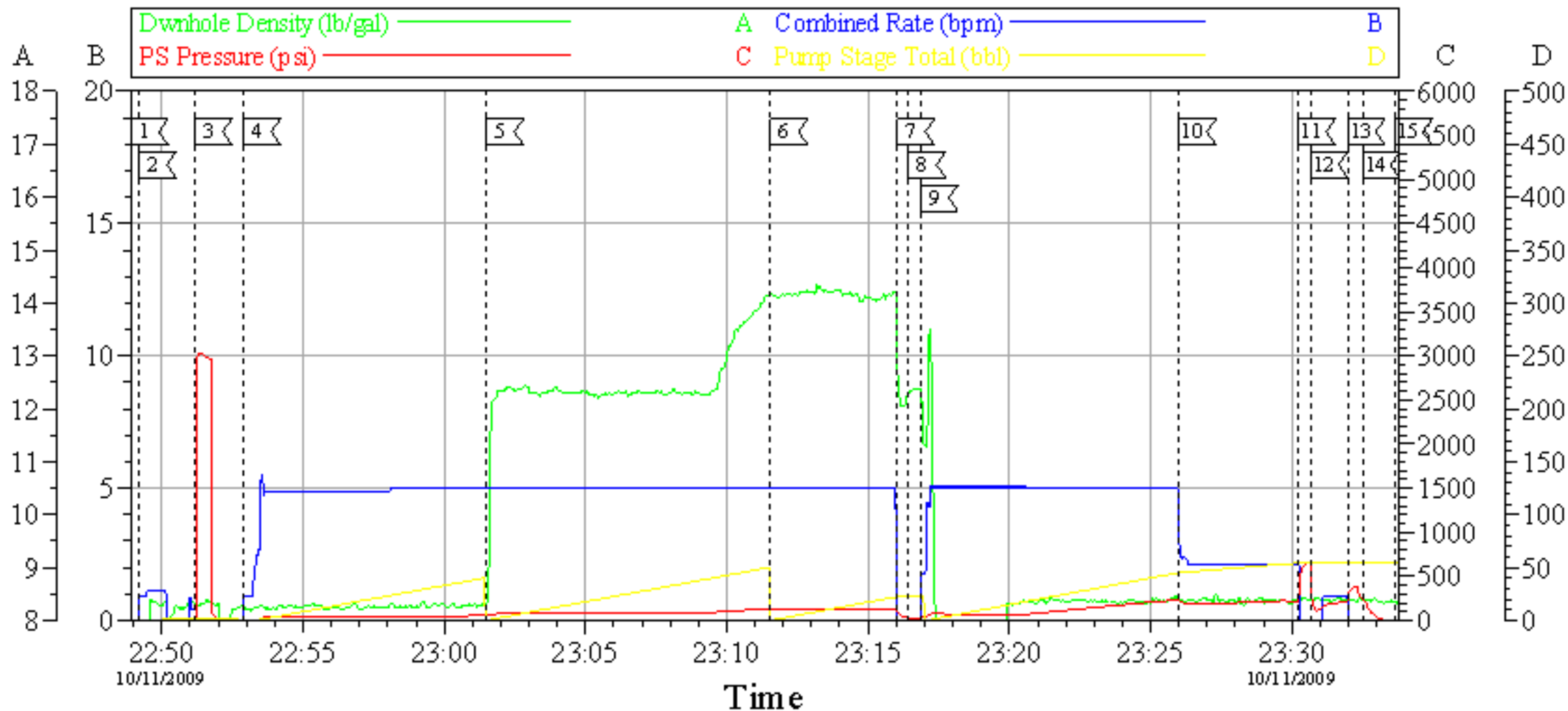
*The Road to Excellence Starts with Safety*

<b>Sold To #:</b> 343492		<b>Ship To #:</b> 2748403		<b>Quote #:</b>		<b>Sales Order #:</b> 6942093	
<b>Customer:</b> BILL BARRETT CORPORATION E-BILL				<b>Customer Rep:</b> South, Jodi			
<b>Well Name:</b> KAUFMAN			<b>Well #:</b> 23D-25-692			<b>API/UWI #:</b> 05-045-18641	
<b>Field:</b> MAMM CREEK		<b>City (SAP):</b> SILT		<b>County/Parish:</b> Garfield			<b>State:</b> Colorado
<b>Legal Description:</b>							
<b>Lat:</b> N 39.497 deg. OR N 39 deg. 29 min. 49.942 secs.				<b>Long:</b> W 107.618 deg. OR W -108 deg. 22 min. 54.602 secs.			
<b>Contractor:</b> BARRETT			<b>Rig/Platform Name/Num:</b> PETRO PLUS				
<b>Job Purpose:</b> Cement Surface Casing						<b>Ticket Amount:</b>	
<b>Well Type:</b> Development Well			<b>Job Type:</b> Cement Surface Casing				
<b>Sales Person:</b> METLI, MARSHALL			<b>Srv Supervisor:</b> WYLEY, KEVIN			<b>MBU ID Emp #:</b> 339437	

Activity Description	Date/Time	Cht #	Rate bbl/min	Volume bbl		Pressure psig		Comments
				Stage	Total	Tubing	Casing	
Arrive At Loc	10/11/2009 21:30							ALREADY ON LOCATION FROM PREVIOUS WELL
Assessment Of Location Safety Meeting	10/11/2009 21:40							ASSESSMENT OF LOCATION INVOLVING THE ENTIRE CMT CREW
Rig-Up Equipment	10/11/2009 22:00							
Pre-Job Safety Meeting	10/11/2009 22:40							SAFETY MEETING INVOLVING EVERYONE ON LOCATION
Start Job	10/11/2009 22:48							
Other	10/11/2009 22:49		1	1			5.0	PRIME LINES WITH FRESH WATER
Test Lines	10/11/2009 22:51						3000.0	PSI TEST GOOD
Pump Spacer	10/11/2009 22:52		5	40			50.0	FRESH WATER SPACER
Pump Lead Cement	10/11/2009 23:01		5	50.9			124.0	120 SKS, 12.3 PPG, 2.38 FT3/SK, 13.75 GAL/SK
Pump Tail Cement	10/11/2009 23:11		5	30.6			135.0	120 SKS, 14.2 PPG, 1.43 FT3/SK, 6.88 GAL/SK
Shutdown	10/11/2009 23:16							DROP TOP PLUG
Drop Top Plug	10/11/2009 23:16							PLUG LEFT THE CONTAINER
Pump Displacement	10/11/2009 23:16		2	56.4			235.0	FRESH WATER DISPLACEMENT

Activity Description	Date/Time	Cht #	Rate bbl/ min	Volume bbl		Pressure psig		Comments
				Stage	Total	Tubing	Casing	
Slow Rate	10/11/2009 23:26		2	46			194.0	SLOW RATE THE LAST 10 BBLS OF DISPLACEMENT TO LAND THE PLUG
Check Floats	10/11/2009 23:30							FLOATS DID NOT HOLD, PRESSURED BACK UP TO PSI TO LAND AND CLOSED IN WELL
Bump Plug	10/11/2009 23:30		2	56.4			650.0	PLUG LANDED
End Job	10/11/2009 23:33							GOOD CIRCULATION ONCE THE WELL WAS FULL OF FLUID, 20 BBLS OF CEMENT TO SURFACE
Pre-Rig Down Safety Meeting	10/11/2009 23:40							SAFETY MEETING INVOLVING THE ENTIRE CMT CREW
Rig-Down Equipment	10/11/2009 23:45							
Comment	10/11/2009 23:47							THANK YOU FOR USING HALLIBURTON, KEVIN WYLEY AND CREW

# 9 5/8 SURFACE



Event Log			
1	START JOB	22:48:54	2
2	PRIME LINES	22:49:12	3
3	TEST LINES	22:51:10	4
4	WATERSPACER	22:52:53	5
5	LEAD CEMENT	23:01:30	6
6	TAIL CEMENT	23:11:33	7
7	SHUTDOWN	23:16:02	8
8	DROP TOP PLUG	23:16:25	9
9	DISPLACEMENT	23:16:52	10
10	SLOWRATE	23:26:00	11
11	LAND PLUG	23:30:13	12
12	CHECK FLOATS	23:30:40	13
13	LAND PLUG	23:31:59	14
14	CLOSE IN	23:32:30	15
15	END JOB	23:33:38	

Customer: BILL BARRETT  
Well Desc: KAUFMAN 23D-25-692  
ADC USED YES

Job Date: 10/11/09  
CO REP JODI SOUTH  
TRUCK # ELITE 06

Ticket #: 6942093  
SUPERVISOR KEVIN WYLEY  
OPERATOR RYAN OLDS

OptiCem RT v2.5.2  
11-Oct-09 23:53