

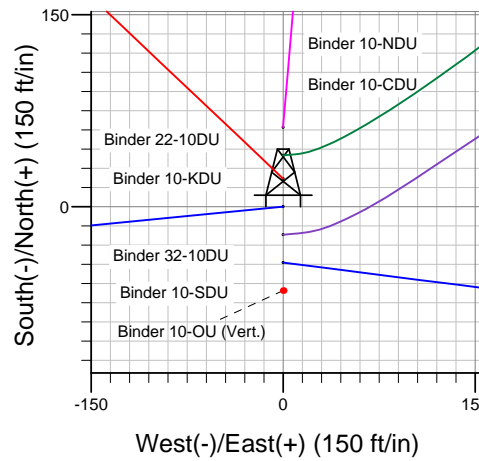
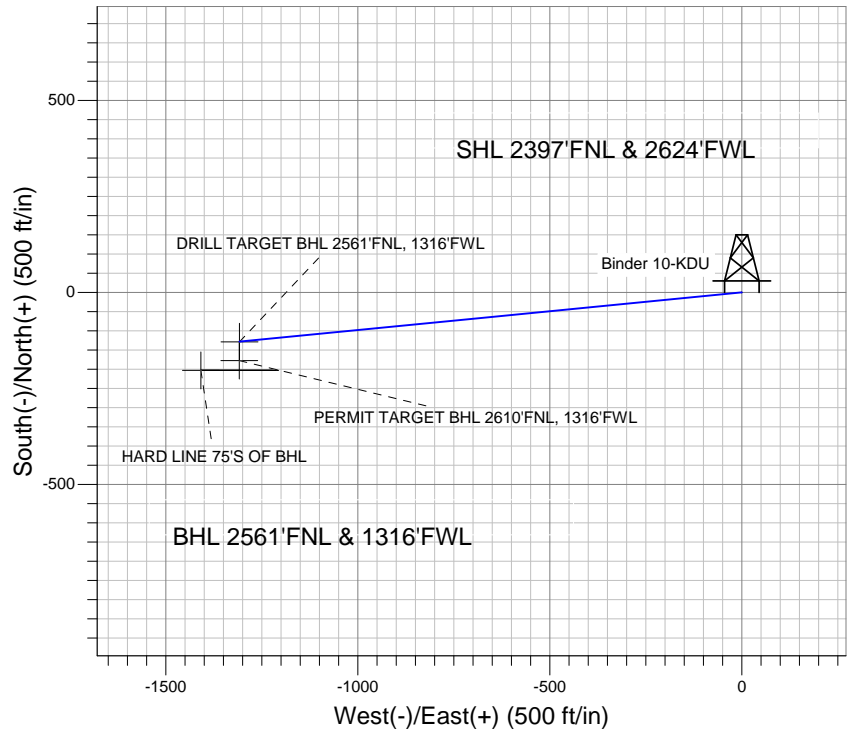
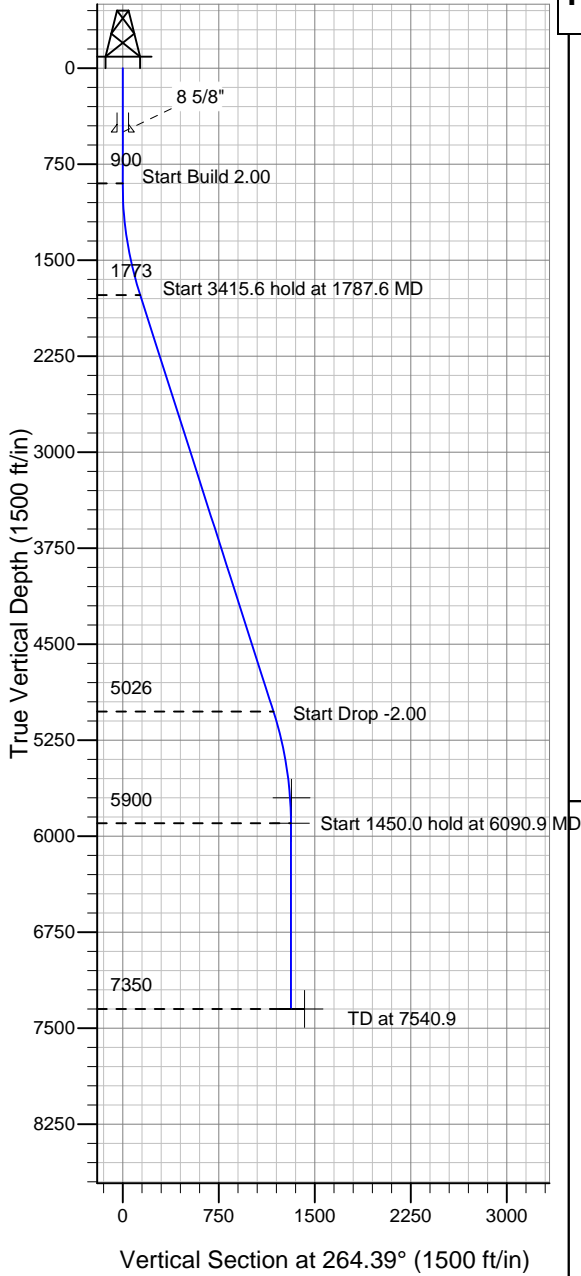
Well Name: **Binder 10-KDU**

Surface Location: Binder 10-NDU Pad Sec.10-T4N-R67W
 North American Datum 1983, US State Plane 1983 Colorado Northern Zone
 Ground Elevation: 4780.0

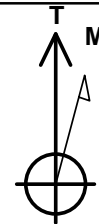
+N/-S	+E/-W	Northing	Easting	Latitude	Longitude	Slot
0.0	0.0	1362773.43	3173643.01	40° 19' 39.144 N	104° 52' 37.884 W	

Original Well EleWELL @ 4793.0ft (Original Well Elev)

PETROLEUM DEVELOPMENT CORP Weld County CO



Binder 10-NDU Pad Sec.10-T4N-R67W
 Binder 10-KDU
 Plan #1 (9-23-10)
 15:04, September 24 2010



Azimuths to True North
 Magnetic North: 9.02°
 Magnetic Field
 Strength: 53157.8snT
 Dip Angle: 67.00°
 Date: 9/24/2010
 Model: IGRF2010

WELLBORE TARGET DETAILS (LAT/LONG)

Name	TVD	+N/-S	+E/-W	Latitude	Longitude	Shape
PERMIT TARGET BHL 2610'FNL, 1316'FWL	5700.0	-177.5	-1308.0	40° 19' 37.389 N	104° 52' 54.772 W	Point
DRILL TARGET BHL 2561'FNL, 1316'FWL	5900.0	-128.5	-1308.0	40° 19' 37.874 N	104° 52' 54.772 W	Point
HARD LINE 75'S OF BHL	7350.0	-203.5	-1408.0	40° 19' 37.133 N	104° 52' 56.063 W	Polygon

SECTION DETAILS

Sec	MD	Inc	Azi	TVD	+N/-S	+E/-W	DLeg	TFace	VSec	Target
1	0.0	0.00	0.00	0.0	0.0	0.0	0.00	0.00	0.0	
2	900.0	0.00	0.00	900.0	0.0	0.0	0.00	0.00	0.0	
3	1787.6	17.75	264.39	1773.5	-13.3	-135.8	2.00	264.39	136.4	
4	5203.3	17.75	264.39	5026.5	-115.2	-1172.2	0.00	0.00	1177.9	
5	6090.9	0.00	0.00	5900.0	-128.5	-1308.0	2.00	180.00	1314.3	DRILL TARGET BHL 2561'FNL, 1316'FWL
6	7540.9	0.00	0.00	7350.0	-128.5	-1308.0	0.00	0.00	1314.3	