

BILL BARRETT CORPORATION E-BILL
DO NOT MAIL-1099 18TH ST,STE 2300W
DENVER, Colorado

GGU FED
GGU FED 32B-32-691

BARRETT/PETRO PLUS

Post Job Summary

Cement Surface Casing

Prepared for:
Date Prepared:
Version: 1

Service Supervisor: SMITH, DUSTIN

Submitted by:

HALLIBURTON

The Road to Excellence Starts with Safety

Sold To #: 343492	Ship To #: 2800909	Quote #:	Sales Order #: 7565564
Customer: BILL BARRETT CORPORATION E-BILL	Customer Rep: South, Jodi		
Well Name: GGU FED	Well #: 32B-32-691	API/UWI #:	
Field: PICEANCE	City (SAP):	County/Parish: Garfield	State: Colorado
Contractor: BARRETT	Rig/Platform Name/Num: PETRO PLUS		
Job Purpose: Cement Surface Casing			
Well Type: Development Well	Job Type: Cement Surface Casing		
Sales Person: METLI, MARSHALL	Srv Supervisor: SMITH, DUSTIN	MBU ID Emp #:	418015

Job Personnel

HES Emp Name	Exp Hrs	Emp #	HES Emp Name	Exp Hrs	Emp #	HES Emp Name	Exp Hrs	Emp #
LEIST, JAMES R	3	362787	SALAZAR, PAUL Omar	3	445614	SLAUGHTER, JESSE Dean	3	454315
SMITH, DUSTIN Michael	3	418015						

Equipment

HES Unit #	Distance-1 way	HES Unit #	Distance-1 way	HES Unit #	Distance-1 way	HES Unit #	Distance-1 way
10296152C	120 mile	10867094	120 mile	10897797	120 mile	10897925	120 mile
11259882	120 mile						

Job Hours

Date	On Location Hours	Operating Hours	Date	On Location Hours	Operating Hours	Date	On Location Hours	Operating Hours
08/18/10	4	2						

TOTAL Total is the sum of each column separately

Job

Formation Name	Formation Depth (MD)	Top	Bottom	Form Type	Job depth MD	Job Depth TVD	Water Depth	Wk Ht Above Floor	Perforation Depth (MD)	From	To
				BHST	807. ft	807. ft		. ft			

Job Times

Called Out	On Location	Job Started	Job Completed	Departed Loc
		18 - Aug - 2010	18 - Aug - 2010	
		11:32	12:09	
		MST	MST	

Well Data

Description	New / Used	Max pressure psig	Size in	ID in	Weight lbm/ft	Thread	Grade	Top MD ft	Bottom MD ft	Top TVD ft	Bottom TVD ft
-------------	------------	-------------------	---------	-------	---------------	--------	-------	-----------	--------------	------------	---------------

Sales/Rental/3rd Party (HES)

Description	Qty	Qty uom	Depth	Supplier
PLUG,CMTG, TOP, 9 5/8, HWE, 8.16 MIN/9.06 MA	1	EA		
R/A DENSOMETER W/CHART RECORDER, /JOB, ZI	1	JOB		
PORT. DATA ACQUIS. W/OPTICEM RT W/HES	1	EA		
ADC (AUTO DENSITY CTRL) SYS, /JOB, ZI	1	JOB		

Tools and Accessories

Type	Size	Qty	Make	Depth	Type	Size	Qty	Make	Depth	Type	Size	Qty	Make
Guide Shoe					Packer					Top Plug	9 5/8	1	
Float Shoe					Bridge Plug					Bottom Plug			
Float Collar					Retainer					SSR plug set			
Insert Float										Plug Container	9 5/8	1	
Stage Tool										Centralizers			

Miscellaneous Materials

Gelling Agt	Treatment Fld	Conc	Conc	Surfactant	Inhibitor	Conc	Conc	Acid Type	Sand Type	Qty	Size	Conc	Conc	%
-------------	---------------	------	------	------------	-----------	------	------	-----------	-----------	-----	------	------	------	---

Fluid Data

Stage/Plug #: 1

Fluid #	Stage Type	Fluid Name	Qty	Qty uom	Mixing Density lbm/gal	Yield ft ³ /sk	Mix Fluid Gal/sk	Rate bbl/min	Total Mix Fluid Gal/sk
1	WATER SPACER		20.00	bbl	.	.0	.0	6.0	
2	Lead Cement	VERSACEM (TM) SYSTEM (452010)	120.0	sacks	12.3	2.37	13.76	6	13.42
	13.418 Gal	FRESH WATER							
3	Tail Cement	SWIFTCES (TM) SYSTEM (452990)	120.0	sacks	14.2	1.43	6.88	6	6.72
	6.715 Gal	FRESH WATER							
4	DISPLACEMENT		58.9	bbl	.	.0	.0	6.0	
Calculated Values		Pressures		Volumes					
Displacement	58.9	Shut In: Instant		Lost Returns	0	Cement Slurry	70	Pad	
Top Of Cement	SURFACE	5 Min		Cement Returns	23	Actual Displacement	58.9	Treatment	
Frac Gradient		15 Min		Spacers	23	Load and Breakdown		Total Job	148.2
Rates									
Circulating		Mixing	6	Displacement	6	Avg. Job			6
Cement Left In Pipe	Amount	0 ft	Reason	Shoe Joint					
Frac Ring # 1 @	ID	Frac ring # 2 @	ID	Frac Ring # 3 @	ID	Frac Ring # 4 @	ID		
The Information Stated Herein Is Correct				Customer Representative Signature					

The Road to Excellence Starts with Safety

Sold To #: 343492		Ship To #: 2800909		Quote #:		Sales Order #: 7565564	
Customer: BILL BARRETT CORPORATION E-BILL				Customer Rep: South, Jodi			
Well Name: GGU FED			Well #: 32B-32-691		API/UWI #:		
Field: PICEANCE		City (SAP):		County/Parish: Garfield		State: Colorado	
Legal Description:							
Lat: N 0 deg. OR N 0 deg. 0 min. 0 secs.				Long: E 0 deg. OR E 0 deg. 0 min. 0 secs.			
Contractor: BARRETT			Rig/Platform Name/Num: PETRO PLUS				
Job Purpose: Cement Surface Casing						Ticket Amount:	
Well Type: Development Well			Job Type: Cement Surface Casing				
Sales Person: METLI, MARSHALL			Srv Supervisor: SMITH, DUSTIN			MBU ID Emp #: 418015	

Activity Description	Date/Time	Cht #	Rate bbl/min	Volume bbl		Pressure psig		Comments
				Stage	Total	Tubing	Casing	
Assessment Of Location Safety Meeting	08/18/2010 10:30							ALL HES EMPLOYEES
Pre-Rig Up Safety Meeting	08/18/2010 10:40							ALL HES EMPLOYEES
Rig-Up Equipment	08/18/2010 10:50							RIG UP COMPLETED AT END OF LAST JOB CREW STAYED ON LOCATION
Pre-Job Safety Meeting	08/18/2010 11:10							ALL HES EMPLOYEES AND RIG CREW
Rig-Up Completed	08/18/2010 11:20							TD: 825 TP: 806.53 SJ: 44.02 9 5/8 36# CSG 12 3/8 OH
Start Job	08/18/2010 11:32							JOB PUMPED OFFLINE, HOLE DRILLED WITH AIR, NO FLUID IN WELLBORE AT TIME OF CEMENT PIPE STATIC AT TIME OF CEMENT JOB NO QUICK LATCH USED ON CEMENT HEAD
Test Lines	08/18/2010 11:33					5000.0		PRESSURE TEST OK
Pump Spacer	08/18/2010 11:36		6	20	20		17.0	FRESH WATER
Pump Lead Cement	08/18/2010 11:43		6	50.9	50.9		90.0	120 SKS 12.3 PPG 2.38 YIELD 13.77 GAL/SK
Pump Tail Cement	08/18/2010 11:51		6	30.6	20		130.0	120 SKS 14.2 PPG 1.43 YIELD 6.85 GAL/SK TAIL CEMENT GOT LIGHT TOWARDS THE END COULDN'T GET WIEGHT BACK UP HAD OPERATOR SHUT DOWN 20 BBLS GONE ON TAIL

Sold To #: 343492

Ship To #: 2800909

Quote #:

Sales Order #:

7565564

SUMMIT Version: 7.20.130

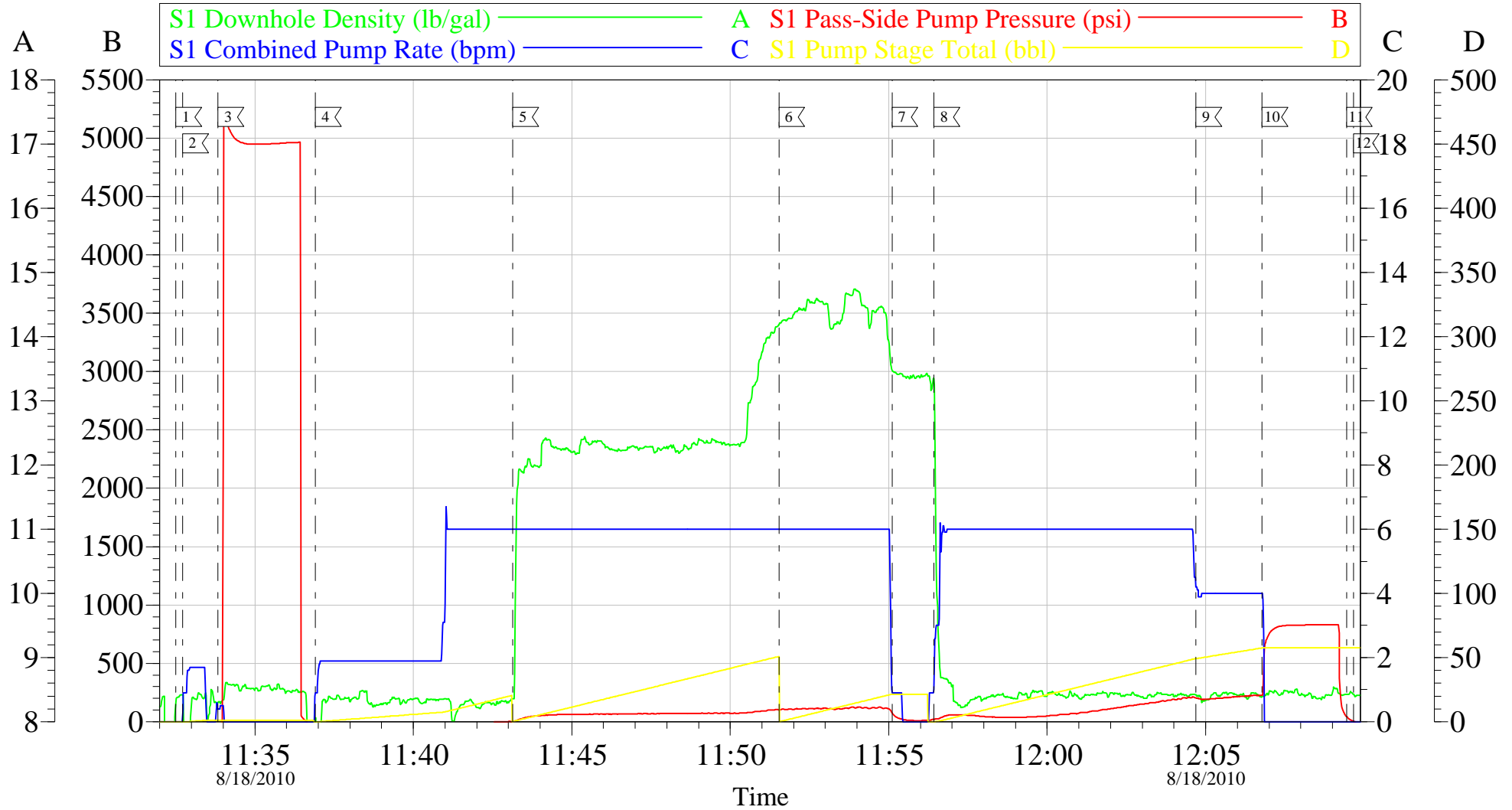
Wednesday, August 18, 2010 12:20:00

Cementing Job Log

Activity Description	Date/Time	Cht #	Rate bbl/min	Volume bbl		Pressure psig		Comments
				Stage	Total	Tubing	Casing	
Shutdown	08/18/2010 11:55							
Drop Plug	08/18/2010 11:55							PLUG AWAY NO PROBLEMS
Pump Displacement	08/18/2010 11:56		6	58.9	58.9		180.0	FRESH WATER
Slow Rate	08/18/2010 12:04		4	48.9	48.9		275.0	
Bump Plug	08/18/2010 12:06		4	58.9	58.9		842.0	
Check Floats	08/18/2010 12:09							FLOATS HELD
End Job	08/18/2010 12:09							23 BBLS CEMENT TO SURFACE
Pre-Rig Down Safety Meeting	08/18/2010 12:20							ALL HES EMPLOYEES
Rig-Down Completed	08/18/2010 12:40							RIG DOWN AND GET READY FOR NEXT JOB
Comment	08/18/2010 12:40							THANK YOU FOR USING HALLIBURTON DUSTIN SMITH AND CREW

BILL BARRETT

GGU FED 32B-32-691 9 5/8 SURFACE



Local Event Log								
1	START JOB	11:32:30	2	FILL LINES	11:32:43	3	TEST LINES	11:33:50
4	PUMP SPACER	11:36:55	5	PUMP LEAD CEMENT	11:43:08	6	PUMP TAIL CEMENT	11:51:32
7	SHUTDOWN/ DROP PLUG	11:55:06	8	PUMP DISPLACEMENT	11:56:26	9	SLOW RATE	12:04:41
10	BUMP PLUG	12:06:47	11	CHECK FLOATS	12:09:26	12	END JOB	12:09:39

Customer:	BILL BARRETT	Job Date:	18-Aug-2010	Sales Order #:	7565564
Well Description:	GGU FED 32-32B-691	Job Type:	9 5/8 SURFACE	ADC Used:	YES
Company Rep:	JODI SOUTH	Cement Supervisor:	DUSTIN SMITH	Elite #:	9 PAUL SALAZAR

OptiCem v6.4.8
18-Aug-10 12:14