

BILL BARRETT CORPORATION E-BILL
DO NOT MAIL-1099 18TH ST,STE 2300W
DENVER, Colorado

Dommer 23A-26-692

BARRETT/PETRO PLUS

Post Job Report **Cement Surface Casing**

Prepared for: Jodi South
Date Prepared: 7/17/09
Version: 1

Service Supervisor: JAMISON, PRICE

Submitted by:

HALLIBURTON

The Road to Excellence Starts with Safety

Sold To #: 343492	Ship To #: 2735476	Quote #:	Sales Order #: 6774357
Customer: BILL BARRETT CORPORATION E-BILL	Customer Rep: South, Jodi		
Well Name: Dommer	Well #: 23A-26-692	API/UWI #:	
Field: PICEANCE	City (SAP): SILT	County/Parish: Garfield	State: Colorado
Contractor: BARRETT	Rig/Platform Name/Num: PETRO PLUS		
Job Purpose: Cement Surface Casing			
Well Type: Development Well	Job Type: Cement Surface Casing		
Sales Person: METLI, MARSHALL	Srv Supervisor: JAMISON, PRICE	MBU ID Emp #:	229155

Job Personnel

HES Emp Name	Exp Hrs	Emp #	HES Emp Name	Exp Hrs	Emp #	HES Emp Name	Exp Hrs	Emp #
CHASTAIN, DERICK Allan	6.5	455848	CRONKHITE, KENT Alan	6.5	336769	JAMISON, PRICE W	6.5	229155
MUHLESTEIN, RYAN	6.5	453609	SMITH, DUSTIN Michael	6.5	418015			

Equipment

HES Unit #	Distance-1 way	HES Unit #	Distance-1 way	HES Unit #	Distance-1 way	HES Unit #	Distance-1 way
10616651C	120 mile	10784080	120 mile	10804579	120 mile	10829466	120 mile
10951246	120 mile	10995025	120 mile				

Job Hours

Date	On Location Hours	Operating Hours	Date	On Location Hours	Operating Hours	Date	On Location Hours	Operating Hours
7/16/09	0.5	0	7/17/09	6	0.40			

TOTAL Total is the sum of each column separately

Job

Formation Name	Formation Depth (MD)	Top	Bottom	Form Type	Job depth MD	Water Depth	Perforation Depth (MD)	From	To
				BHST	777.5 ft				

Job Times

Date	Time	Time Zone
16 - Jul - 2009	21:00	MST
16 - Jul - 2009	22:30	MST
17 - Jul - 2009	04:21	MST
17 - Jul - 2009	05:01	MST
17 - Jul - 2009	06:00	MST

Well Data

Description	New / Used	Max pressure psig	Size in	ID in	Weight lbm/ft	Thread	Grade	Top MD ft	Bottom MD ft	Top TVD ft	Bottom TVD ft
OPEN HOLE				12.375				0.0	800.	0.0	800.
CASING	New	1616	9.625	8.921	36.	8 RD	J-55	0.0	777.5	0.0	777.5

Sales/Rental/3rd Party (HES)

Description	Qty	Qty uom	Depth	Supplier
PLUG,CMTG,TOP,9 5/8,HWE,8.16 MIN/9.06 MA	1	EA		
PORT. DAS W/CEMWIN;ACQUIRE W/HES, ZI	1	JOB		
ADC (AUTO DENSITY CTRL) SYS, /JOB,ZI	1	JOB		

Tools and Accessories

Type	Size	Qty	Make	Depth	Type	Size	Qty	Make	Depth	Type	Size	Qty	Make
Guide Shoe					Packer					Top Plug			
Float Shoe					Bridge Plug					Bottom Plug			
Float Collar					Retainer					SSR plug set			
Insert Float										Plug Container			
Stage Tool										Centralizers			

Miscellaneous Materials

Gelling Agt	Conc	Surfactant	Conc	Acid Type	Qty	Conc	%
Treatment Fld	Conc	Inhibitor	Conc	Sand Type	Size	Qty	

Fluid Data										
Stage/Plug #: 1										
Fluid #	Stage Type	Fluid Name	Qty	Qty uom	Mixing Density lbm/gal	Yield ft ³ /sk	Mix Fluid Gal/sk	Rate bbl/min	Total Mix Fluid Gal/sk	
1	WATER SPACER		40	bbl	8.33			5.0		
2	LEAD CEMENT	VERSACEM (TM) SYSTEM (452010)	120.0	sacks	12.3	2.38	13.75	5.0		
		CAL-SEAL 60, 50 LB BAG (101217146)								
		ECONOLITE (100001580)								
		VERSASET, 55 LB SK (101376573)								
		SALT, 100 LB BAG (100003652)								
		POLY-E-FLAKE (101216940)								
		D-AIR 3000 (101007446)								
		FRESH WATER								
3	TAIL CEMENT	SWIFTCEM (TM) SYSTEM (452990)	120.0	sacks	14.2	1.43	6.88	5.0		
4	DISPLACEMENT		56.7	bbl	8.33			6.0		
Calculated Values		Pressures		Volumes						
Displacement	56.7	Shut In: Instant		Lost Returns	NO	Cement Slurry	81.3	Pad		
Top Of Cement	SURFACE	5 Min		Cement Returns	22.5	Actual Displacement	56.5	Treatment		
Frac Gradient		15 Min		Spacers	40	Load and Breakdown		Total Job	178	
Rates										
Circulating	5	Mixing	5	Displacement	6	Avg. Job	5			
Cement Left In Pipe	Amount	44.2 ft	Reason	Shoe Joint						
Frac Ring # 1 @	ID	Frac ring # 2 @	ID	Frac Ring # 3 @	ID	Frac Ring # 4 @	ID			
The Information Stated Herein Is Correct				Customer Representative Signature						

The Road to Excellence Starts with Safety

Sold To #: 343492		Ship To #: 2735476		Quote #:		Sales Order #: 6774357	
Customer: BILL BARRETT CORPORATION E-BILL				Customer Rep: South, Jodi			
Well Name: Dommer			Well #: 23A-26-692			API/UWI #:	
Field: PICEANCE		City (SAP): SILT		County/Parish: Garfield			State: Colorado
Legal Description:							
Lat: N 0 deg. OR N 0 deg. 0 min. 0 secs.				Long: E 0 deg. OR E 0 deg. 0 min. 0 secs.			
Contractor: BARRETT			Rig/Platform Name/Num: PETRO PLUS				
Job Purpose: Cement Surface Casing						Ticket Amount:	
Well Type: Development Well			Job Type: Cement Surface Casing				
Sales Person: METLI, MARSHALL			Srv Supervisor: JAMISON, PRICE			MBU ID Emp #: 229155	

Activity Description	Date/Time	Cht #	Rate bbl/min	Volume bbl		Pressure psig		Comments
				Stage	Total	Tubing	Casing	
Call Out	07/16/2009 21:00							TD 800 TP 777.5 SHOE JOINT 44.2 HOLE 12 3/8 CASING 9 5/8 36# J-55 NO MUD WEIGHT WELL WAS DRILLED WITH AIR
Depart Yard Safety Meeting	07/16/2009 20:30							
Crew Leave Yard	07/16/2009 20:45							
Assessment Of Location Safety Meeting	07/16/2009 22:30							
Assessment Of Location Safety Meeting	07/16/2009 22:45							
Pre-Rig Up Safety Meeting	07/17/2009 00:20							
Waiting - Arrived Early to Location - Start Time	07/17/2009 01:00							
Waiting - Arrived Early to Location - End Time	07/17/2009 03:30							
Pre-Job Safety Meeting	07/17/2009 04:00							
Start Job	07/17/2009 04:21							
Prime Pumps	07/17/2009 04:21		2	2			.0	FRESH WATER
Test Lines	07/17/2009 04:23						2000. 0	
Pump Spacer 1	07/17/2009 04:24		5	40			67.0	FRESH WATER
Pump Lead Cement	07/17/2009 04:32		5	47			114.0	MIXED @ 12.3 PPG YIELD 2.38 WAT/REQ 13.76 120 SKS
Pump Tail Cement	07/17/2009 04:42		5	30			156.0	MIXED @ 14.2 PPG YIELD 1.43 WAT/REQ 6.88 120 SKS

Sold To # : 343492

Ship To # :2735476

Quote # :

Sales Order # :

6774357

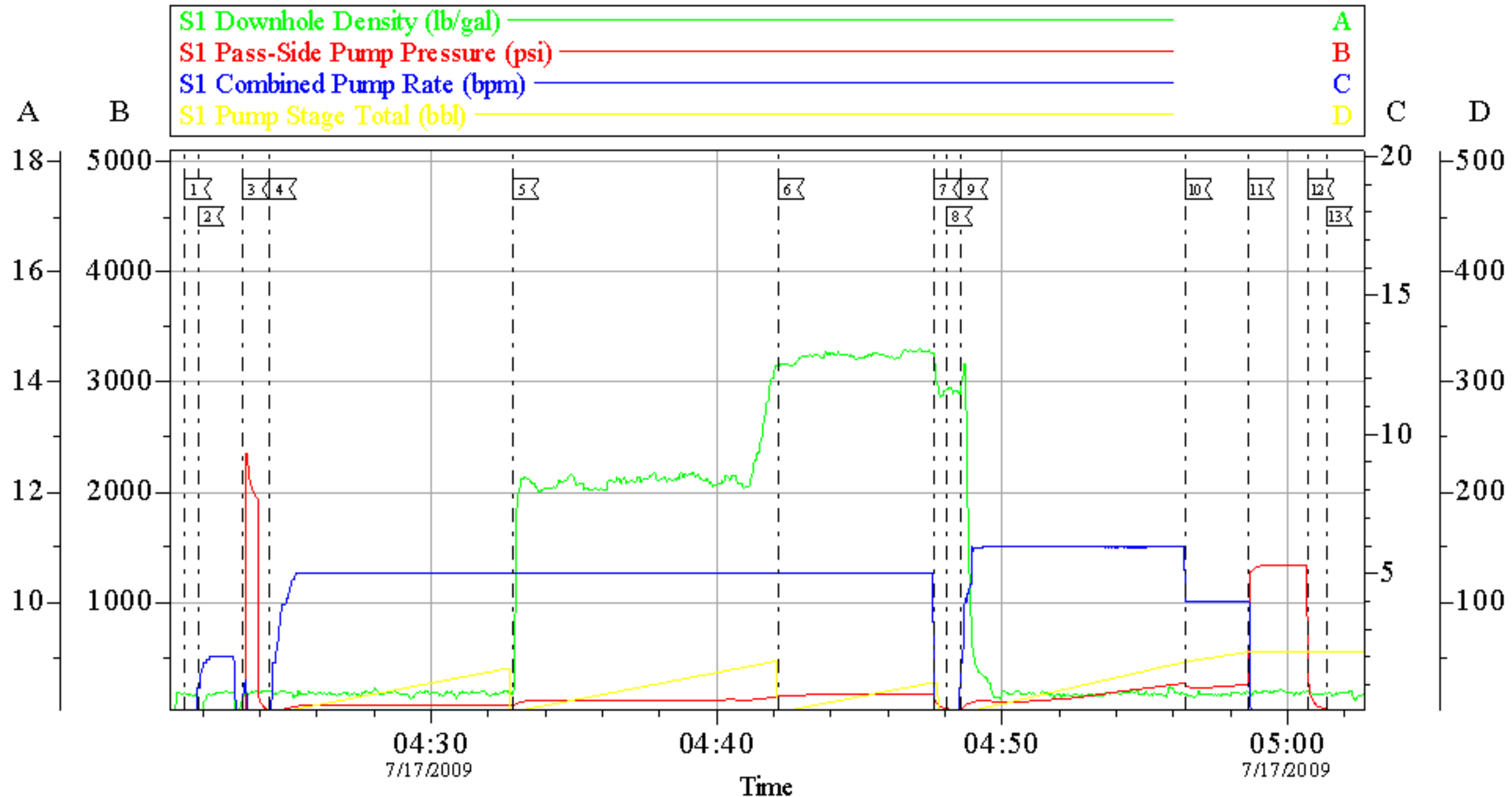
SUMMIT Version: 7.20.130

Friday, July 17, 2009 06:29:00

Activity Description	Date/Time	Cht #	Rate bbl/min	Volume bbl		Pressure psig		Comments
				Stage	Total	Tubing	Casing	
Shutdown	07/17/2009 04:47							
Drop Top Plug	07/17/2009 04:48							
Pump Displacement	07/17/2009 04:48		6					FRESH WATER
Slow Rate	07/17/2009 04:56		4	46			270.0	
Bump Plug	07/17/2009 04:58		4	56.7			260.0	PRESSURED UP TO 1350 PSI
Check Floats	07/17/2009 05:00							FLOATS HELD
End Job	07/17/2009 05:01							GOT RETURNS ON TAIL CEMENT. RETURNS GOOD TILL END OF JOB
Post-Job Safety Meeting (Pre Rig-Down)	07/17/2009 05:10							22.5 BBLS CEMENT BACK TO SURFACE
Depart Location Safety Meeting	07/17/2009 05:50							
Crew Leave Location	07/17/2009 06:00							THANKS FOR USING HALLIBURTON BILL JAMISON & CREW

BILL BARRETT

9 5/8 SURFACE CASING



Local Event Log								
1	START JOB	04:21:23	2	PRIMELINES	04:21:30	3	TEST LINES	04:23:25
4	START FRESH WATER SPACER	04:24:21	5	START LEAD CEMENT	04:32:51	6	START TAIL CEMENT	04:42:09
7	SHUT DOWN	04:47:36	8	DROP PLUG	04:48:03	9	START DISPLACEMENT	04:48:34
10	SLOW RATE	04:56:25	11	BUMP PLUG	04:58:36	12	CHECK FLOATS	05:00:42
13	END JOB	05:01:21						

Customer: BILL BARRETT
 Well Description: DOMMER 23A-26-692
 Company Rep: JODI SOUTH

Job Date: 17-Jul-2009
 Job Type: SURFACE
 Cement Supervisor: BILL JAMISON

Sales Order #: 6774357
 ADC Used: YES
 Elite #:4 RYAN MUHLESTEIN

HALLIBURTON
 OptiCem v6.3.4
 17-Jul-09 05:06