

BILL BARRETT CORPORATION E-BILL
DO NOT MAIL-1099 18TH ST,STE 2300W
DENVER, Colorado

Dommer 33C-26-692

BARRETT/PETRO PLUS

Post Job Report Cement Surface Casing

Prepared for: Jodi South
Date Prepared: 7/17/09
Version: 1

Service Supervisor: JAMISON, PRICE

Submitted by:

HALLIBURTON

The Road to Excellence Starts with Safety

Sold To #: 343492	Ship To #: 2735448	Quote #:	Sales Order #: 6774310
Customer: BILL BARRETT CORPORATION E-BILL	Customer Rep: South, Jodi		
Well Name: Dommer	Well #: 33C-26-692	API/UWI #:	
Field: PICEANCE	City (SAP): SILT	County/Parish: Garfield	State: Colorado
Contractor: BARRETT	Rig/Platform Name/Num: PETRO PLUS		
Job Purpose: Cement Surface Casing			
Well Type: Development Well	Job Type: Cement Surface Casing		
Sales Person: METLI, MARSHALL	Srv Supervisor: JAMISON, PRICE	MBU ID Emp #:	229155

Job Personnel

HES Emp Name	Exp Hrs	Emp #	HES Emp Name	Exp Hrs	Emp #	HES Emp Name	Exp Hrs	Emp #
CHASTAIN, DERICK Allan	12.5	455848	CRONKHITE, KENT Alan	12.5	336769	JAMISON, PRICE W	12.5	229155
MUHLESTEIN, RYAN	12.5	453609	SMITH, DUSTIN Michael	12.5	418015			

Equipment

HES Unit #	Distance-1 way	HES Unit #	Distance-1 way	HES Unit #	Distance-1 way	HES Unit #	Distance-1 way
10616651C	120 mile	10829466	120 mile	10867531	120 mile	10951246	120 mile
10989685	120 mile	10995025	120 mile				

Job Hours

Date	On Location Hours	Operating Hours	Date	On Location Hours	Operating Hours	Date	On Location Hours	Operating Hours
7/17/09	12.5	.45						

TOTAL Total is the sum of each column separately

Job

Formation Name	Formation Depth (MD)	Top	Bottom	Form Type	Job depth MD	Water Depth	Perforation Depth (MD)	From	To
				BHST	775.8 ft				

Job Times

Called Out	Date	Time	Time Zone
On Location	17 - Jul - 2009	06:00	MST
Job Started	17 - Jul - 2009	16:38	MST
Job Completed	17 - Jul - 2009	17:19	MST
Departed Loc	17 - Jul - 2009	18:30	MST

Well Data

Description	New / Used	Max pressure psig	Size in	ID in	Weight lbm/ft	Thread	Grade	Top MD ft	Bottom MD ft	Top TVD ft	Bottom TVD ft
OPEN HOLE				12.375				0.0	795.	0.0	795.
SURFACE CASING	NEW	1616	9.625	8.921	36.	8 RD	J-55	0.0	775.8	0.0	775.8

Sales/Rental/3rd Party (HES)

Description	Qty	Qty uom	Depth	Supplier
PLUG,CMTG,TOP,9 5/8,HWE,8.16 MIN/9.06 MA	1	EA		
ADC (AUTO DENSITY CTRL) SYS, /JOB,ZI	1	JOB		
PORT. DAS W/CEMWIN;ACQUIRE W/HES, ZI	1	JOB		

Tools and Accessories

Type	Size	Qty	Make	Depth	Type	Size	Qty	Make	Depth	Type	Size	Qty	Make
Guide Shoe					Packer					Top Plug			
Float Shoe					Bridge Plug					Bottom Plug			
Float Collar					Retainer					SSR plug set			
Insert Float										Plug Container			
Stage Tool										Centralizers			

Miscellaneous Materials

Gelling Agt	Conc	Surfactant	Conc	Acid Type	Qty	Conc	%
Treatment Fld	Conc	Inhibitor	Conc	Sand Type	Size	Qty	

Fluid Data									
Stage/Plug #: 1									
Fluid #	Stage Type	Fluid Name	Qty	Qty uom	Mixing Density lbm/gal	Yield ft ³ /sk	Mix Fluid Gal/sk	Rate bbl/min	Total Mix Fluid Gal/sk
1	WATER SPACER		40	bbl	8.33			5.0	
2	Lead Cement	VERSACEM (TM) SYSTEM (452010)	120	sacks	12.3	2.38	13.75	5.0	
		CAL-SEAL 60, 50 LB BAG (101217146)							
		ECONOLITE (100001580)							
		VERSASET, 55 LB SK (101376573)							
		SALT, 100 LB BAG (100003652)							
		POLY-E-FLAKE (101216940)							
		D-AIR 3000 (101007446)							
		FRESH WATER							
3	Tail Cement	SWIFTCEM (TM) SYSTEM (452990)	120	sacks	14.2	1.43	6.88	5.0	
4	DISPLACEMENT		56.5	bbl	.	.0	.0	6.0	
Calculated Values		Pressures		Volumes					
Displacement	56.5	Shut In: Instant		Lost Returns	NO	Cement Slurry	81.4	Pad	
Top Of Cement	SURFACE	5 Min		Cement Returns	30	Actual Displacement	56	Treatment	
Frac Gradient		15 Min		Spacers	40	Load and Breakdown		Total Job	178
Rates									
Circulating	NO	Mixing	5	Displacement	6	Avg. Job	5		
Cement Left In Pipe	Amount	44.5 ft	Reason	Shoe Joint					
Frac Ring # 1 @	ID	Frac ring # 2 @	ID	Frac Ring # 3 @	ID	Frac Ring # 4 @	ID		
The Information Stated Herein Is Correct				Customer Representative Signature					

The Road to Excellence Starts with Safety

Sold To #: 343492		Ship To #: 2735448		Quote #:		Sales Order #: 6774310	
Customer: BILL BARRETT CORPORATION E-BILL				Customer Rep: South, Jodi			
Well Name: Dommer			Well #: 33C-26-692			API/UWI #:	
Field: PICEANCE		City (SAP): SILT		County/Parish: Garfield			State: Colorado
Legal Description:							
Lat: N 0 deg. OR N 0 deg. 0 min. 0 secs.				Long: E 0 deg. OR E 0 deg. 0 min. 0 secs.			
Contractor: BARRETT			Rig/Platform Name/Num: PETRO PLUS				
Job Purpose: Cement Surface Casing						Ticket Amount:	
Well Type: Development Well			Job Type: Cement Surface Casing				
Sales Person: METLI, MARSHALL			Srv Supervisor: JAMISON, PRICE			MBU ID Emp #: 229155	

Activity Description	Date/Time	Cht #	Rate bbl/min	Volume bbl		Pressure psig		Comments
				Stage	Total	Tubing	Casing	
Standby Rig	07/17/2009 06:00							RIG DRILLING NEXT WELL STAYED ON LOCATION. TD 795 TP 775.75 SHOE JOINT 44.45 CASING 9 5/8 36 # J-55 NO MUD WEIGHT WELL WAS DRILLED WITH AIR.
Pump Tail Cement	07/17/2009 15:59		5	30.6			175.0	MIXED @ 14.2 PPG YIELD 1.43 WAT/REQ 6.88 120 SKS
Pre-Rig Up Safety Meeting	07/17/2009 16:00							
Pre-Job Safety Meeting	07/17/2009 16:30							
Start Job	07/17/2009 16:38							
Prime Pumps	07/17/2009 16:39		2	2			7.0	FRESH WATER
Test Lines	07/17/2009 16:40						2000.0	
Pump Spacer 1	07/17/2009 16:41		5	40			57.0	FRESH WATER
Pump Lead Cement	07/17/2009 16:49		5	50.8			120.0	MIXED @ 12.3 PPG YIELD 2.38 WAT/REQ 13.75 120 SKS
Shutdown	07/17/2009 17:04							
Drop Plug	07/17/2009 17:05							
Pump Displacement	07/17/2009 17:05		6					FRESH WATER
Slow Rate	07/17/2009 17:13		4	46			246.0	
Bump Plug	07/17/2009 17:17		4	56.5			230.0	PRESSURED UP TO 1220 PSI

Sold To # : 343492

Ship To # :2735448

Quote # :

Sales Order # :

6774310

SUMMIT Version: 7.20.130

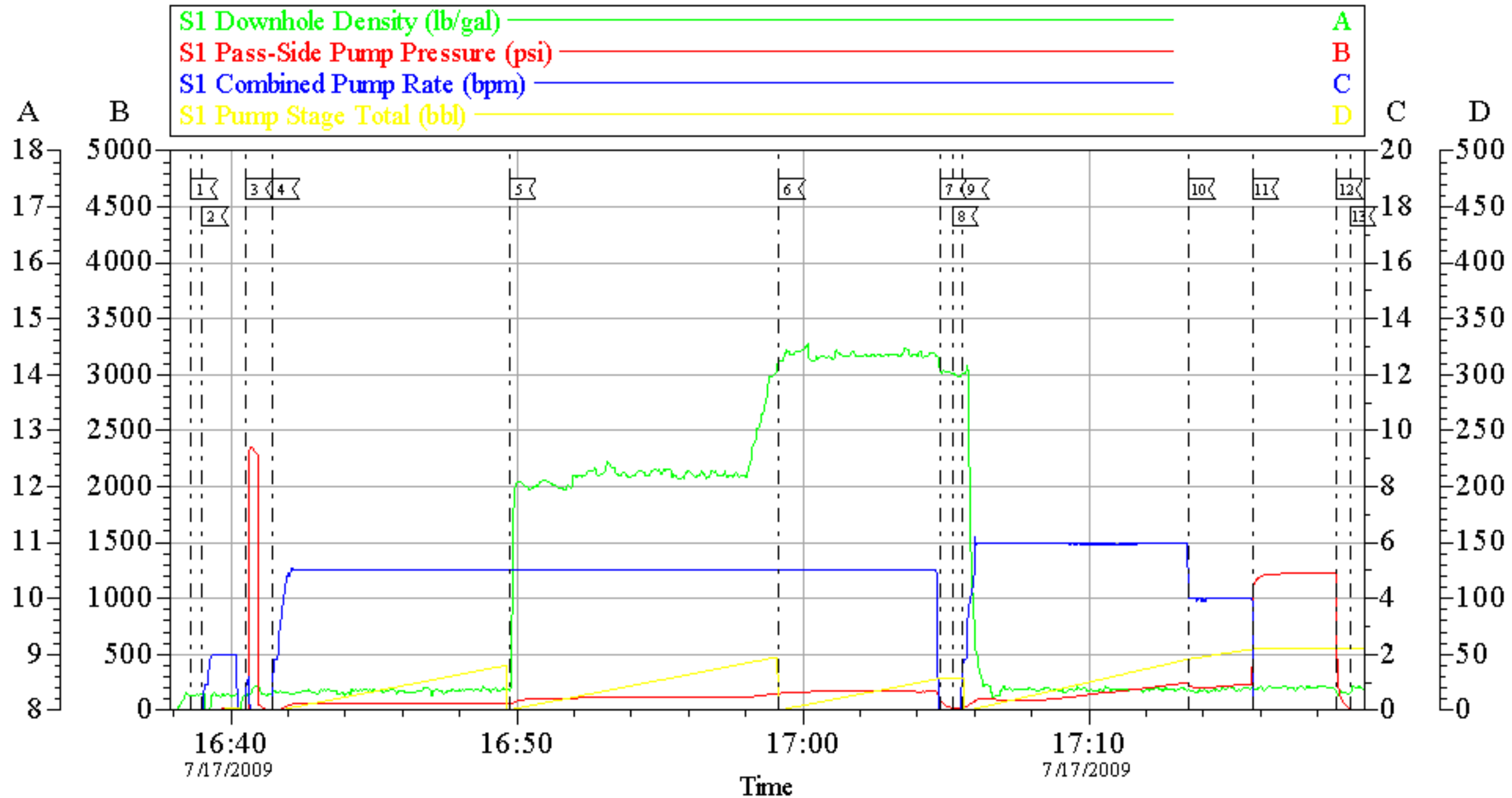
Friday, July 17, 2009 06:07:00

Cementing Job Log

Activity Description	Date/Time	Cht #	Rate bbl/ min	Volume bbl		Pressure psig		Comments
				Stage	Total	Tubing	Casing	
Check Floats	07/17/2009 17:18							FLOATS HELD
End Job	07/17/2009 17:19							GOT RETURNES ON TAIL CEMENT
Post-Job Safety Meeting (Pre Rig-Down)	07/17/2009 17:20							GOOD RETURNES TILL END OF JOB
Depart Location Safety Meeting	07/17/2009 18:20							CEMENT BACK TO SURFACE 30 BBLS
Crew Leave Location	07/17/2009 18:30							THANKS FOR USING HALLIBURTON BILL JAMISON & CREW

BILL BARRETT

9 5/8 SURFACE CASING



Local Event Log

1	START JOB	16:38:37	2	PRIMELINES	16:39:00	3	TEST LINES	16:40:32
4	START FRESH WATER SPACER	16:41:28	5	START LEAD CEMENT	16:49:45	6	START TAIL CEMENT	16:59:10
7	SHUT DOWN	17:04:48	8	DROP PLUG	17:05:13	9	START DISPLACEMENT	17:05:35
10	SLOW RATE	17:13:30	11	BUMP PLUG	17:15:43	12	CHECK FLOATS	17:18:40
13	END JOB	17:19:07						

Customer: BILL BARRETT
 Well Description: DOMMER 33C-26-692
 Company Rep: JODI SOUTH

Job Date: 17-Jul-2009
 Job Type: SURFACE CASING
 Cement Supervisor: BILL JAMISON

Sales Order #: 6774310
 ADC Used: YES
 Elite #: 4 RYAN MUHLESTEIN

HALLIBURTON
 OptiCem v6.3.4
 17-Jul-09 17:20