

BILL BARRETT CORPORATION E-BILL
DO NOT MAIL-1099 18TH ST,STE 2300W
DENVER, Colorado

Dommer 33A-26-692

BARRETT/PETRO PLUS

Post Job Report **Cement Surface Casing**

Prepared for: Jodi South
Date Prepared: 7/16/09
Version: 1

Service Supervisor: JAMISON, PRICE

Submitted by:

HALLIBURTON

The Road to Excellence Starts with Safety

Sold To #: 343492		Ship To #: 2735261		Quote #:		Sales Order #: 6774362	
Customer: BILL BARRETT CORPORATION E-BILL				Customer Rep: South, Jodi			
Well Name: Dommer			Well #: 33A-26-692			API/UWI #:	
Field: PICEANCE		City (SAP): SILT		County/Parish: Garfield		State: Colorado	
Contractor: BARRETT			Rig/Platform Name/Num: PETRO PLUS				
Job Purpose: Cement Surface Casing							
Well Type: Development Well			Job Type: Cement Surface Casing				
Sales Person: METLI, MARSHALL			Srv Supervisor: JAMISON, PRICE			MBU ID Emp #: 229155	

Job Personnel

HES Emp Name	Exp Hrs	Emp #	HES Emp Name	Exp Hrs	Emp #	HES Emp Name	Exp Hrs	Emp #
DANIEL, EVERETT Dean	5.0	337325	JAMISON, PRICE W	5.0	229155	JENSON, SHANE	5.0	441759
LITTLE, FRANK	5.0	448361	MUHLESTEIN, RYAN Herrick	5.0	453609			

Equipment

HES Unit #	Distance-1 way	HES Unit #	Distance-1 way	HES Unit #	Distance-1 way	HES Unit #	Distance-1 way
10616651C	120 mile	10829466	120 mile	10867322	120 mile	10951246	120 mile
10995025	120 mile	10998512	120 mile				

Job Hours

Date	On Location Hours	Operating Hours	Date	On Location Hours	Operating Hours	Date	On Location Hours	Operating Hours
7/15/09	2.5	0	7/16/09	2.5	1			
TOTAL			Total is the sum of each column separately					

Job

Job				Job Times			
Formation Name				Date	Time	Time Zone	
Formation Depth (MD)	Top		Bottom	Called Out	15 - Jul - 2009	17:45	MST
Form Type		BHST		On Location	15 - Jul - 2009	21:30	MST
Job depth MD	770.9 ft	Job Depth TVD	770.9 ft	Job Started	16 - Jul - 2009	00:24	MST
Water Depth		Wk Ht Above Floor		Job Completed	16 - Jul - 2009	01:14	MST
Perforation Depth (MD)	From		To	Departed Loc	16 - Jul - 2009	02:30	MST

Well Data

Description	New / Used	Max pressure psig	Size in	ID in	Weight lbm/ft	Thread	Grade	Top MD ft	Bottom MD ft	Top TVD ft	Bottom TVD ft
12 3/8 open hole Section				12.3/8				0.0	789.	0.0	789
9 5/8 Surface Casing	NEW	1616	9.625	8.921	36.	8 RD	J-55	0.0	770.9	0.0	770.9

Sales/Rental/3rd Party (HES)

Description	Qty	Qty uom	Depth	Supplier
PLUG,CMTG,TOP,9 5/8,HWE,8.16 MIN/9.06 MA	1	EA		
PORT. DAS W/CEMWIN;ACQUIRE W/HES, ZI	1	JOB		
ADC (AUTO DENSITY CTRL) SYS, /JOB,ZI	1	JOB		
SHOE,GID,9-5/8 8RD	1	EA		
CLR,FLT,9-5/8 8RD 29.3-40PPF,2-3/4	1	EA		
COLLAR-STOP-9 5/8"-FRICTION-HINGED	1	EA		
CENTRALIZER-9-5/8"-CSG-12 1/4"-HINGED	5	EA		
KIT,HALL WELD-A	2	EA		

Tools and Accessories													
Type	Size	Qty	Make	Depth	Type	Size	Qty	Make	Depth	Type	Size	Qty	Make
Guide Shoe					Packer					Top Plug			
Float Shoe					Bridge Plug					Bottom Plug			
Float Collar					Retainer					SSR plug set			
Insert Float										Plug Container			
Stage Tool										Centralizers			
Miscellaneous Materials													
Gelling Agt			Conc		Surfactant			Conc		Acid Type		Qty	Conc %
Treatment Fld			Conc		Inhibitor			Conc		Sand Type		Size	Qty
Fluid Data													
Stage/Plug #: 1													
Fluid #	Stage Type	Fluid Name			Qty	Qty uom	Mixing Density lbm/gal	Yield ft3/sk	Mix Fluid Gal/sk	Rate bbl/min	Total Mix Fluid Gal/sk		
1	WATER SPACER				40	bbl	8.33			6.0			
2	LEAD CEMENT	VERSACEM (TM) SYSTEM (452010)			120.0	sacks	12.3	2.37	13.76	6.0			
	13.418 Gal	FRESH WATER											
3	TAIL CEMENT	SWIFTCES (TM) SYSTEM (452990)			120.0	sacks	14.2	1.43	6.88	6.0			
	6.715 Gal	FRESH WATER											
4	DISPLACEMENT				56.2	bbl	8.33			6.0			
Calculated Values		Pressures			Volumes								
Displacement	56.2	Shut In: Instant			Lost Returns	NO	Cement Slurry	81.5	Pad				
Top Of Cement	SURFACE	5 Min			Cement Returns	23	Actual Displacement	56	Treatment				
Frac Gradient		15 Min			Spacers	40	Load and Breakdown		Total Job	178			
Rates													
Circulating	NONE	Mixing			6	Displacement	6	Avg. Job	6				
Cement Left In Pipe	Amount	44.4 ft	Reason	Shoe Joint									
Frac Ring # 1 @	ID	Frac ring # 2 @	ID	Frac Ring # 3 @	ID	Frac Ring # 4 @	ID						
The Information Stated Herein Is Correct					Customer Representative Signature								

The Road to Excellence Starts with Safety

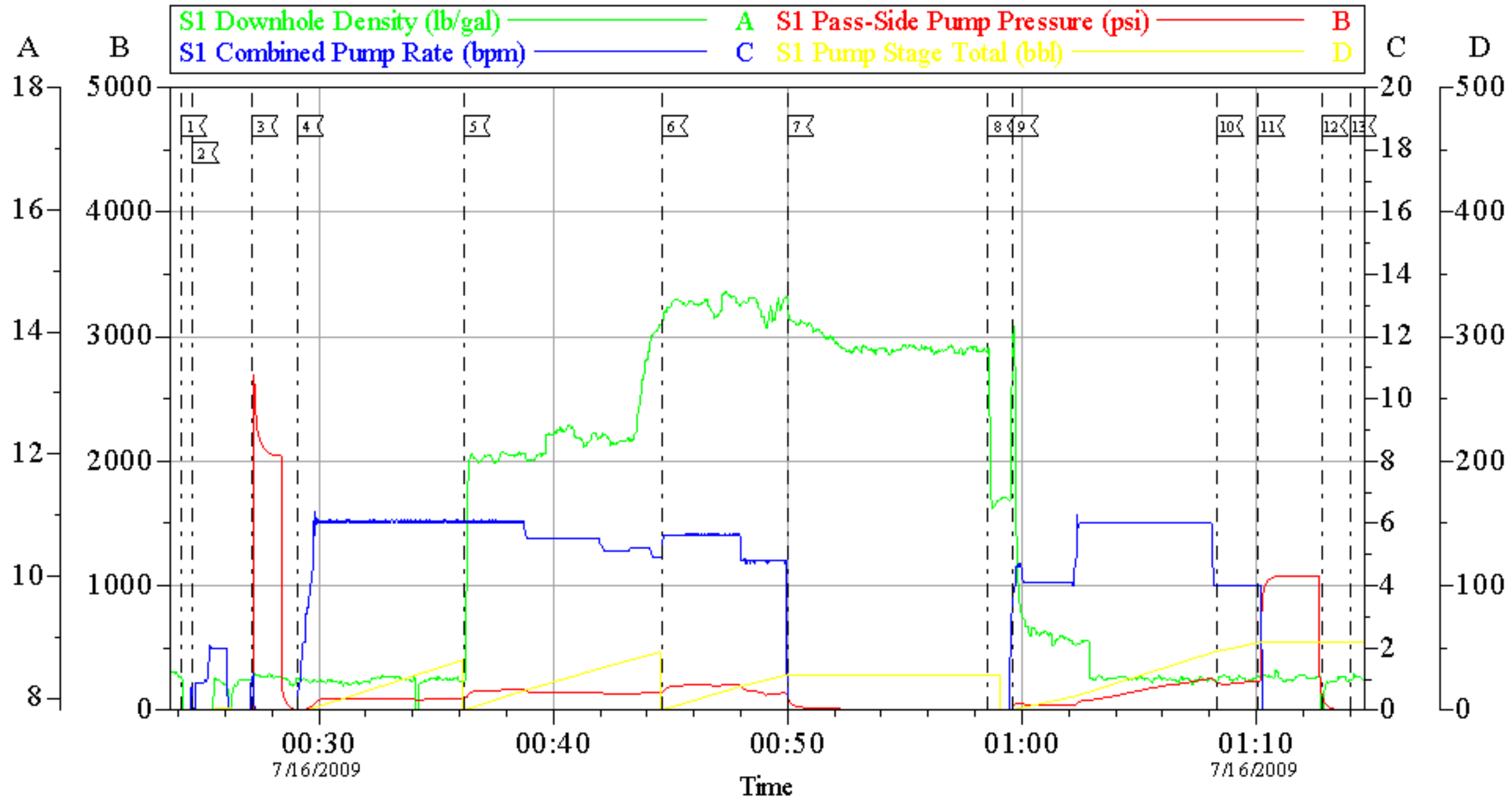
Sold To #: 343492		Ship To #: 2735261		Quote #:		Sales Order #: 6774362	
Customer: BILL BARRETT CORPORATION E-BILL				Customer Rep: South, Jodi			
Well Name: Dommer			Well #: 33A-26-692			API/UWI #:	
Field: PICEANCE		City (SAP): SILT		County/Parish: Garfield			State: Colorado
Legal Description:							
Lat: N 0 deg. OR N 0 deg. 0 min. 0 secs.				Long: E 0 deg. OR E 0 deg. 0 min. 0 secs.			
Contractor: BARRETT			Rig/Platform Name/Num: PETRO PLUS				
Job Purpose: Cement Surface Casing						Ticket Amount:	
Well Type: Development Well			Job Type: Cement Surface Casing				
Sales Person: METLI, MARSHALL			Srv Supervisor: JAMISON, PRICE			MBU ID Emp #: 229155	

Activity Description	Date/Time	Cht #	Rate bbl/min	Volume bbl		Pressure psig		Comments
				Stage	Total	Tubing	Casing	
Call Out	07/15/2009 17:45							TD 789 TP 770.94 SHOE JOINT 44.40 NO MUD WELL WAS AIR DRILLED HOLE 12 3/8
Depart Yard Safety Meeting	07/15/2009 19:20							
Crew Leave Yard	07/15/2009 19:30							
Arrive At Loc	07/15/2009 21:30							
Assessment Of Location Safety Meeting	07/15/2009 21:40							
Pre-Rig Up Safety Meeting	07/15/2009 21:50							
Wait on Customer or Customer Sub-Contractor Equip	07/15/2009 22:30							
Wait on Customer or Customer Sub-Contractor Equipm	07/16/2009 00:01							
Pre-Job Safety Meeting	07/16/2009 00:10							
Start Job	07/16/2009 00:24							
Prime Pumps	07/16/2009 00:24		2	2			9.0	
Test Lines	07/16/2009 00:27						2000.0	
Pump Spacer 1	07/16/2009 00:29		6	40			100.0	FRESH WATER
Pump Lead Cement	07/16/2009 00:36		6	50.9			160.0	MIXED AT 12.3 PPG YIELD 2.38 WAT/REQ 13.75 120 SKS
Pump Tail Cement	07/16/2009 00:44		6	30.6			200.0	MIXED AT 14.2 PPG YIELD 1.43 WAT/REQ 6.88 120 SKS

Activity Description	Date/Time	Cht #	Rate bbl/min	Volume bbl		Pressure psig		Comments
				Stage	Total	Tubing	Casing	
Shutdown	07/16/2009 00:50							
Drop Top Plug	07/16/2009 00:58							
Pump Displacement	07/16/2009 00:59		6					FRESH WATER
Slow Rate	07/16/2009 01:08		4	46			270.0	
Bump Plug	07/16/2009 01:10		4	56			236.0	PRESSURED UP TO 1078 PSI
Check Floats	07/16/2009 01:12							FLOATS HELD
End Job	07/16/2009 01:14							GOT CIRCULATION WHILE ON TAIL CEMENT
Post-Job Safety Meeting (Pre Rig-Down)	07/16/2009 01:30							CEMENT TO SURFACE 23 BBLS
Depart Location Safety Meeting	07/16/2009 02:20							GOOD CIRCULATION TO END OF JOB
Crew Leave Location	07/16/2009 02:30							THANKS FOR USING HALLIBURTON BILL JAMISON AND CREW

BILL BARRETT

9 5/8 SURFACE CASING



Local Event Log								
1	START JOB	00:24:05	2	PRIMELINES	00:24:36	3	TEST LINES	00:27:08
4	START FRESH WATER SPACER	00:29:05	5	START LEAD CEMENT	00:36:11	6	START TAIL CEMENT	00:44:37
7	SHUT DOWN	00:50:00	8	DROP PLUG	00:58:34	9	START DIPLACEMENT	00:59:35
10	SLOW RATE	01:08:20	11	BUMP PLUG	01:10:06	12	CHECK FLOATS	01:12:47
13	END JOB	01:14:00						

Customer: BILL BARRETT
Well Description: DOMMER 33A-26-692
Company Rep: JODI SOUTH

Job Date: 15-Jul-2009
Job Type: SURFACE CASING
Cement Supervisor: BILL JAMISON

Sales Order #: 6774362
ADC Used: YES
Elite #:4 RAYN MUHLESEIN

HALLIBURTON
OptiCem v6.3.4
16-Jul-09 01:32