

BILL BARRETT CORPORATION E-BILL
DO NOT MAIL-1099 18TH ST,STE 2300W
DENVER, Colorado

Miller 34D-31-691

PATTERSON 313

Post Job Report

Cement Production Casing

Prepared for: ROBERT SCHUTZ
Date Prepared: 10/24/2009
Version: 1

Service Supervisor: REEVES, BRANDON

Submitted by:

HALLIBURTON

The Road to Excellence Starts with Safety

Sold To #: 343492	Ship To #: 2750790	Quote #:	Sales Order #: 6961595
Customer: BILL BARRETT CORPORATION E-BILL	Customer Rep: Shultz, Robert		
Well Name: Miller	Well #: 34D-31-691	API/UWI #: 05-045-18238	
Field: PICEANC CREEK FIELD	City (SAP): SILT	County/Parish: Garfield	State: Colorado
Contractor: PATTERSON 313	Rig/Platform Name/Num: PATTERSON 313		
Job Purpose: Cement Production Casing			
Well Type: Development Well	Job Type: Cement Production Casing		
Sales Person: METLI, MARSHALL	Srv Supervisor: REEVES, BRANDON	MBU ID Emp #: 287883	

Job Personnel

HES Emp Name	Exp Hrs	Emp #	HES Emp Name	Exp Hrs	Emp #	HES Emp Name	Exp Hrs	Emp #
KUKUS, CRAIG A	5	369124	REEVES, BRANDON W	5	287883	ROSS, CHARLES Raymond	5	453128
SLAUGHTER, JESSE Dean	5	454315	YOUNG, JEREMY R	5	418013		5	

Equipment

HES Unit #	Distance-1 way	HES Unit #	Distance-1 way	HES Unit #	Distance-1 way	HES Unit #	Distance-1 way
10567589C	120 mile	10822535	120 mile	10829463	120 mile	10856464	120 mile
10867304	120 mile	10995027	120 mile	10998054	120 mile	11071463	120 mile

Job Hours

Date	On Location Hours	Operating Hours	Date	On Location Hours	Operating Hours	Date	On Location Hours	Operating Hours
10/24/2009	5	3						

TOTAL Total is the sum of each column separately

Job

Formation Name							Date	Time	Time Zone
Formation Depth (MD)	Top			Bottom		Called Out	24 - Oct - 2009	13:40	MST
Form Type				BHST		On Location	24 - Oct - 2009	17:40	MST
Job depth MD	7256. ft		Job Depth TVD	7256. ft		Job Started	24 - Oct - 2009	20:56	MST
Water Depth				Wk Ht Above Floor	3. ft	Job Completed	24 - Oct - 2009	22:32	MST
Perforation Depth (MD)	From			To		Departed Loc	17 - Oct - 2009	00:00	MST

Well Data

Description	New / Used	Max pressure psig	Size in	ID in	Weight lbm/ft	Thread	Grade	Top MD ft	Bottom MD ft	Top TVD ft	Bottom TVD ft
-------------	------------	-------------------	---------	-------	---------------	--------	-------	-----------	--------------	------------	---------------

Sales/Rental/3rd Party (HES)

Description	Qty	Qty uom	Depth	Supplier
PLUG,CMTG,TOP,4 1/2,HWE,3.65 MIN/4.14 MA	1	EA		
PORT. DAS W/CEMWIN;ACQUIRE W/HES, ZI	1	JOB		
ADC (AUTO DENSITY CTRL) SYS, /JOB,ZI	1	JOB		

Tools and Accessories

Type	Size	Qty	Make	Depth	Type	Size	Qty	Make	Depth	Type	Size	Qty	Make
Guide Shoe					Packer					Top Plug	4.5"	1	
Float Shoe					Bridge Plug					Bottom Plug			
Float Collar					Retainer					SSR plug set			
Insert Float										Plug Container	4.5"	1	
Stage Tool										Centralizers			

Miscellaneous Materials

Gelling Agt	Conc	Surfactant	Conc	Acid Type	Qty	Conc	%
Treatment Fld	Conc	Inhibitor	Conc	Sand Type	Size	Qty	

Fluid Data									
Stage/Plug #: 1									
Fluid #	Stage Type	Fluid Name	Qty	Qty uom	Mixing Density lbm/gal	Yield ft ³ /sk	Mix Fluid Gal/sk	Rate bbl/min	Total Mix Fluid Gal/sk
1	SPACER	FRESH WATER	10	bbl	8.33	.0	.0	.0	
2	SUPERFLUSH		20	bbl	10.0	.0	.0	.0	
420 gal/gal		FLO-CHEK A, 55 GAL DRUM (101209856)							
3	SPACER	FRESH WATER	10	bbl	8.33	.0	.0	.0	
4	Tail Cement	HALCEM (TM) SYSTEM (452986)	1004	sacks	13.1	1.47	6.41		
7.217 Gal		FRESH WATER							
5	DISPLACEMENT	FRESH WATER/CLAYFIX	111.8	bbl	8.45	.0	.0	.0	
5 lbm/bbl		POTASSIUM CHLORIDE 7% (100001585)							
Calculated Values		Pressures		Volumes					
Displacement	111.8	Shut In: Instant		Lost Returns	NO	Cement Slurry	262.9	Pad	
Top Of Cement		5 Min		Cement Returns	0	Actual Displacement	111	Treatment	
Frac Gradient		15 Min		Spacers	40	Load and Breakdown		Total Job	
Rates									
Circulating		Mixing	7	Displacement	8	Avg. Job	7.5		
Cement Left In Pipe	Amount	45.15 ft	Reason	Shoe Joint					
Frac Ring # 1 @	ID	Frac ring # 2 @	ID	Frac Ring # 3 @	ID	Frac Ring # 4 @	ID		
The Information Stated Herein Is Correct				Customer Representative Signature					

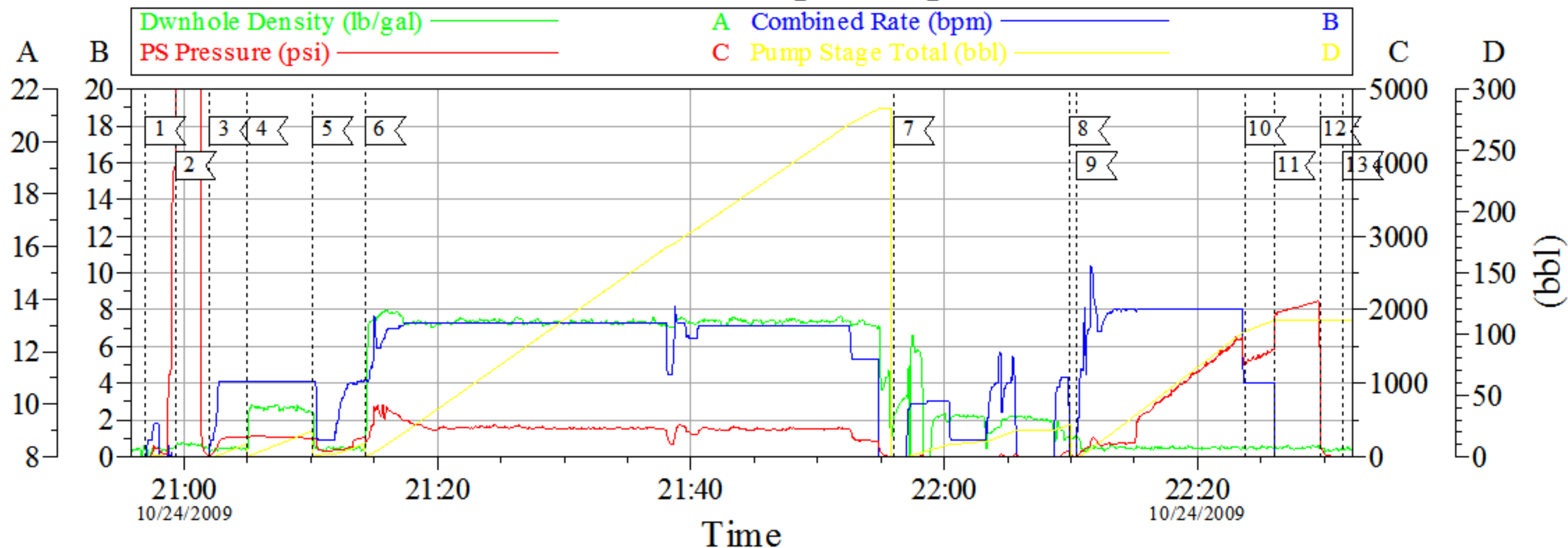
The Road to Excellence Starts with Safety

Sold To #: 343492	Ship To #: 2750790	Quote #:	Sales Order #: 6961595
Customer: BILL BARRETT CORPORATION E-BILL		Customer Rep: Shultz, Robert	
Well Name: Miller		Well #: 34D-31-691	API/UWI #: 05-045-18238
Field: PICEANC CREEK FIELD	City (SAP): SILT	County/Parish: Garfield	State: Colorado
Legal Description:			
Lat: N 0 deg. OR N 0 deg. 0 min. 0 secs.		Long: E 0 deg. OR E 0 deg. 0 min. 0 secs.	
Contractor: PATTERSON 313		Rig/Platform Name/Num: PATTERSON 313	
Job Purpose: Cement Production Casing			Ticket Amount:
Well Type: Development Well		Job Type: Cement Production Casing	
Sales Person: METLI, MARSHALL		Srv Supervisor: REEVES, BRANDON	MBU ID Emp #: 287883

Activity Description	Date/Time	Cht #	Rate bbl/min	Volume bbl		Pressure psig		Comments
				Stage	Total	Tubing	Casing	
Call Out	10/24/2009 13:40							
Pre-Convoy Safety Meeting	10/24/2009 15:50							
Arrive at Location from Service Center	10/24/2009 17:40							
Assessment Of Location Safety Meeting	10/24/2009 17:50							
Other	10/24/2009 18:00							SPOT EQUIPMENT
Pre-Rig Up Safety Meeting	10/24/2009 18:05							
Rig-Up Equipment	10/24/2009 18:15							
Pre-Job Safety Meeting	10/24/2009 20:45							
Start Job	10/24/2009 20:56							TD-7270' TP-7256' SJ-45.15' MW-10.5# HOLE-8 3/4" TO 5298' 7 7/8" 5298' TO 7270'
Test Lines	10/24/2009 20:58						5000.0	
Pump Spacer 1	10/24/2009 21:02		4	10			260.0	FRESH WATER SPACER
Pump Spacer 2	10/24/2009 21:05		4	20			280.0	SUPERFLUSH SPACER
Pump Spacer 1	10/24/2009 21:10		4	10			250.0	FRESH WATER SPACER
Pump Tail Cement	10/24/2009 21:14		7	262.9			640.0	1004 SKS. @ 13.1# 1.47 YIELD 6.41 WRQ.
Clean Lines	10/24/2009 21:55							
Drop Top Plug	10/24/2009 22:08							

Activity Description	Date/Time	Cht #	Rate bbl/min	Volume bbl		Pressure psig		Comments
				Stage	Total	Tubing	Casing	
Pump Displacement	10/24/2009 22:10		8				1625.0	CLAYFIX H2O DISPLACEMENT
Slow Rate	10/24/2009 22:23		4	100			1280.0	
Bump Plug	10/24/2009 22:26		4	111			1990.0	PLUG LANDED
Check Floats	10/24/2009 22:29							FLOATS HELD
End Job	10/24/2009 22:32							
Rig-Down Equipment	10/24/2009 22:40							WELL CIRCULATED BEFORE STARTING THE JOB. GOOD CIRCULATION THROUGHOUT THE JOB. PIPE WAS NOT RECIPROCATED. PASON GAS METER READ 582 PRIOR TO STARTING THE JOB.
Other	10/24/2009 22:41							THANKS FOR USING HALLIBURTON. BRANDON REEVES AND CREW.

4 1/2" Longstring



Event Log

Intersection	PP	Intersection	PP
1 START JOB	20:56:55 4.000	2 TEST LINES	20:59:18 3979
3 PUMP H2O SPACER	21:02:01 20.00	4 PUMP SUPERFLUSH SPACER	21:05:00 258.2
5 PUMP H2O SPACER	21:10:08 248.7	6 PUMP TAIL CEMENT	21:14:16 248.2
7 SHUT DOWN WASH PUMPS	21:56:02 0.000	8 DROP TOP PLUG	22:09:51 65.10
9 PUMP DISPLACEMENT	22:10:30 3.000	10 SLOW RATE	22:23:45 1294
11 LAND PLUG	22:26:07 1894	12 CHECK FLOATS	22:29:42 874.9
13 END JOB	22:31:27 4.000		

Customer: BILL BARRETT CORP.
Well Number: MILLER 34D-31-691
Supervisor: BRANDON REEVES

Job Date: 10/29/2009
Job Type: LONGSTRING
Company Rep: ROBERT SCHULTZ

Ticket #: 6961595
ADC Used: Yes
Elite/Operator: 3/CRAIG KUKUS

CemWin v1.7.2
24-Oct-09 22:36