
BILL BARRETT CORPORATION E-BILL

**GGU MILLER 34D-31-691
MAMM CREEK
Garfield County , Colorado**

Cement Surface Casing
14-Sep-2009

Job Site Documents

The Road to Excellence Starts with Safety

Sold To #: 343492	Ship To #: 2744031	Quote #:	Sales Order #: 6888536
Customer: BILL BARRETT CORPORATION E-BILL		Customer Rep: South, Jodi	
Well Name: GGU MILLER	Well #: 34D-31-691	API/UWI #:	
Field: MAMM CREEK	City (SAP): SILT	County/Parish: Garfield	State: Colorado
Contractor: PETROPLUS		Rig/Platform Name/Num: PETROPLUS	
Job Purpose: Cement Surface Casing			
Well Type: Development Well		Job Type: Cement Surface Casing	
Sales Person: METLI, MARSHALL	Srvc Supervisor: BROST, ROBERT	MBU ID Emp #: 394382	

Job Personnel

HES Emp Name	Exp Hrs	Emp #	HES Emp Name	Exp Hrs	Emp #	HES Emp Name	Exp Hrs	Emp #
BROST, ROBERT W	12	394382	BROWN, TRAVIS A	12	396848	GAMBLE, BENJAMIN T	12	446666
Nye, Keven	12	460558						

Equipment

HES Unit #	Distance-1 way	HES Unit #	Distance-1 way	HES Unit #	Distance-1 way	HES Unit #	Distance-1 way
10829469	60 mile	10872429	60 mile	10897909	60 mile	11021972	60 mile
11027039	60 mile						

Job Hours

Date	On Location Hours	Operating Hours	Date	On Location Hours	Operating Hours	Date	On Location Hours	Operating Hours
9/14/09	4	1						

TOTAL	Total is the sum of each column separately							
--------------	--	--	--	--	--	--	--	--

Job

Formation Name	Formation Depth (MD)	Top	Bottom	Form Type	Job depth MD	Job Depth TVD	Water Depth	Perforation Depth (MD)	From	To
				BHST	805. ft	805. ft				
							Wk Ht Above Floor			
						2. ft				

Job Times

Date	Time	Time Zone
14 - Sep - 2009	03:00	MST
14 - Sep - 2009	03:00	MST
14 - Sep - 2009	14:10	MST
14 - Sep - 2009	14:54	MST
14 - Sep - 2009	15:30	MST

Well Data

Description	New / Used	Max pressure psig	Size in	ID in	Weight lbm/ft	Thread	Grade	Top MD ft	Bottom MD ft	Top TVD ft	Bottom TVD ft
12 1/4 Open Hole Section				12.25				.	805.		
9 5/8 Surface Casing	New		9.625	8.921	36.			.	785.7		

Sales/Rental/3rd Party (HES)

Description	Qty	Qty uom	Depth	Supplier
CENTRALIZER-9-5/8"-CSG-12 1/4"-HINGED	6	EA		
CLR,FLT,9-5/8 8RD 29.3-40PPF,2-3/4	1	EA		
SHOE,GID,9-5/8 8RD	1	EA		
COLLAR-STOP-9 5/8"-FRICTION-HINGED	1	EA		
KIT,HALL WELD-A	2	EA		
PLUG,CMTG,TOP,9 5/8,HWE,8.16 MIN/9.06 MA	1	EA		
PORT. DAS W/CEMWIN;ACQUIRE W/HES, ZI	1	JOB		
ADC (AUTO DENSITY CTRL) SYS, /JOB,ZI	1	JOB		

Tools and Accessories

Type	Size	Qty	Make	Depth	Type	Size	Qty	Make	Depth	Type	Size	Qty	Make
Guide Shoe					Packer					Top Plug	9.625	1	
Float Shoe					Bridge Plug					Bottom Plug			
Float Collar					Retainer					SSR plug set			
Insert Float										Plug Container	9.625	1	
Stage Tool										Centralizers			

Miscellaneous Materials													
Gelling Agt		Conc		Surfactant		Conc		Acid Type		Qty		Conc	%
Treatment Fld		Conc		Inhibitor		Conc		Sand Type		Size		Qty	
Fluid Data													
Stage/Plug #: 1													
Fluid #	Stage Type	Fluid Name			Qty	Qty uom	Mixing Density lbm/gal	Yield ft ³ /sk	Mix Fluid Gal/sk	Rate bbl/min	Total Mix Fluid Gal/sk		
1	WATER SPACER				2.00	bbl	8.33	.0	.0	1			
2	Lead Cement	VERSACEM (TM) SYSTEM (452010)			120.0	sacks	12.3	2.37	13.76	6	13.42		
		13.418 Gal FRESH WATER											
3	Tail Cement	SWIFTCES (TM) SYSTEM (452990)			120.0	sacks	14.2	1.43	6.88	6	6.72		
		6.715 Gal FRESH WATER											
4	DISPLACEMENT				57.00	bbl	8.33	.0	.0	6			
Calculated Values		Pressures			Volumes								
Displacement	57	Shut In: Instant			Lost Returns		no	Cement Slurry		82	Pad		
Top Of Cement	735.65	5 Min			Cement Returns		no	Actual Displacement		57	Treatment		
Frac Gradient		15 Min			Spacers		no	Load and Breakdown			Total Job		
Rates													
Circulating	Air drilled	Mixing		6		Displacement		6		Avg. Job		6	
Cement Left In Pipe		Amount	44.9 ft	Reason	Shoe Joint								
Frac Ring # 1 @		ID		Frac ring # 2 @		ID		Frac Ring # 3 @		ID		Frac Ring # 4 @	
The Information Stated Herein Is Correct					Customer Representative Signature								

The Road to Excellence Starts with Safety

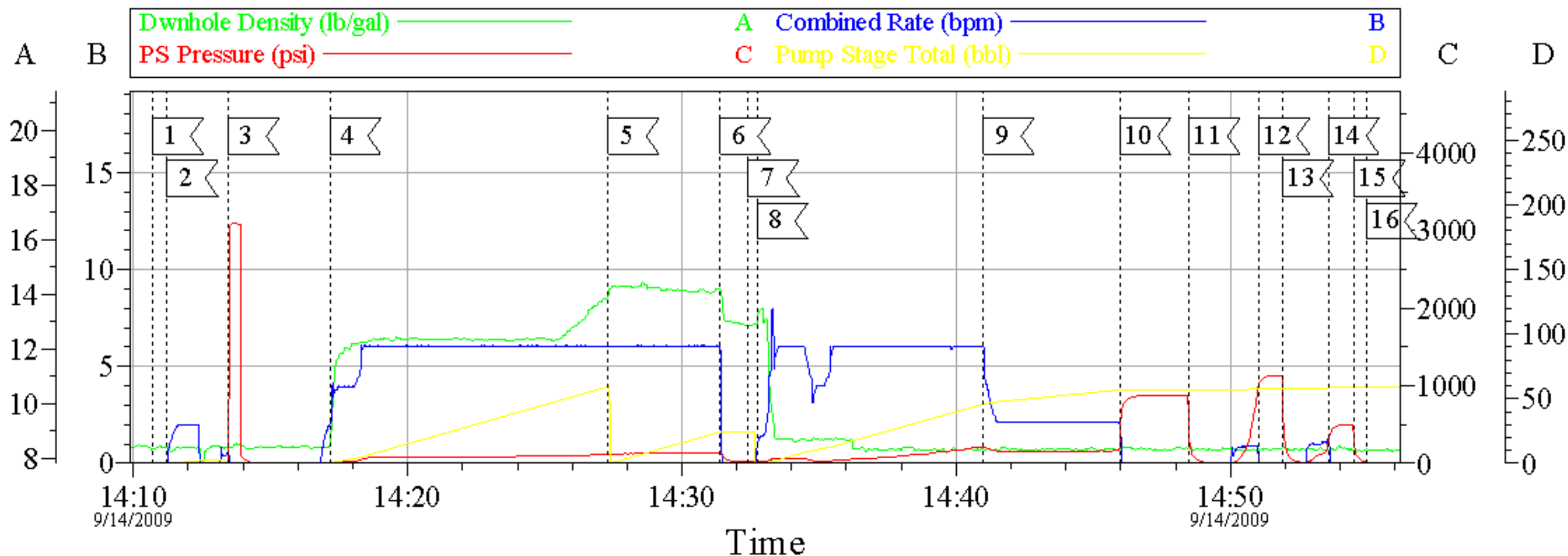
Sold To #: 343492	Ship To #: 2744031	Quote #:	Sales Order #: 6888536
Customer: BILL BARRETT CORPORATION E-BILL		Customer Rep: South, Jodi	
Well Name: GGU MILLER	Well #: 34D-31-691	API/UWI #:	
Field: MAMM CREEK	City (SAP): SILT	County/Parish: Garfield	State: Colorado
Legal Description:			
Lat:		Long:	
Contractor: PETROPLUS		Rig/Platform Name/Num: PETROPLUS	
Job Purpose: Cement Surface Casing			Ticket Amount:
Well Type: Development Well		Job Type: Cement Surface Casing	
Sales Person: METLI, MARSHALL		Srv Supervisor: BROST, ROBERT	MBU ID Emp #: 394382

Activity Description	Date/Time	Cht #	Rate bbl/min	Volume bbl		Pressure psig		Comments
				Stage	Total	Tubing	Casing	
Call Out	09/14/2009 03:00							elite#11 9 5/8" surface air drilled 12 3/8" open hole 36#cs 805td 785.65tp 44.90shoe
Safety Huddle	09/14/2009 03:05							no cell phones use seatbelts watch following distance
Arrive At Loc	09/14/2009 03:06							big
Assessment Of Location Safety Meeting	09/14/2009 03:07							walk threw rig up looking for haz rig hit water in hole slowed down drill time
Rig-Up Equipment	09/14/2009 13:30							
Rig-Up Completed	09/14/2009 14:00							rig finished cs at 1330
Safety Meeting - Pre Job	09/14/2009 14:01							attn by rig crew pump crew comp rep
Start Job	09/14/2009 14:10		1	2			3.0	fill lines 2 bbls fresh water
Pressure Test	09/14/2009 14:11						3100.0	good test no leaks
Pump Lead Cement	09/14/2009 14:16		6	51			120.0	120 sks 12.3 ppg 2.37 yield 13.76 h2o
Pump Tail Cement	09/14/2009 14:27		6	31			66.0	120 sks 14.2 ppg 1.43 yield 6.88 h2o
Shutdown	09/14/2009 14:31							
Drop Top Plug	09/14/2009 14:32							plug left container
Pump Displacement	09/14/2009 14:33		6	57			167.0	fresh water
Bump Plug	09/14/2009 14:45		2				166.0	took 500 psi over to bump plug

Activity Description	Date/Time	Cht #	Rate bbl/ min	Volume bbl		Pressure psig		Comments
				Stage	Total	Tubing	Casing	
Check Floats	09/14/2009 14:47						871.0	floats did not hold
Bump Plug	09/14/2009 14:49						1080. 0	rebumped plug
Check Floats	09/14/2009 14:52						1128. 0	floats did not hold pressure up well to 500psi shut in well
End Job	09/14/2009 14:54							no cmt to surface will need to top out well
Safety Meeting - Pre Rig- Down	09/14/2009 15:00							
Safety Meeting - Departing Location	09/14/2009 15:30							Thank You Robert Brost and crew

Bill Barrett

9 5/8" surface



Customer: Bill Barrett
Well Description: surface
LEASE: GGU Miller

Job Date: 9/14/09
CEMENTER: Robert Brost
WELL #: 34D-31-691

Ticket #: 6888536
ADC USED: YES
CO REP: J.South

CemWin v1.7.2
14-Sep-09 15:20