
BILL BARRETT CORPORATION E-BILL

**GGU SWANSON 33C-29-692
MAMM CREEK
Garfield County , Colorado**

Cement Surface Casing

Post Job Summary

The Road to Excellence Starts with Safety

Sold To #: 343492	Ship To #: 2802179	Quote #:	Sales Order #: 7580305
Customer: BILL BARRETT CORPORATION E-BILL		Customer Rep: South, Jodi	
Well Name: GGU SWANSON		Well #: 33C-29-692	API/UWI #: 05-045-19619
Field: MAMM CREEK	City (SAP): RIFLE	County/Parish: Garfield	State: Colorado
Lat: N 39.497 deg. OR N 39 deg. 29 min. 48.131 secs.		Long: W 107.576 deg. OR W -108 deg. 25 min. 26.468 secs.	
Contractor: BARRETT		Rig/Platform Name/Num: PETRO PLUS	
Job Purpose: Cement Surface Casing			
Well Type: Development Well		Job Type: Cement Surface Casing	
Sales Person: METLI, MARSHALL		Srvc Supervisor: MILLER, KEVIN	MBU ID Emp #: 443040

Job Personnel

HES Emp Name	Exp Hrs	Emp #	HES Emp Name	Exp Hrs	Emp #	HES Emp Name	Exp Hrs	Emp #
BANKS, BRENT A	10	371353	HOEFER, BRYAN D	10	415775	JENKINS, DEMON Lashaun	10	457892
MILLER, KEVIN Paul	10	443040						

Equipment

HES Unit #	Distance-1 way	HES Unit #	Distance-1 way	HES Unit #	Distance-1 way	HES Unit #	Distance-1 way
10001431	120 mile	10724643	120 mile	10872429	120 mile	11259885	120 mile
11360883	120 mile						

Job Hours

Date	On Location Hours	Operating Hours	Date	On Location Hours	Operating Hours	Date	On Location Hours	Operating Hours
9/6/10	5	0	9/7/10	5	2			

TOTAL Total is the sum of each column separately

Job

Job Times

Formation Name	Formation Depth (MD)	Top	Bottom	Called Out	Date	Time	Time Zone
Form Type		BHST		On Location	06 - Sep - 2010	18:00	MST
Job depth MD	800. ft	Job Depth TVD		800. ft	Job Started	07 - Sep - 2010	3:47 MST
Water Depth		Wk Ht Above Floor		2. ft	Job Completed	07 - Sep - 2010	4:29 MST
Perforation Depth (MD)	From	To		Departed Loc			

Well Data

Description	New / Used	Max pressure psig	Size in	ID in	Weight lbm/ft	Thread	Grade	Top MD ft	Bottom MD ft	Top TVD ft	Bottom TVD ft

Sales/Rental/3rd Party (HES)

Description	Qty	Qty uom	Depth	Supplier
PLUG,CMTG, TOP, 9 5/8, HWE, 8.16 MIN/9.06 MA	1	EA		
R/A DENSOMETER W/CHART RECORDER, /JOB, ZI	1	JOB		
PORT. DATA ACQUIS. W/OPTICEM RT W/HES	1	EA		
ADC (AUTO DENSITY CTRL) SYS, /JOB, ZI	1	JOB		

Tools and Accessories

Type	Size	Qty	Make	Depth	Type	Size	Qty	Make	Depth	Type	Size	Qty	Make
Guide Shoe					Packer					Top Plug	9.625	1	HES
Float Shoe					Bridge Plug					Bottom Plug			
Float Collar					Retainer					SSR plug set			
Insert Float										Plug Container	9.625	1	HES
Stage Tool										Centralizers			

Miscellaneous Materials

Gelling Agt	Conc	Surfactant	Conc	Acid Type	Qty	Conc	%
Treatment Fld	Conc	Inhibitor	Conc	Sand Type	Size	Qty	

Fluid Data									
Stage/Plug #: 1									
Fluid #	Stage Type	Fluid Name	Qty	Qty uom	Mixing Density lbm/gal	Yield ft3/sk	Mix Fluid Gal/sk	Rate bbl/min	Total Mix Fluid Gal/sk
1	WATER SPACER		20.00	bbl	.	.0	.0	.0	
2	Lead Cement	VERSACEM (TM) SYSTEM (452010)	120.0	sacks	12.3	2.37	13.76		13.42
	13.418 Gal	FRESH WATER							
3	Tail Cement	SWIFTCEM (TM) SYSTEM (452990)	120.0	sacks	14.2	1.43	6.88		6.72
	6.715 Gal	FRESH WATER							
4	DISPLACEMENT		58.00	bbl	.	.0	.0	.0	
Calculated Values		Pressures		Volumes					
Displacement	57.6	Shut In: Instant		Lost Returns		Cement Slurry	81	Pad	
Top Of Cement	SURFACE	5 Min		Cement Returns	22	Actual Displacement	57.6	Treatment	
Frac Gradient		15 Min		Spacers		Load and Breakdown		Total Job	
Rates									
Circulating		Mixing	6	Displacement	6	Avg. Job			6
Cement Left In Pipe	Amount	44.88 ft	Reason	Shoe Joint					
Frac Ring # 1 @	ID	Frac ring # 2 @	ID	Frac Ring # 3 @	ID	Frac Ring # 4 @	ID		
The Information Stated Herein Is Correct				Customer Representative Signature					

The Road to Excellence Starts with Safety

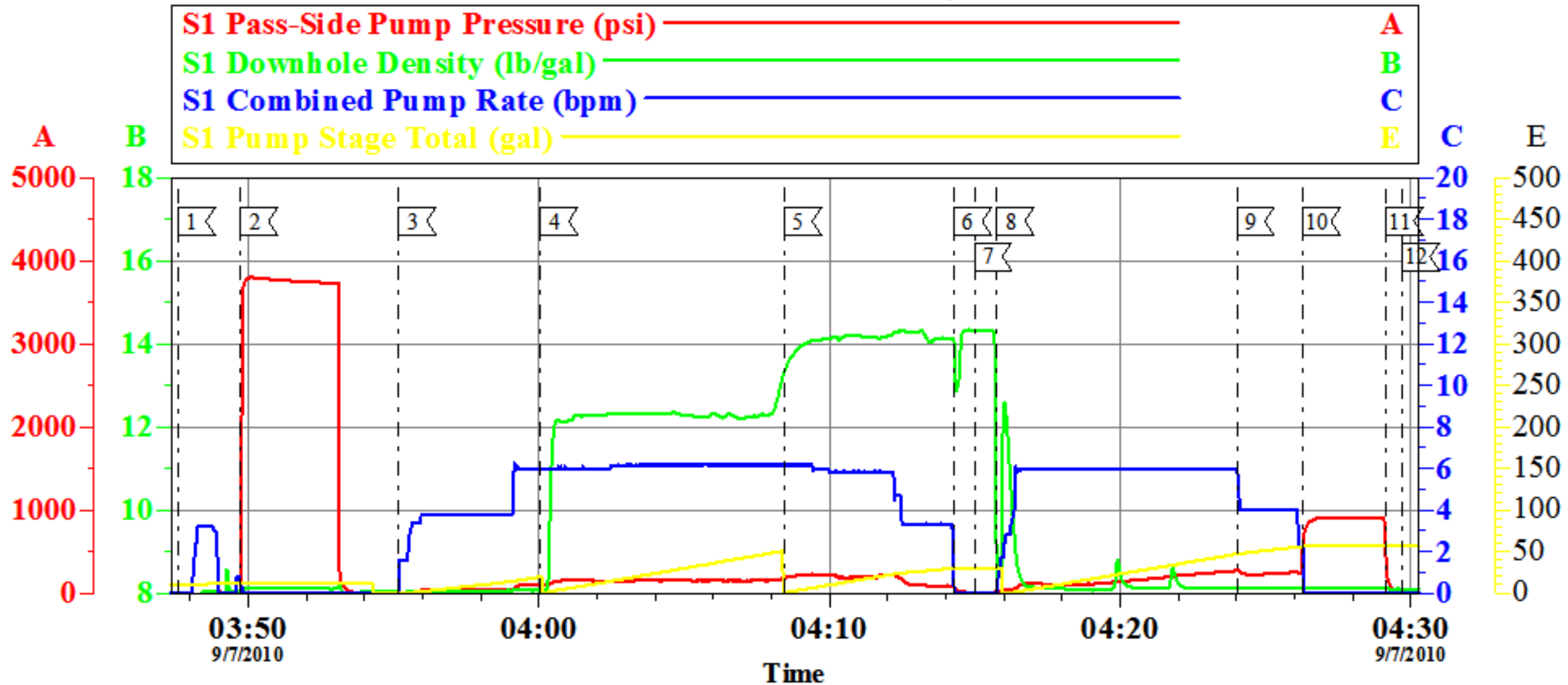
Sold To #: 343492	Ship To #: 2802179	Quote #:	Sales Order #: 7580305
Customer: BILL BARRETT CORPORATION E-BILL		Customer Rep: South, Jodi	
Well Name: GGU SWANSON		Well #: 33C-29-692	API/UWI #: 05-045-19619
Field: MAMM CREEK	City (SAP): RIFLE	County/Parish: Garfield	State: Colorado
Legal Description:			
Lat: N 39.497 deg. OR N 39 deg. 29 min. 48.131 secs.		Long: W 107.576 deg. OR W -108 deg. 25 min. 26.468 secs.	
Contractor: BARRETT		Rig/Platform Name/Num: PETRO PLUS	
Job Purpose: Cement Surface Casing			Ticket Amount:
Well Type: Development Well		Job Type: Cement Surface Casing	
Sales Person: METLI, MARSHALL		Srvc Supervisor: MILLER, KEVIN	MBU ID Emp #: 443040

Activity Description	Date/Time	Cht #	Rate bbl/min	Volume bbl		Pressure psig		Comments
				Stage	Total	Tubing	Casing	
Pre-Convoy Safety Meeting	09/06/2010 16:00							ALL HES PERSONEL
Crew Leave Yard	09/06/2010 16:30							
Arrive At Loc	09/06/2010 19:00							RIG WAS STILL DRILLING UPON HES ARRIVAL
Assessment Of Location Safety Meeting	09/06/2010 19:10							ALL HES PERSONEL
Rig-Up Completed	09/07/2010 03:00							
Pre-Job Safety Meeting	09/07/2010 03:30							ALL HES PERSONEL AND RIG CREW
Start Job	09/07/2010 03:47							TP- 789.89, TD- 807, SJ- 44.88 CSG- 9.625 36# J-55, OH- 12 3/8,
Pressure Test	09/07/2010 03:49							ALL LINES HELD PRESSURE AT 3500 PSI
Pump Spacer 1	09/07/2010 03:55		6	20			150.0	FRESH WATER
Pump Lead Cement	09/07/2010 04:00		6	50.8			230.0	120 SKS, 12.3 PPG, 2.38 FT3/SK, 13.75 GAL/SK
Pump Tail Cement	09/07/2010 04:08		6	30.5			230.0	120 SKS, 14.2 PPG, 1.43 FT3/ SK, 6.88 GAL/SK
Shutdown	09/07/2010 04:14							
Drop Top Plug	09/07/2010 04:15							
Pump Displacement	09/07/2010 04:15		6	57.6			300.0	FRESH WATER, GOT CEMENT RETURNS AT 35 BBLS AWAY 22 BBLS TO SURFACE

Activity Description	Date/Time	Cht #	Rate bbl/min	Volume bbl		Pressure psig		Comments
				Stage	Total	Tubing	Casing	
Slow Rate	09/07/2010 04:24		4	47			260.0	
Bump Plug	09/07/2010 04:26		4	57			900.0	
Check Floats	09/07/2010 04:29							FLOATS HELD
End Job	09/07/2010 04:30							
Post-Job Safety Meeting (Pre Rig-Down)	09/07/2010 04:40							ALL HES PERSONEL
Other	09/07/2010 04:41							THANK YOU FOR CHOOSING HALLIBURTON, KEVIN MILLER AND CREW
Rig-Up Equipment	09/07/2010 23:00							

BILL BARRETT

GGU SWANSON # 33C-29-691, SURFACE



Customer: BILL BARRETT
 Well Description: GGU SWANSON 33C-29-691
 Customer Rep: JODI SOUTH

Job Date: 07-Sep-2010
 Job type: SURFACE
 Service Supervisor: KEVIN MILLER

Sales Order #: 7580305
 ADC Used: YES
 Operator/ Pump: ANKS/ 11