

---

# **BILL BARRETT CORPORATION E-BILL**

---

**GGU FEDERAL 42B-29-691  
MAMM CREEK  
Garfield County , Colorado**

**Cement Surface Casing**  
**06-Sep-2010**

**Post Job Summary**

## The Road to Excellence Starts with Safety

Sold To #: 343492	Ship To #: 2802178	Quote #:	Sales Order #: 7580300
Customer: BILL BARRETT CORPORATION E-BILL	Customer Rep: South, Jody		
Well Name: GGU FEDERAL	Well #: 42B-29-691	API/UWI #: 05-045-19626	
Field: MAMM CREEK	City (SAP): Silt	County/Parish: Garfield	State: Colorado
Lat: N 39.497 deg. OR N 39 deg. 29 min. 48.052 secs.	Long: W 107.576 deg. OR W -108 deg. 25 min. 26.861 secs.		
Contractor: BARRETT	Rig/Platform Name/Num: PETRO PLUS		
Job Purpose: Cement Surface Casing			
Well Type: Development Well	Job Type: Cement Surface Casing		
Sales Person: METLI, MARSHALL	Srv Supervisor: KUKUS, CRAIG	MBU ID Emp #: 369124	

## Job Personnel

HES Emp Name	Exp Hrs	Emp #	HES Emp Name	Exp Hrs	Emp #	HES Emp Name	Exp Hrs	Emp #
CHASTAIN, DERICK Allan	3.5	455848	KUKUS, CRAIG A	3.5	369124	MILLER, KEVIN Paul	3.5	443040

## Equipment

HES Unit #	Distance-1 way	HES Unit #	Distance-1 way	HES Unit #	Distance-1 way	HES Unit #	Distance-1 way
10829469	120 mile	10872429	120 mile	11021972	120 mile	11027039	120 mile
11259885	120 mile	11360883	120 mile				

## Job Hours

Date	On Location Hours	Operating Hours	Date	On Location Hours	Operating Hours	Date	On Location Hours	Operating Hours
9/6/10	3.5	1						

**TOTAL** Total is the sum of each column separately

Job				Job Times			
Formation Name				Date	Time	Time Zone	
Formation Depth (MD)	Top	Bottom		Called Out	06 - Sep - 2010	00:15	MST
Form Type	BHST			On Location	06 - Sep - 2010	04:35	MST
Job depth MD	855. ft			Job Started	06 - Sep - 2010	06:28	MST
Water Depth	Wk Ht Above Floor			Job Completed	06 - Sep - 2010	07:07	MST
Perforation Depth (MD)	From	To		Departed Loc	06 - Sep - 2010	08:33	MST

## Well Data

Description	New / Used	Max pressure psig	Size in	ID in	Weight lbm/ft	Thread	Grade	Top MD ft	Bottom MD ft	Top TVD ft	Bottom TVD ft
-------------	------------	-------------------	---------	-------	---------------	--------	-------	-----------	--------------	------------	---------------

Sales/Rental/3<sup>rd</sup> Party (HES)

Description	Qty	Qty uom	Depth	Supplier
PLUG,CMTG,TOP,9 5/8,HWE,8.16 MIN/9.06 MA	1	EA		
R/A DENSOMETER W/CHART RECORDER,/JOB,ZI	1	JOB		
PORT. DATA ACQUIS. W/OPTICEM RT W/HES	1	EA		
ADC (AUTO DENSITY CTRL) SYS, /JOB,ZI	1	JOB		

## Tools and Accessories

Type	Size	Qty	Make	Depth	Type	Size	Qty	Make	Depth	Type	Size	Qty	Make
Guide Shoe					Packer					Top Plug	9 5/8	1	HES
Float Shoe					Bridge Plug					Bottom Plug			
Float Collar					Retainer					SSR plug set			
Insert Float										Plug Container	9 5/8	1HES	
Stage Tool										Centralizers			

## Miscellaneous Materials

Gelling Agt	Conc	Surfactant	Conc	Acid Type	Qty	Conc	%
Treatment Fld	Conc	Inhibitor	Conc	Sand Type	Size	Qty	

## Fluid Data

Stage/Plug #: 1									
Fluid #	Stage Type	Fluid Name	Qty	Qty uom	Mixing Density lbm/gal	Yield ft <sup>3</sup> /sk	Mix Fluid Gal/sk	Rate bbl/min	Total Mix Fluid Gal/sk

1	Water Spacer		20.00	bbl	.	.0	.0	.0	
2	Lead Cement	VERSACEM (TM) SYSTEM (452010)	120.0	sacks	12.3	2.38	13.75		13.75
	13.75 Gal	FRESH WATER							
3	Tail Cement	SWIFTCEM (TM) SYSTEM (452990)	120.0	sacks	14.2	1.43	6.88		6.72
	6.715 Gal	FRESH WATER							
4	Displacement		62.00	bbl	.	.0	.0	.0	
<b>Calculated Values</b>		<b>Pressures</b>		<b>Volumes</b>					
Displacement	62	Shut In: Instant		Lost Returns	0	Cement Slurry	81.3	Pad	
Top Of Cement	SURFACE	5 Min		Cement Returns	18	Actual Displacement	62	Treatment	
Frac Gradient		15 Min		Spacers	20	Load and Breakdown		Total Job	162.5
<b>Rates</b>									
Circulating		Mixing	6	Displacement	6	Avg. Job			6
Cement Left In Pipe	Amount	45.050 ft	Reason	Shoe Joint					
Frac Ring # 1 @	ID		Frac ring # 2 @	ID		Frac Ring # 3 @	ID		Frac Ring # 4 @
The Information Stated Herein Is Correct				Customer Representative Signature					

*The Road to Excellence Starts with Safety*

<b>Sold To #:</b> 343492	<b>Ship To #:</b> 2802178	<b>Quote #:</b>	<b>Sales Order #:</b> 7580300
<b>Customer:</b> BILL BARRETT CORPORATION E-BILL		<b>Customer Rep:</b> South, Jody	
<b>Well Name:</b> GGU FEDERAL		<b>Well #:</b> 42B-29-691	<b>API/UWI #:</b> 05-045-19626
<b>Field:</b> MAMM CREEK	<b>City (SAP):</b> Silt	<b>County/Parish:</b> Garfield	<b>State:</b> Colorado
<b>Legal Description:</b>			
<b>Lat:</b> N 39.497 deg. OR N 39 deg. 29 min. 48.052 secs.		<b>Long:</b> W 107.576 deg. OR W -108 deg. 25 min. 26.861 secs.	
<b>Contractor:</b> BARRETT		<b>Rig/Platform Name/Num:</b> PETRO PLUS	
<b>Job Purpose:</b> Cement Surface Casing			<b>Ticket Amount:</b>
<b>Well Type:</b> Development Well		<b>Job Type:</b> Cement Surface Casing	
<b>Sales Person:</b> METLI, MARSHALL		<b>Srv Supervisor:</b> KUKUS, CRAIG	<b>MBU ID Emp #:</b> 369124

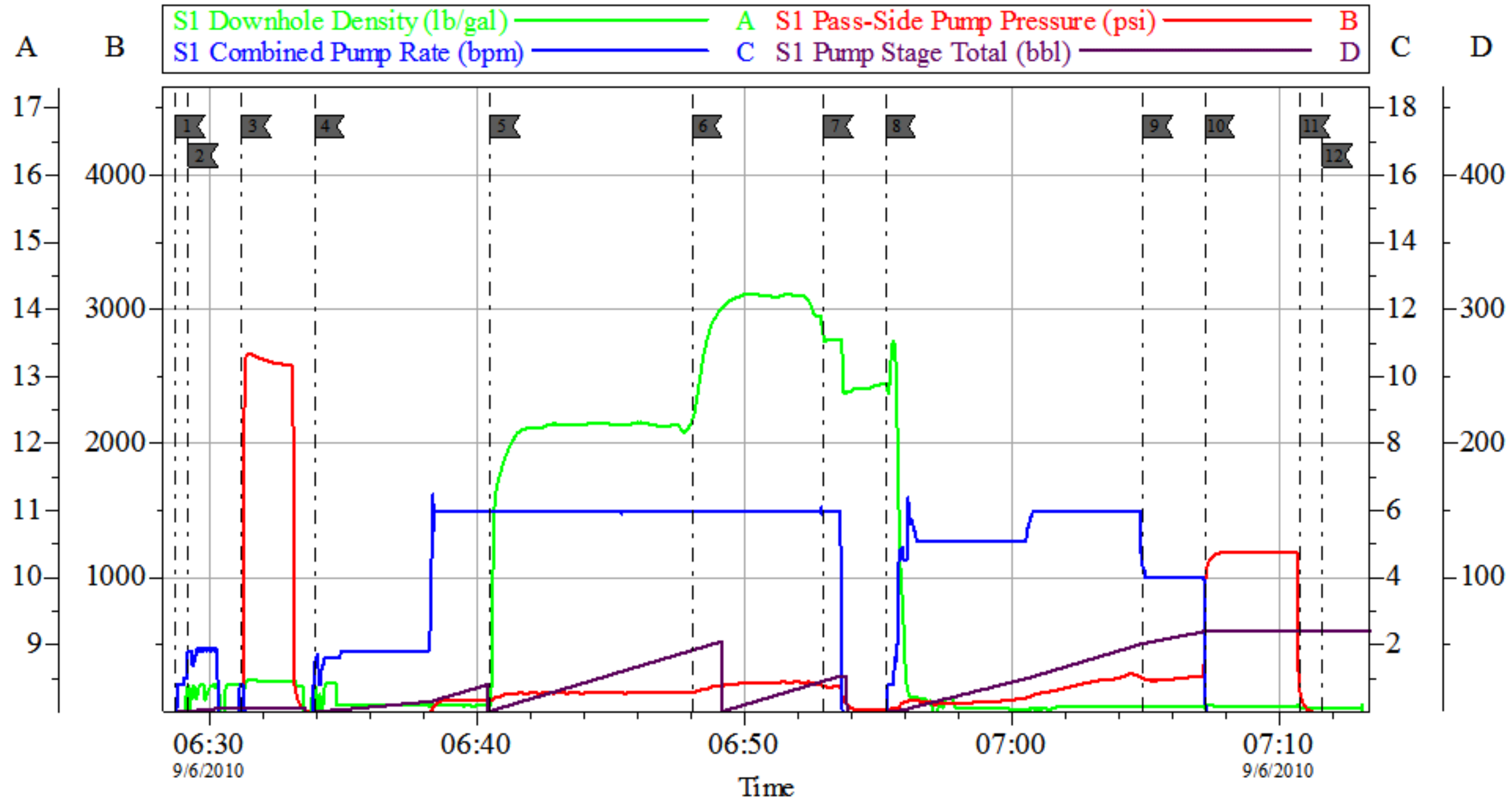
Activity Description	Date/Time	Cht #	Rate bbl/min	Volume bbl		Pressure psig		Comments
				Stage	Total	Tubing	Casing	
Call Out	09/06/2010 00:15							
Depart Yard Safety Meeting	09/06/2010 02:00							SAFETY MEETING INVOLVING THE ENTIRE CMT CREW
Arrive At Loc	09/06/2010 04:35							
Assessment Of Location Safety Meeting	09/06/2010 04:40							ASSESSMENT OF LOCATION INVOLVING THE ENTIRE CMT CREW
Pre-Rig Up Safety Meeting	09/06/2010 04:45							SAFETY MEETING INVOLVING THE ENTIRE CMT CREW
Rig-Up Equipment	09/06/2010 04:50							
Circulate Well	09/06/2010 04:50							RIG DID NOT CIRCULATE
Pre-Job Safety Meeting	09/06/2010 06:20							SAFETY MEETING INVOLVING EVERYONE ON LOCATION
Start Job	09/06/2010 06:28							T.D 855 T.P 836.15 9 5/8 PIPE J-55 36# MUD 8.33 HOLE 12 3/8
Other	09/06/2010 06:29		2	2			.0	FILL LINES
Pressure Test	09/06/2010 06:31		0.5			2660.0		PRESSURE TEST GOOD
Pump Spacer 1	09/06/2010 06:33		6	20			155.0	FRESH WATER SPACER
Pump Lead Cement	09/06/2010 06:40		6	50.86			220.0	PUMPED 120 SKS LEAD CEMENT AT 12.3 PPG 2.38 Y 13.77 GAL/SKS

## Cementing Job Log

Activity Description	Date/Time	Cht #	Rate bbl/ min	Volume bbl		Pressure psig		Comments
				Stage	Total	Tubing	Casing	
Pump Tail Cement	09/06/2010 06:48		6	30.5			230.0	PUMPED TAIL CEMENT AT 14.2 PPG 1.43 Y 6.85 GAL/SKS
Shutdown	09/06/2010 06:52							
Drop Top Plug	09/06/2010 06:52							PLUG LEFT THE PLUG CONTAINER
Pump Displacement	09/06/2010 06:55		6	61.15			275.0	PUMPED FRESH WATER DISPLACEMENT
Slow Rate	09/06/2010 07:04		4	51			250.0	LAST 10 BBL SLOWED RATE
Bump Plug	09/06/2010 07:07		4	62			1100. 0	PLUG LANDED
Check Floats	09/06/2010 07:10							FLOATS HELD/GOT 1/2 BBL BACK TO TANKS
End Job	09/06/2010 07:11							
Pre-Rig Down Safety Meeting	09/06/2010 07:17							SAFETY MEETING INVOLVING THE ENTIRE CMT CREW
Rig-Down Equipment	09/06/2010 07:20							
Safety Meeting - Departing Location	09/06/2010 08:20							SAFETY MEETING INVOLVING THE ENTIRE CMT CREW
Comment	09/06/2010 08:30							THANK YOU FOR USING HALLIBURTON, CRAIG KUKUS AND CREW

# BARRETT

## SURFACE 9 5/8



Local Event Log					
1	START JOB	06:28:44	2	PRIME LINES	06:29:13
3	TEST LINES	06:31:12	4	PUMP H2O SPACER	06:33:57
5	PUMP LEAD CMT	06:40:31	6	PUMP TAIL CMT	06:48:04
7	SHUT DOWN/DROP PLUG	06:52:58	8	PUMP DISPLACEMENT	06:55:19
9	SLOW RATE	07:04:56	10	BUMP PLUG	07:07:14
11	CHECK FLOATS	07:10:49	12	END JOB	07:11:39

Customer: BARRETT	Job Date: 06-Sep-2010	Sales Order #: 7580300
Well Description: GGU FED 42B-29-691	Job Type: SURFACE	ADC Used: YES
Company Rep: JODY SOUTH	Cement Supervisor: CRAIG KUKUS	Elite #/Operator: #11 DERICK CHASTAIN