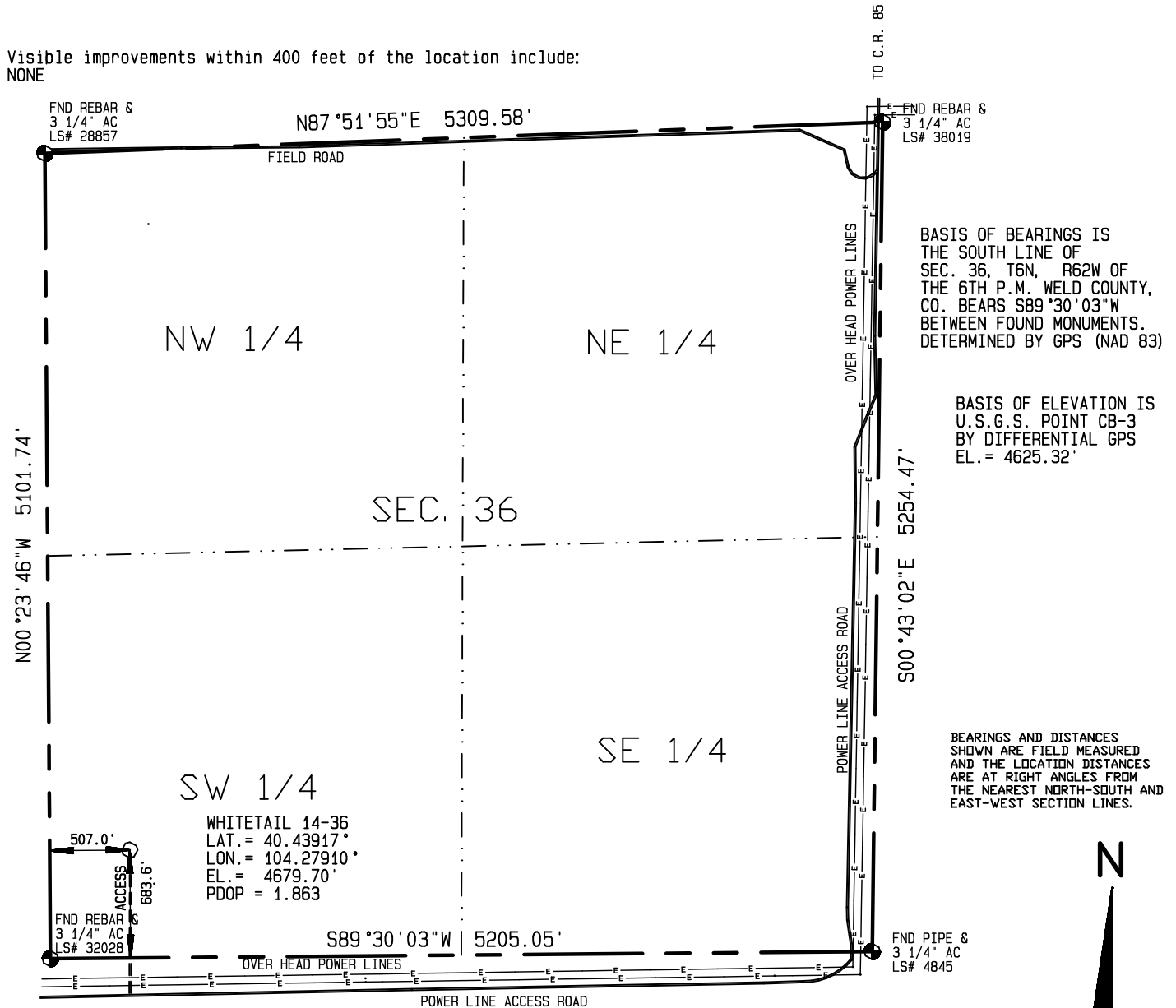
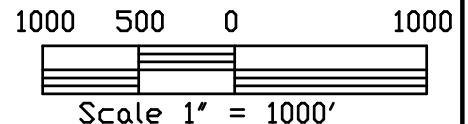


SURFACE HOLE LOCATION WHITETAIL 14-36 (STRAIGHT WELL)  
 WELL LAT. LONG. EL. FNL FWL  
 14-36 40.43917° 104.27910° 4679.70.' 683.6' 507.0'

Visible improvements within 400 feet of the location include:  
 NONE



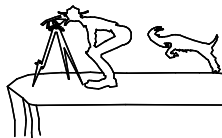
I HEREBY CERTIFY THAT THIS PLAT IS  
 AN ACCURATE REPRESENTATION OF A  
 CORRECT SURVEY SHOWING THE  
 LOCATION OF SAID WELLSITE:



Dan Griggs PLS# 38018

**CONTRACT SURVEYORS, LTD.**  
 COMPLETE SURVEYING AND GLOBAL POSITIONING

2133 SOUTH BELLAIRE STREET #14  
 DENVER COLORADO 80222  
 (303) 756-3695



DATE OF FIELD WORK:

SEPTEMBER 22, 2010

DATE OF DRAWING:

SEPTEMBER 23, 2010

WHITETAIL 14-36

SW 1/4 SW 1/4 SEC. 36, T6N, R62W

BONANZA CREEK ENERGY OPERATING COMPANY, LLC

WELD COUNTY, COLORADO

CSL# 10104-66