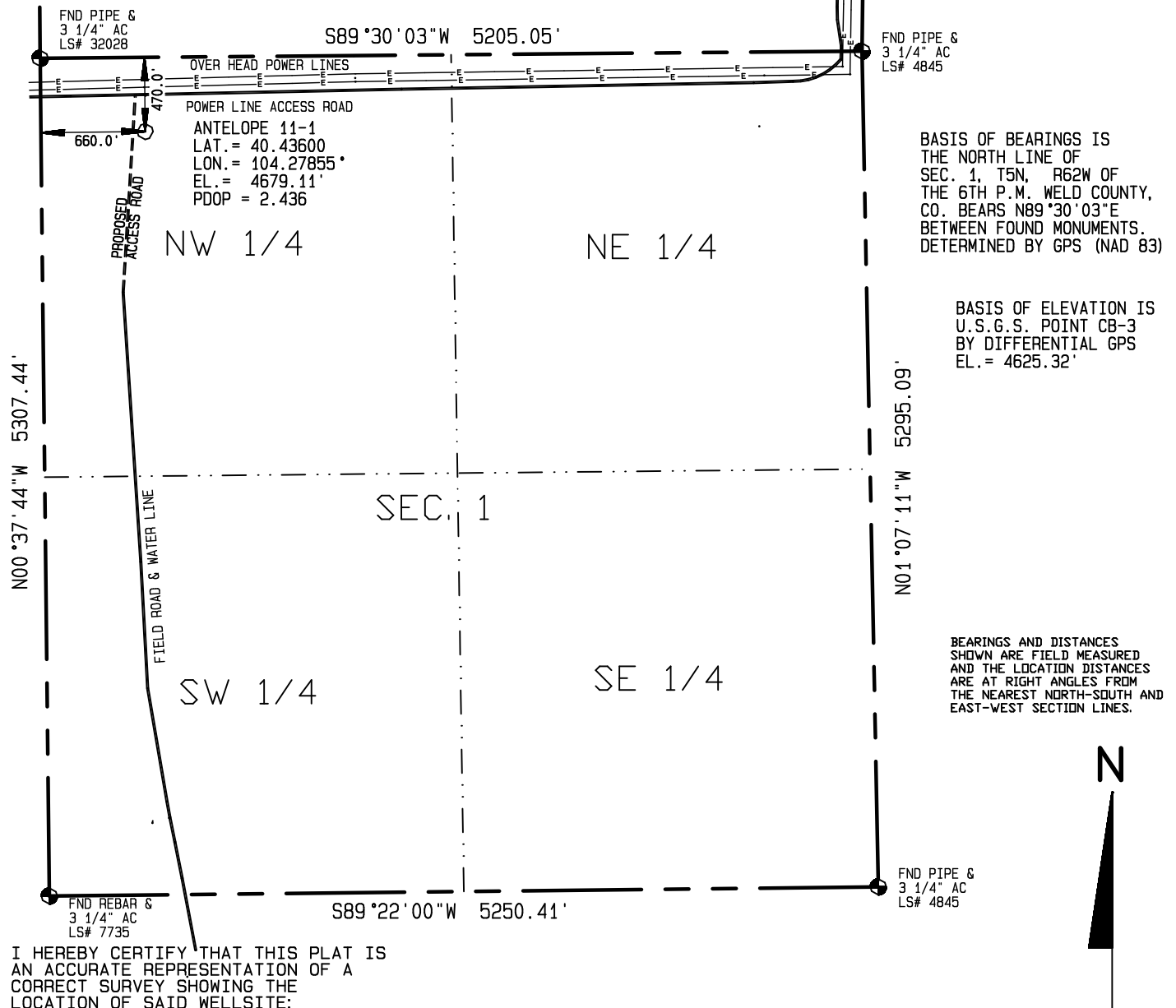
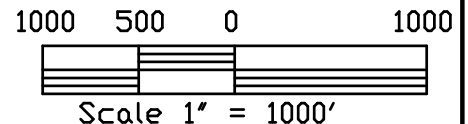


SURFACE HOLE LOCATION ANTELOPE 14-1 (STRAIGHT WELL)
 WELL LAT. LONG. EL. FNL FWL
 11-1 40.43600° 104.27852° 4679.11' 470.0' 660.0'

Visible improvements within 400 feet of the location include:
 High voltage over head power lines pass 281 to the north
 The power line access road passes 227' north of the site.



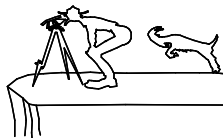
I HEREBY CERTIFY THAT THIS PLAT IS
 AN ACCURATE REPRESENTATION OF A
 CORRECT SURVEY SHOWING THE
 LOCATION OF SAID WELLSITE:



Dan Griggs PLS# 38018

CONTRACT SURVEYORS, LTD.
 COMPLETE SURVEYING AND GLOBAL POSITIONING

2133 SOUTH BELLAIRE STREET #14
 DENVER COLORADO 80222
 (303) 756-3695



DATE OF FIELD WORK:

SEPTEMBER 22, 2010

DATE OF DRAWING:

SEPTEMBER 23, 2010

ANTELOPE 11-1

NW 1/4 NW 1/4 SEC. 1, T5N, R62W

BONANZA CREEK ENERGY OPERATING COMPANY, LLC

CSL# 10104-67

WELD COUNTY, COLORADO