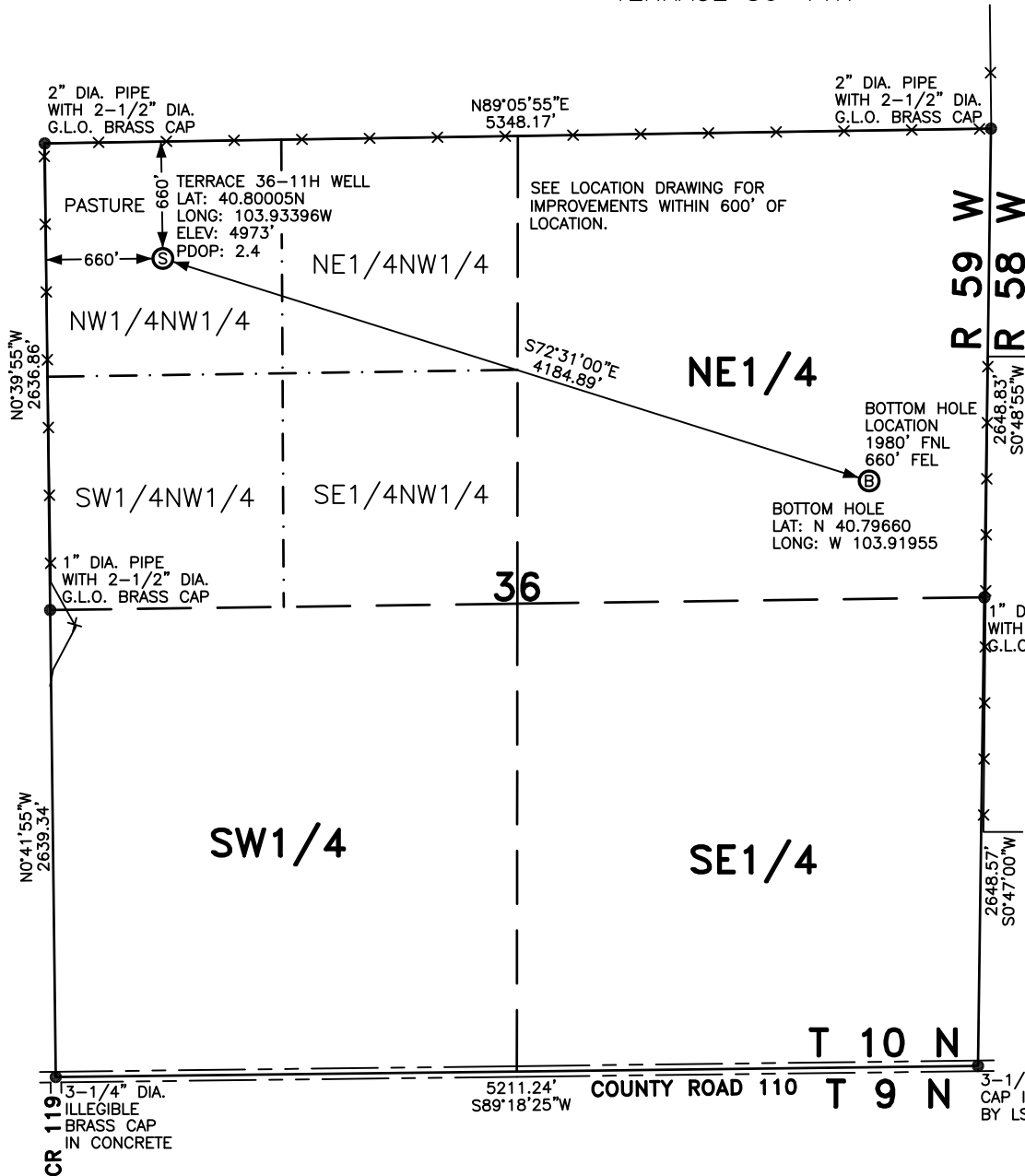


# WELL LOCATION FOR WHITING OIL AND GAS CORPORATION

TERRACE 36-11H



## NOTES

BEARINGS SHOWN HEREON ARE BASED UPON RTK GPS OBSERVATIONS

SEE LOCATION DRAWING FOR IMPROVEMENTS WITHIN 600' OF LOCATION.

USGS QUAD MAP: PAWNEE BUTTES, COLO.

LAT/LONG VALUES ARE NAD83

ELEVATIONS BASED UPON NGS OPUS SOLUTION NAVD 88 DATUM

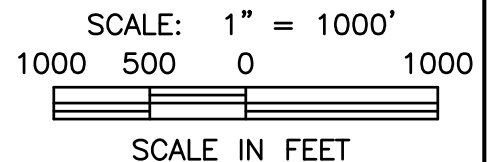
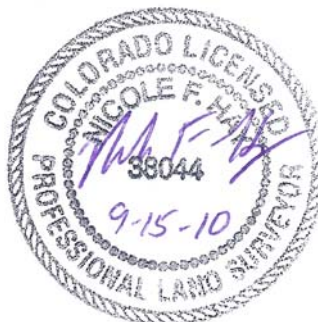
ALL DISTANCES TO SECTION LINES ARE MEASURED PERPENDICULAR TO AND ARE AT RIGHT ANGLES TO SAID SECTION LINES.

## LEGEND

- ⊙ FIELD SURVEYED WELL LOCATION
- ⊙ FIELD SURVEYED BOTTOM HOLE LOCATION

- == == == ROAD
- x-x- FENCE

THIS WELL LOCATION PLAT HAS BEEN PREPARED FOR WHITING OIL AND GAS CORPORATION, TO LOCATE THE TERRACE 36-11H WELL BEING 660 FEET FROM THE WEST LINE AND 660 FEET FROM THE NORTH LINE IN THE NW1/4NW1/4 OF SECTION 36, TOWNSHIP 10 NORTH, RANGE 59 WEST OF THE 6TH P.M., WELD COUNTY, COLORADO. THE SURFACE ELEVATION AT THIS POINT IS 4973 FEET. THIS IS NOT A LAND SURVEY PLAT.



## LEIBERT-McATEE & ASSOCIATES, INC.

P.O. BOX 442 615 SOUTH TENTH AVENUE  
STERLING, CO 80751 970-522-1960

FIELD DATE: 9-10-10	DWG DATE: 9-15-10	GPS OPERATOR: TIM LEIBERT
TERRACE 36-11H	DWG NO. 981-10	SHEET 1 OF 1