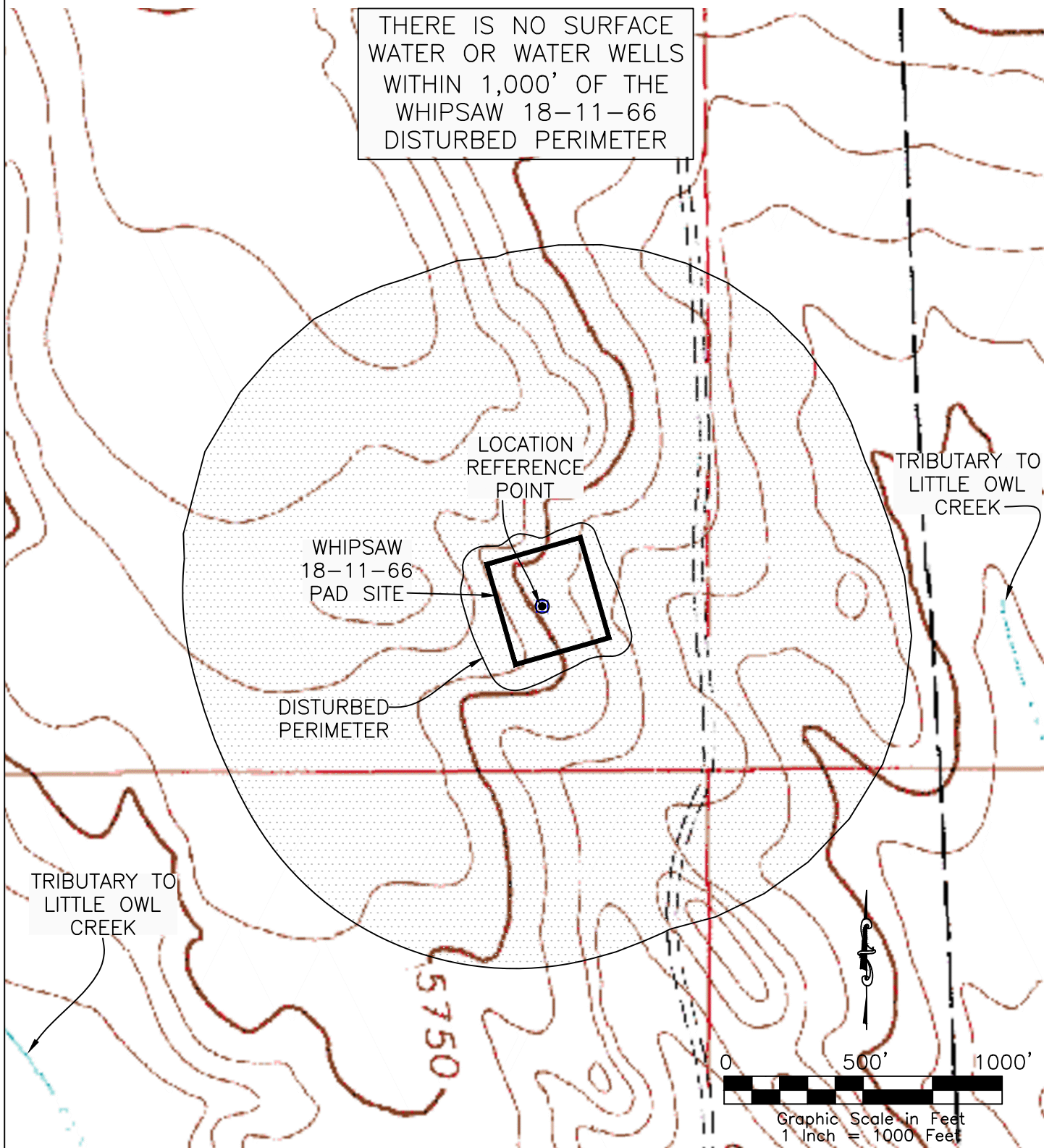


HYDROLOGY MAP
WHIPSAW 18-11-66

THERE IS NO SURFACE
WATER OR WATER WELLS
WITHIN 1,000' OF THE
WHIPSAW 18-11-66
DISTURBED PERIMETER




WESTERN LAND SERVICES
Sheridan, WY 82801 (307)673-1817

DP: L:\Sawson\Permitting_Booklets\Whipsa..Date: 9/24/2010

SLAWSON EXPLORATION COMPANY, INC
WHIPSAW 18-11-66

SL: SE1/4 SE1/4, SECTION 18, T11N R66W
BL: NW1/4 NE1/4, SECTION 18, T11N R66W
6TH PM, WELD COUNTY, COLORADO