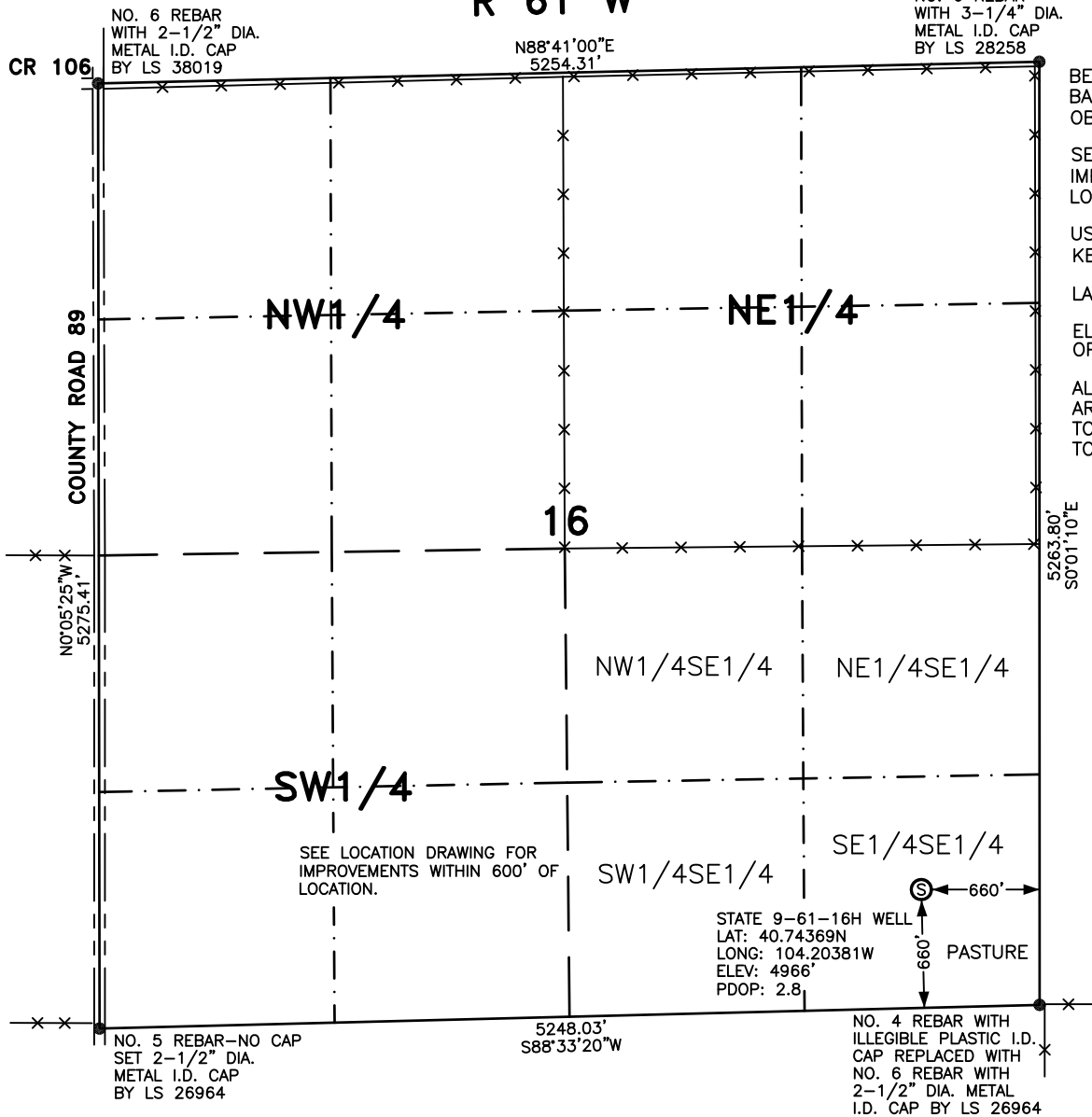


WELL LOCATION FOR ANTELOPE ENERGY COMPANY, LLC

STATE 9-61-16H

R 61 W



NOTES

BEARINGS SHOWN HEREON ARE BASED UPON RTK GPS OBSERVATIONS

SEE LOCATION DRAWING FOR IMPROVEMENTS WITHIN 600' OF LOCATION.

USGS QUAD MAP: KEOTA NW, COLO.

LAT/LONG VALUES ARE NAD83

ELEVATIONS BASED UPON NGS OPUS SOLUTION NAVD 88 DATUM

ALL DISTANCES TO SECTION LINES ARE MEASURED PERPENDICULAR TO AND ARE AT RIGHT ANGLES TO SAID SECTION LINES.

LEGEND

⊙ FIELD SURVEYED WELL LOCATION

== == == ROAD

-x-x- FENCE



SCALE: 1" = 1000'



SCALE IN FEET

THIS WELL LOCATION PLAT HAS BEEN PREPARED FOR ANTELOPE ENERGY COMPANY, LLC, TO LOCATE THE STATE 9-61-16H WELL BEING 660 FEET FROM THE EAST LINE AND 660 FEET FROM THE SOUTH LINE IN THE SE1/4SE1/4 OF SECTION 16, TOWNSHIP 9 NORTH, RANGE 61 WEST OF THE 6TH P.M., WELD COUNTY, COLORADO. THE SURFACE ELEVATION AT THIS POINT IS 4966 FEET. THIS IS NOT A LAND SURVEY PLAT.



LEIBERT-McATEE & ASSOCIATES, INC.

P.O. BOX 442 615 SOUTH TENTH AVENUE
STERLING, CO 80751 970-522-1960

FIELD DATE: 9-1-10

DWG DATE: 9-13-10

GPS OPERATOR:
DARREN VEAL

STATE 9-61-16H

DWG NO. 1050-10

SHEET 1 OF 1