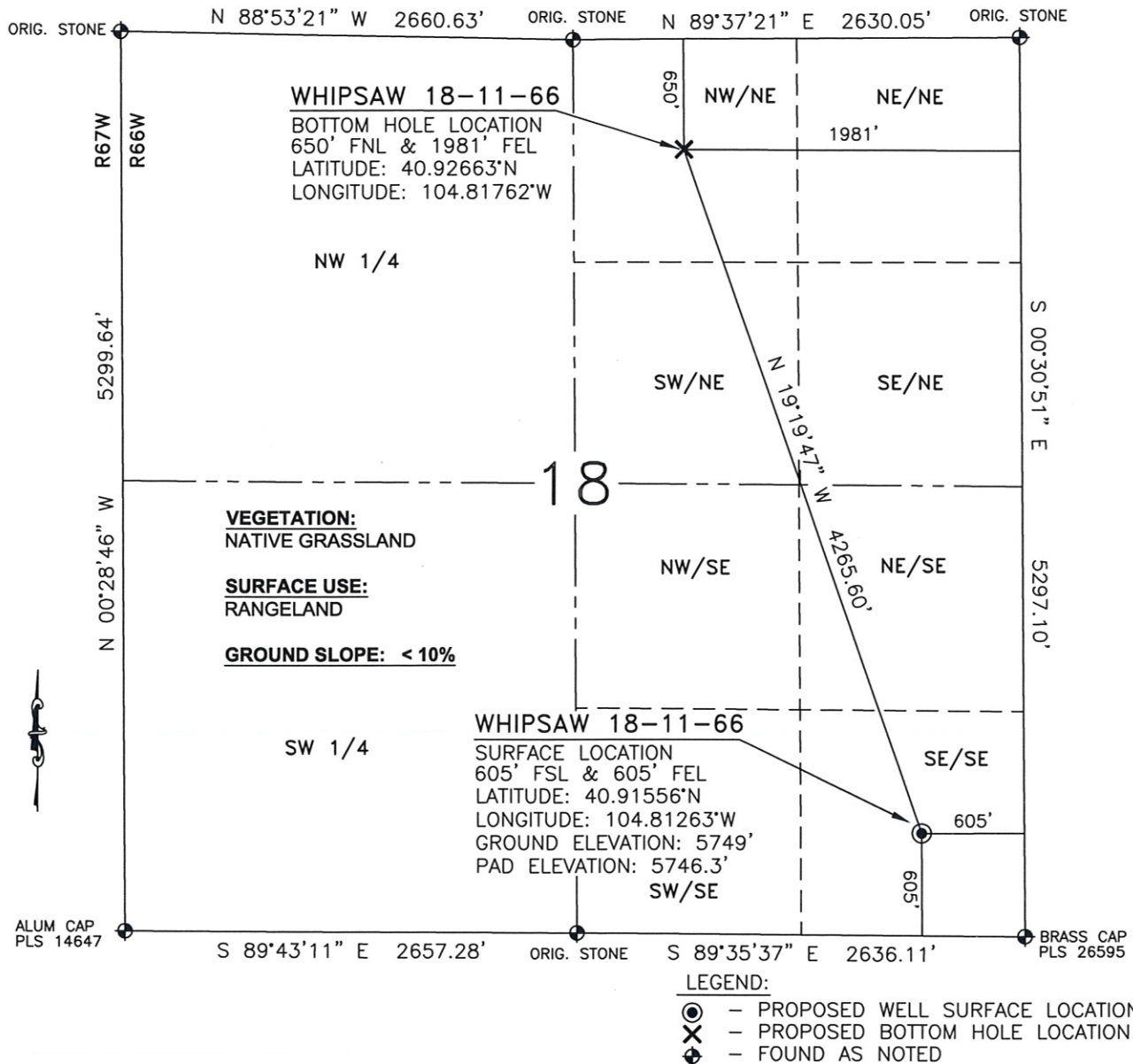


WELL LOCATION MAP

WHIPSAW 18-11-66



I, JASON D. LEVANEN, A DULY REGISTERED LAND SURVEYOR IN THE STATE OF COLORADO, DO HEREBY CERTIFY THAT THIS PLAT WAS PREPARED FROM NOTES TAKEN DURING A SURVEY PERFORMED BY ME OR UNDER MY SUPERVISION ON MAY 05, 2010.

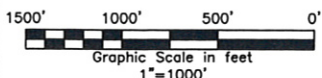


NOTES:

- 1) Horizontal and vertical coordinates based from NGS CORS station "COFC", with an elevation of 5285.90'.
- 2) Basis of bearings are Colorado State Plane north zone. Distances are ground NAD 83, NAVD 88. PAF: 1.000251
- 3) All section line dimensions shown hereon are based on field measurements of existing monuments and/or physical evidence found in the field unless otherwise indicated. Refer to land survey plats deposited in Weld County
- 4) Physical features shown hereon are for graphical representation only.
- 5) See form 2A for visible improvements within 400' of the wellhead
- 6) Distances to nearest section lines are measured perpendicularly.
- 7) This is not a land survey nor land survey plat.
- 8) Date of survey 5/05/10; Date of Drawing 7/21/10. REV 1 PDOP Reading 2.7 Instrument Operator Nick Roadifer

SLAWSON EXPLORATION
 COMPANY, INC.
 WHIPSAW 18-11-66

SL: SE1/4SE1/4, S.18, T11N-R66W
 BL: NW1/4NE1/4, S.18, T11N-R66W
 6TH P.M., WELD COUNTY, COLORADO



WESTERN LAND SERVICES

Sheridan, WY 82801 (307)673-1817 Date: 7-21-10

DP: L:\Slawson\Well Plats\Well_Plats.dwg

Rev: 9-24-10