



Baker Atlas

File No: **1750** Company: **MARATHON OIL COMPANY**
 Well: **696-5C-15**
 Field: **GRAND VALLEY**
 County: **GARFIELD** State: **COLORADO**
 API No: **05045133920000**

Location: **SHL: 3483' FNL & 1319' FWL**
 Other Services: **3.781" GAUGE NEUTRON LOG**
 SEC **5** TWP **6S** RGE **96W**

Permanent Datum: **G.L. _____ Elevation 8129 ft**
 Log Measured From: **K.B. _____ 24 ft Above P. D.**
 Drill Measured From: **KELLY BUSHING**
 Elevations: **KB 8153 ft, DF 8152 ft, GL 8129 ft**

Date	19-APR-2010
Run	ONE
Service Order	578798
Depth Driller	10240 ft
Depth Logger	10193 ft
Bottom Logged Interval	10193 ft
Top Logged Interval	6600 ft
Time Started	17:30
Time Finished	22:30
Operator Rig Time	5 hrs
Type of Fluid in Hole	WATER
Fluid Density	N/A
Salinity	N/A
Fluid Level	FULL
Logged Cement Top	N/A
Wellhead Pressure	1000 psi
Maximum Hole Deviation	N/A
Nominal Logging Speed	30 fpm
Maximum Recorded Temperature	254 degF
Reference Log	N/A
Reference Log Date	N/A
Equipment No.	4271
Recorded By	OSTLER/MEISER
Witnessed By	MR. DOUG EPPERSON
Location	VERNAL, UT

- FOLD HERE

In making interpretations of logs, our employees will give the customer the benefit of their best judgement. But since all interpretations are opinions based on inferences from electrical or other measurements, we cannot, and we do not guarantee the accuracy or correctness of any interpretation. We shall not be liable or responsible for any loss, cost, damages, or expenses whatsoever incurred or sustained by the customer resulting from any interpretation made by any of our employees.

Bit Size	From	To
14.75 In	SURFACE	2316 ft
8.75"/7.875"	2316 ft	10310 ft

Size	Weight	Grade	From	To
9.625 In	36 lbm/ft	J-55	SURFACE	2316 ft
4.5 In	11.6 lbm/ft	P-110	SURFACE	10310 ft

Remarks

THIS IS THE FIRST LOG OF THE WELL.
 WELL WAS LOGGED WITH 1000 psi AT THE WELLHEAD.
 SHORT JOINTS @ 6923'-6944' AND 8471'-8491'.
 BHT = 254 degF.

Equipment Data

Run	Trip	Tool	Series Number	Serial Number	Position
1	1	VDL	1426XA	10154957	CENTRALIZED
1	1	GR/CCL/NEU	2459XA	10417457	CENTRALIZED

MAIN SECTION

MEASUREMENT TYPE	PARAMETER	VALUE	UNITS	TOP	BOTTOM
RAL	Amp Gate Start Far	316.900	usec	303.625	10208.000
RAL	Amp Gate Start Near	200.391	usec	303.625	10208.000
RAL	Amp Gate Start Radial	200.391	usec	303.625	10208.000
RAL	Amp Gate Width Far	25.000	usec	303.625	10208.000
RAL	Amp Gate Width Near	25.000	usec	303.625	10208.000
RAL	Amp Gate Width Radial	25.000	usec	303.625	10208.000
RAL	casing od	4.500	inches	303.625	10208.000
RAL	casing wt	11.600	lbm/ft	303.625	10208.000
RAL	FB Start Far	291.900	usec	303.625	10208.000
RAL	FB Start Near	175.391	usec	303.625	10208.000
RAL	FB Start Radial	175.391	usec	303.625	10208.000
RAL	FB Thresh Far	10.000	mv	303.625	10208.000
RAL	FB Thresh Near	4.000	mv	303.625	10208.000
RAL	FB Thresh Radial	4.000	mv	303.625	10208.000
RAL	Fluid Travel Time	200.000	usec/ft	303.625	10207.750

DEPTH OFFSETS

(for Acquired Curves)

SERIES	DEPTH OFFSET	ACQUIRED CURVES							
1426XA	-15.360	ACAL	ANR	AR1	AR2	AR3	AR4		
		AR5	AR6	AR7	ARB	CHV	FPR2		
		FPR3	FPR5	TT3	TTR1	TTR2	TTR3		
		TTR4	TTR5	TTR6	TTR7	TTR8	XAMP		
1426XA	-14.360	AFAR	SIG	TT5					
1426XA	-7.250	CCL							
1426XA	-5.390	GR							
1426XA	0.000	NEU							

Created by : RAL, v4.8.007

Plotted by : PlotMgr, v5.4.504

Company : MARATHON OIL COMPANY

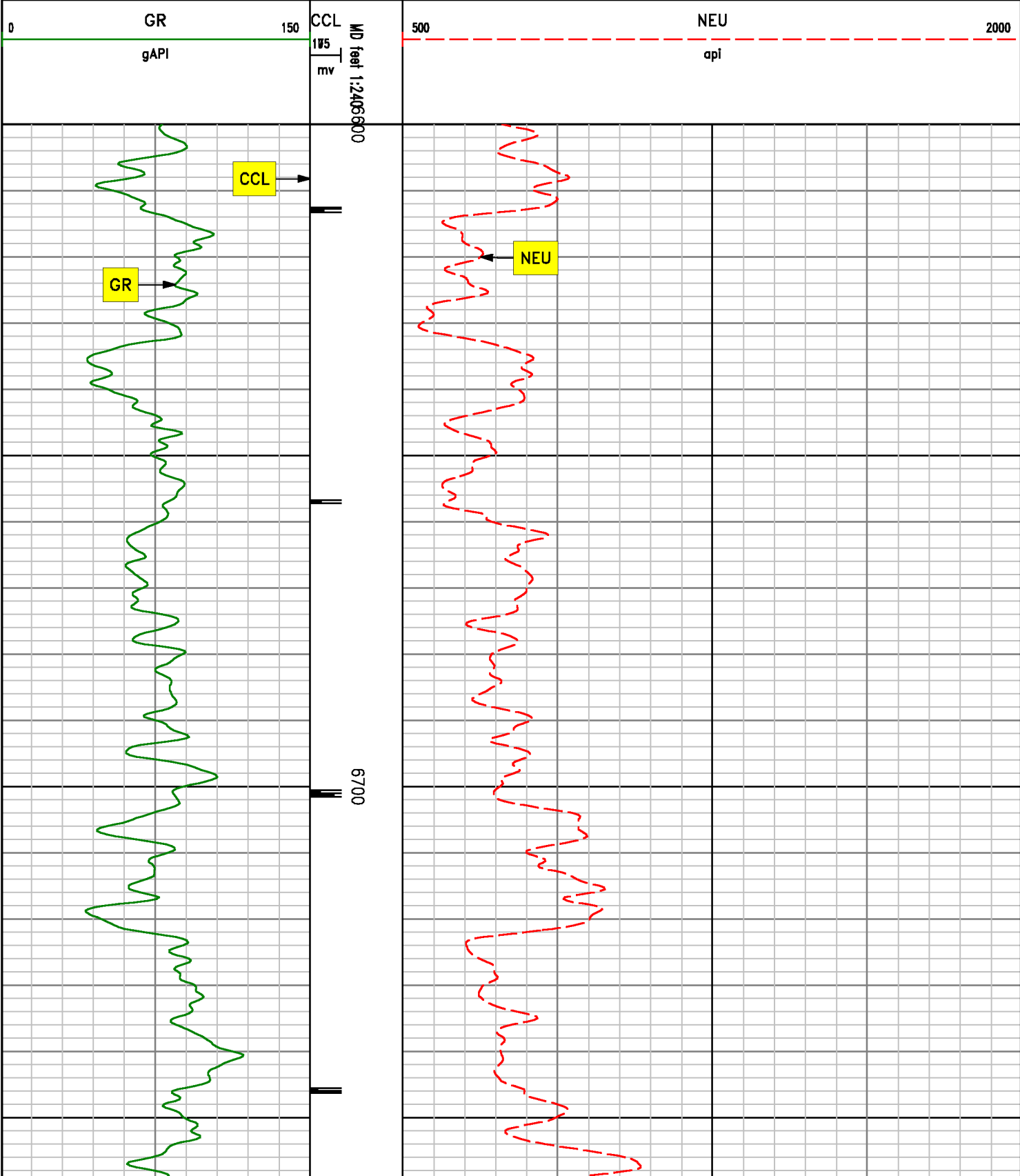
Well : 696-5C-15

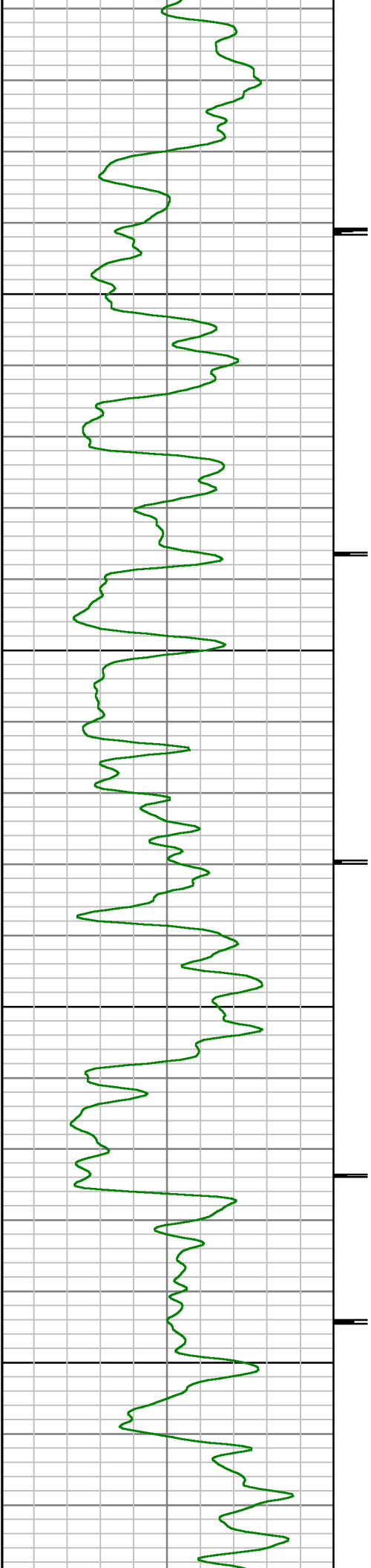
File Name : d:\welldata\15rad\main_f.xtf

Mode : PlotMgr 5.4.504

Interval : 6600.00 - 10200.00 feet UP

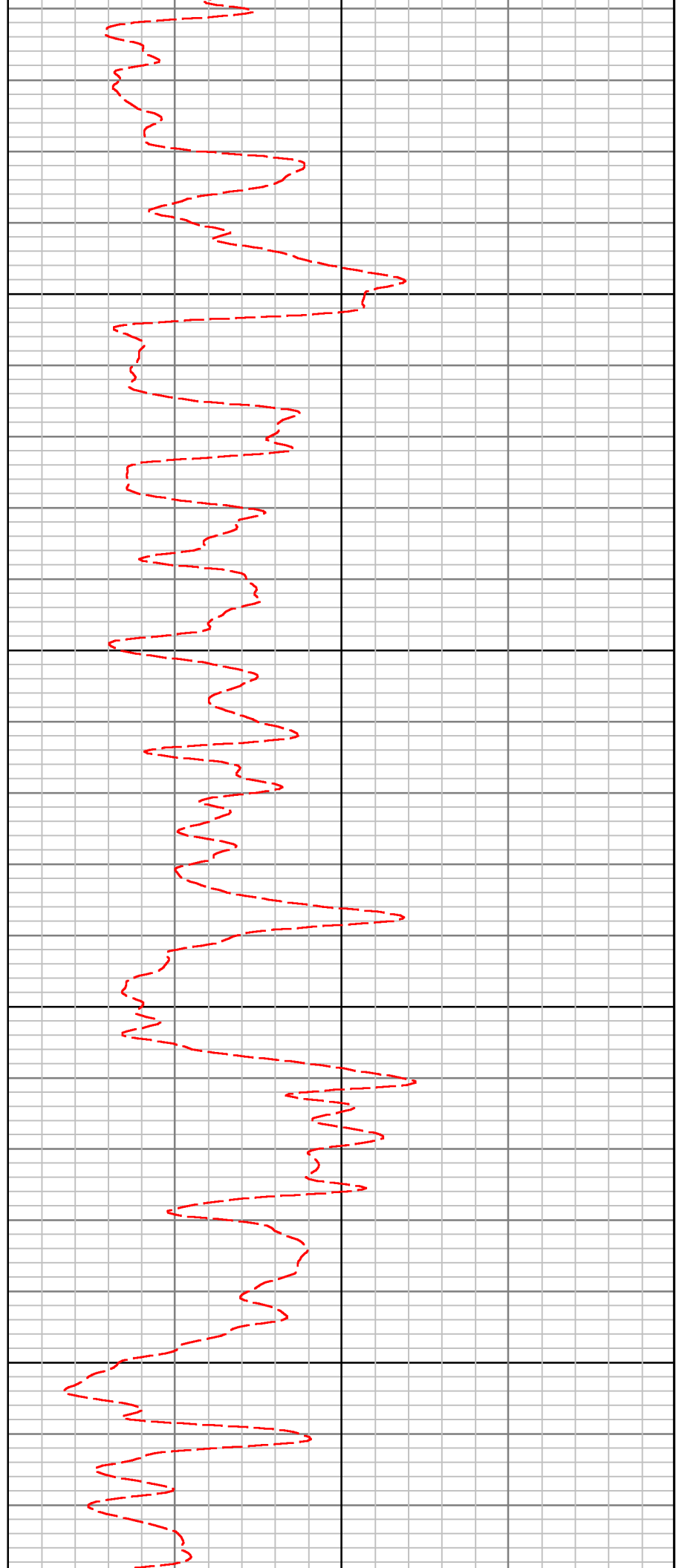
Created : 4/19/2010 6:29:41 PM

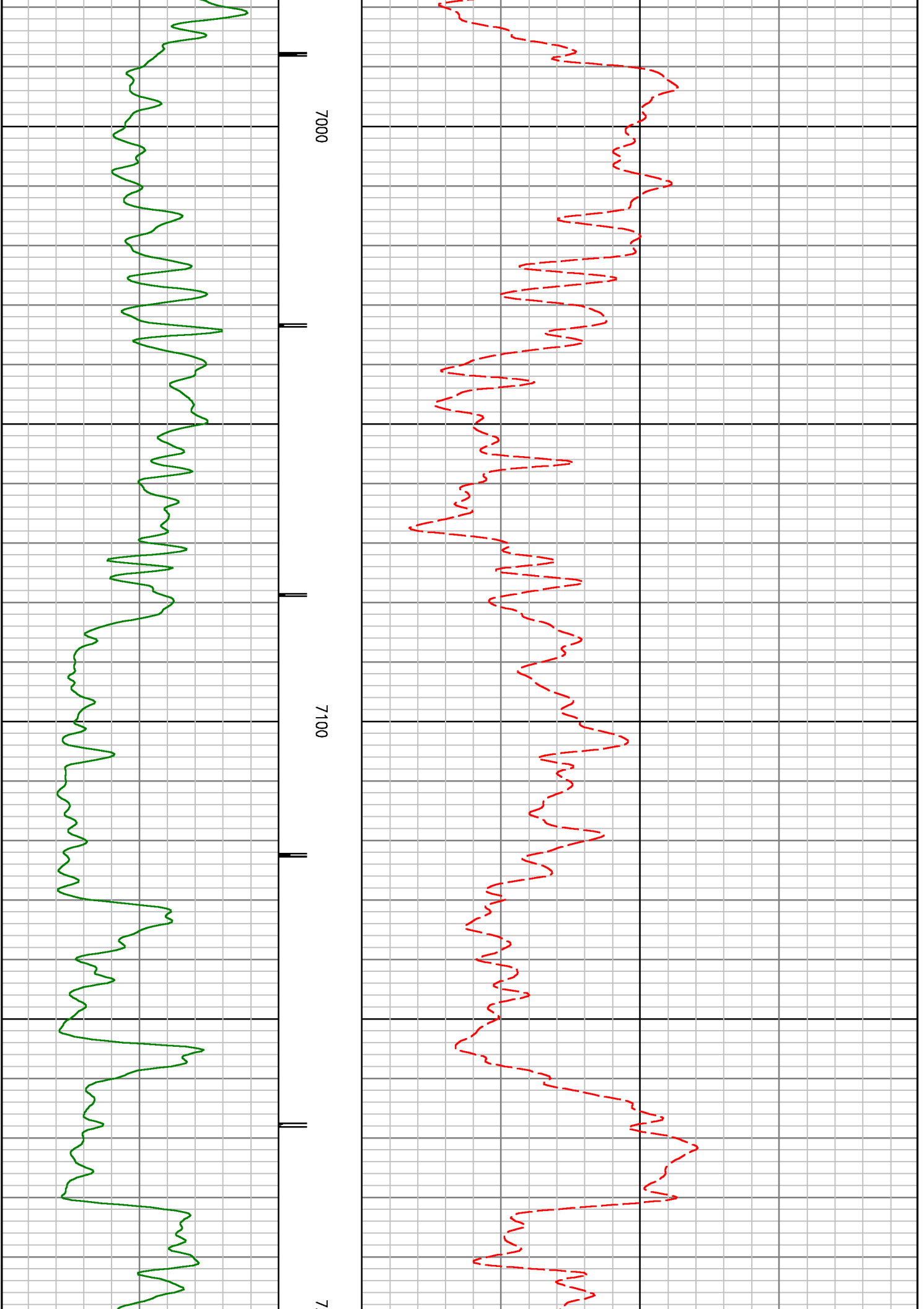


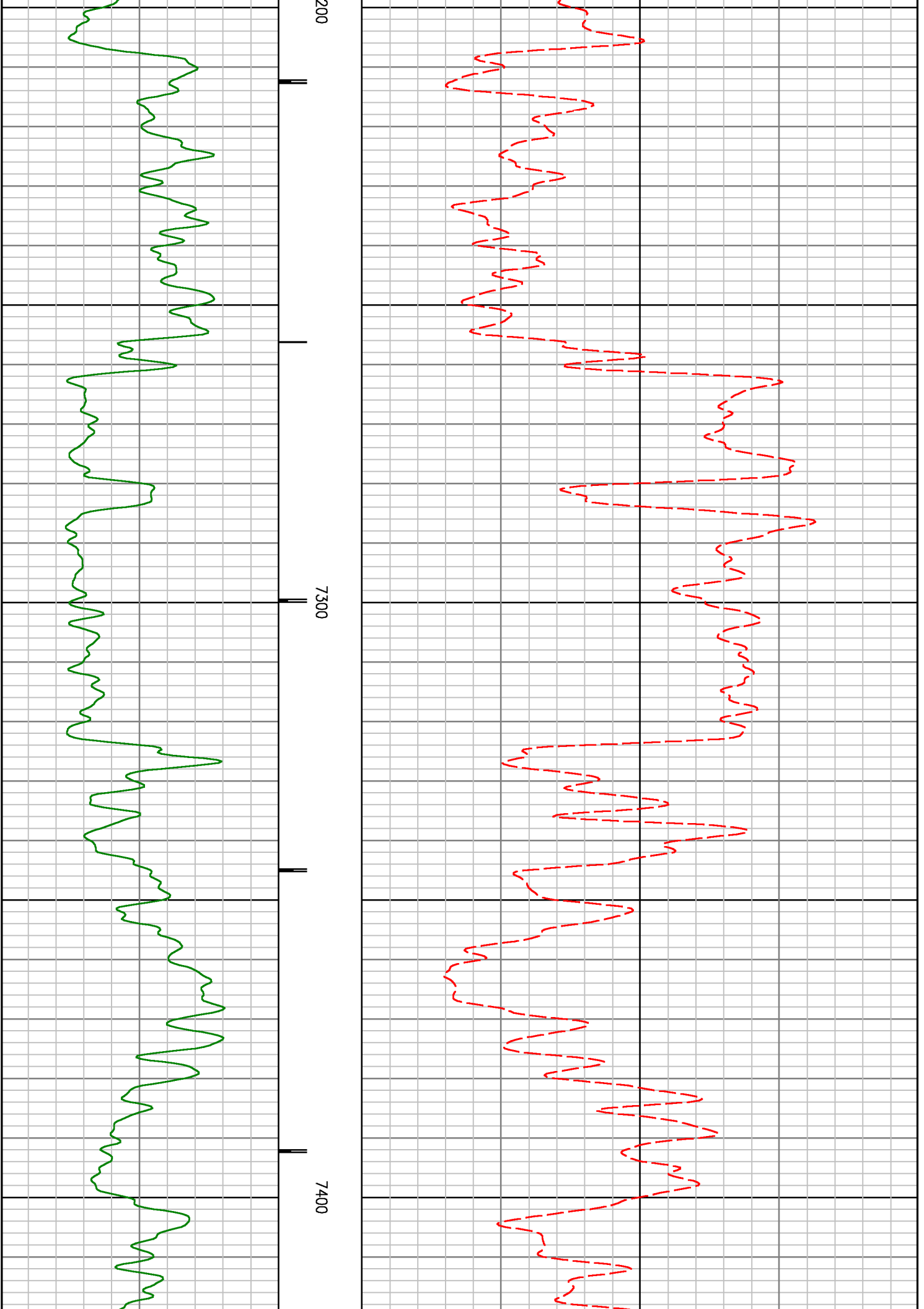


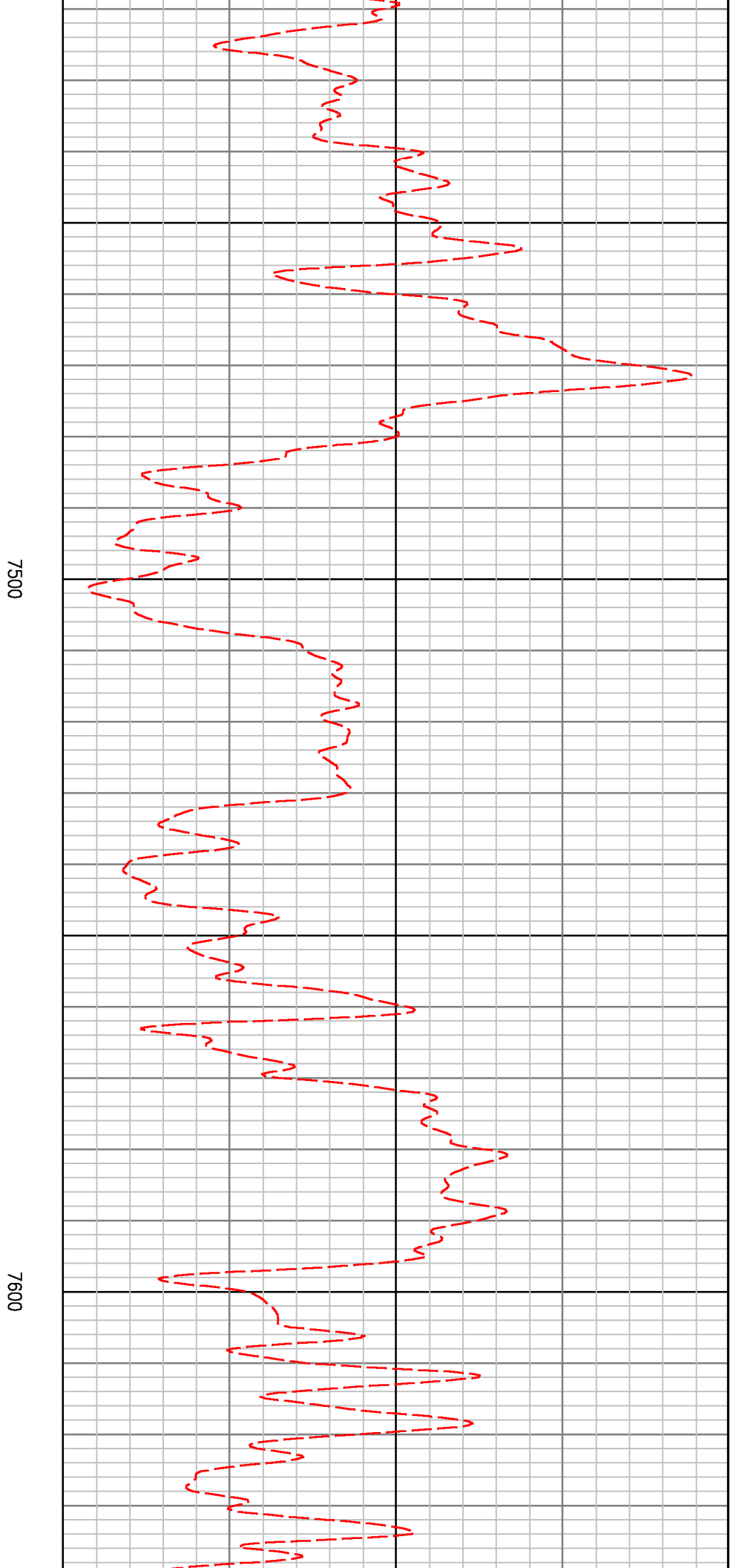
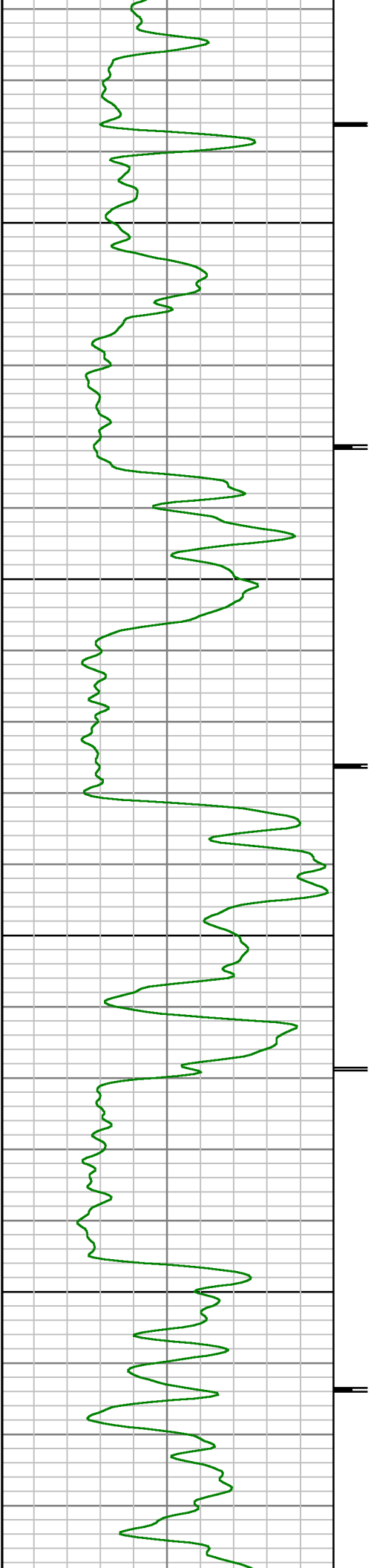
0089

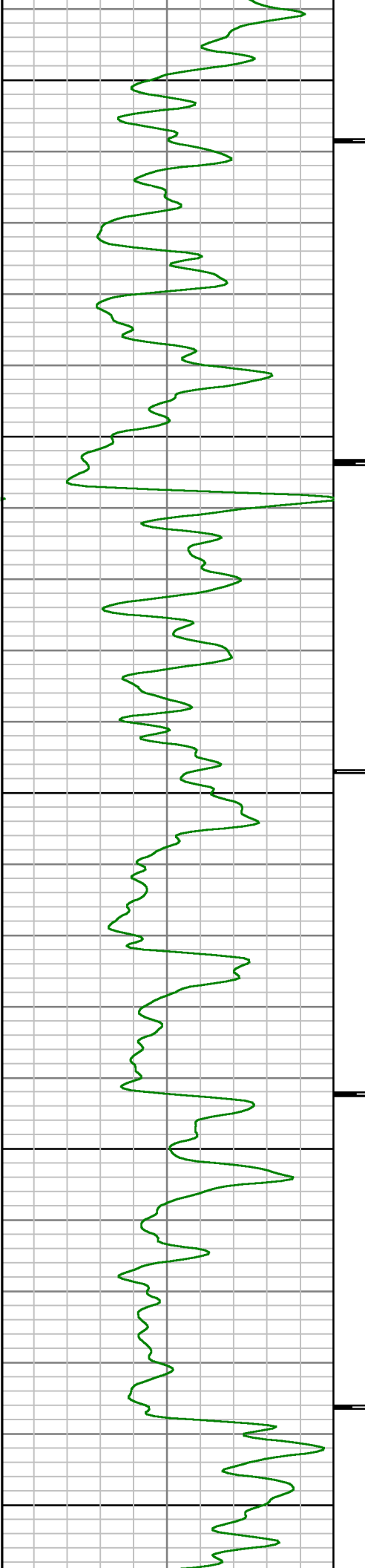
6900





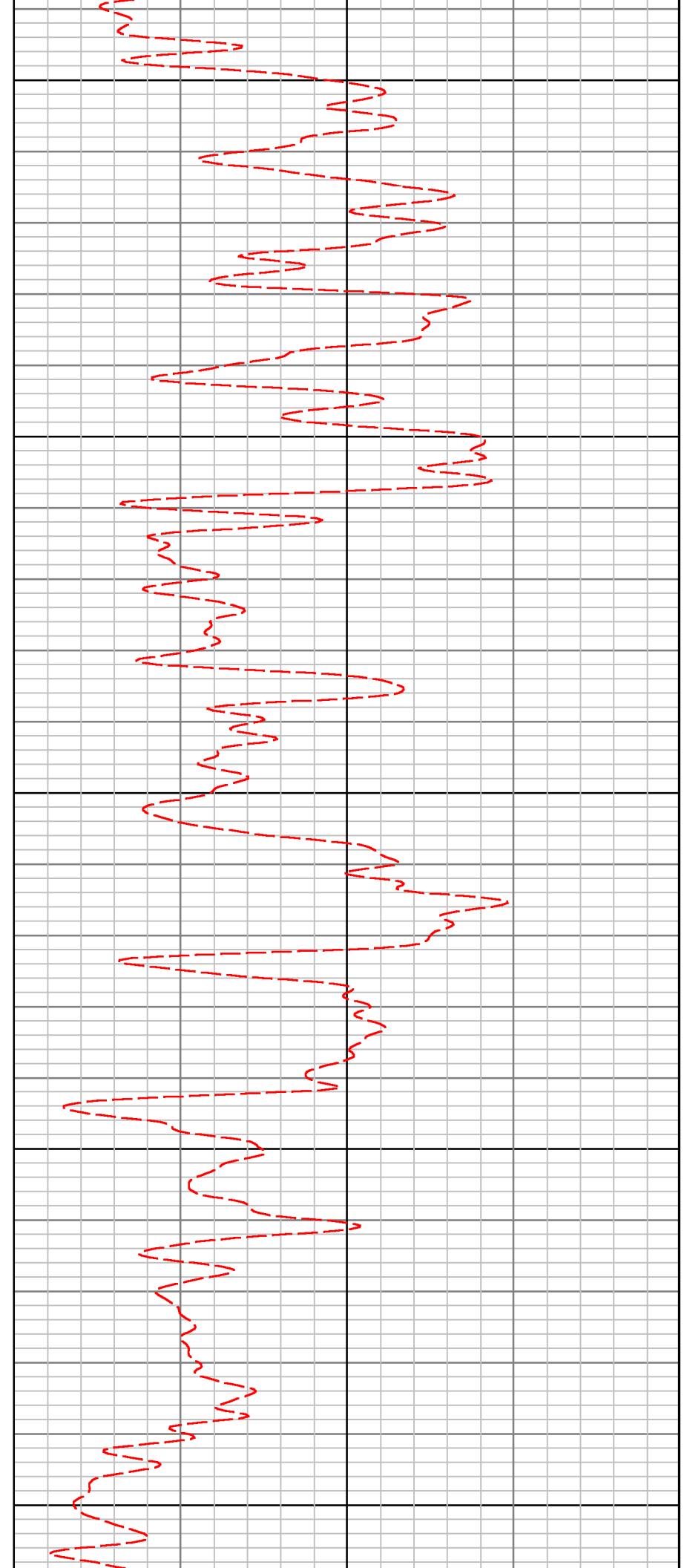


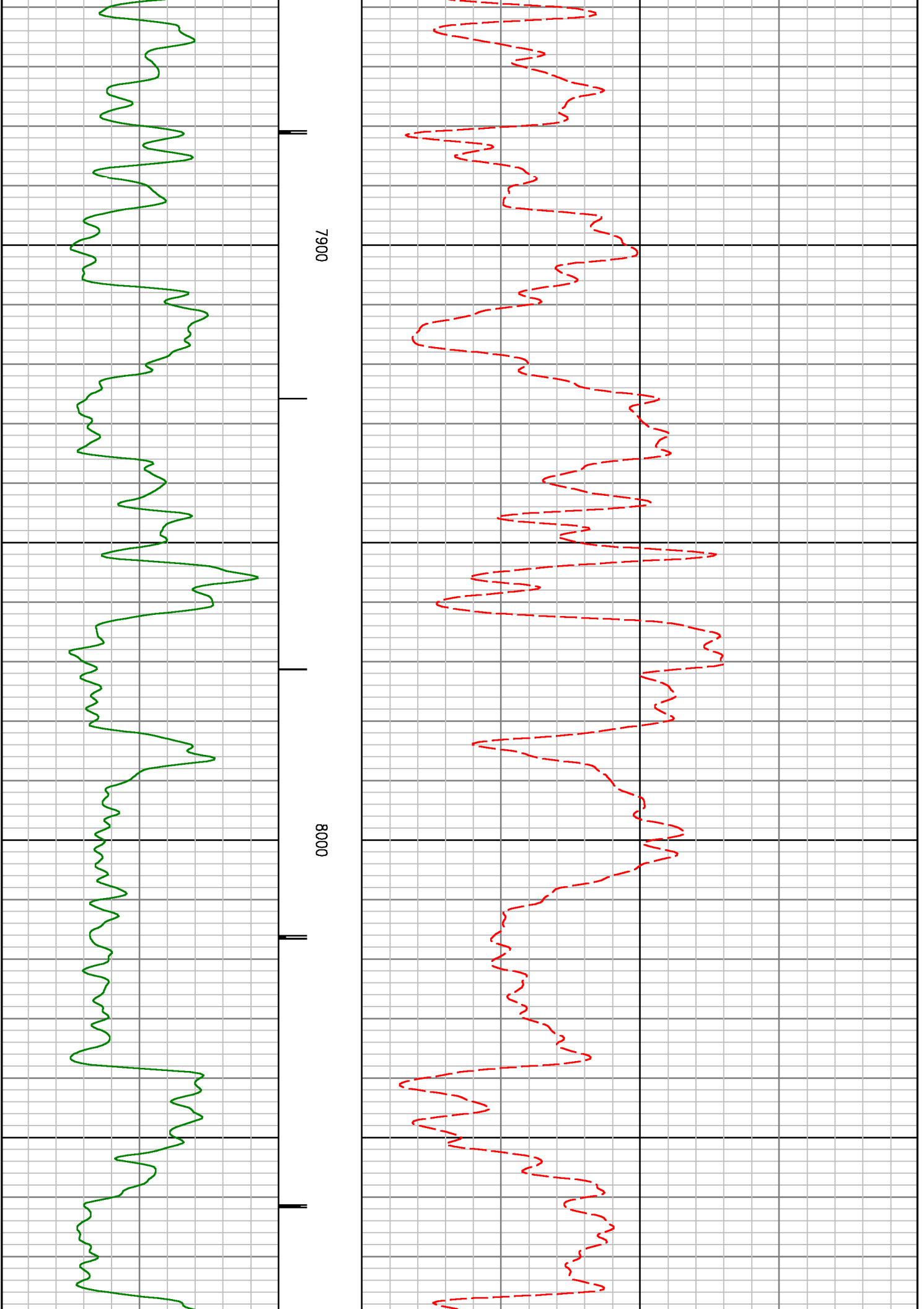


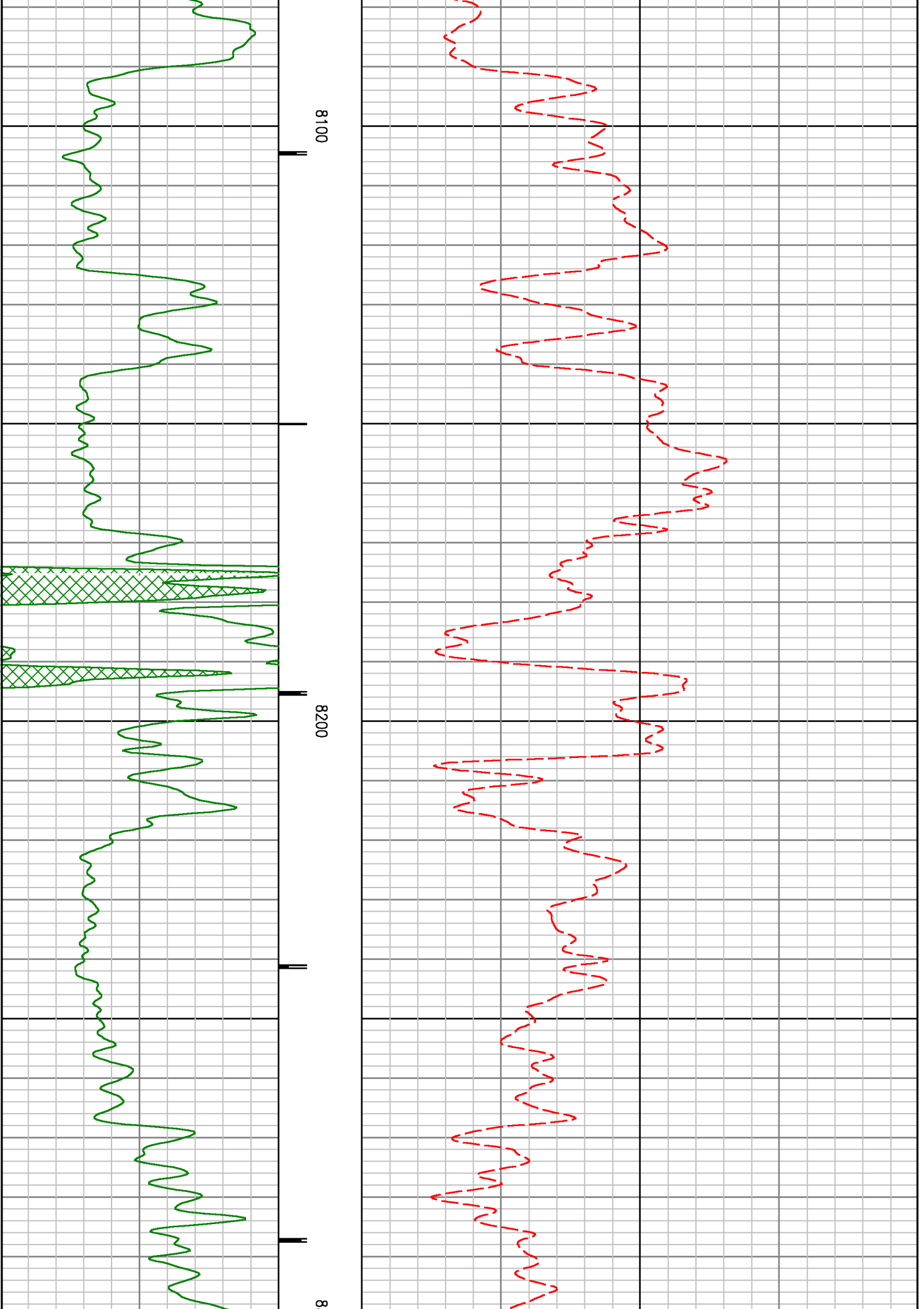


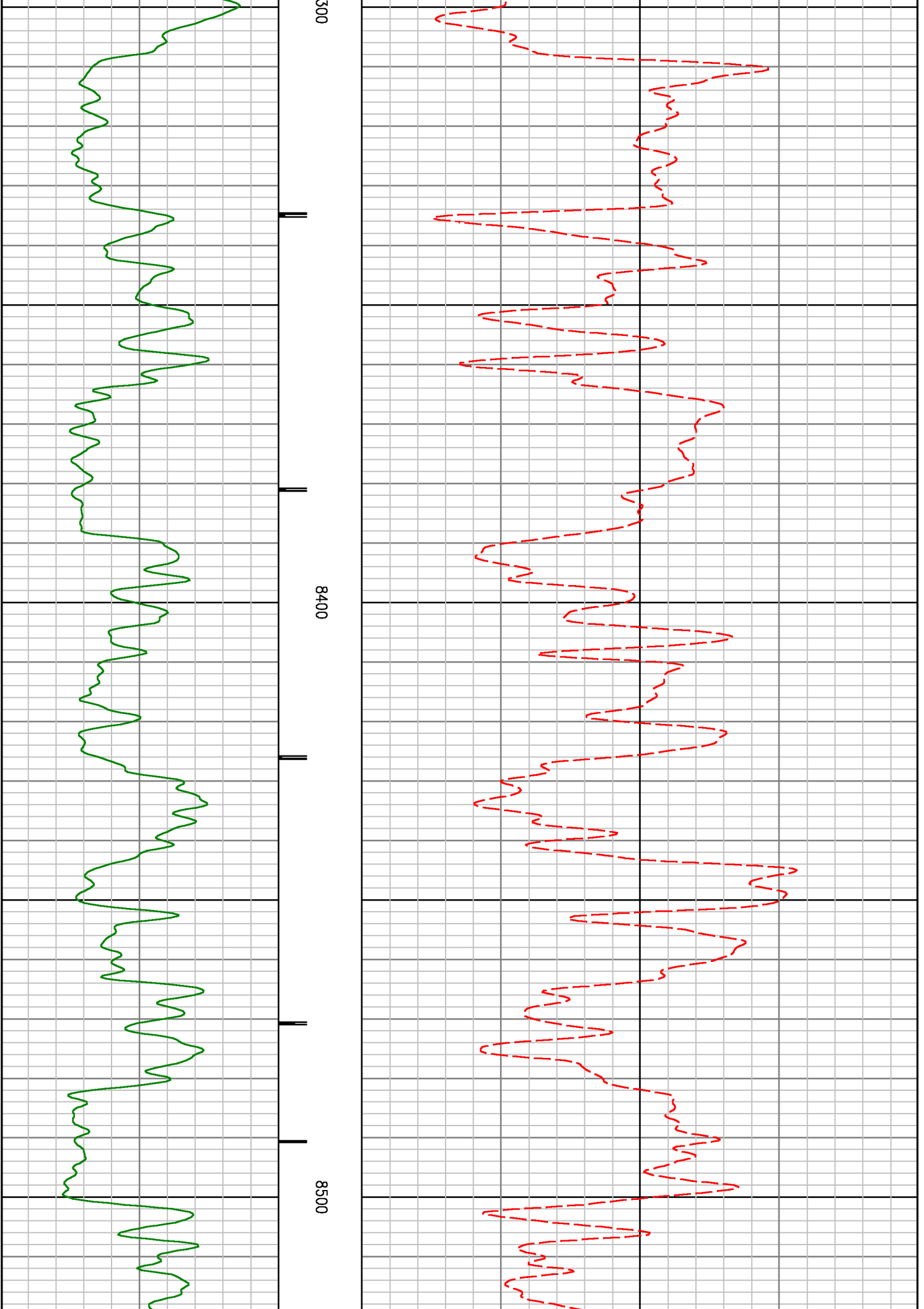
7700

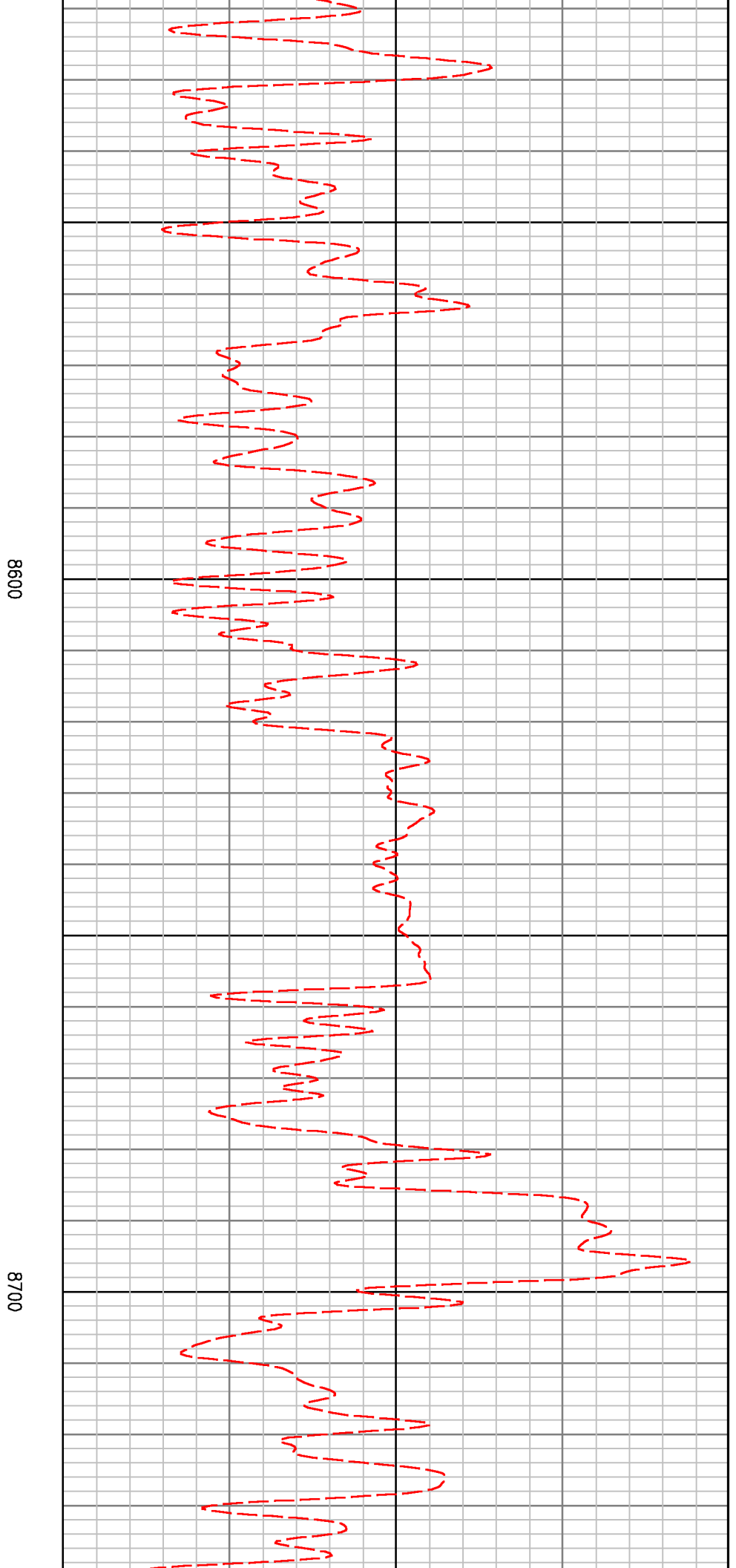
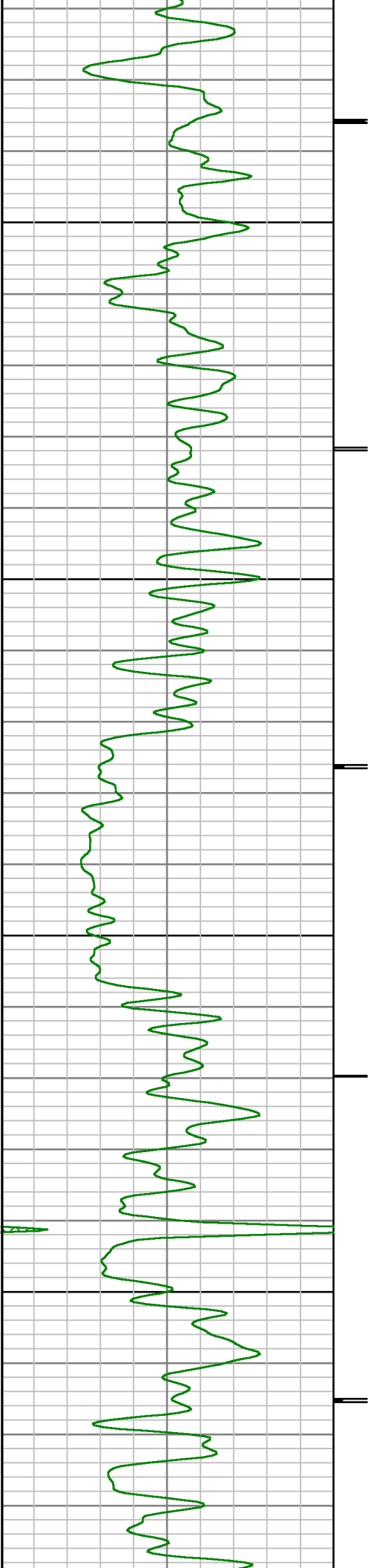
7800

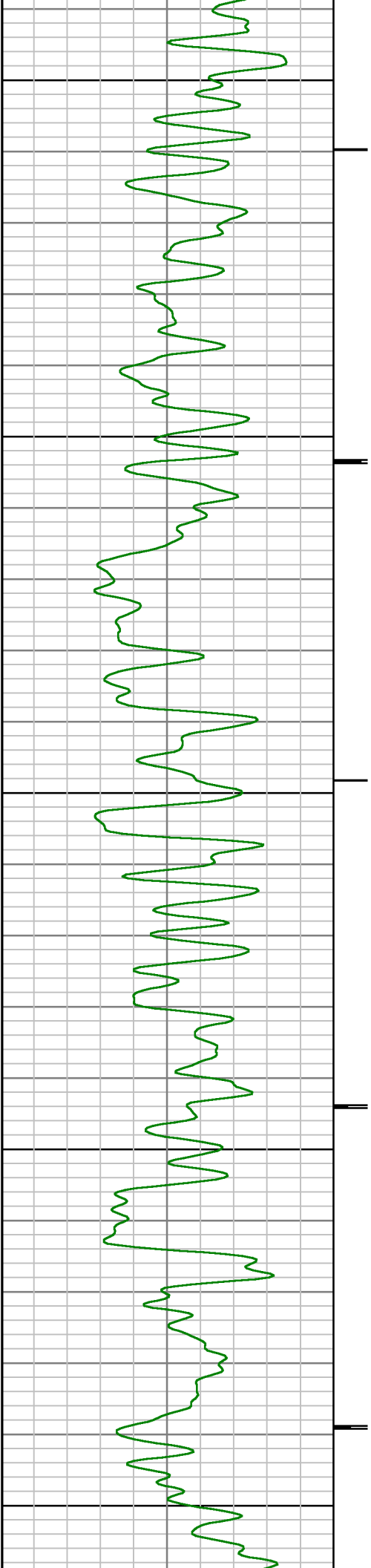






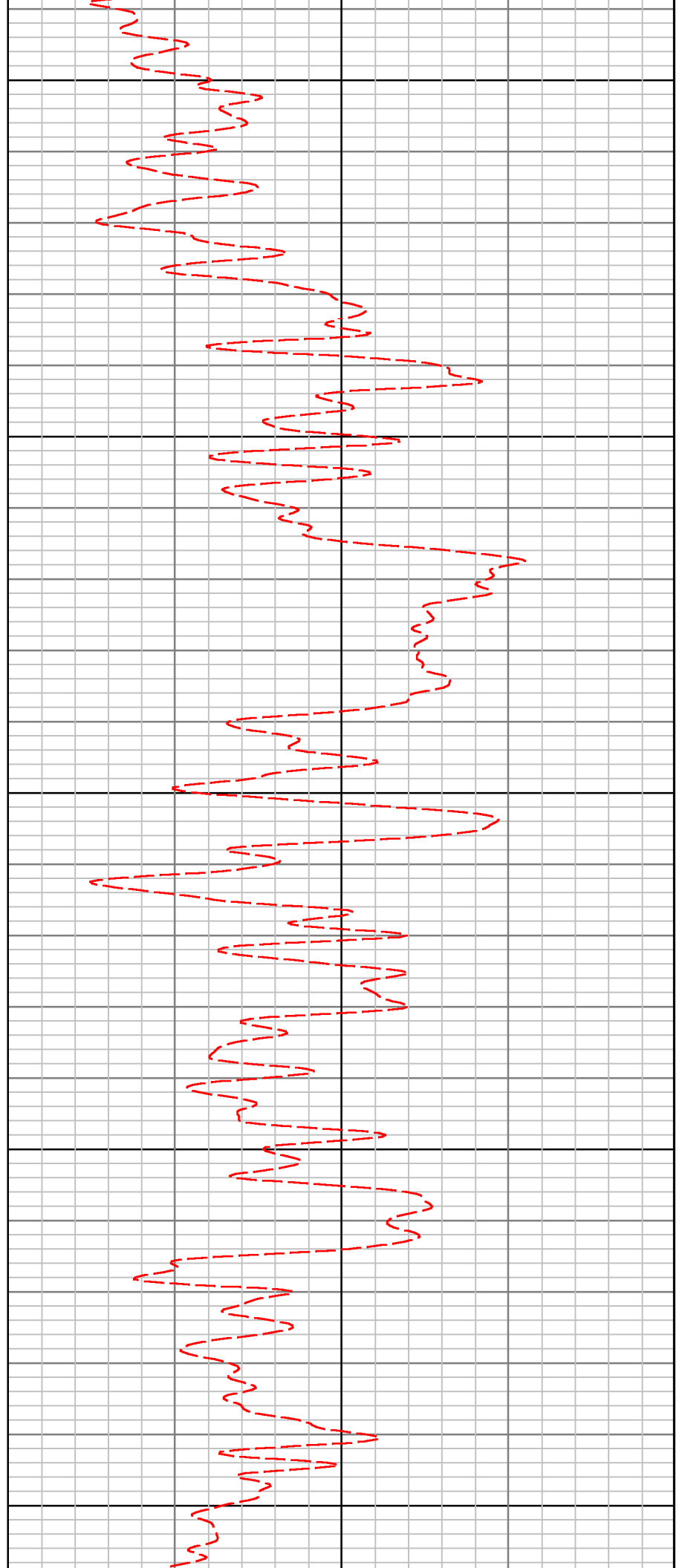


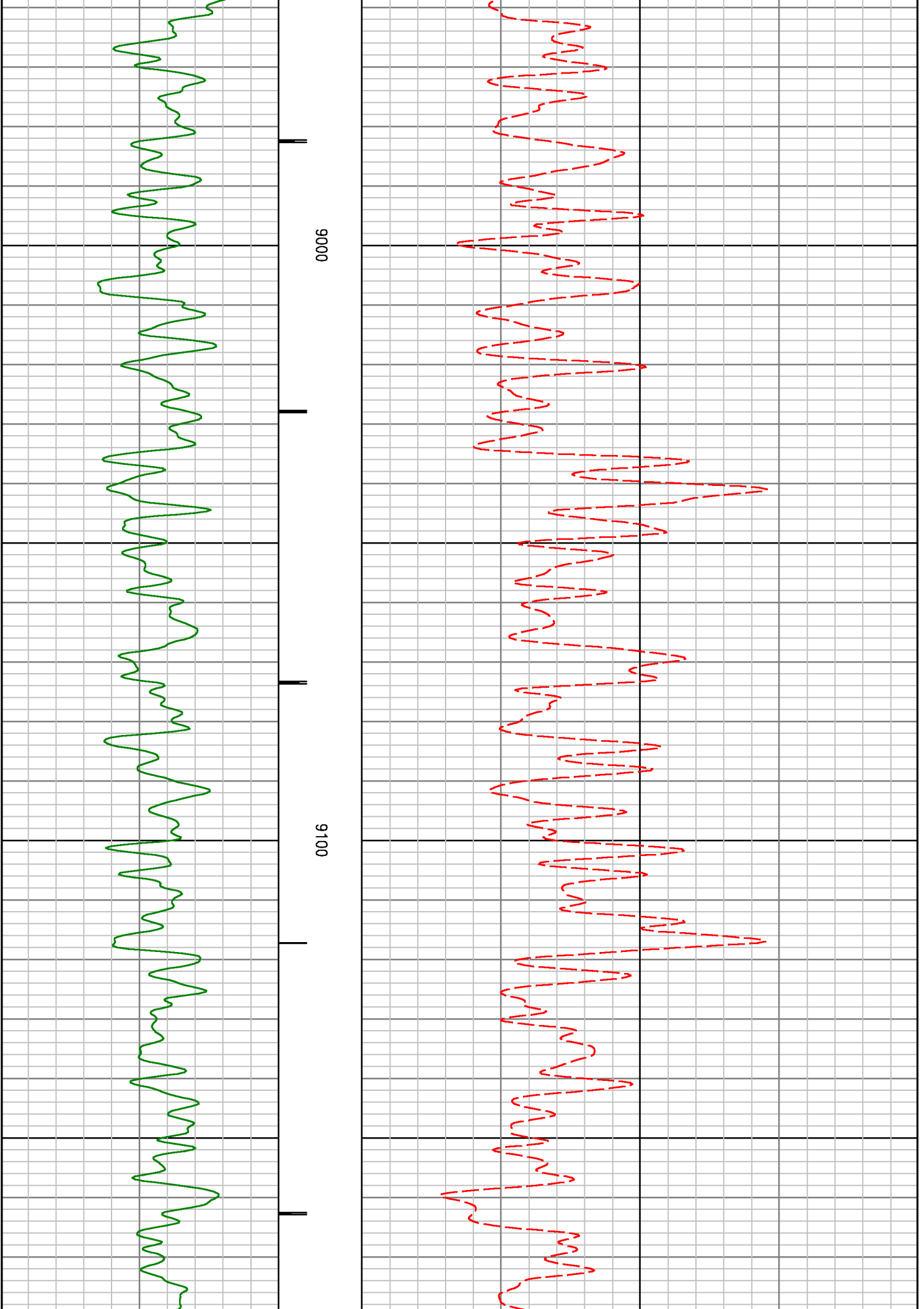


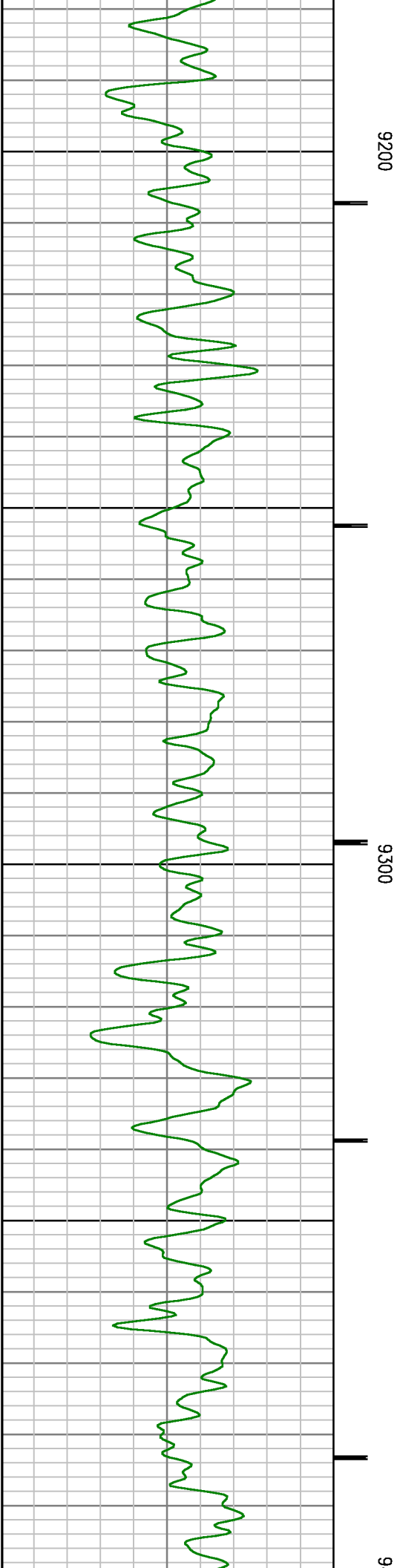
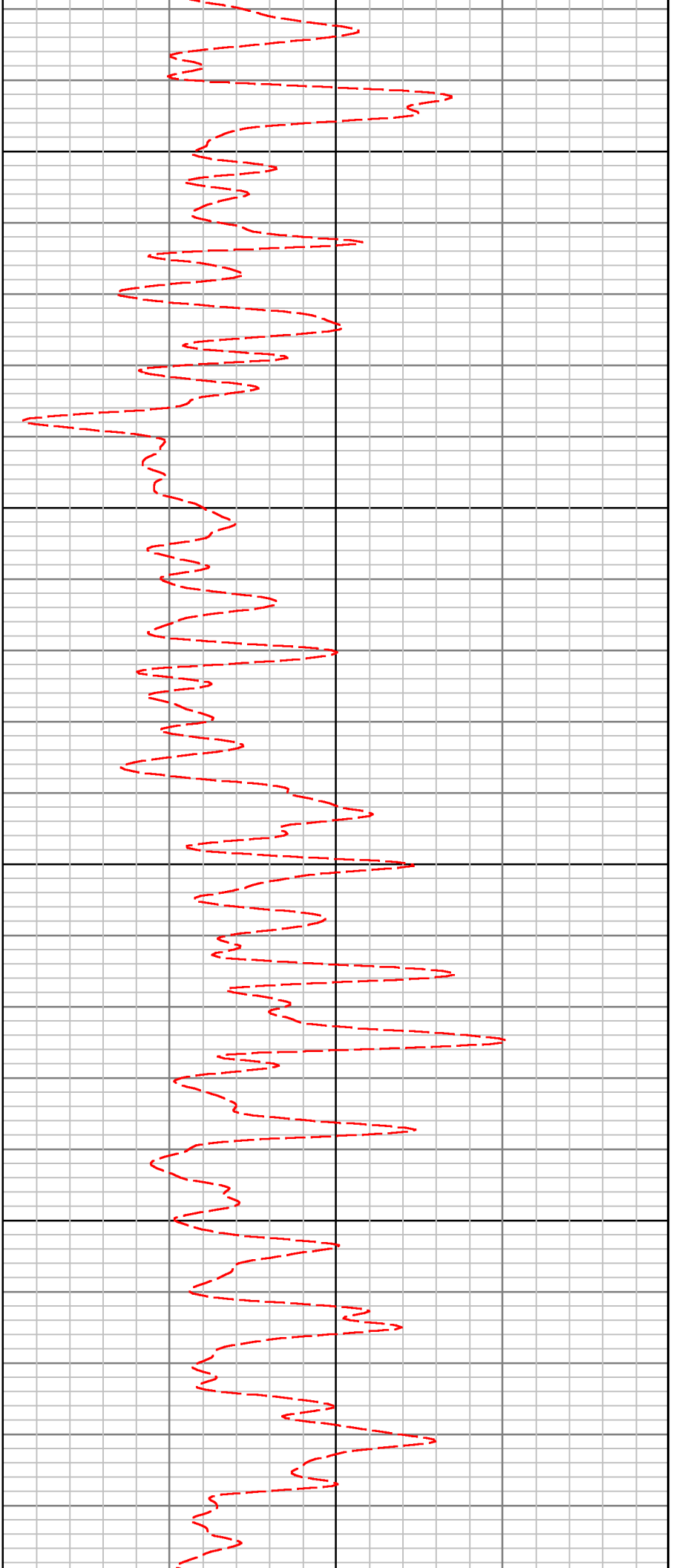


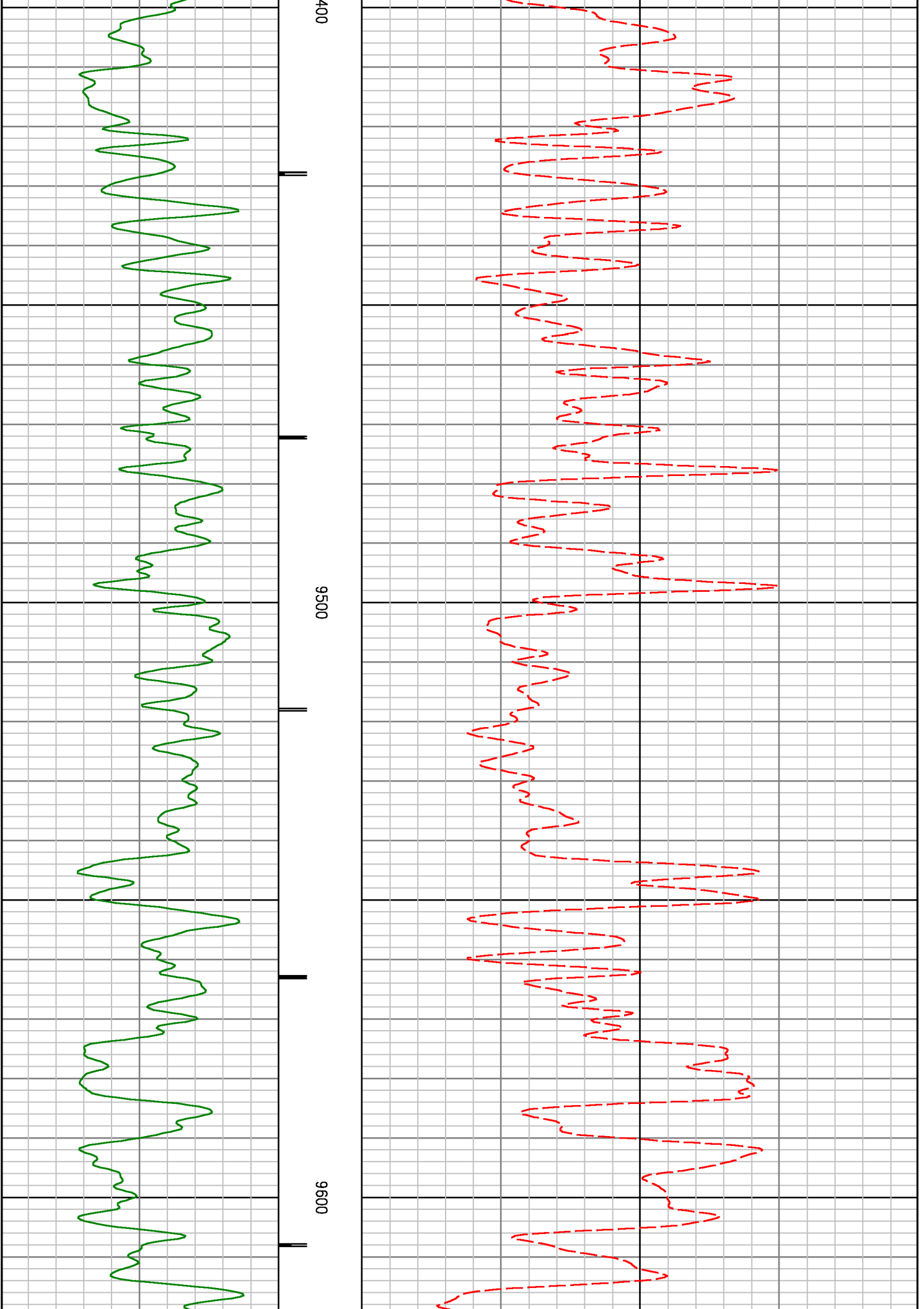
8800

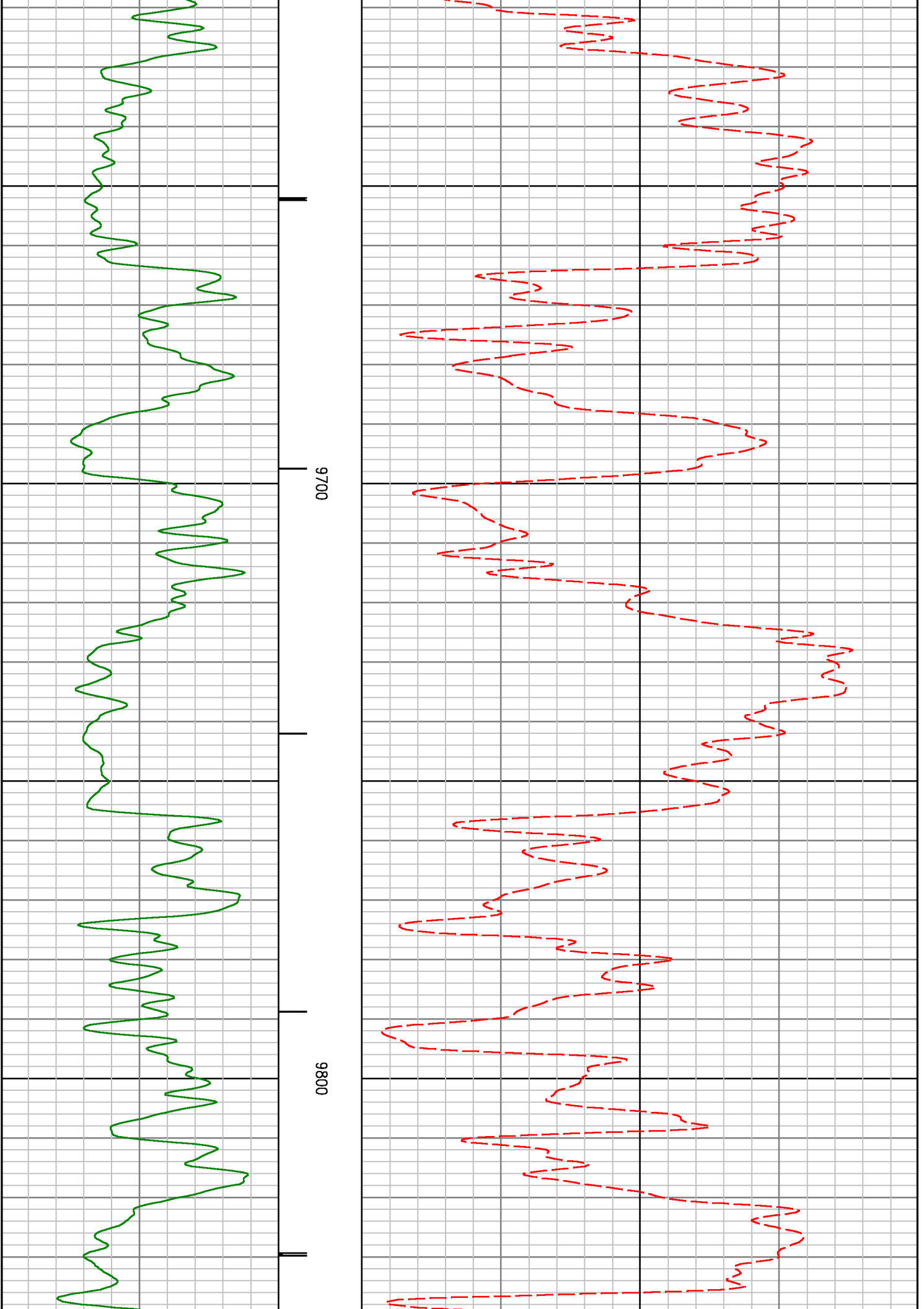
8900

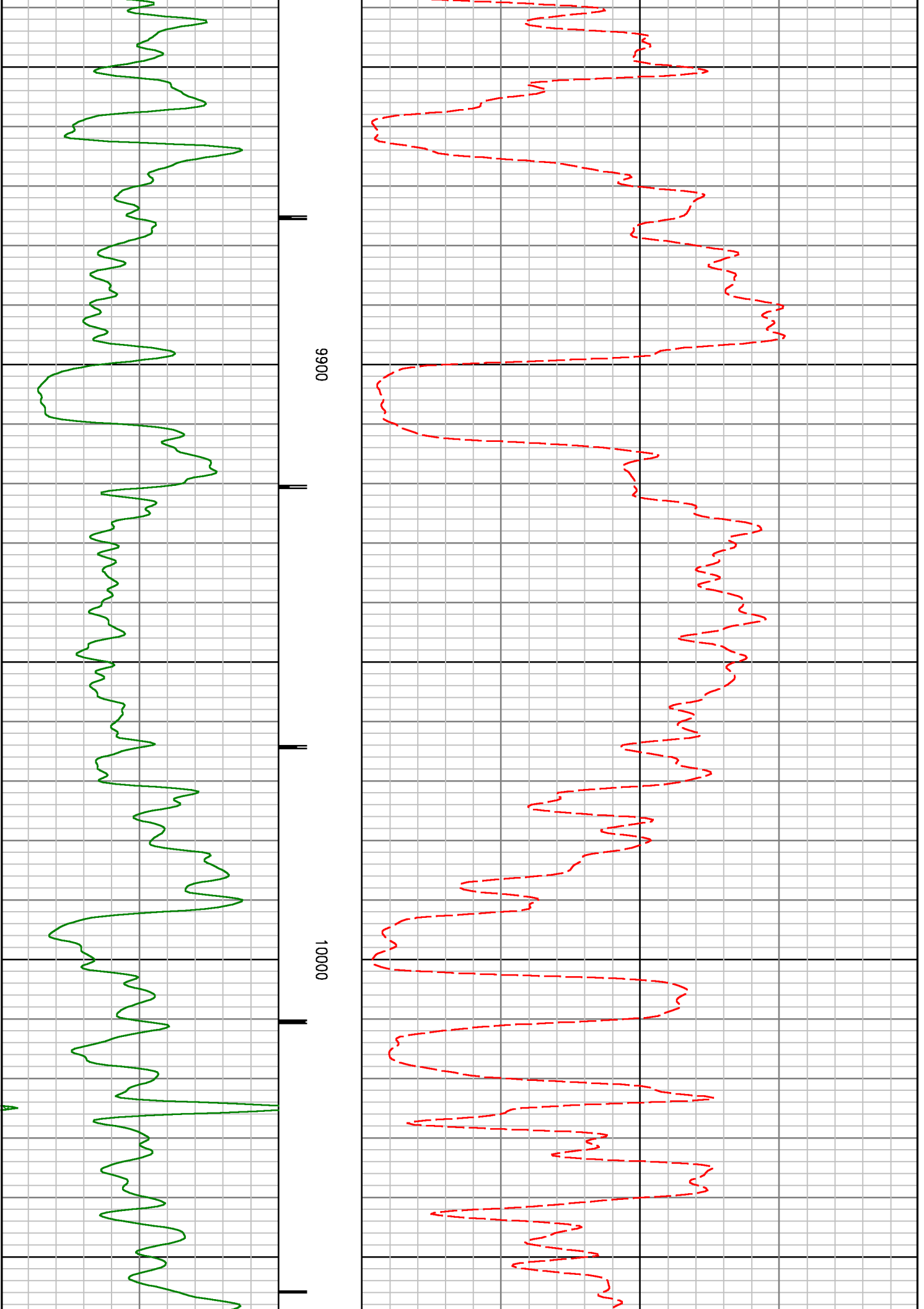


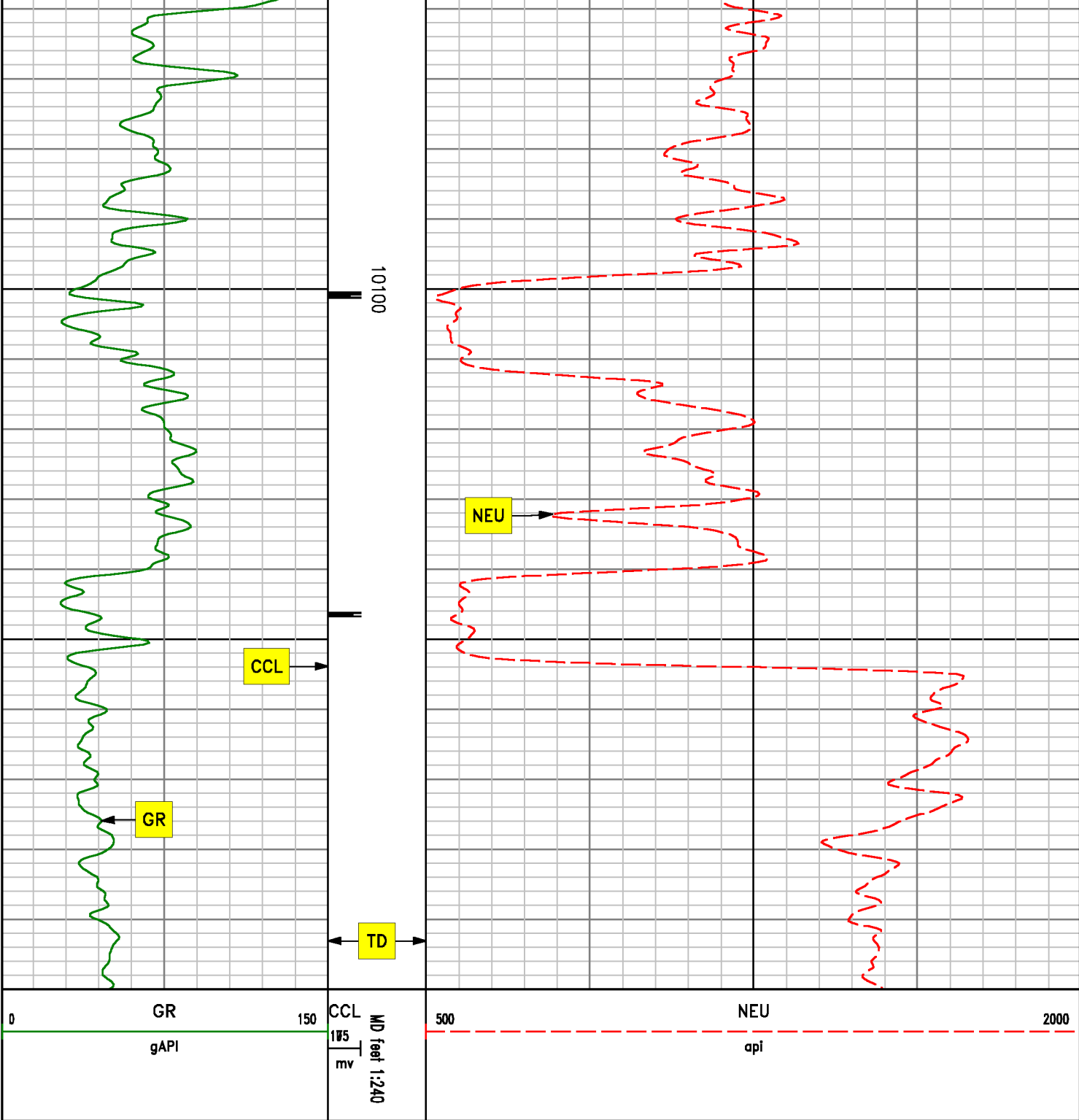




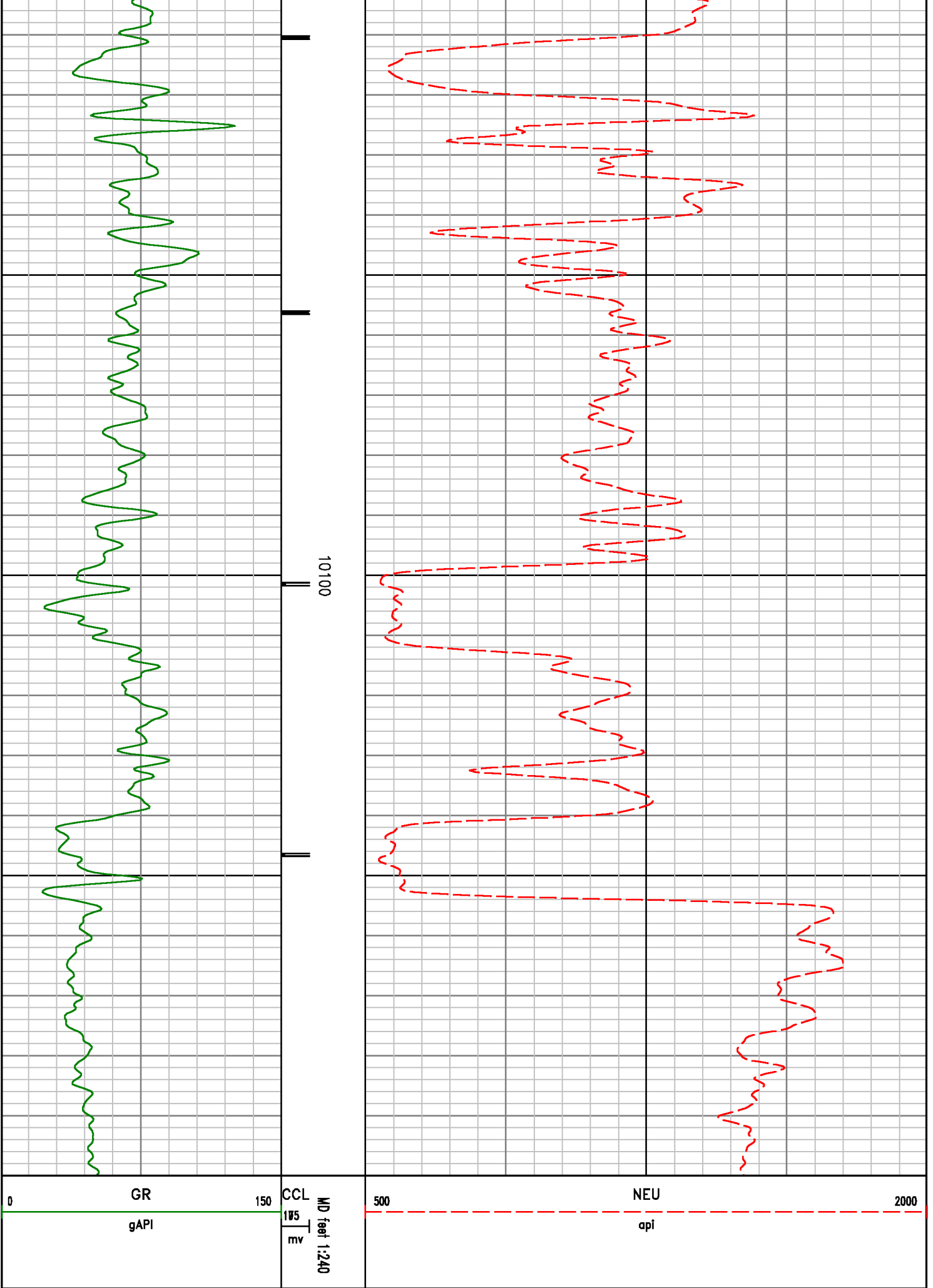








REPEAT SECTION



10100

GR

gAPI

150

CCL

105

mv

MD feet 1:240

NEU

api

500

2000

CALIBRATION SUMMARY

GAMMA RAY

Calibration File: C:\case\calver\GR\457A1.cal

CALIBRATION SUMMARY

DATE/TIME PERFORMED: Thu Apr 08 03:25:20 2010 TOOL SERIES: 2459XA ASSET: 457 SEQ: A1

Calibrator #	Background [cps]	Calibrator On [cps]	Multiplicative	Background [api]	Calibrator On [api]	Differential [api]
S2K DA905	66.67	340.53	0.676	45.03	230.03	185.00

Verification File: C:\case\calver\GR\457A1.VP

PRIMARY LOG VERIFICATION

DATE/TIME PERFORMED: Thu Apr 08 03:27:39 2010 TOOL SERIES: 2459XA ASSET: 457 SEQ: A1

Calibrator #	Background [cps]	Calibrator On [cps]	Multiplicative	Background [api]	Calibrator On [api]	Differential [api]
S2K DA905	58.98	332.71	0.676	39.84	224.75	184.91

NEUTRON

Calibration File: C:\CASE\CALVER\NEU\457A4.cal

CALIBRATION SUMMARY

DATE/TIME PERFORMED: Thu Apr 08 09:48:36 2010 TOOL SERIES: 2459XA ASSET: 457 SEQ: A4

Calibrator #	Source #	Bushing Down [cps]	Bushing Up [cps]	Multiplicative	Bushing Down [api]	Bushing Up [api]	Differential [api]
SHOP SHOP	S17R5 S35012	1549.41	586.72	0.904	1400.23	530.23	870.00

RALSHP

Shop Calibration: C:\case\calver\RALSHP\947A2_shp.cal

SHOP CALIBRATION SUMMARY

DATE/TIME PERFORMED: Sun Apr 18 08:25:07 2010 TOOL SERIES: 1426XA ASSET: 947 SEQ: A2

Tool Delay	-50.00	Tank OD	5.50	Tank Wt	15.50	Tank ID	4.95
------------	--------	---------	------	---------	-------	---------	------

RECEIVER	Travel Time [usec]	Amp. Gate Start [usec]	Amp. Gate Width [usec]	Zero Gate Start [usec]	Zero Gate Width [usec]	Zero Amp. [mV]	Amp Ref. [mV]	Shop Factor
CAL Pulse	222	216	30	166	25	0.223	100.00	0.23
3 Ft. Receiver	222	216	33	166	25	0.553	100.00	0.23
5 Ft. Receiver	330	332	23	239	25	-0.115	150.00	0.25
Radial #1	223	216	27	131	34	-0.354	100.00	0.23
Radial #2	223	216	27	131	34	-0.110	100.00	0.23
Radial #3	222	216	27	131	34	-0.257	100.00	0.23
Radial #4	222	216	27	131	34	0.038	100.00	0.23
Radial #5	220	216	27	131	34	-0.013	100.00	0.23
Radial #6	220	216	27	131	34	-0.085	100.00	0.23
Radial #7	220	216	27	131	34	-0.285	100.00	0.23
Radial #8	223	216	27	131	34	-0.357	100.00	0.23

RALFLD

Well site Calibration: C:\case\calver\RALFLD\947A2 fld.cal

WELLSITE CALIBRATION SUMMARY

DATE/TIME PERFORMED: Sun Apr 18 08:27:16 2010 TOOL SERIES: 1426XA ASSET: 947 SEQ: A2

Tool Delay [usec] Casing OD Casing Wt Casing ID

RECEIVER	Zero Gate Start [usec]	Zero Gate Width [usec]	Zero Amp. [mV]	Full Amp. [mV]	Wellsite Factor	Amp. Ref [mV]
CAL Pulse	166	25	0.088	0.000	1.00	100.000
3 Ft. Receiver	164	25	0.048			
5 Ft. Receiver	270	25	0.172			
Radial #1	173	25	0.240			
Radial #2	173	25	0.281			
Radial #3	173	25	0.367			
Radial #4	173	25	0.342			
Radial #5	173	25	0.157			
Radial #6	173	25	0.168			
Radial #7	173	25	0.178			
Radial #8	173	25	0.059			

TOOL DIAGRAM

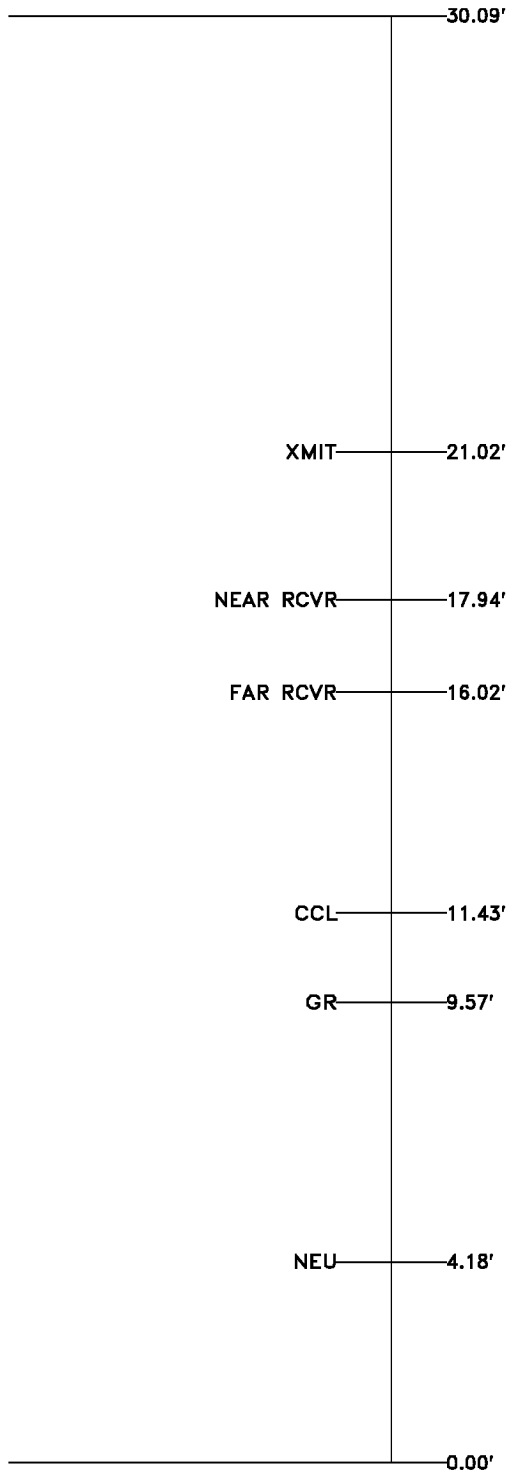
OTA SHORT CABLE HEAD	
CENTRALIZER	
Series	RALCENT
Mnemonic	CENT
Diameter	3.12"
Weight	20.00 lb

PROBE 2 3/4 DUAL RECEIVER RADII	
Series	1426XA
Mnemonic	PROB
Diameter	2.75"
Length	11.17'
Measure Point	0.75' FAR RCVR
Measure Point	2.67' NEAR RCVR
Measure Point	5.75' XMIT
Temp Rating	350.00 °F
Press Rating	18000.00 PSI


CENTRALIZER	
Series	RALCENT
Mnemonic	CENT
Diameter	3.12"
Weight	20.00 lb

Probe GR/CCL/NEU	
Series	2459XA
Mnemonic	PROB
Diameter	2.75"
Length	9.42'
Measure Point	1.21' NEU
Measure Point	6.60' GR
Measure Point	8.46' CCL

CENTRALIZER	
Series	RALCENT
Mnemonic	CENT
Diameter	3.12"
Weight	20.00 lb



Total Length: 30.09'
 Total Weight: Not Available
 Max Diameter: 0' 3.12"

 Baker Atlas	Company MARATHON OIL COMPANY Well 696-5C-15 Field GRAND VALLEY County GARFIELD State COLORADO	File No: 1750 API No: 05045183920000
	Location SHL: 3483' FNL & 1319' FWL	Elevations KB 8153 ft DF 8152 ft



0755

SEC 5

TWP 6S

RGE 96W

GL 8129 ft