

Schlumberger

PERFORM - Drilling Mechanics Time Log

2 in / hr Time Based

Real Time Log

Company: ExxonMobil Oil Corporation

Well: Piceance Creek Unit 197 34B10

Field: Piceance Creek

County: Rio Blanco

State: Colorado

Country: United States

APIN: 051031114600

Rig Name: H&P 320

Rig Type: Flex 4 Land Rig

Section: 34

Township: 1S

Range: 97W

FL: NAD 27 Colorado State Planes, Northern Zone, US Feet

FL1: Y = N 224154.00 ft Latitude: 39° 54' 56.191" N

FL2: X = E 1225761.00 ft Longitude: 108° 15' 38.092" W

Log Measured From - Drill Floor: 6668.0 ft

Ground Level: 6638.0 ft

Permanent Datum - Mean Sea Level

Other Services:

Directional Drilling

Acquisition Dates: 26 Oct 09 to 28 Oct 09

Print Interval: 10/26/2009 10:31:39 AM to 10/28/2009 6:48:05 AM

Index Types: Time

Index Scales: 2" / 3600 secs

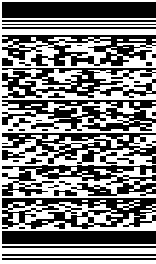
Depth Source: Driller's Depth

Depth Sensor: 3rd Party Depth

Conveyance: Drill Pipe

Print Type: Final

Spud Date: 23 Dec 2008



Disclaimer

THE USE OF AND RELIANCE UPON THIS RECORDED-DATA BY THE HEREIN NAMED COMPANY (AND ANY OF ITS AFFILIATES, PARTNERS, REPRESENTATIVES, AGENTS, CONSULTANTS AND EMPLOYEES) IS SUBJECT TO THE TERMS AND CONDITIONS AGREED UPON BETWEEN SCHLUMBERGER AND THE COMPANY, INCLUDING: (a) RESTRICTIONS ON USE OF THE RECORDED-DATA; (b) DISCLAIMERS AND WAIVERS OF WARRANTIES AND REPRESENTATIONS REGARDING COMPANY'S USE AND RELIANCE UPON THE RECORDED-DATA; AND (c) CUSTOMER'S FULL AND SOLE RESPONSIBILITY FOR ANY INFERENCE DRAWN OR DECISION MADE IN CONNECTION WITH THE USE OF THIS RECORDED-DATA.

Contents

- 1. Header
- 2. Disclaimer
- 3. Contents
- 4. 1 PERFORM - Drilling Mechanics Time Log
  - 4.1 Software Version
  - 4.2 Pass Summary
  - 4.3 Log ( PERFORM - Drilling Mechanics Time Log 2 )
- 5. Tail

1

PERFORM - Drilling Mechanics Time Log

Software Version

Acquisition System		Version	
MaxWell		1.2.8706.0	
Framework Patch		FWK-BGC-20090709-1.2.8706.1009	
Application Patch		APL-SRPC-20090701-1.2.8706.1008	
Tool Elements	Description	Software Version	Firmware Version
DRILLING_SURFACE	DRILLING_SURFACE	1.2.8706.1030	

Pass Summary

Run Name	Pass Objective	Direction	Start	Stop	Acquisition Start Date	Acquisition Start Time
1	TimeLogicalAcq	Down	26-Oct-2009 10:31:30	28-Oct-2009 06:48:04	26-Oct-2009	10:31:30

Log

1: TimeLogicalAcq 19464457-63DE-4A35-A4D8-56600216458D

Description: PowerPulse Drilling Mechanics Time RT    Format: Log ( PERFORM - Drilling Mechanics Time Log 2 )    Index Scale: 2 in per 3600 s    Index Type: Time  
Creation Date: 10-Nov-2009 04:17:45

AJAM

TELE675:TELE675

ACQ - RT

BLKP

DRILLING\_SURFACE

ACQ - RT

CRPM

TELE675:TELE675

ACQ - RT

DEPTH

DnMWorkflow

ACQ - RT

GENERIC\_01

DRILLING\_SURFACE

ACQ - RT

HKLA

DRILLING\_SURFACE

ACQ - RT

OBTM

DnMWorkflow

ACQ - RT

ROP

DRILLING\_SURFACE

ACQ - RT

RPM

DRILLING\_SURFACE

ACQ - RT

SHKPK

TELE675:TELE675

ACQ - RT

SPPA

DRILLING\_SURFACE

ACQ - RT

STICK

TELE675:TELE675

ACQ - RT

STOR

DRILLING\_SURFACE

ACQ - RT

SWOB

DRILLING\_SURFACE

ACQ - RT

TEMP\_DNI

TELE675:TELE675

ACQ - RT

TFLO

DRILLING\_SURFACE

ACQ - RT

TRPM

TELE675:TELE675

ACQ - RT

VIB\_LAT

TELE675:TELE675

ACQ - RT

VIB\_X

TELE675:TELE675

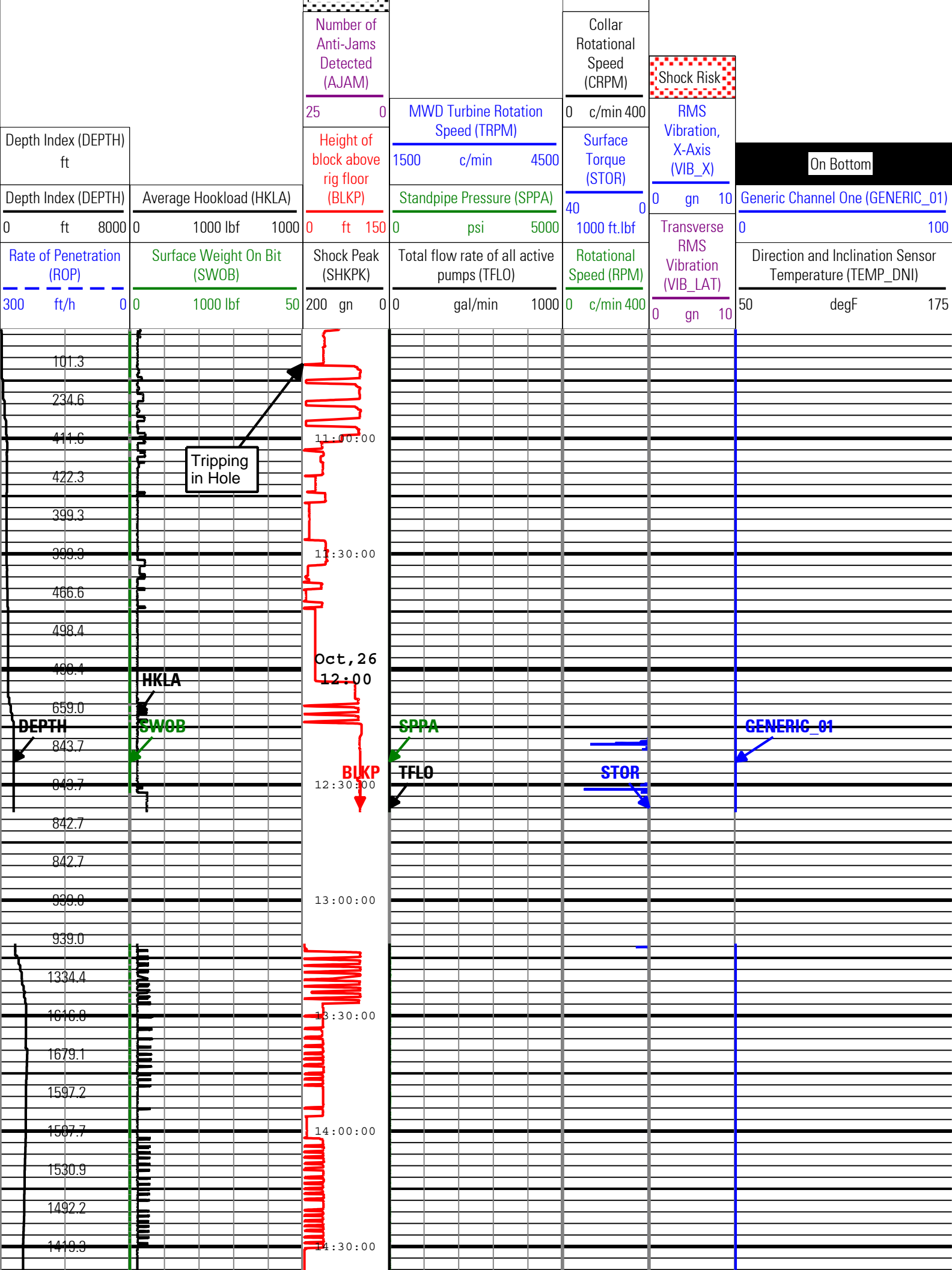
ACQ - RT

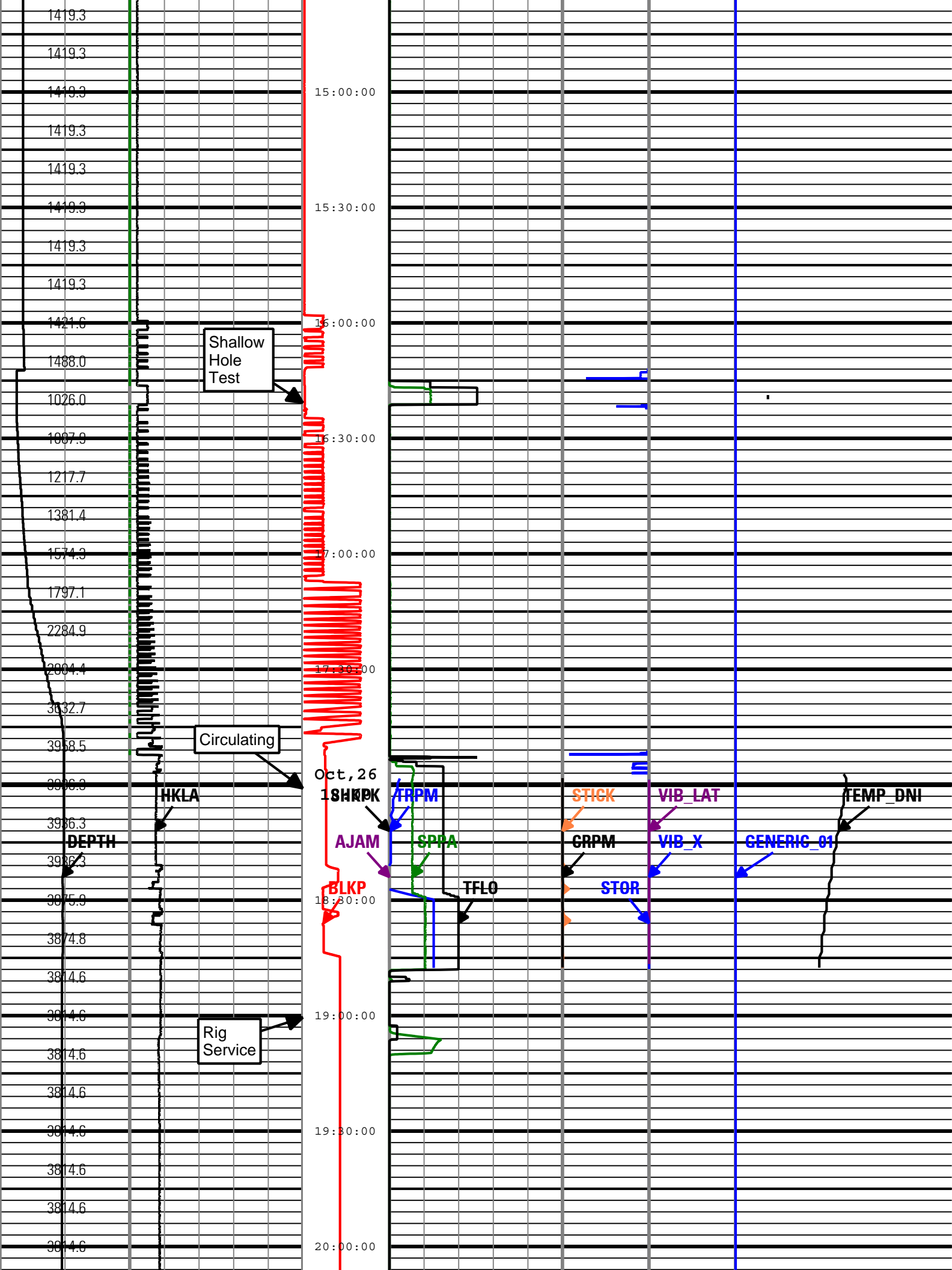
High SticknSlip

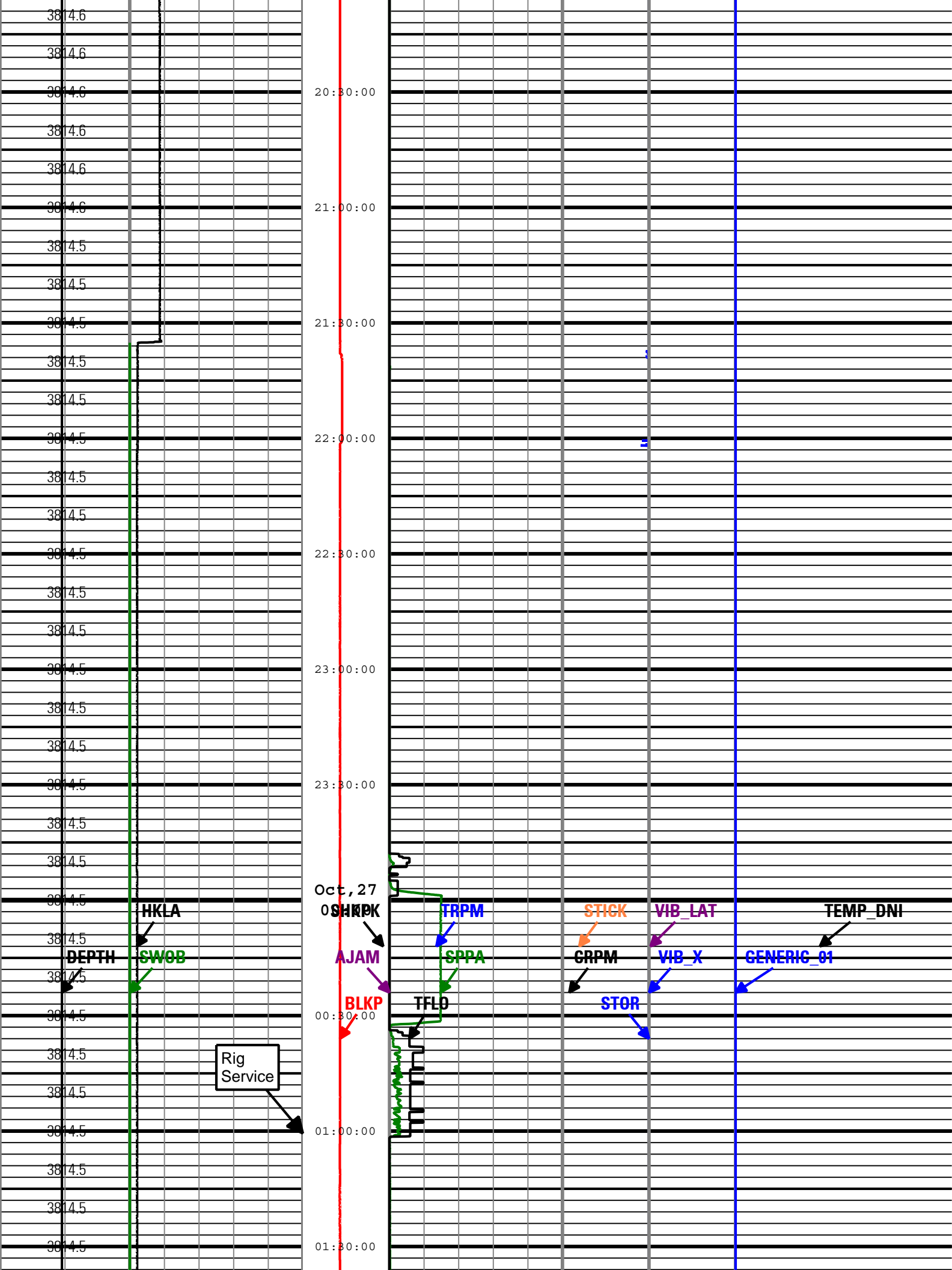
Stick Slip Indicator (STICK)

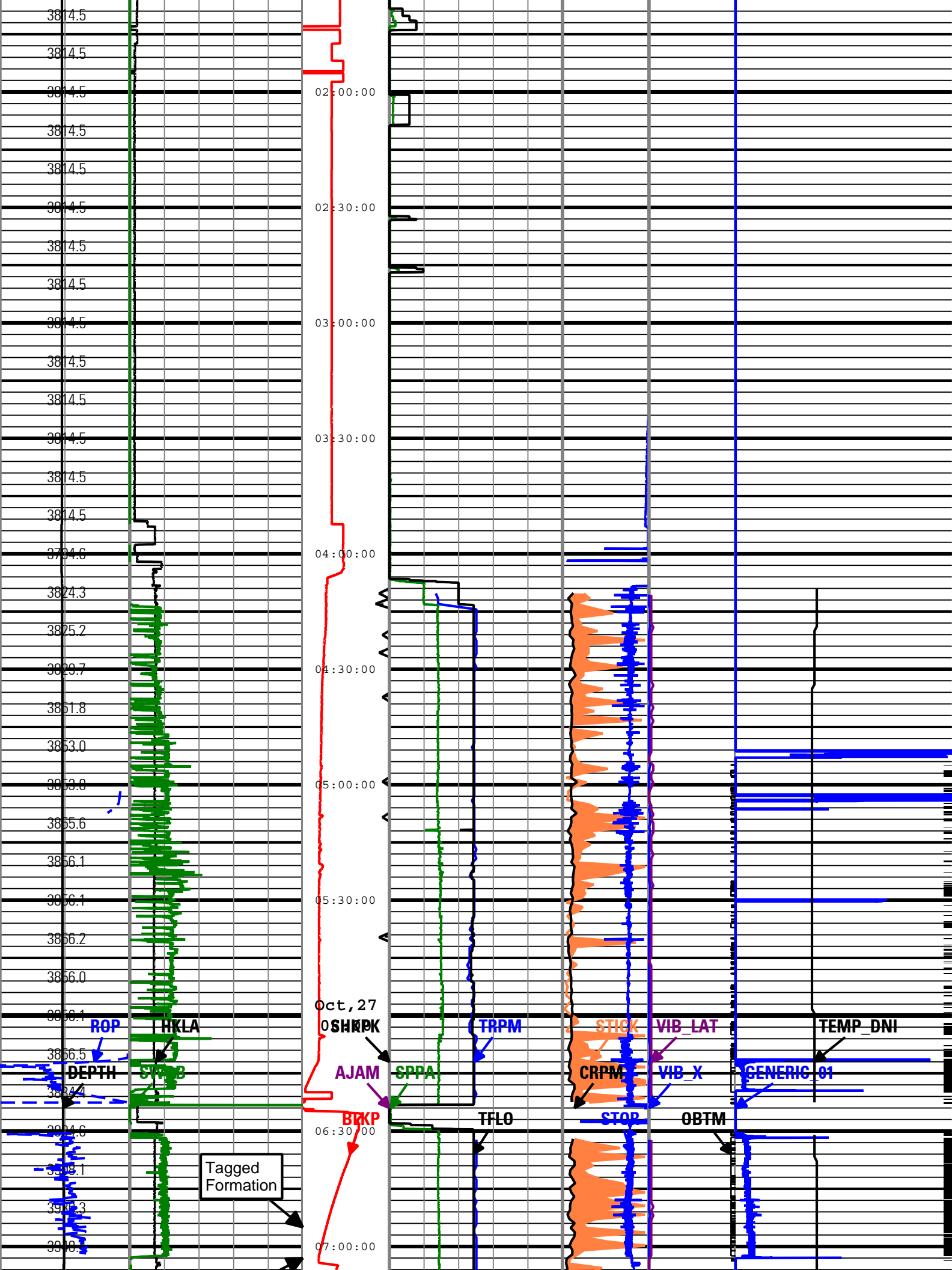
0 c/min 400

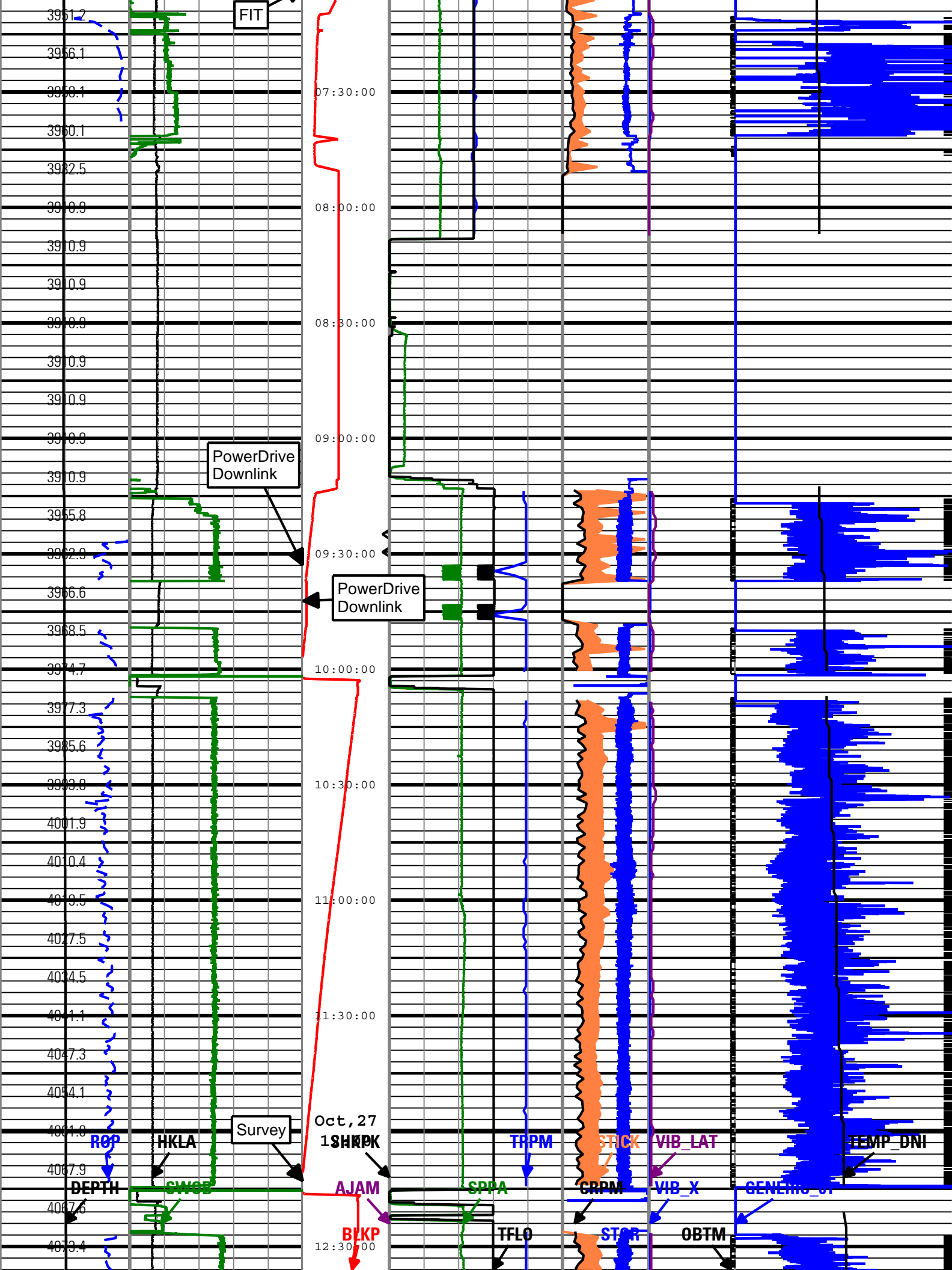
Shock Peak

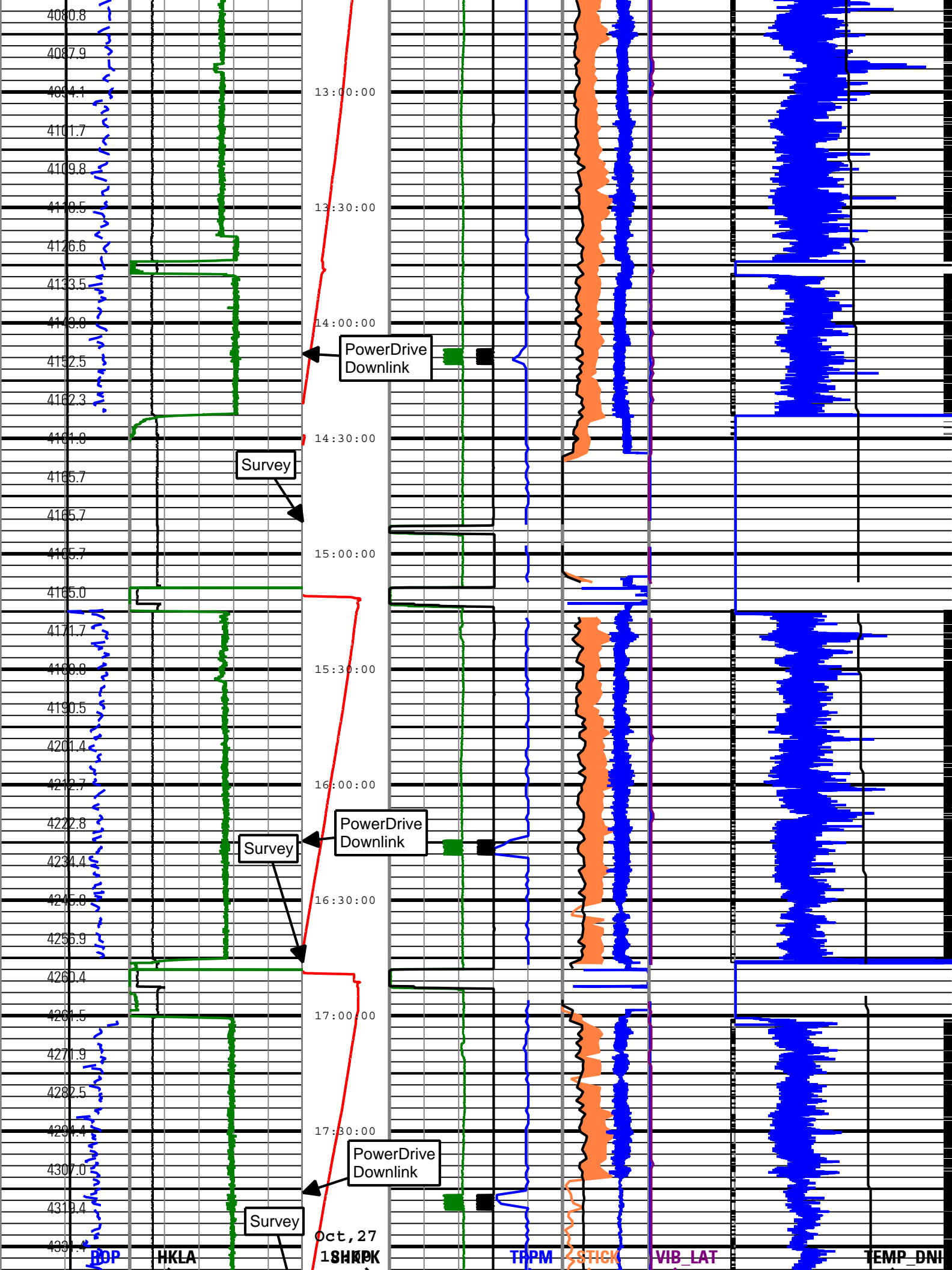




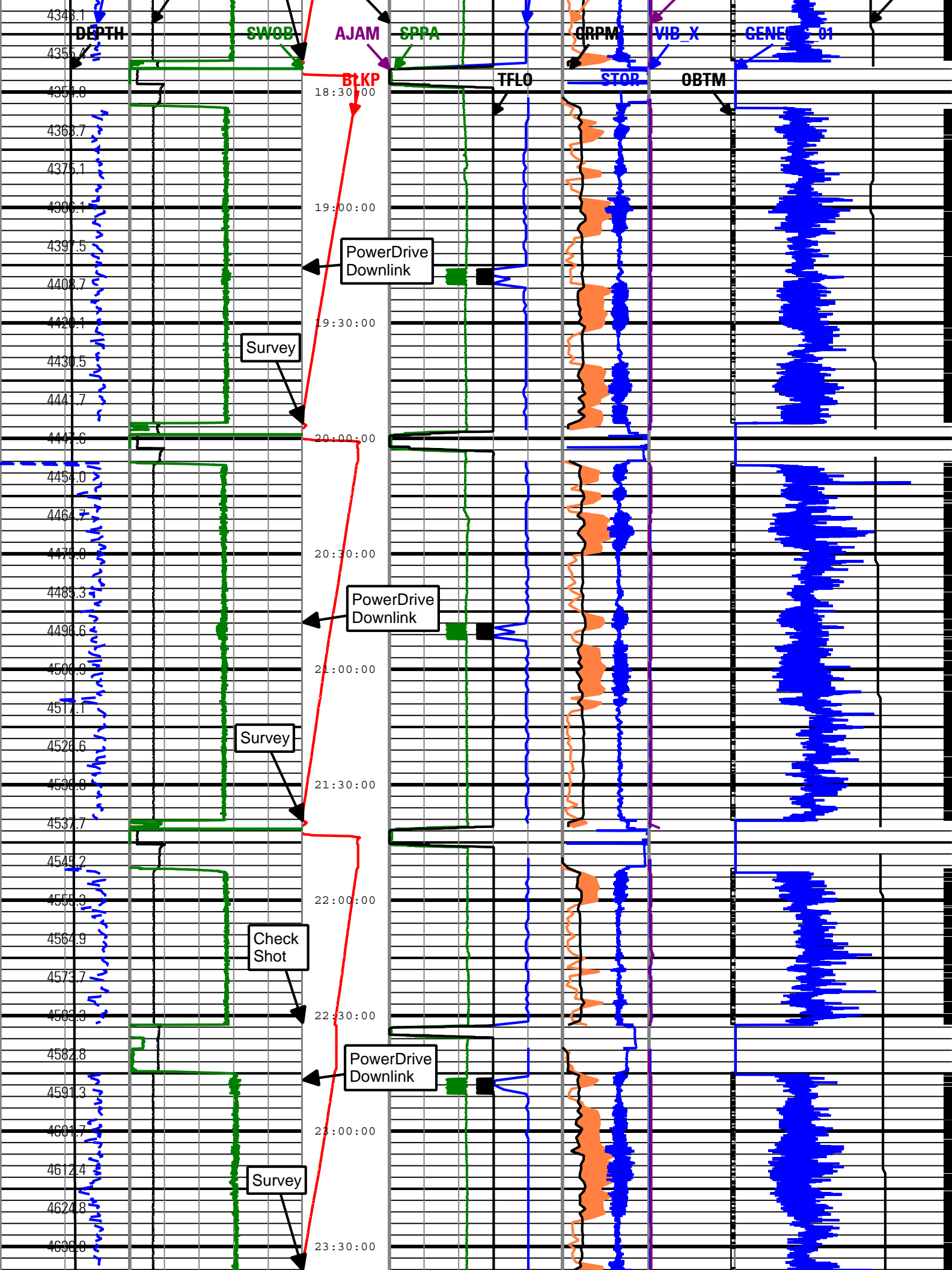


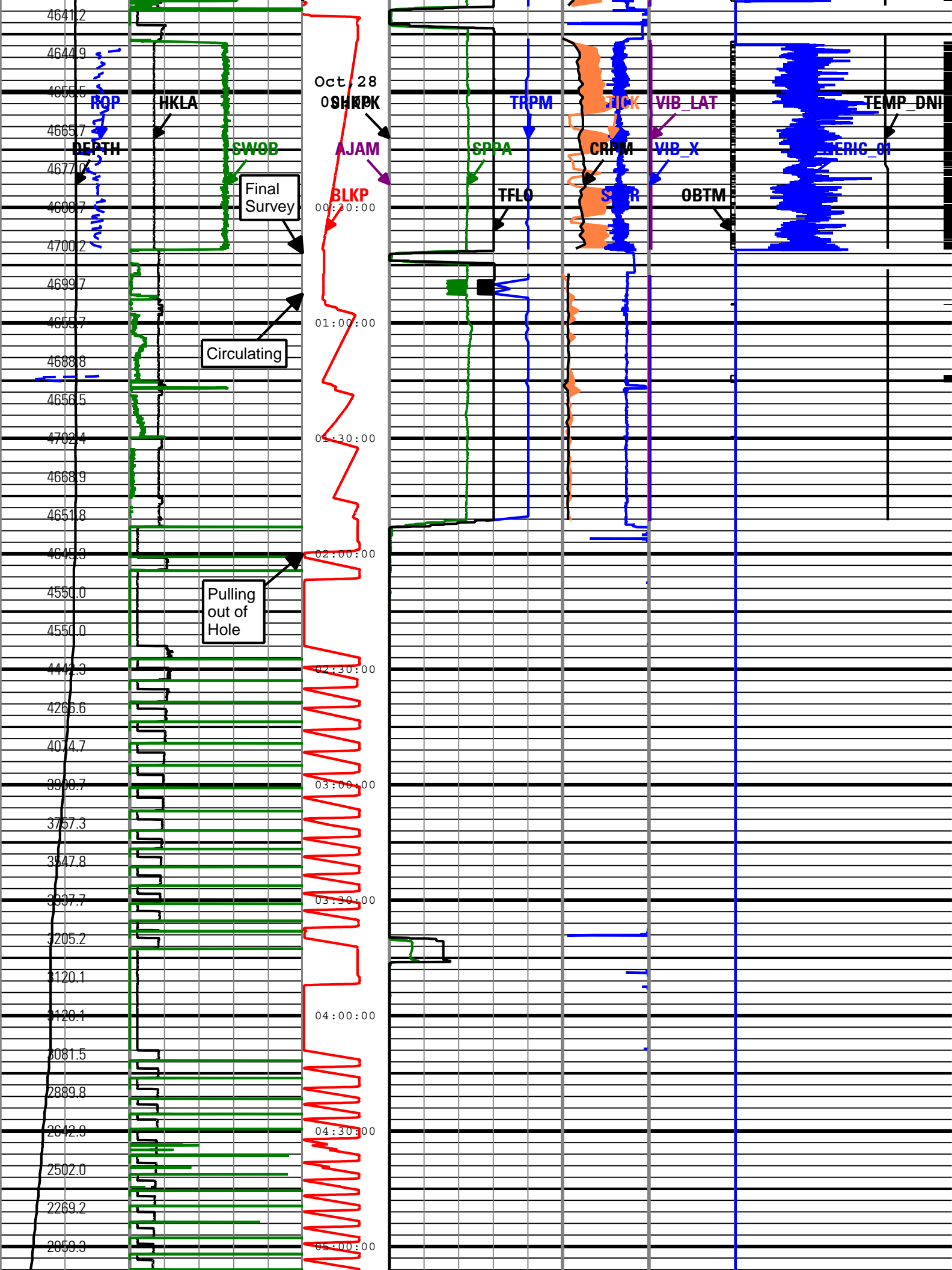


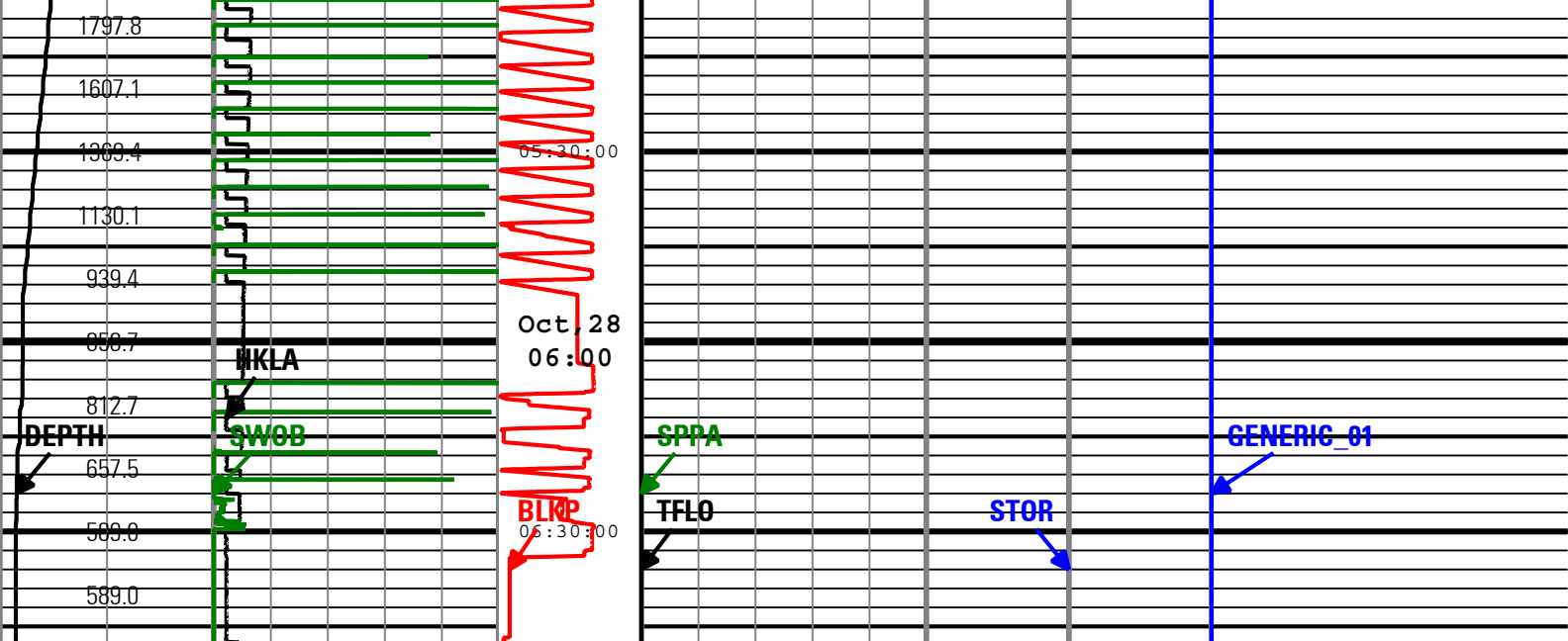












Depth Index (DEPTH) ft	Average Hookload (HKLA) 0 1000 lbf 1000	Shock Peak	MWD Turbine Rotation Speed (TRPM) 1500 c/min 4500	High SticknSlip	Shock Risk	On Bottom
Depth Index (DEPTH) 0 ft 8000	Surface Weight On Bit (SWOB) 0 1000 lbf 50	Number of Anti-Jams Detected (AJAM) 25 0	Standpipe Pressure (SPPA) 0 psi 5000	Stick Slip Indicator (STICK) 0 c/min 400	RMS Vibration, X-Axis (VIB_X) 0 gn 10	Generic Channel One (GENERIC_01) 0 100
Rate of Penetration (ROP) 300 ft/h 0		Height of block above rig floor (BLKP) 0 ft 150	Total flow rate of all active pumps (TFLO) 0 gal/min 1000	Collar Rotational Speed (CRPM) 0 c/min 400	Transverse RMS Vibration (VIB_LAT) 0 gn 10	Direction and Inclination Sensor Temperature (TEMP_DNI) 50 degF 175
		Shock Peak (SHKPK) 200 gn 0		Surface Torque (STOR) 40 0 1000 ft.lbf		
				Rotational Speed (RPM) 0 c/min 400		

Description: PowerPulse Drilling Mechanics Time RT Format: Log ( PERFORM - Drilling Mechanics Time Log 2 ) Index Scale: 2 in per 3600 s Index Type: Time  
Creation Date: 10-Nov-2009 04:17:45

**Company:** ExxonMobil Oil Corporation

**Well:** Piceance Creek Unit 197 34B10

**Field:** Piceance Creek

**County:** Rio Blanco

**State:** Colorado

**Country:** United States



