

Company: ExxonMobil Oil Corporation

Well: Piceance Creek Unit 197 34B8

Field: Piceance Creek

County: Rio Blanco

State: Colorado

Country: U.S.A

Section: 34 APIN: 051031108200

Township: 1S Rig Name: H & P 320

Range: 97W Rig Type: Flex 4

FL: NAD 27 Colorado State Planes, Northern Zone

FL1: X: 1225769.00 ft Latitude: 39° 54' 56.470" N

FL2: Y: 224182.00 ft Longitude: 108° 15' 38.001" W



Permanent Datum - Mean Sea Level

Acquisition Dates: 29 Sep 09 to 01 Oct 09

Print Interval: 9/30/2009 12:10:03 AM to 10/1/2009 8:57:46 AM

Index Types: Time

Index Scales: 2" / 3600 secs

Depth Source: Driller's Depth

Depth Sensor: 3rd Party Depth

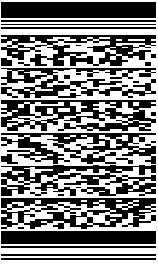
Conveyance: Drill Pipe

Print Type: Final

Spud Date: 12/13/2008

Other Services:

Directional Drilling



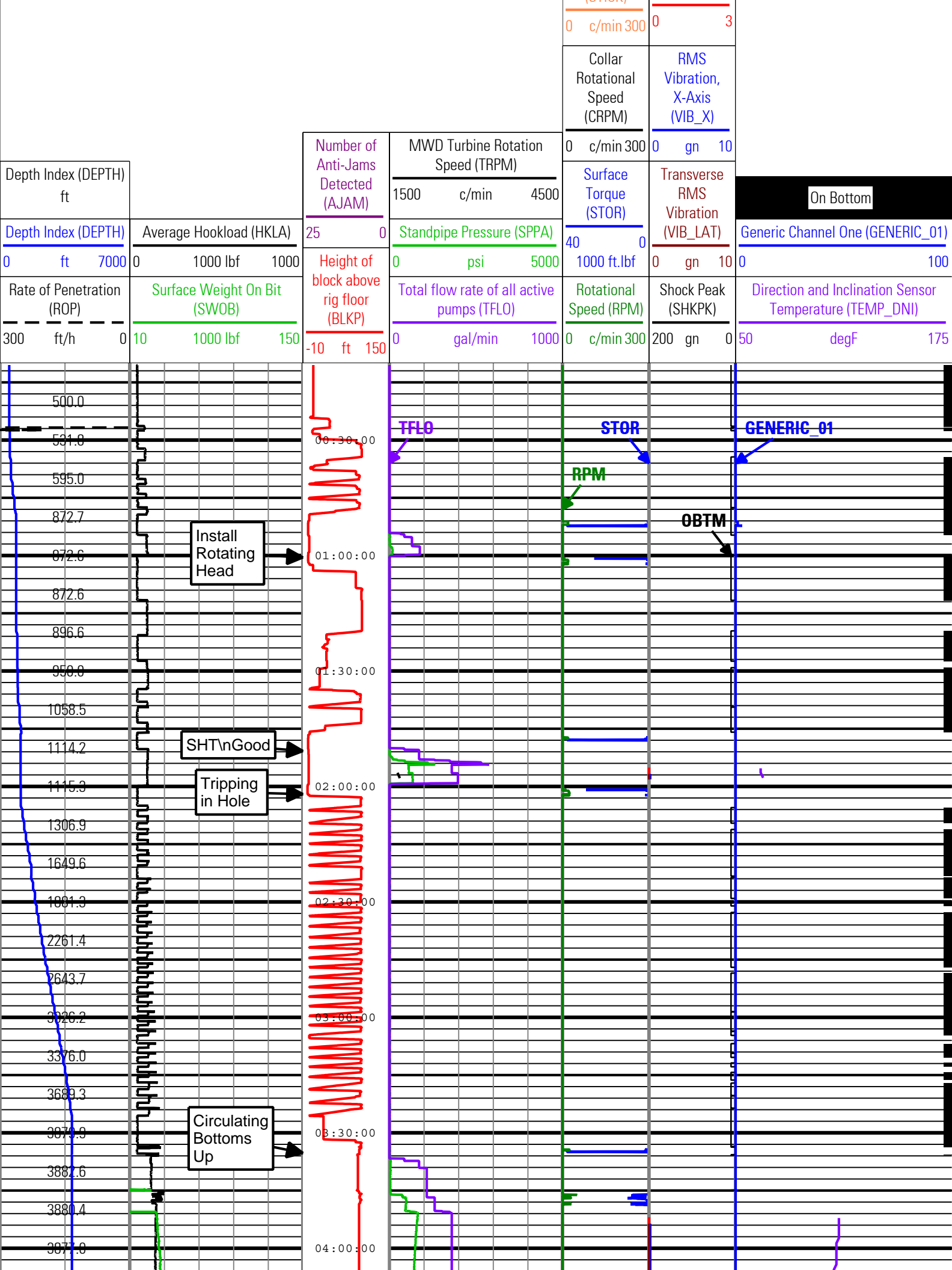
Disclaimer

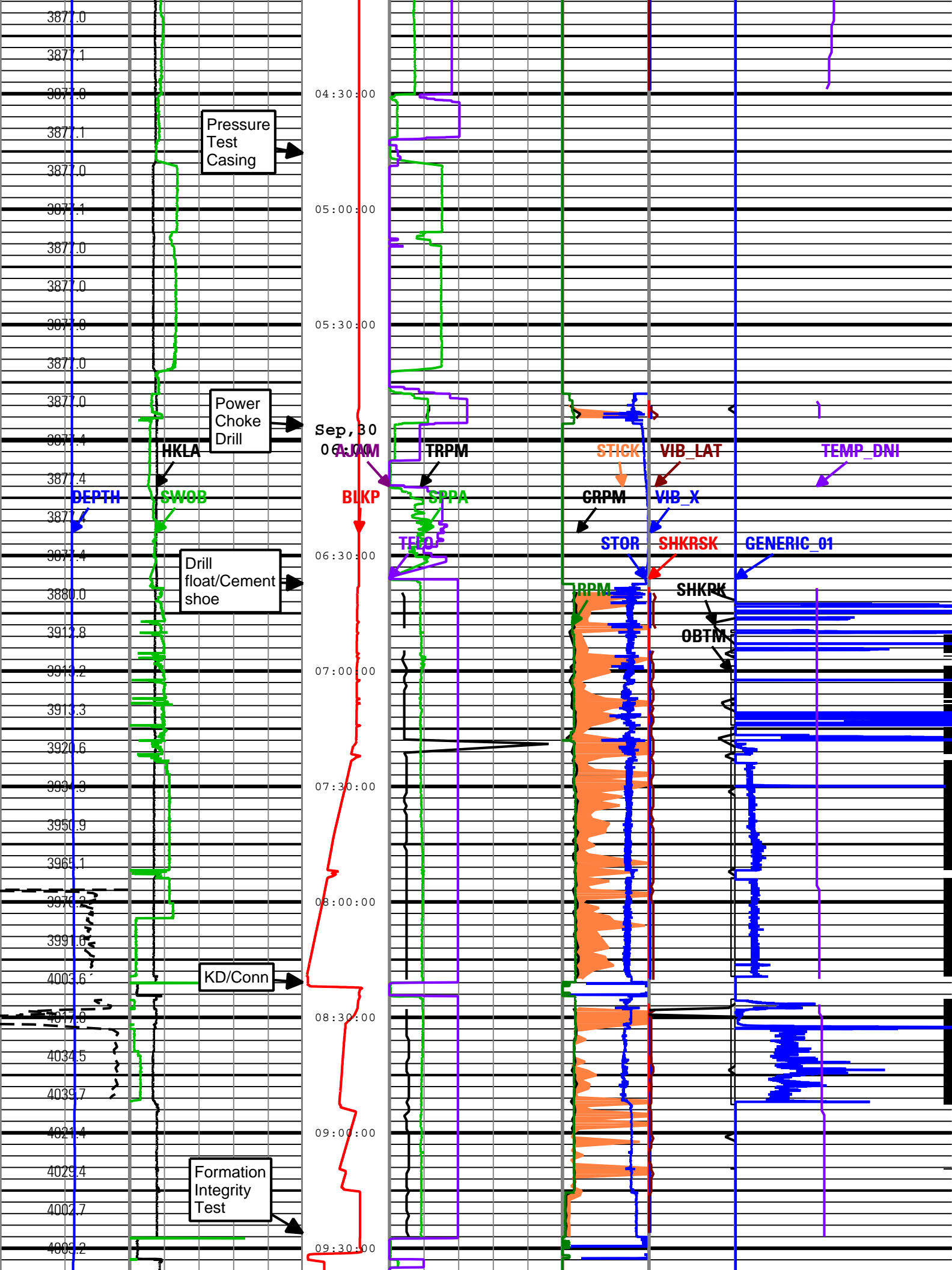
THE USE OF AND RELIANCE UPON THIS RECORDED-DATA BY THE HEREIN NAMED COMPANY (AND ANY OF ITS AFFILIATES, PARTNERS, REPRESENTATIVES, AGENTS, CONSULTANTS AND EMPLOYEES) IS SUBJECT TO THE TERMS AND CONDITIONS AGREED UPON BETWEEN SCHLUMBERGER AND THE COMPANY, INCLUDING: (a) RESTRICTIONS ON USE OF THE RECORDED-DATA; (b) DISCLAIMERS AND WAIVERS OF WARRANTIES AND REPRESENTATIONS REGARDING COMPANY'S USE AND RELIANCE UPON THE RECORDED-DATA; AND (c) CUSTOMER'S FULL AND SOLE RESPONSIBILITY FOR ANY INFERENCE DRAWN OR DECISION MADE IN CONNECTION WITH THE USE OF THIS RECORDED-DATA.

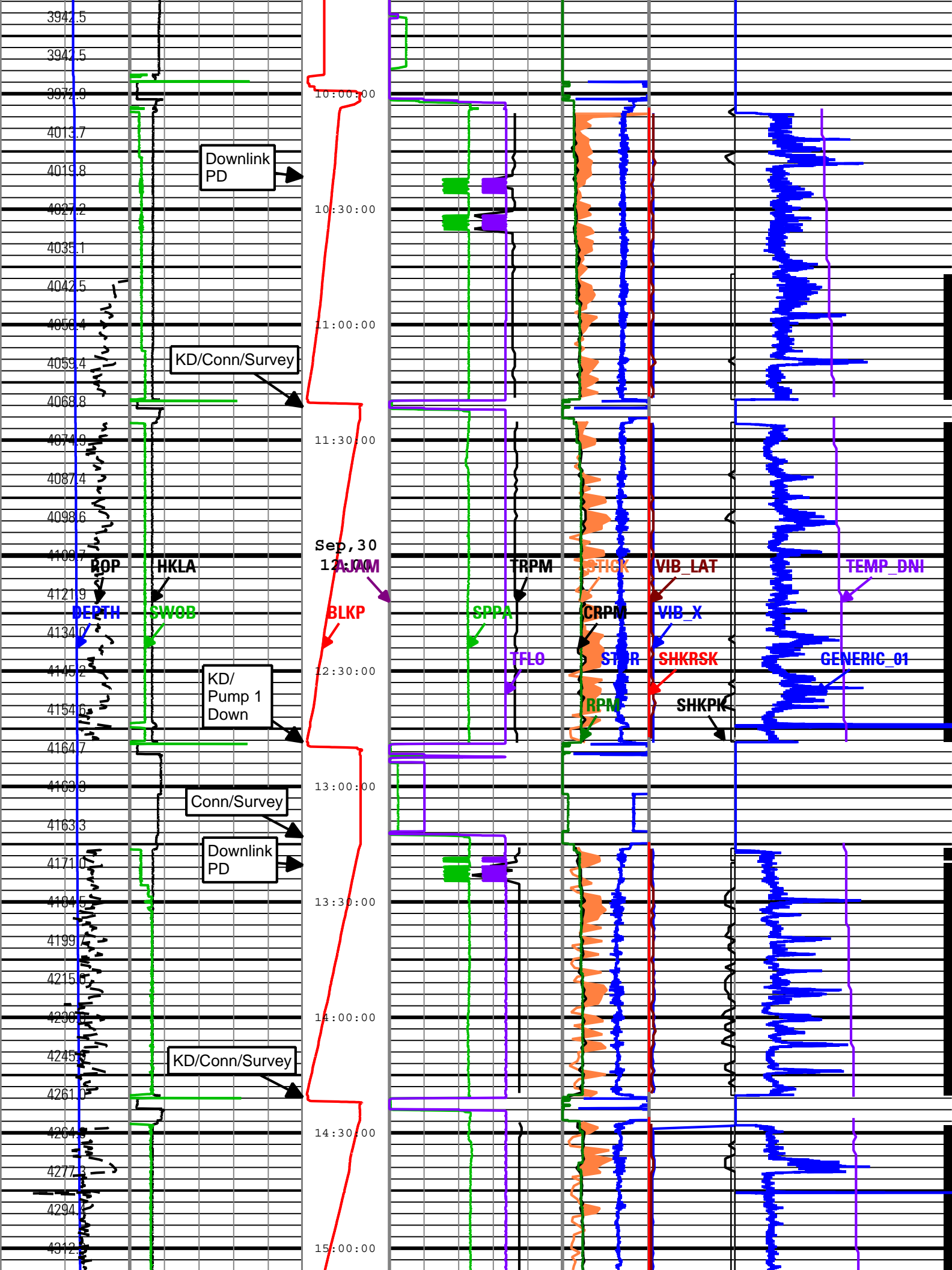
Contents

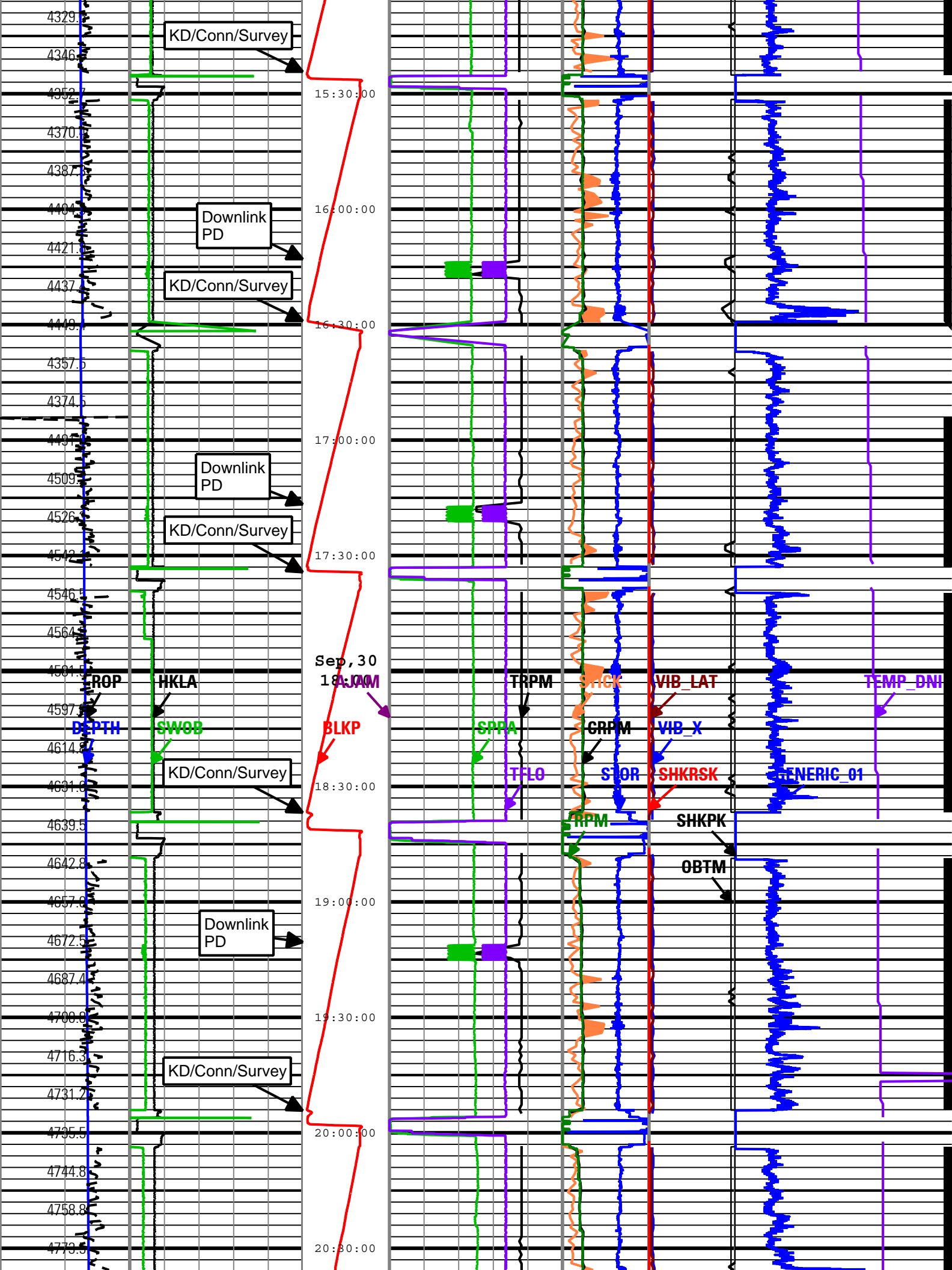
- 1. Header
- 2. Disclaimer
- 3. Contents
- 4. Run 1 PERFORM - Drilling Mechanics Time Log
 - 4.1 Software Version
 - 4.2 Pass Summary
 - 4.3 Log (PERFORM - Drilling Mechanics Time Log 2)
 - 4.4 Parameter Listing
- 5. Tail

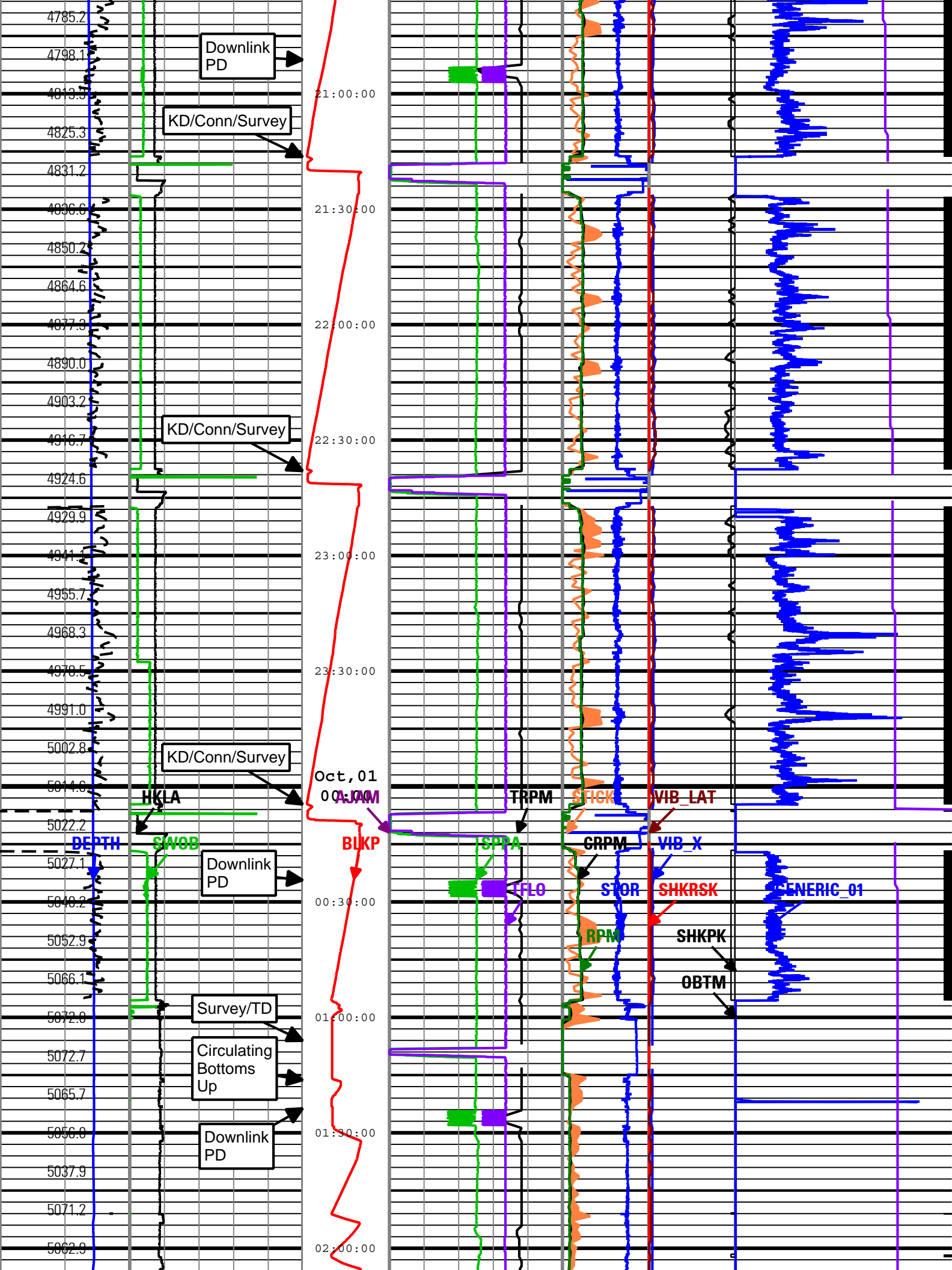
Run 1							
PERFORM - Drilling Mechanics Time Log							
Software Version							
Acquisition System				Version			
MaxWell				1.2.8706.0			
Framework Patch				FWK-BGC-20090918-1.2.8706.1030			
Application Patch				APL-BGC-DnM-1.2.8706.1021			
Tool Elements		Description		Software Version		Firmware Version	
DRILLING_SURFACE		DRILLING_SURFACE		1.2.8706.1009			
Pass Summary							
Run Name	Pass Objective	Direction	Start	Stop	Acquisition Start Date	Acquisition Start Time	
Run 1	TimeLogicalAcq	Down	29-Sep-2009 22:47:51	01-Oct-2009 08:57:44	29-Sep-2009	22:47:51	
Log	Run 1: TimeLogicalAcq A1196654-2586-415D-8121-2156878FEB8A						
Description: PowerPulse Drilling Mechanics Time RT Format: Log (PERFORM - Drilling Mechanics Time Log 2) Index Scale: 2 in per 3600 s Index Type: Time Creation Date: 01-Oct-2009 09:18:18							
AJAM	TELE675:TELE675	ACQ - RT					
BLKP	DRILLING_SURFACE	ACQ - RT					
CRPM	TELE675:TELE675	ACQ - RT					
DEPTH	DnMWorkflow	ACQ - RT					
GENERIC_01	DRILLING_SURFACE	ACQ - RT					
HKLA	DRILLING_SURFACE	ACQ - RT					
OBTM	DnMWorkflow	ACQ - RT					
ROP	DRILLING_SURFACE	ACQ - RT					
RPM	DRILLING_SURFACE	ACQ - RT					
SHKPK	TELE675:TELE675	ACQ - RT					
SHKRSK	TELE675:TELE675	ACQ - RT					
SPPA	DRILLING_SURFACE	ACQ - RT					
STICK	TELE675:TELE675	ACQ - RT					
STOR	DRILLING_SURFACE	ACQ - RT					
SWOB	DRILLING_SURFACE	ACQ - RT					
TEMP_DNI	TELE675:TELE675	ACQ - RT					
TFLO	DRILLING_SURFACE	ACQ - RT					
TRPM	TELE675:TELE675	ACQ - RT					
VIB_LAT	TELE675:TELE675	ACQ - RT					
VIB_X	TELE675:TELE675	ACQ - RT					

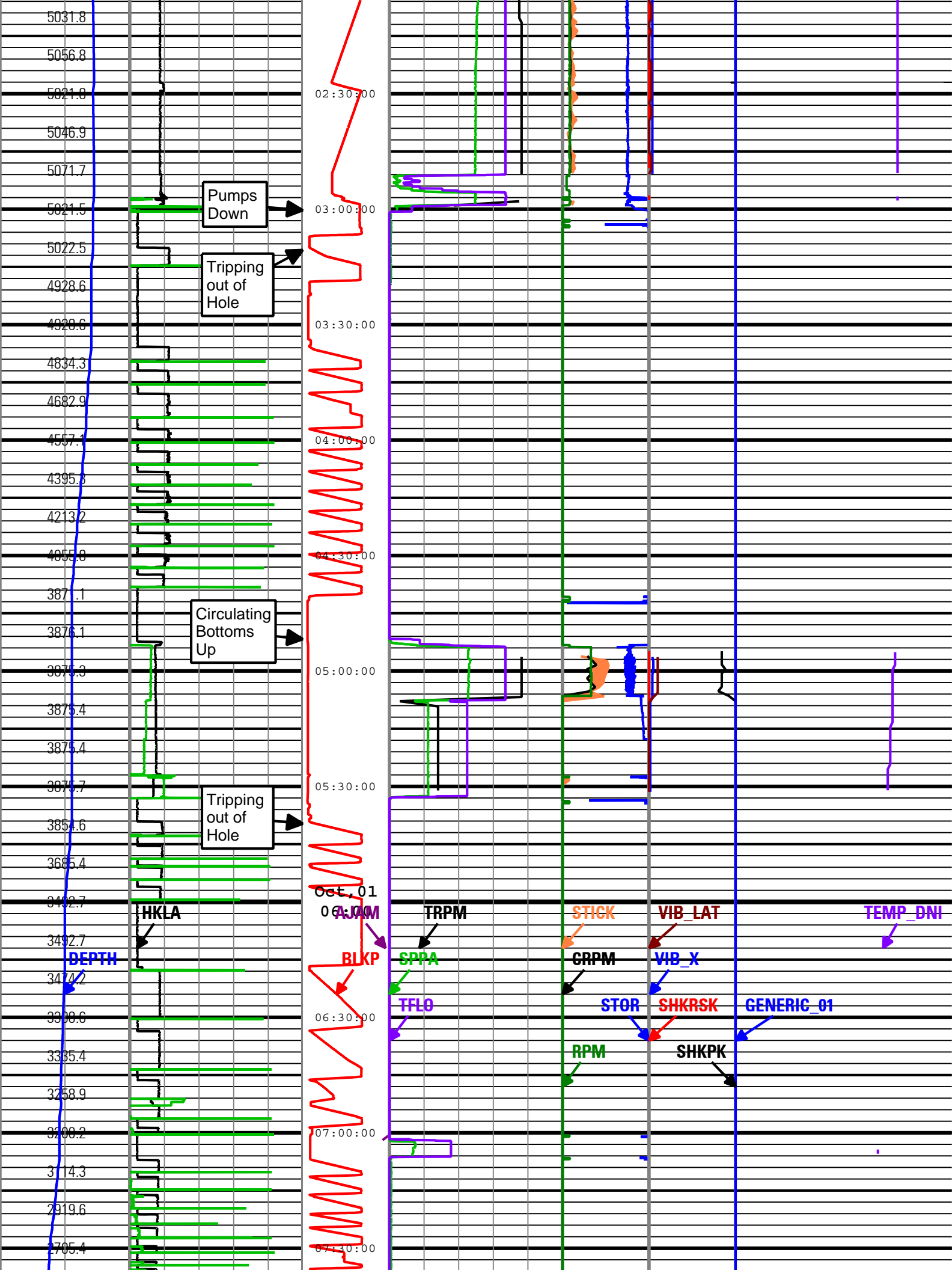


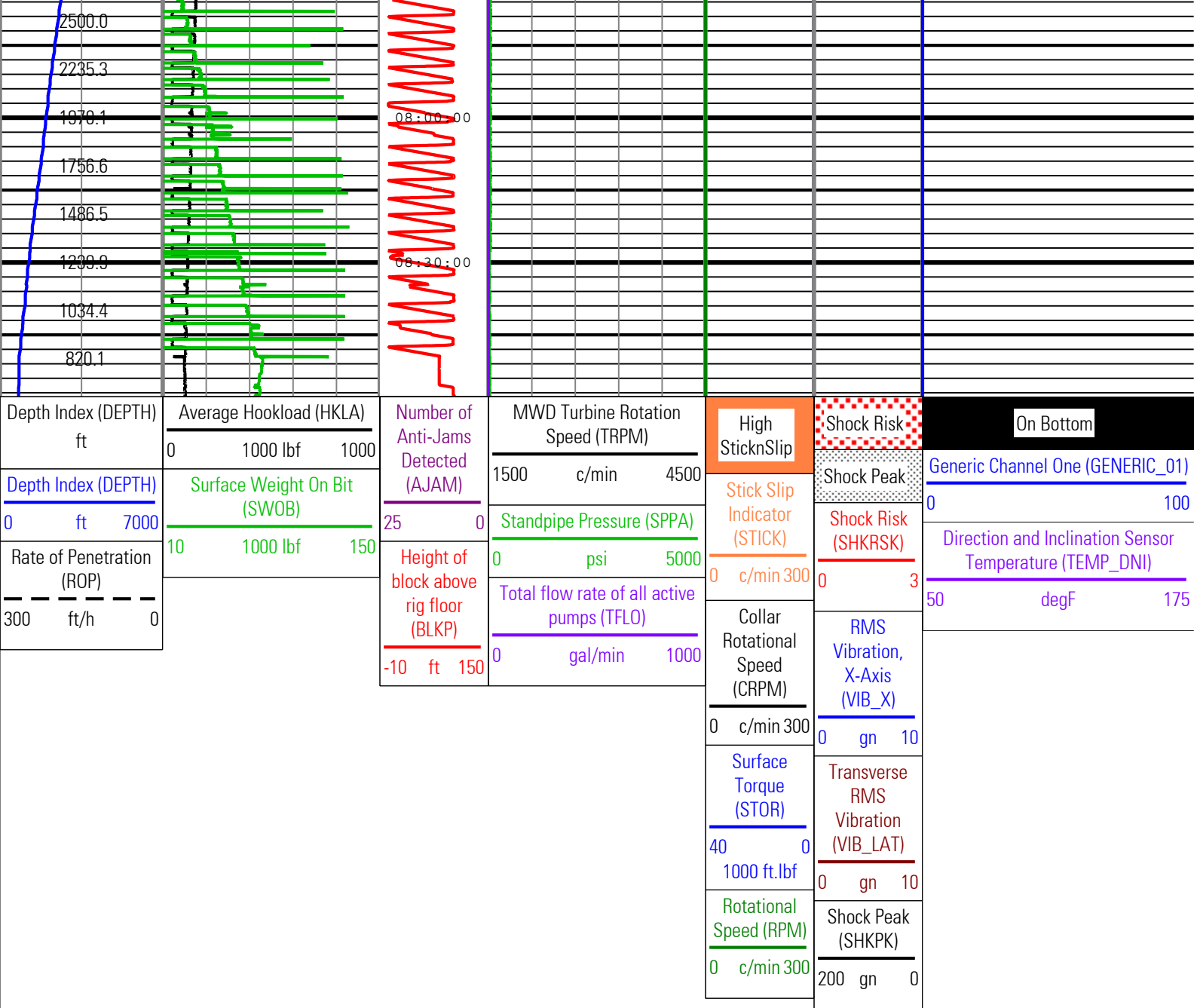












Description: PowerPulse Drilling Mechanics Time RT Format: Log (PERFORM - Drilling Mechanics Time Log 2) Index Scale: 2 in per 3600 s Index Type: Time
Creation Date: 01-Oct-2009 09:18:18

Tool Control Parameters				
Parameter	Description	ToolPath	Value	Unit
OFFBTM_TH	Threshold for deciding whether the bit is off bottom	DnMWWorkflow	0.25	ft

Company:	ExxonMobil Oil Corporation
Well:	Piceance Creek Unit 197 34B8
Field:	Piceance Creek
County:	Rio Blanco
State:	Colorado
Country:	U.S.A

