



**SUPERIOR**  
**Hays,**  
**Kansas**

**MICRO**  
**LOG**

Company MULL DRILLING COMPANY, INC.  
Well #1-14 TALLMAN FARMS "A"  
Field WILDCAT  
County KIOWA  
State COLORADO

Company MULL DRILLING COMPANY, INC.  
Well #1-14 TALLMAN FARMS "A"  
Field WILDCAT  
County KIOWA State COLORADO

Location: API # : 05-061-06836-0000  
1294' FSL & 605' FWL  
SEC 14 TWP 18S RGE 45W  
Permanent Datum GROUND LEVEL Elevation 3937  
Log Measured From KELLY BUSHING 13' A.G.L.  
Drilling Measured From KELLY BUSHING  
Other Services  
CDL/CNL/PE  
DIL/SONIC  
Elevation  
K.B. 3950  
D.F. 3948  
G.L. 3937

Date	12/23/09		
Run Number	TWO		
Depth Driller	5050		
Depth Logger	5050		
Bottom Logged Interval	5027		
Top Log Interval	3200		
Casing Driller	8 5/8"@335'		
Casing Logger	336		
Bit Size	7 7/8		
Type Fluid in Hole	CHEMICAL MUD	CHLORIDES 2,700 PPM	
Density / Viscosity	9.2/84		
pH / Fluid Loss	10.5/8.0		
Source of Sample	FLOWLINE		
Rm @ Meas. Temp	1.20@60F		
Rmf @ Meas. Temp	.900@60F		
Rmc @ Meas. Temp	1.44@60F		
Source of Rmf / Rmc	MEASUREMENT		
Rm @ BHT	.576@125F		
Time Circulation Stopped	5 HOURS		
Time Logger on Bottom	7:00 P.M.		
Maximum Recorded Temperature	125F		
Equipment Number	0836		
Location	HAYS, KANSAS		
Recorded By	JEFF LUEBBERS		
Witnessed By	KEVIN KESSLER		

<<< Fold Here >>>

All interpretations are opinions based on inferences from electrical or other measurements and we cannot and do not guarantee the accuracy or correctness of any interpretation, and we shall not, except in the case of gross or willful negligence on our part, be liable or responsible for any loss, costs, damages, or expenses incurred or sustained by anyone resulting from any interpretation made by any of our officers, agents or employees. These interpretations are also subject to our general terms and conditions set out in our current Price Schedule.

**Comments**

THANK YOU FOR USING SUPERIOR WELL SERVICES HAYS, KANSAS (785) 628-6395  
DIRECTIONS  
BRANDON, CO. & HWY 96 E. EDGE @MM #186, 3 N. ON RD. #59, 1/4 E., N. INTO

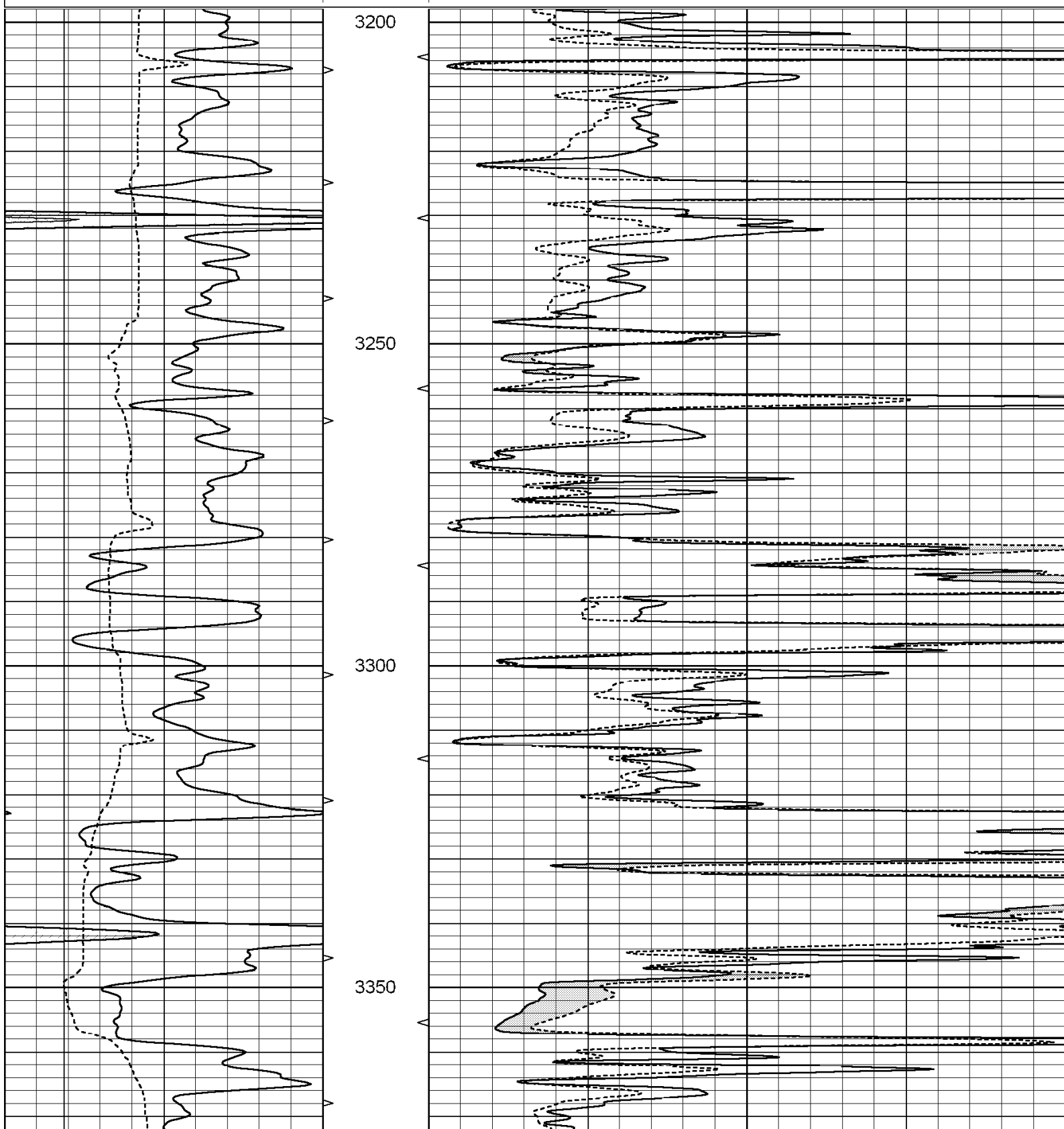


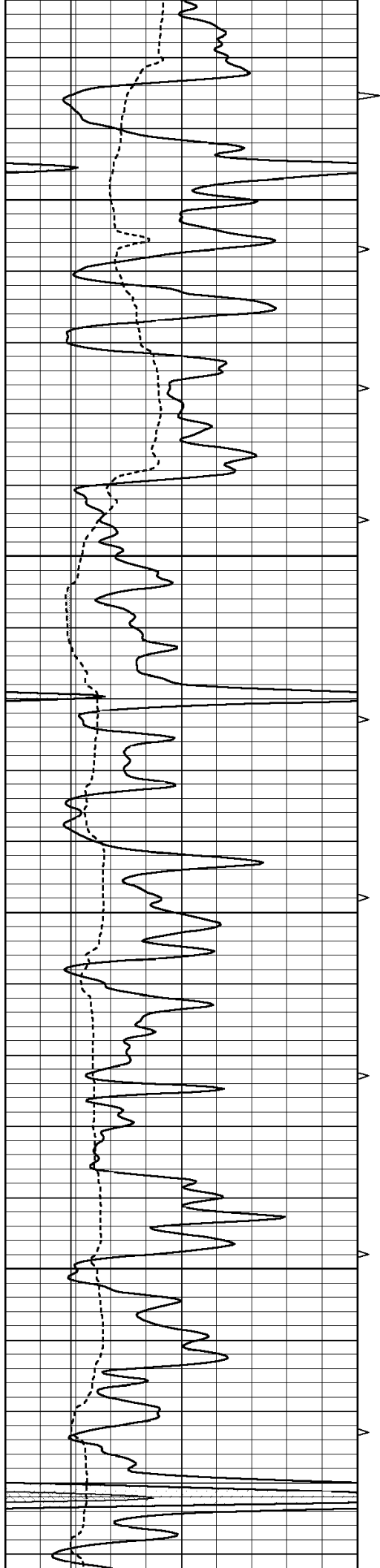
**SUPERIOR**  
**Hays,**  
**Kansas**

**MAIN SECTION**

Database File: 004396pe.db  
Dataset Pathname: pass7.2  
Presentation Format: micro  
Dataset Creation: Tue Dec 22 23:03:27 2009  
Charted by: Depth in Feet scaled 1:240

0	GAMMA RAY (GAPI)	150	ABHV	0	MEL1.5 (Ohm-m)	40
6	CALIPER (in)	16	10 (ft3) 0	0	MEL2.0 (Ohm-m)	40
			TBHV			
			0 (ft3) 10			



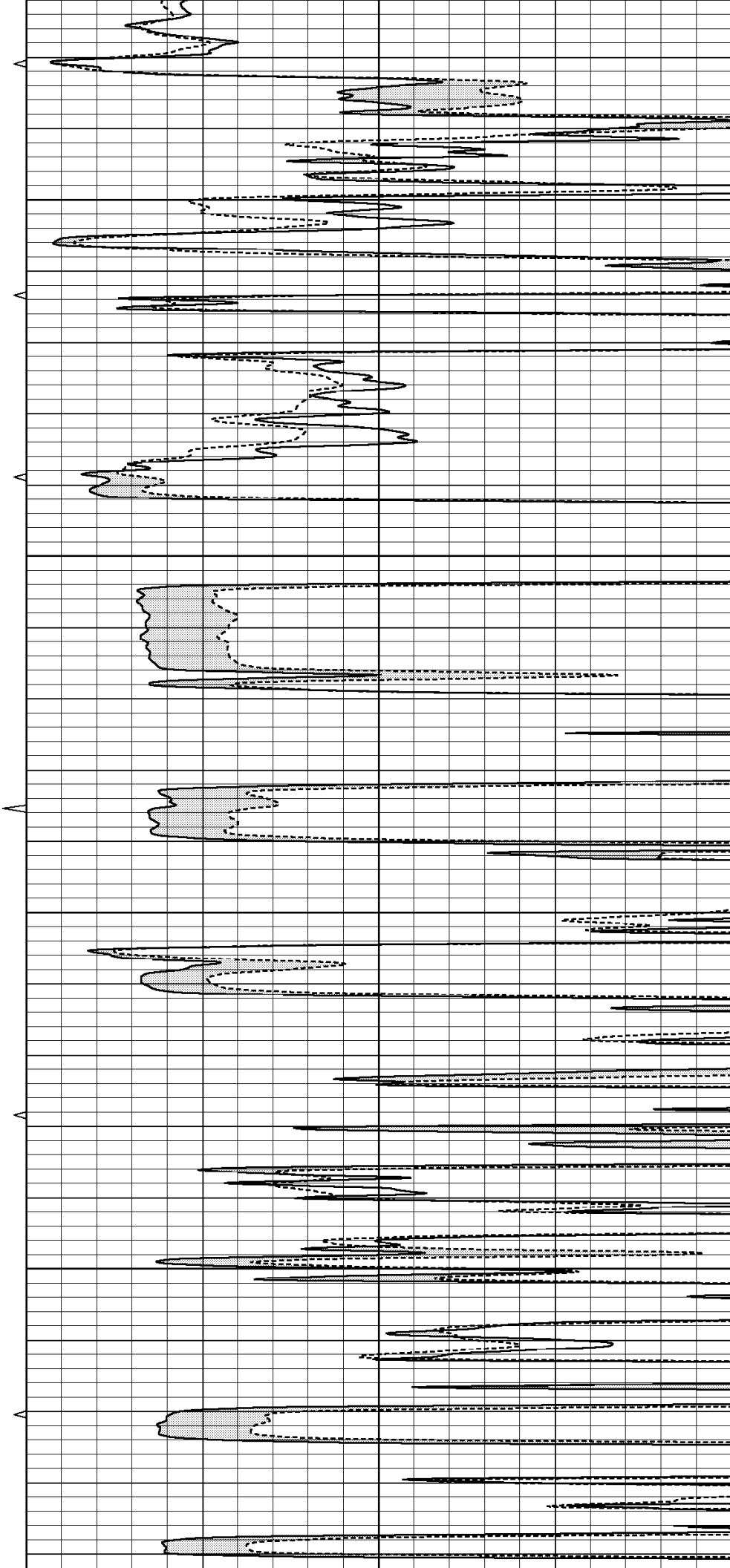


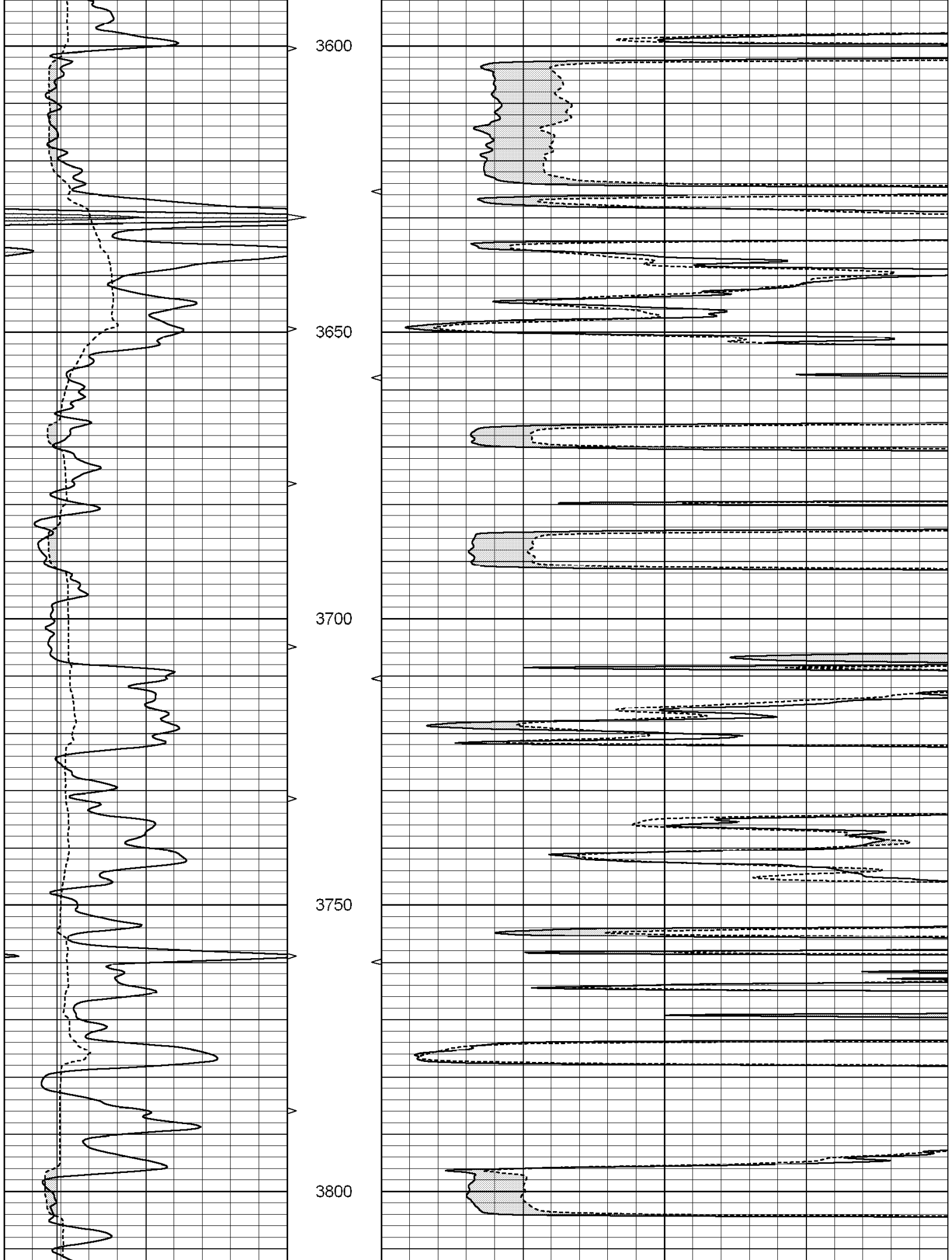
3400

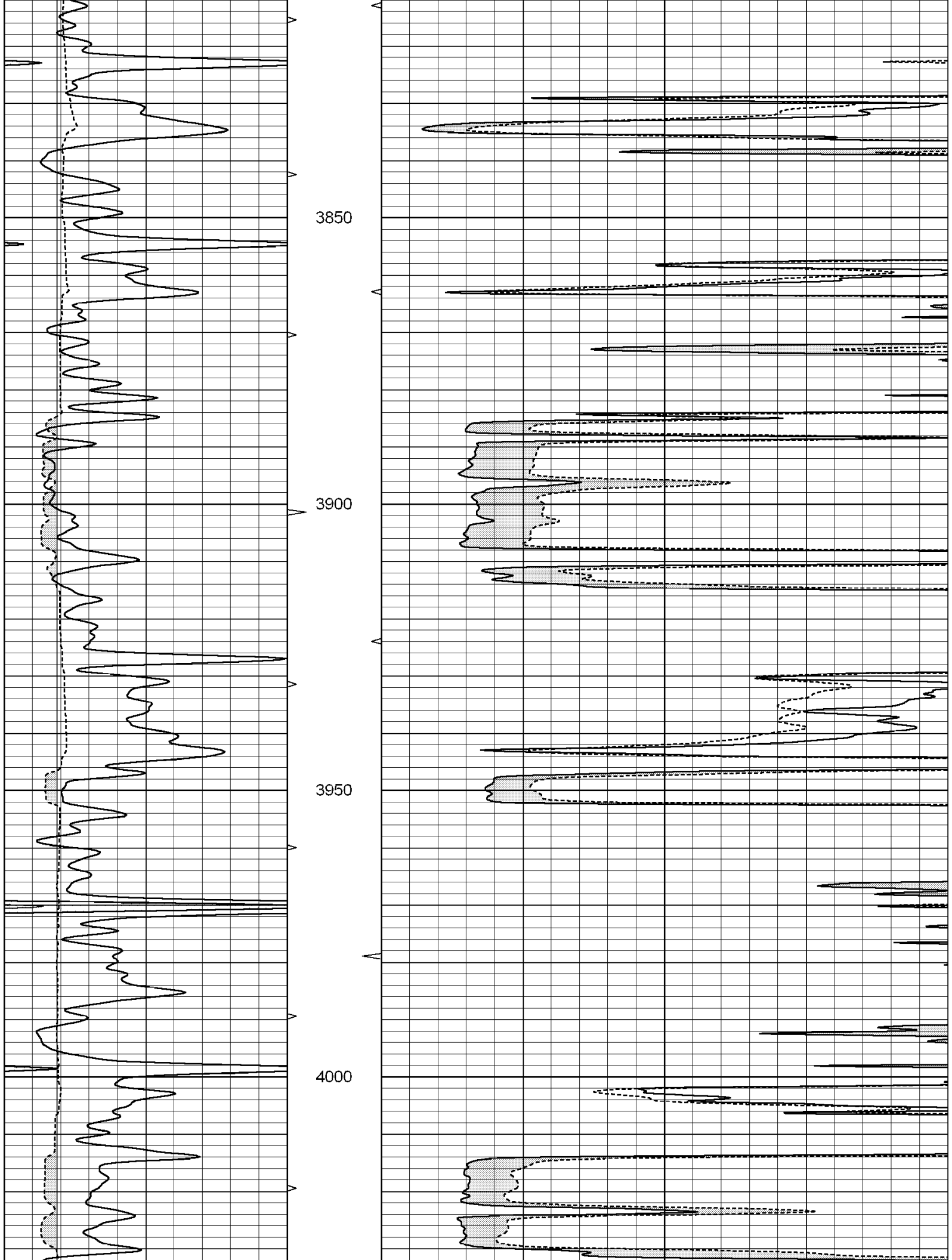
3450

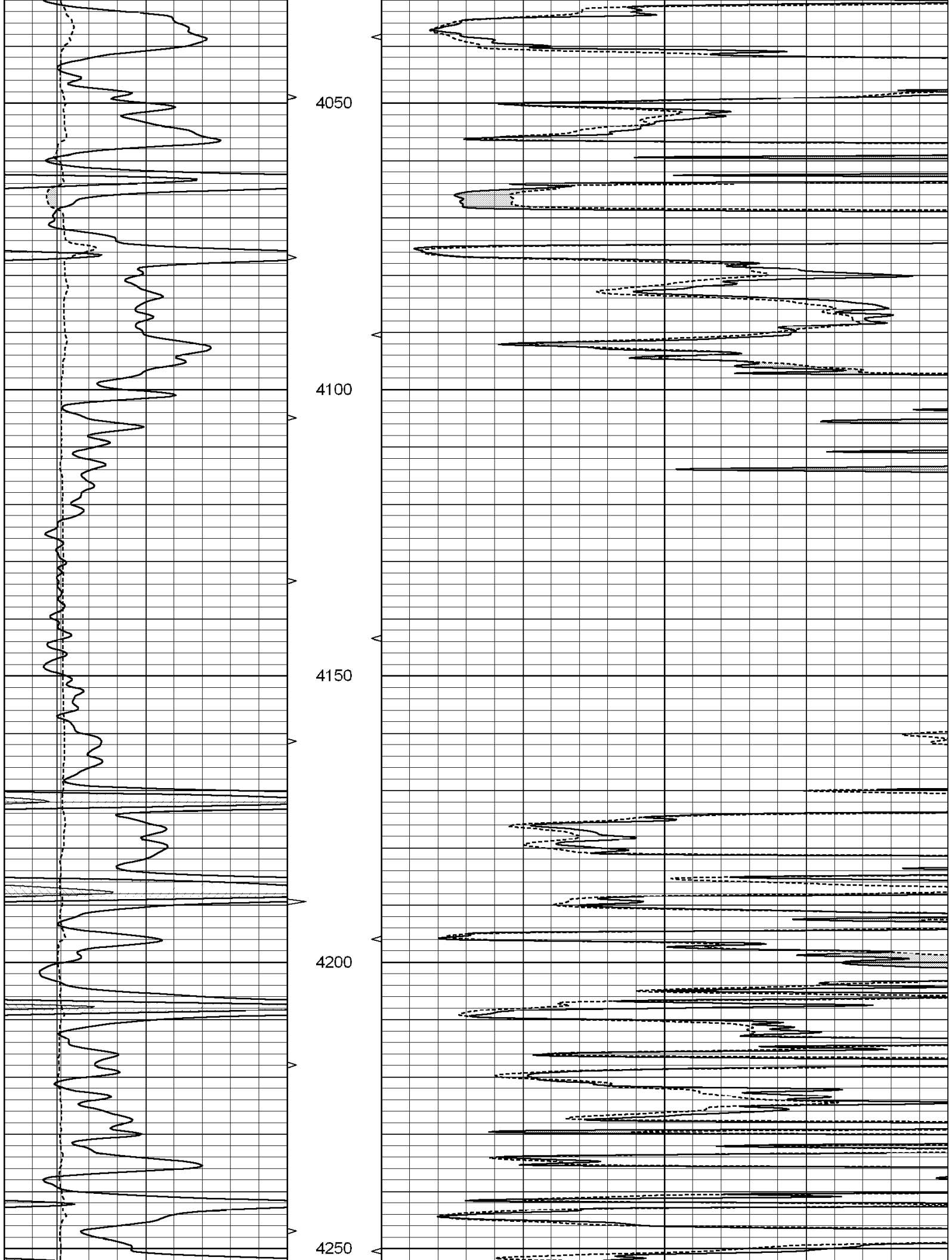
3500

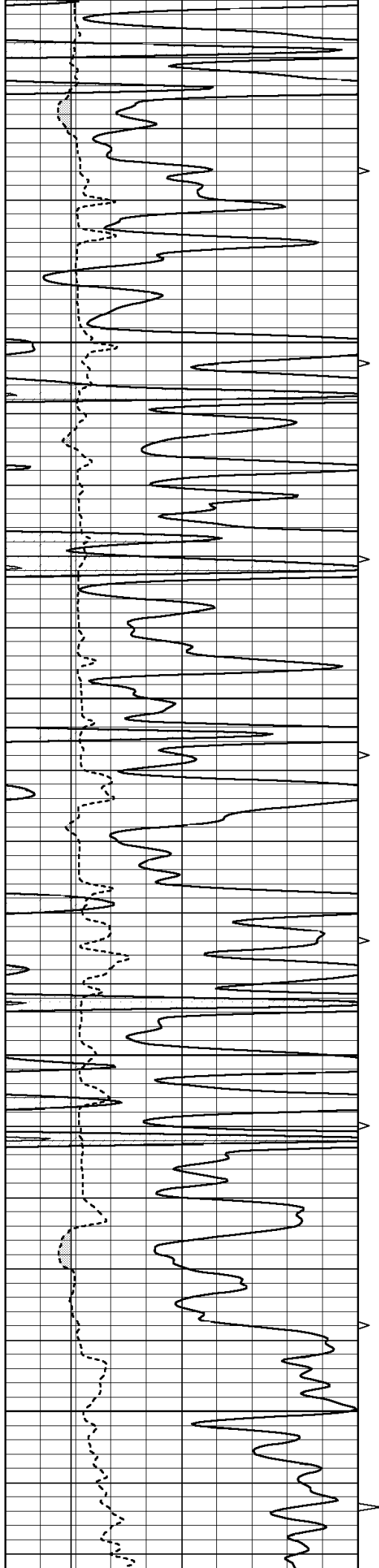
3550









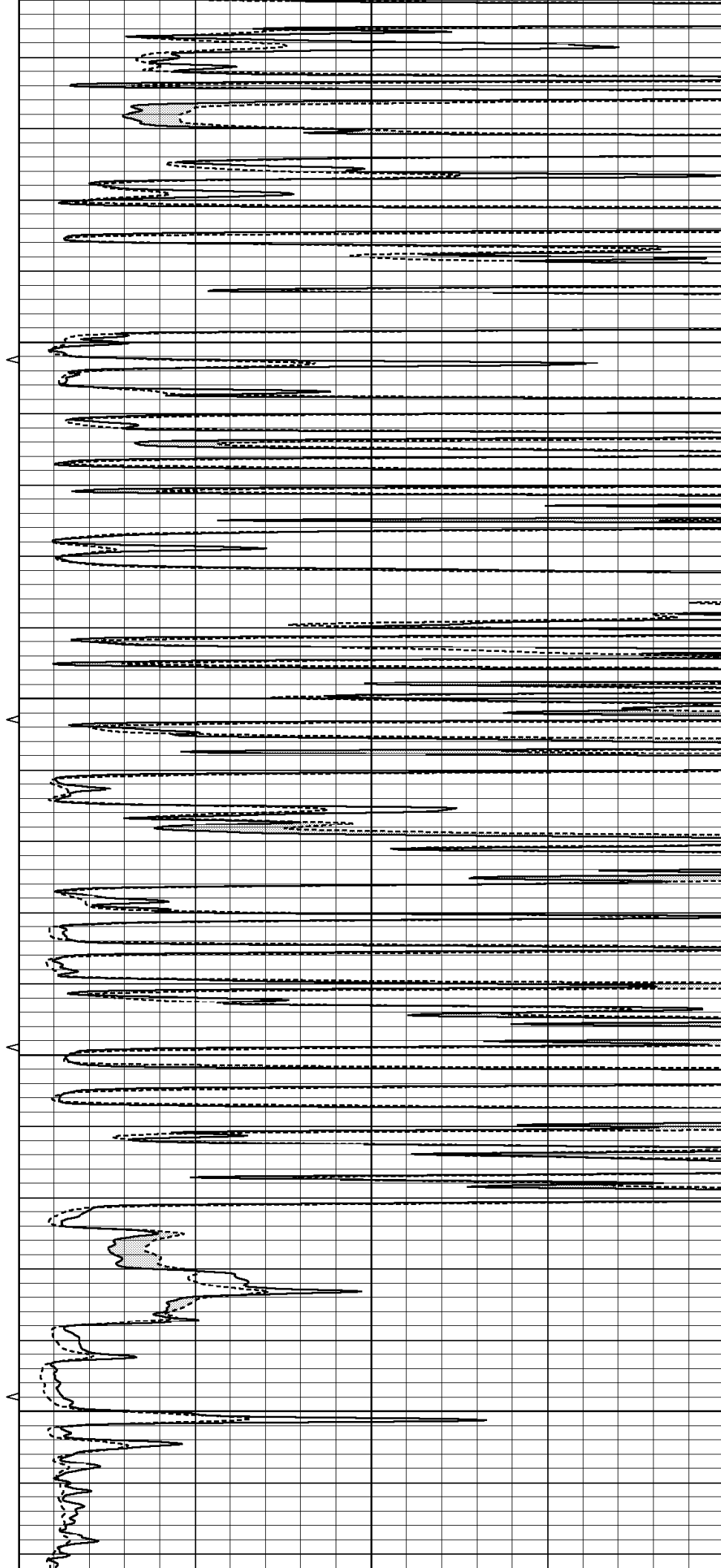


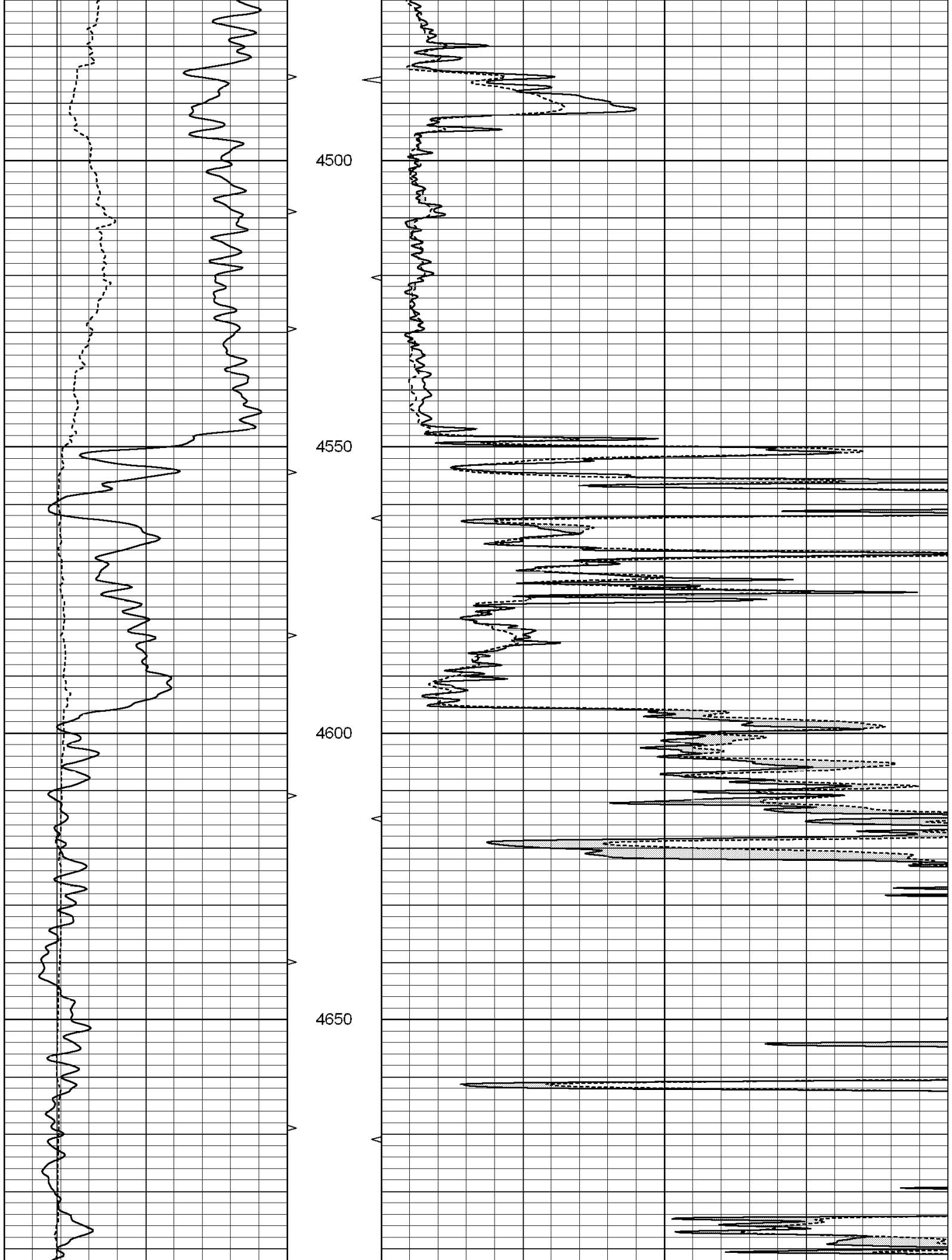
4300

4350

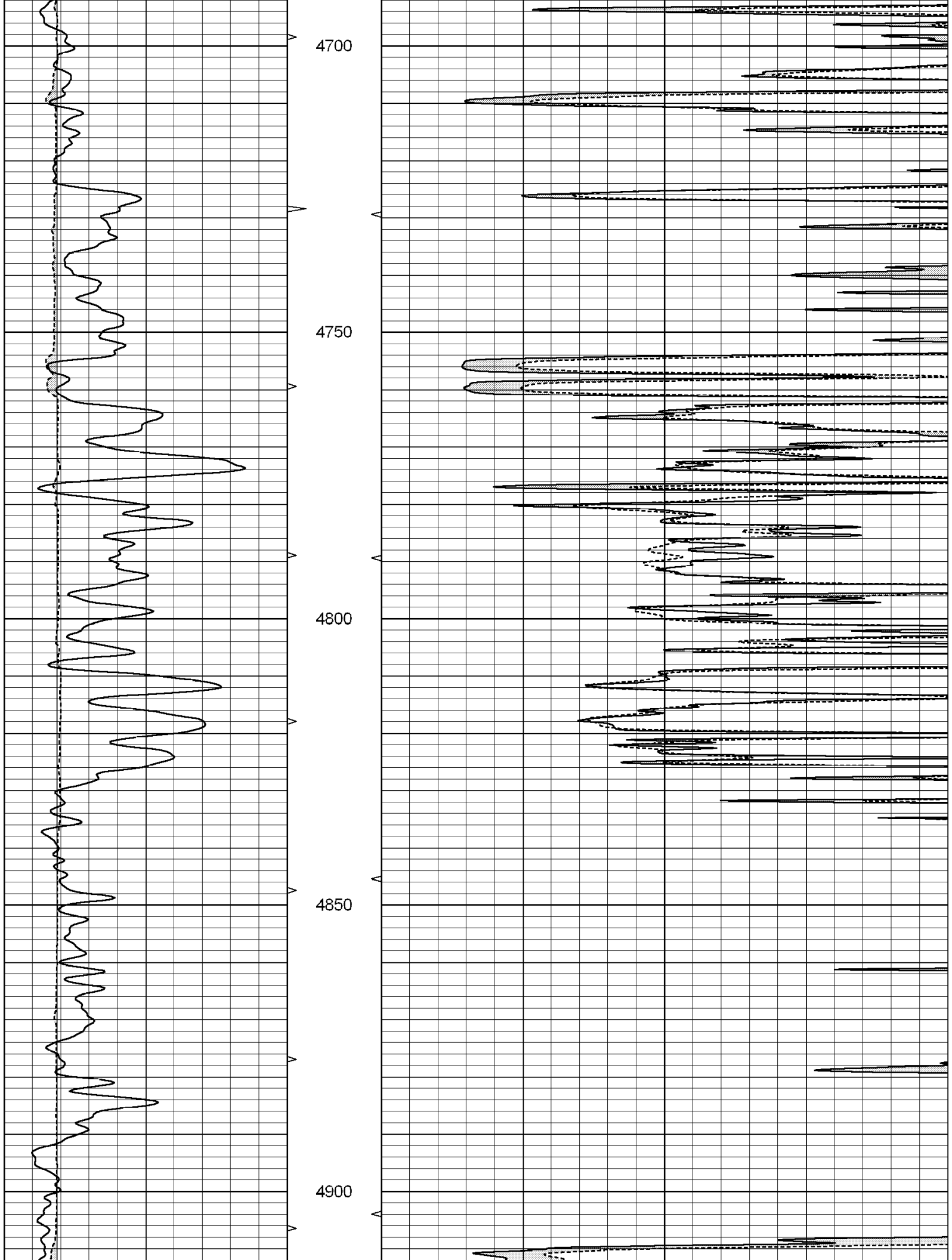
4400

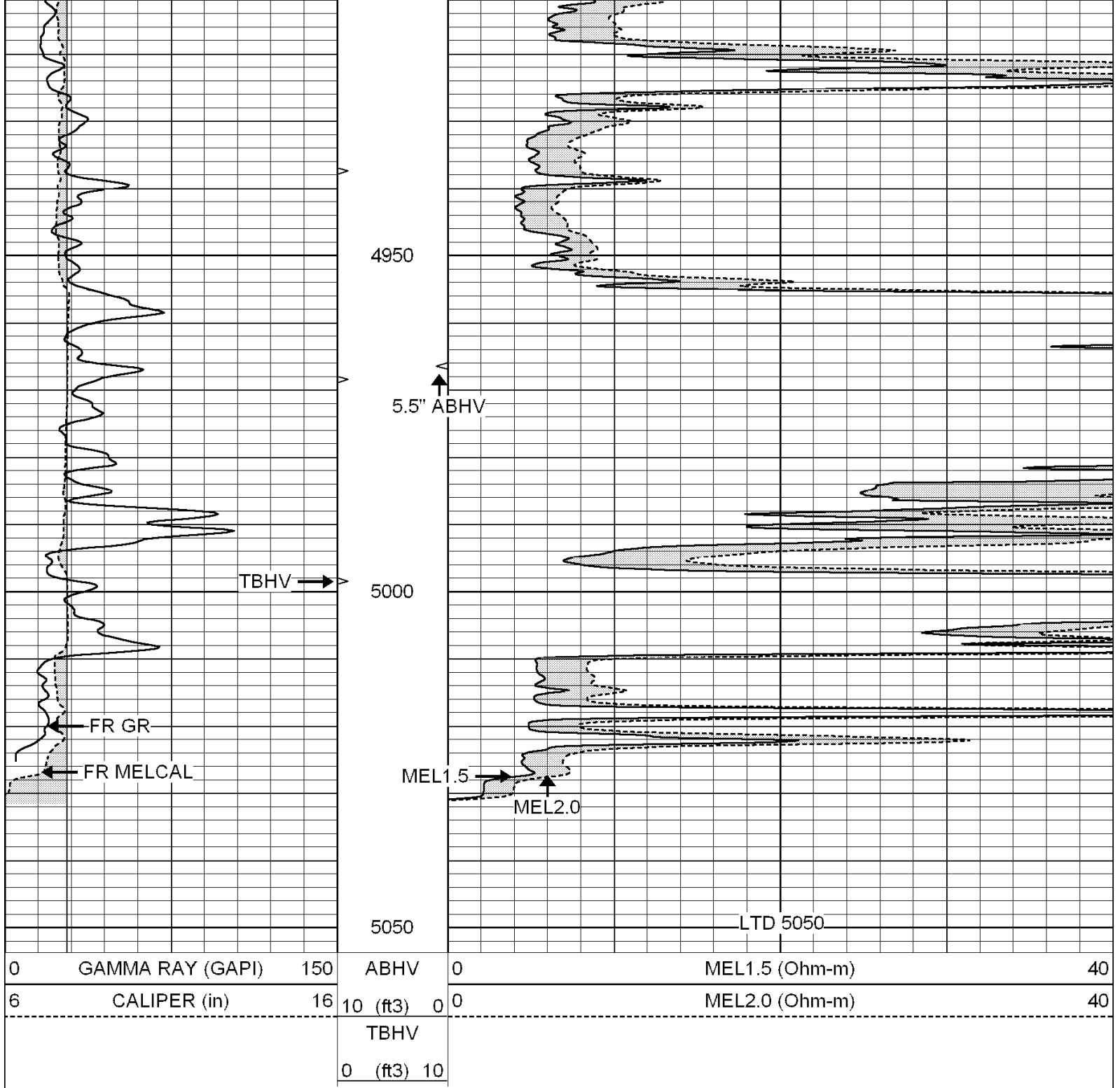
4450











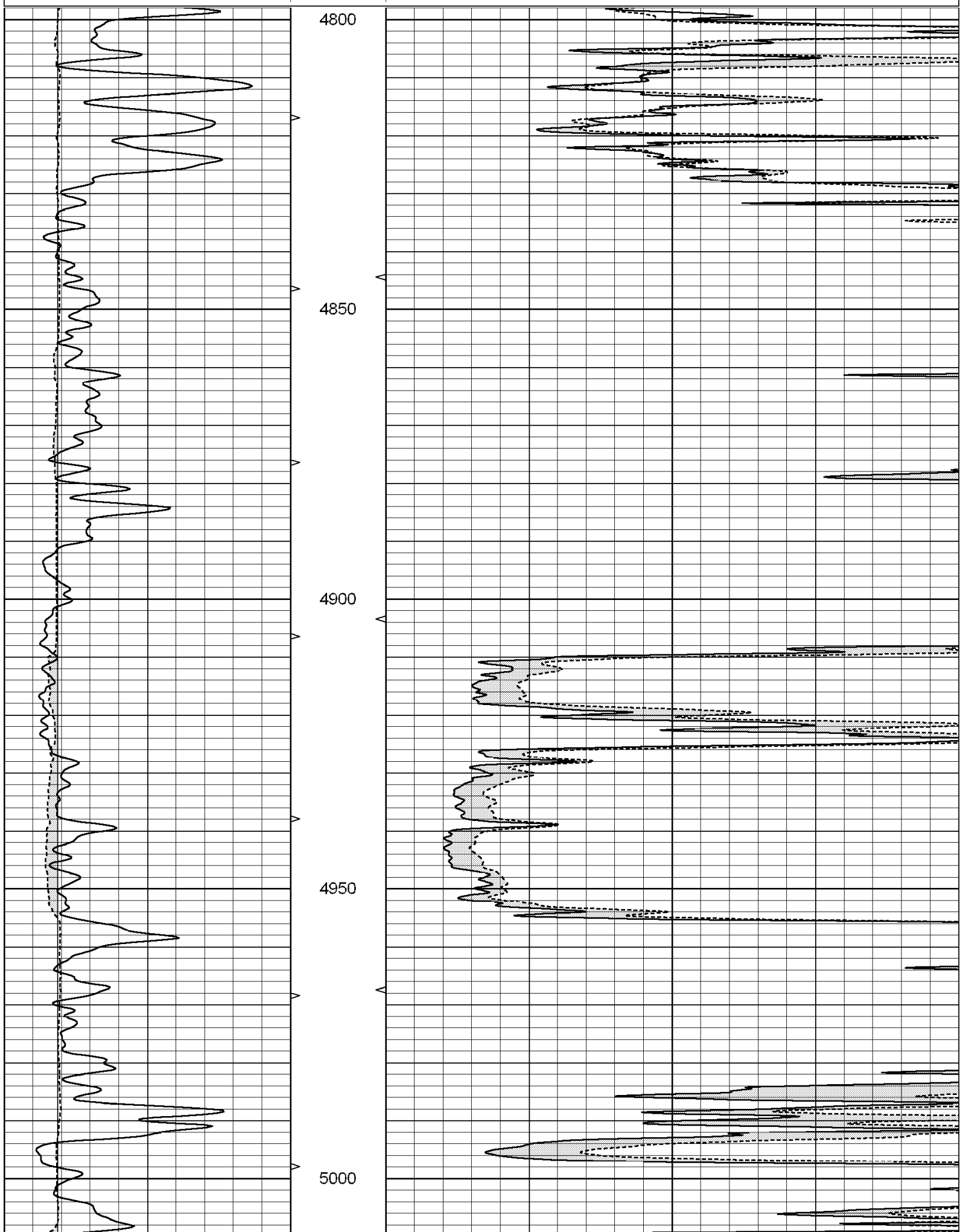
SUPERIOR  
Hays,  
Kansas

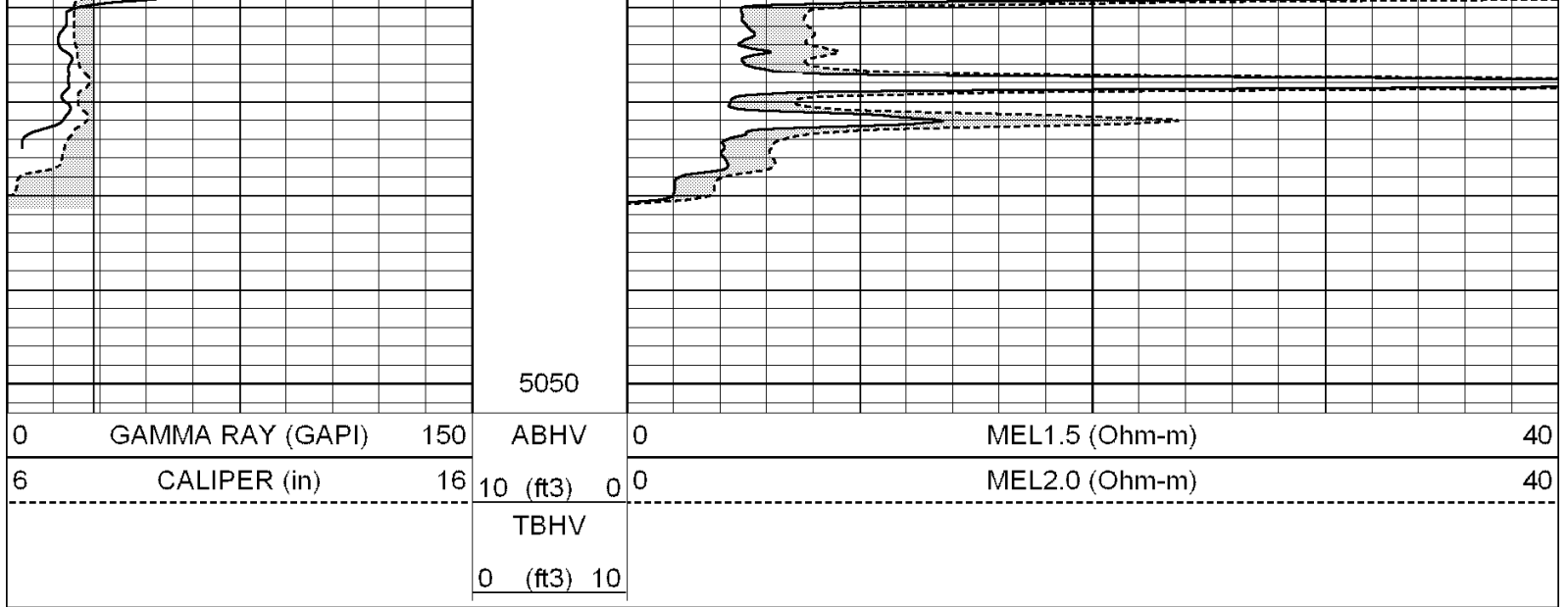
# REPEAT SECTION

Database File: 004396pe.db  
 Dataset Pathname: pass6.1  
 Presentation Format: micro  
 Dataset Creation: Tue Dec 22 22:05:23 2009  
 Charted by: Depth in Feet scaled 1:240

0	GAMMA RAY (GAPI)	150	ABHV	0	MEL1.5 (Ohm-m)	40
6	CALIPER (in)	16	10 (ft3)	0	MEL2.0 (Ohm-m)	40
			TBHV			

TDN  
0 (ft) 10





Calibration Report			
Database File:	004396pe.db		
Dataset Pathname:	pass7.2		
Dataset Creation:	Tue Dec 22 23:03:27 2009		
MICRO Calibration Report			
Serial Number:	MICRO5		
Tool Model:	PROBE		
Performed:	Tue Dec 22 21:41:36 2009		
Caliper Calibration:	Gain=3.433	Offset=-0.742	
	Low Cal	High Cal	
References	6.200	14.000	
Readings	2.022	4.294	
1.5" Calibration:	Gain=37.000	Offset=-1.000	
	Low Cal	High Cal	
References	0.000	20.000	
Readings	0.011	0.994	
2" Calibration:	Gain=42.000	Offset=-1.600	
	Low Cal	High Cal	
References	0.000	20.000	
Readings	0.015	0.903	
Gamma Ray Calibration Report			
Serial Number:	GR4		
Tool Model:	OPEN		
Performed:	Tue Dec 22 21:41:32 2009		
Calibrator Value:	200.0	GAPI	
Background Reading:	0.0	cps	
Calibrator Reading:	189.0	cps	
Sensitivity:	0.7500	GAPI/cps	