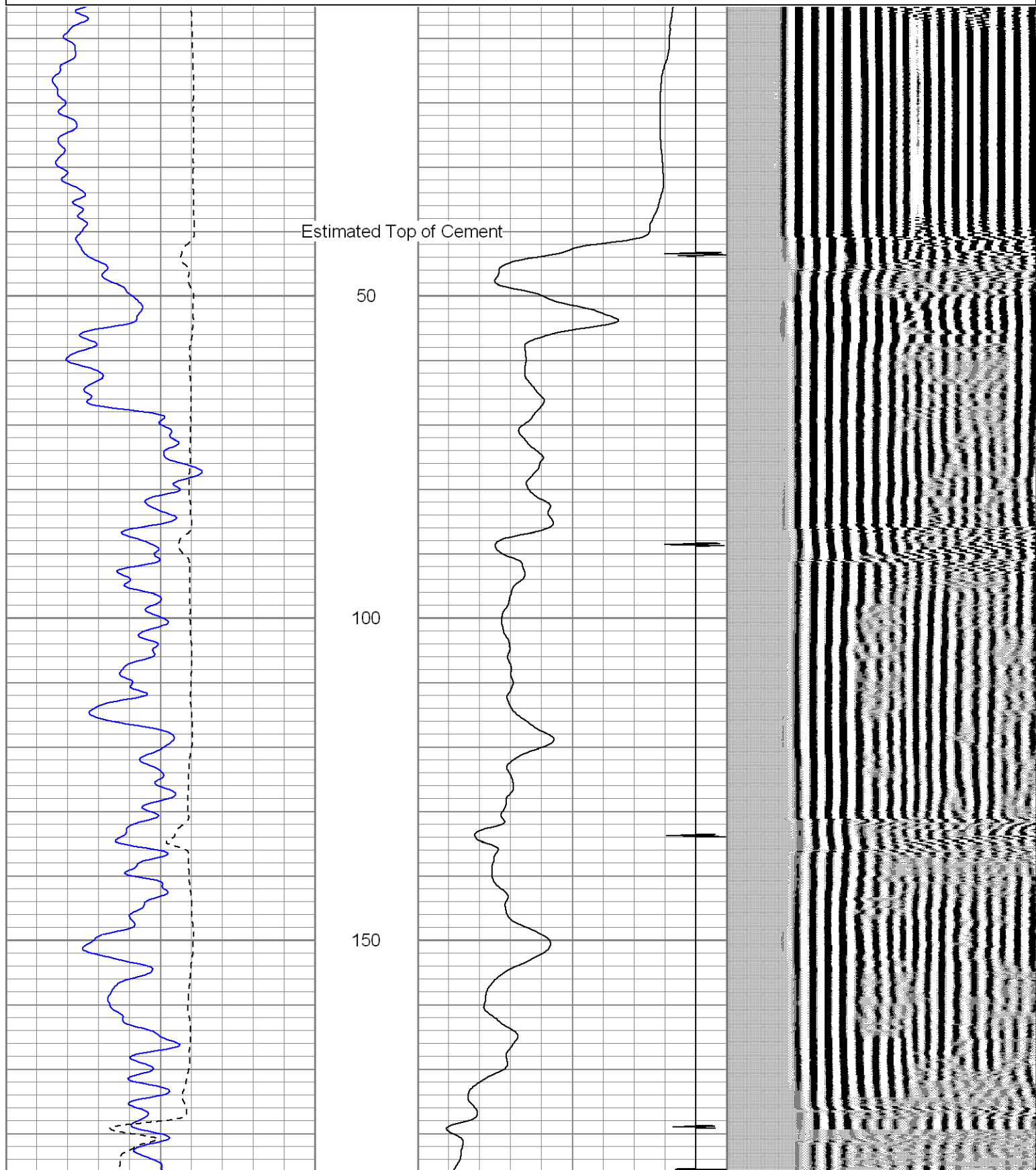
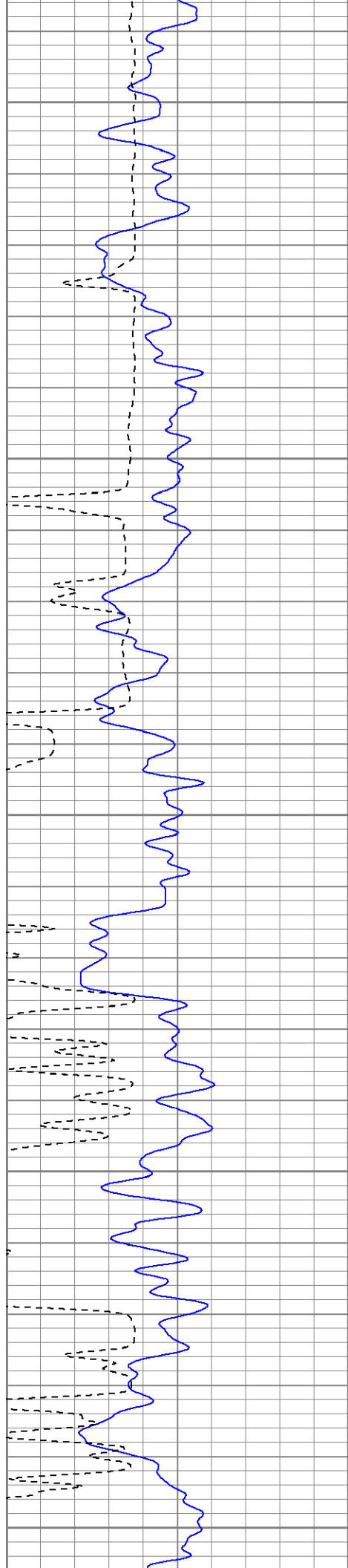


<<< Fold Here >>>
All interpretations are opinions based on inferences from electrical or other measurements and we cannot and do not guarantee the accuracy or correctness of any interpretation, and we shall not, except in the case of gross or willful negligence on our part, be liable or responsible for any loss, costs, damages, or expenses incurred or sustained by anyone resulting from any interpretation made by any of our officers, agents or employees. These interpretations are also subject to our general terms and conditions set out in our current Price Schedule.
Comments
XTO Hill stay on main road past Dead Horse, stay on main road past Beige Tanks, down thru Alamosa Ca take hard left before Big Rocks, dead end on location. CBL ran under 1000 PSI. Top Short Joint @ 1083'+ Bottom of Short Joint @ 1088'+.

Database File: hillranch31-16b.db
Dataset Pathname: pass3.1
Presentation Format: cblsec
Dataset Creation: Thu Feb 04 09:51:05 2010 by Calc Open-Cased 071220
Charted by: Depth in Feet scaled 1:240

0	GR (GAPI)	200	18	CCL	-2	200	VDL	1200
200	GR (GAPI)	400	0	AMP3 (mV)	100			
400	TT3 (usec)	200						
<hr/>								





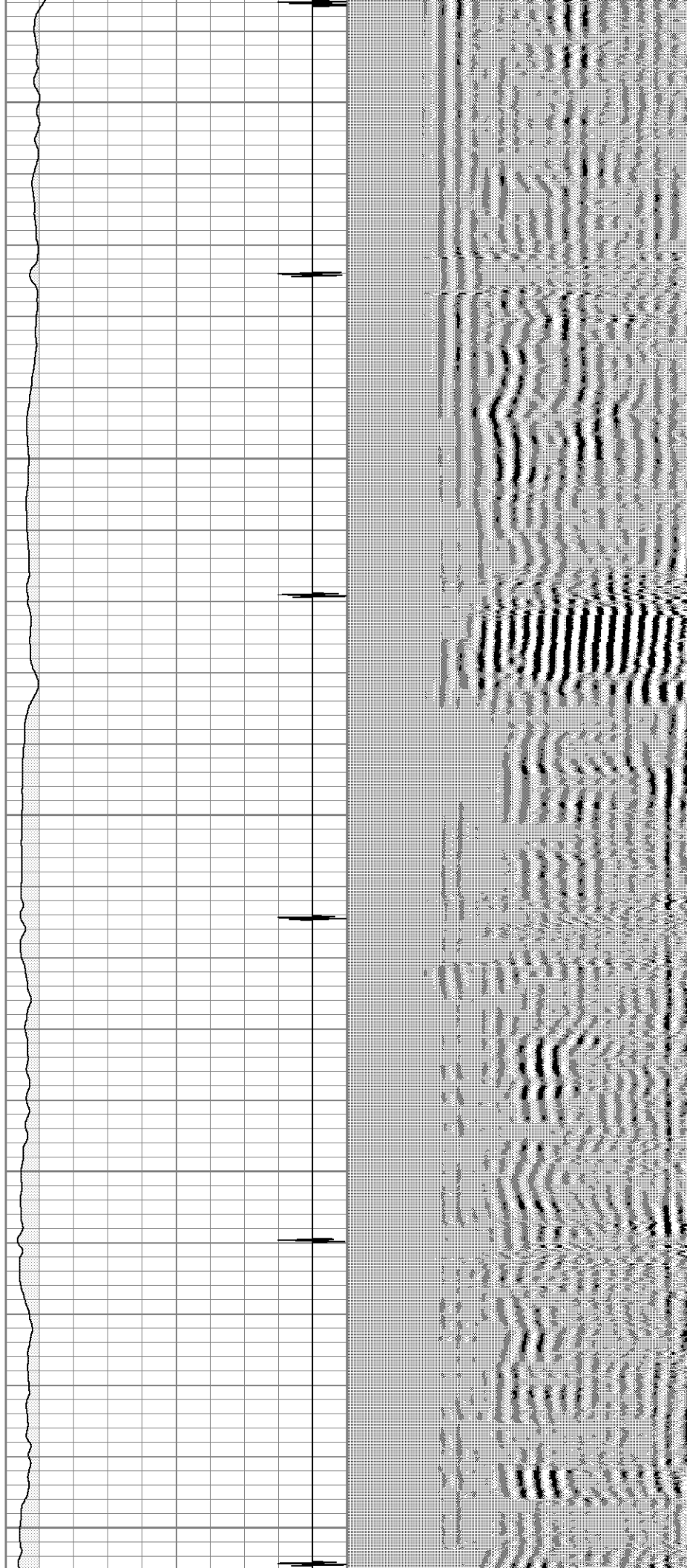
200

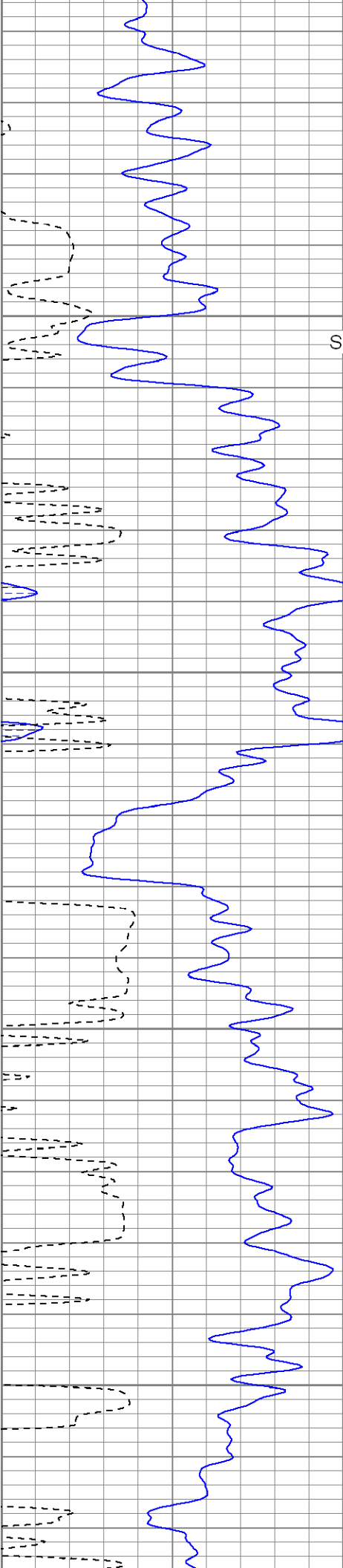
250

300

350

400



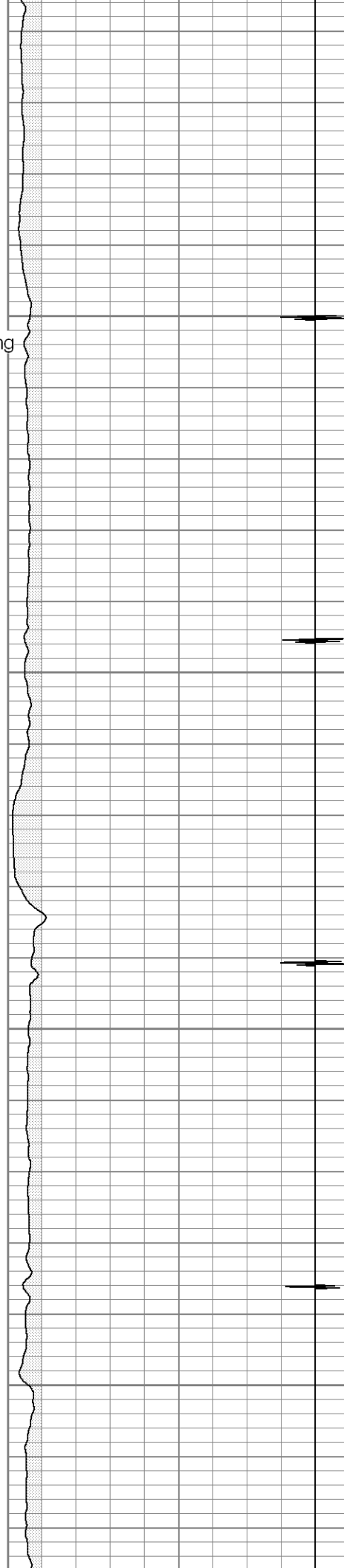


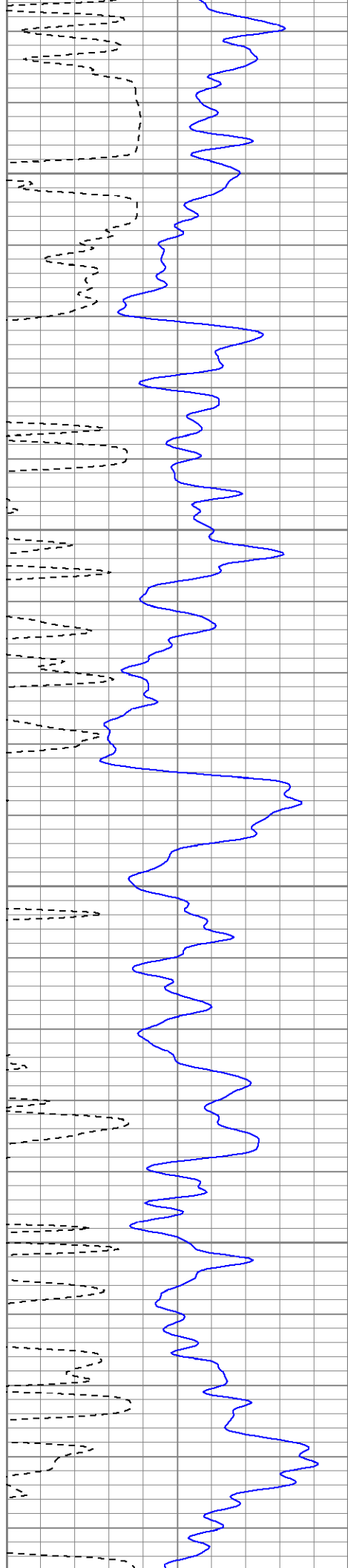
450
Surface Casing

500

550

600



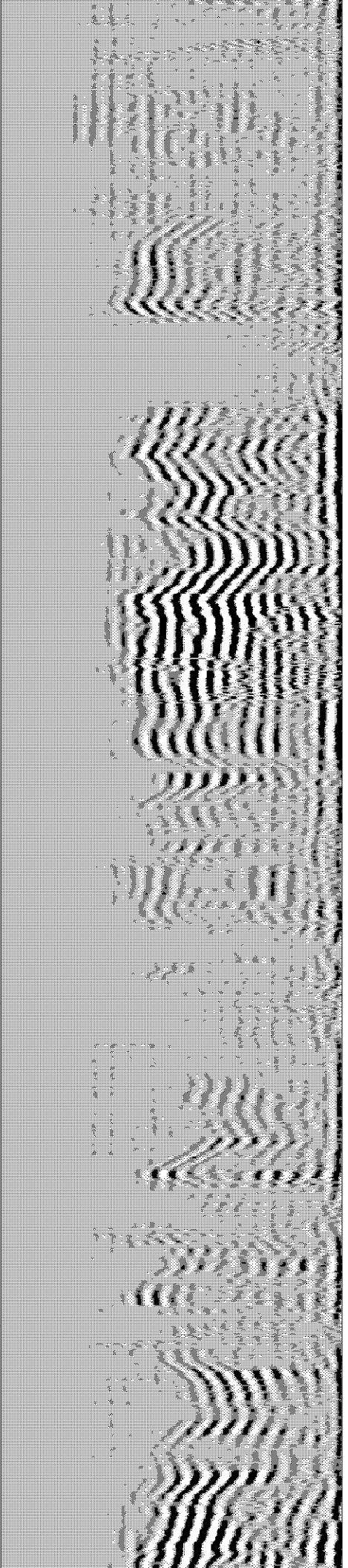
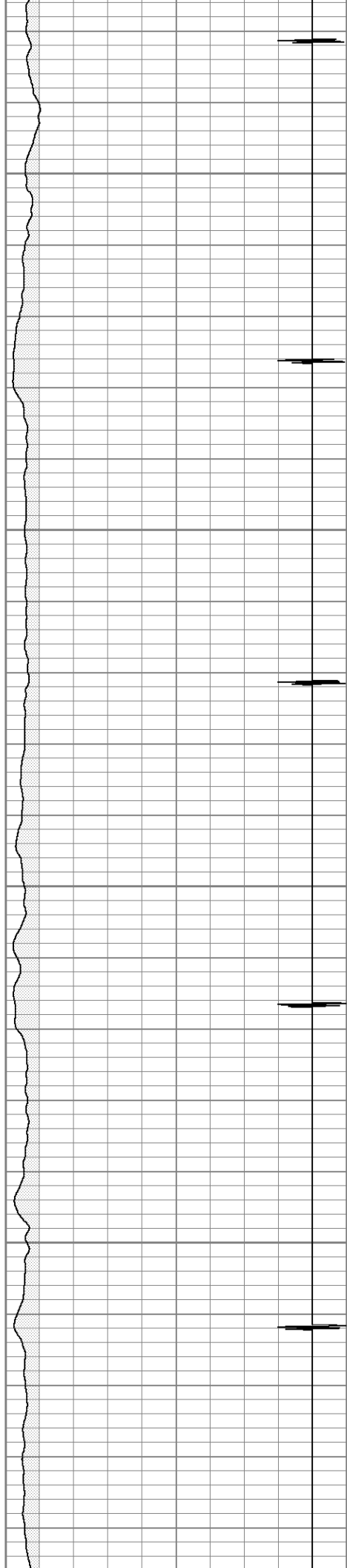


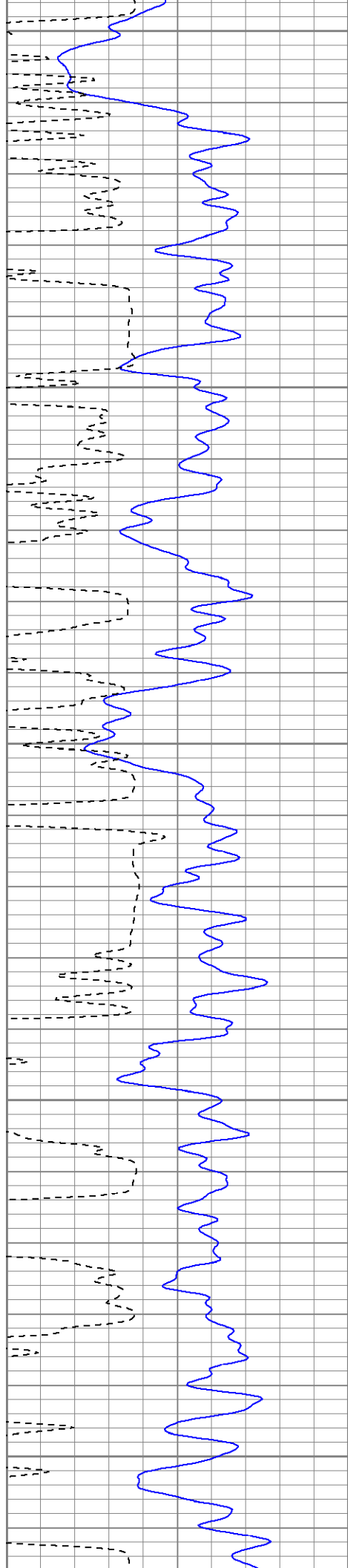
650

700

750

800





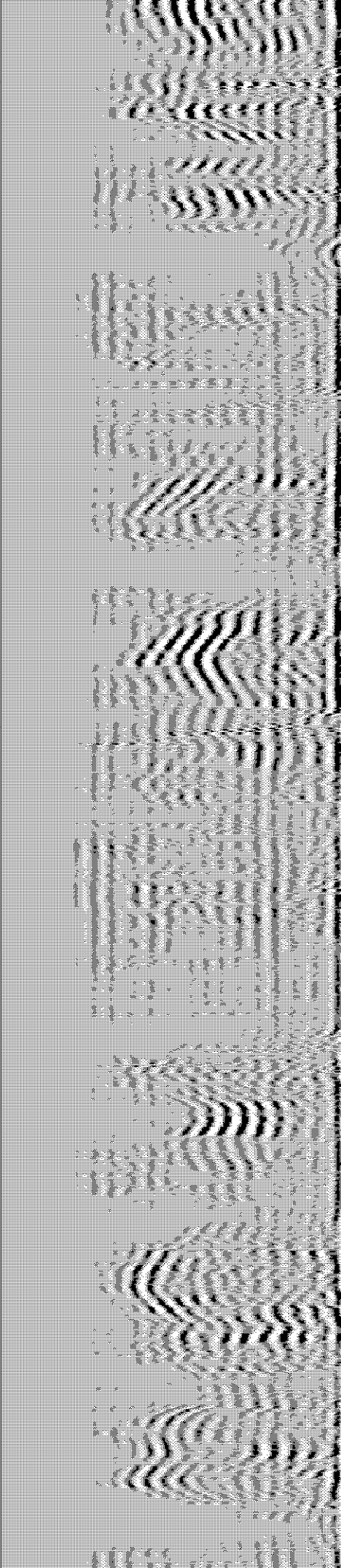
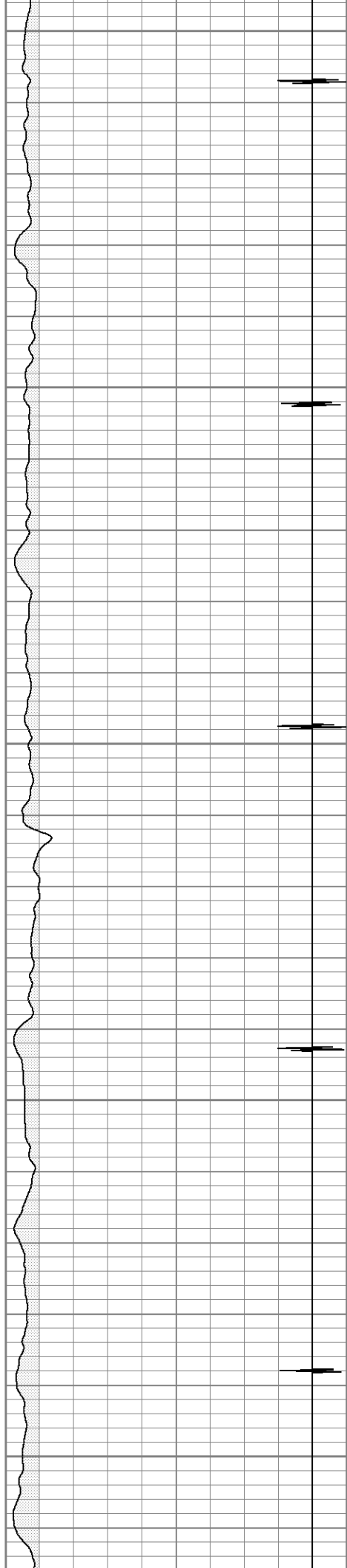
850

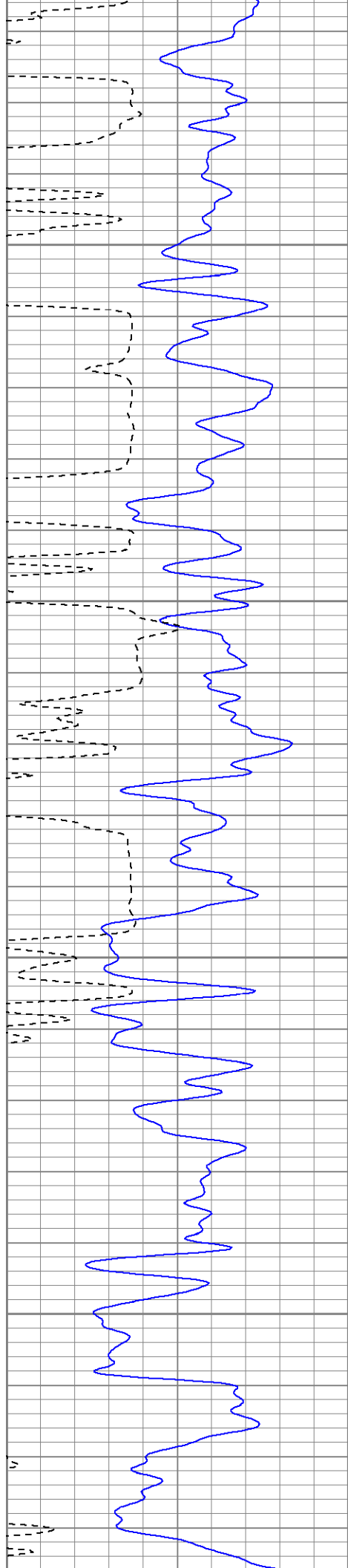
900

950

1000

1050





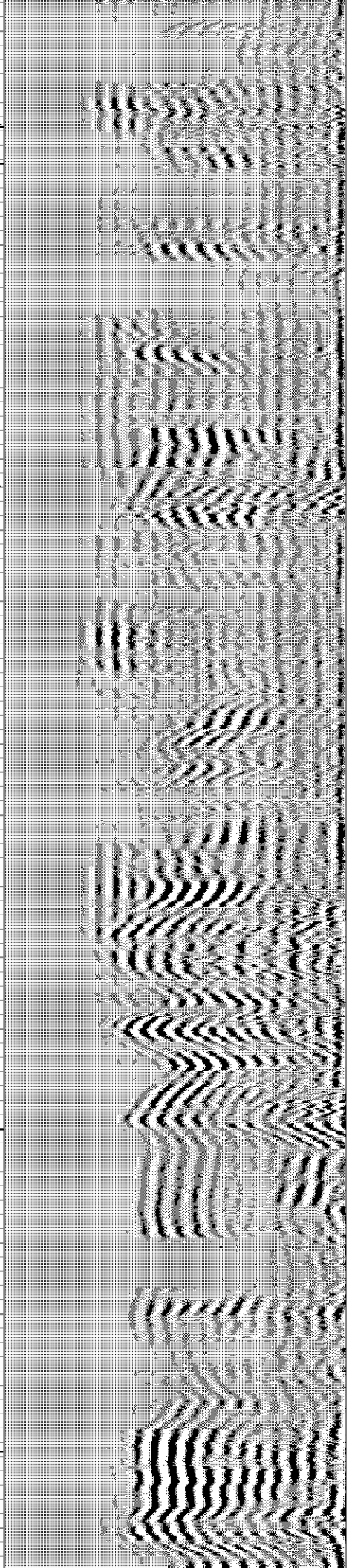
1100

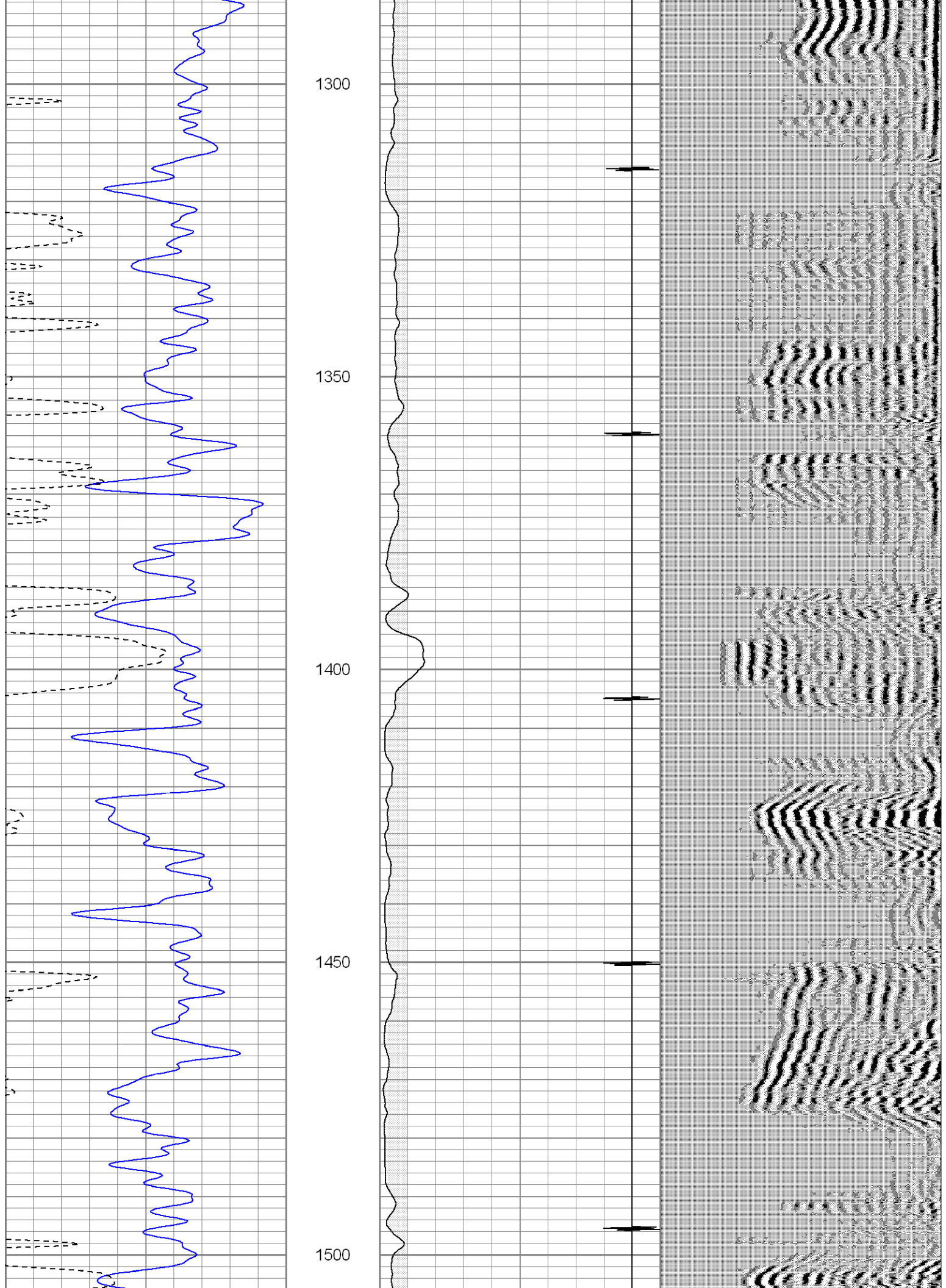
1150

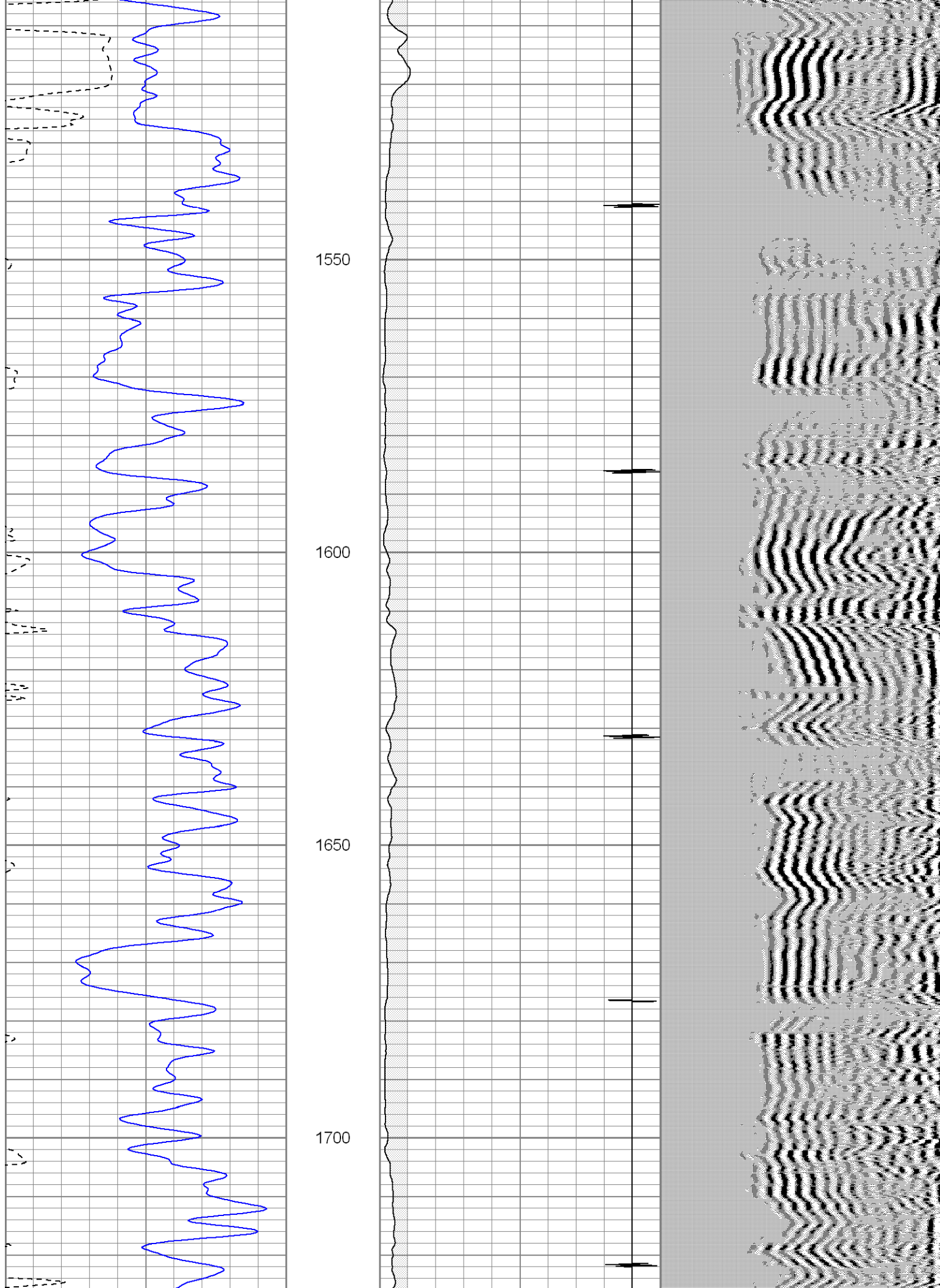
1200

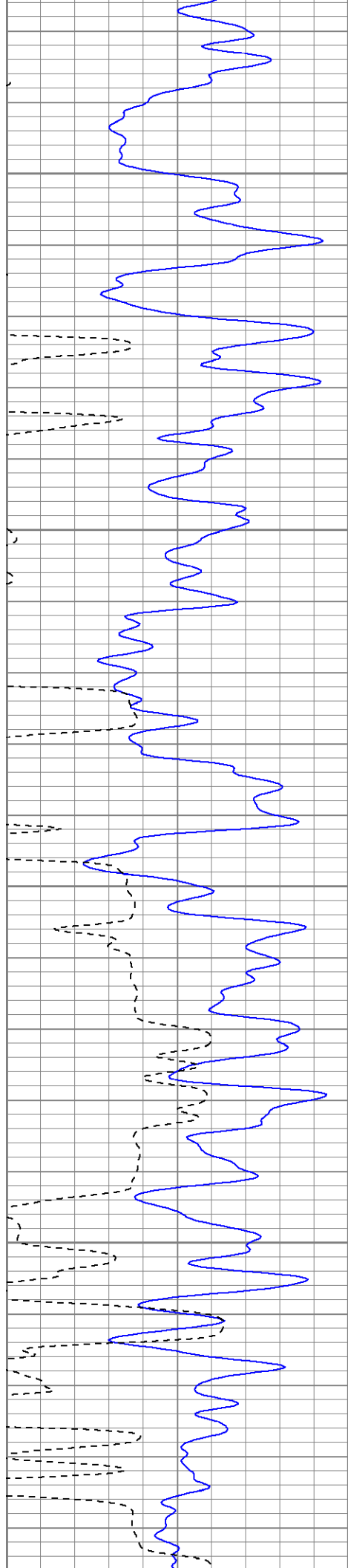
1250

Short Joint







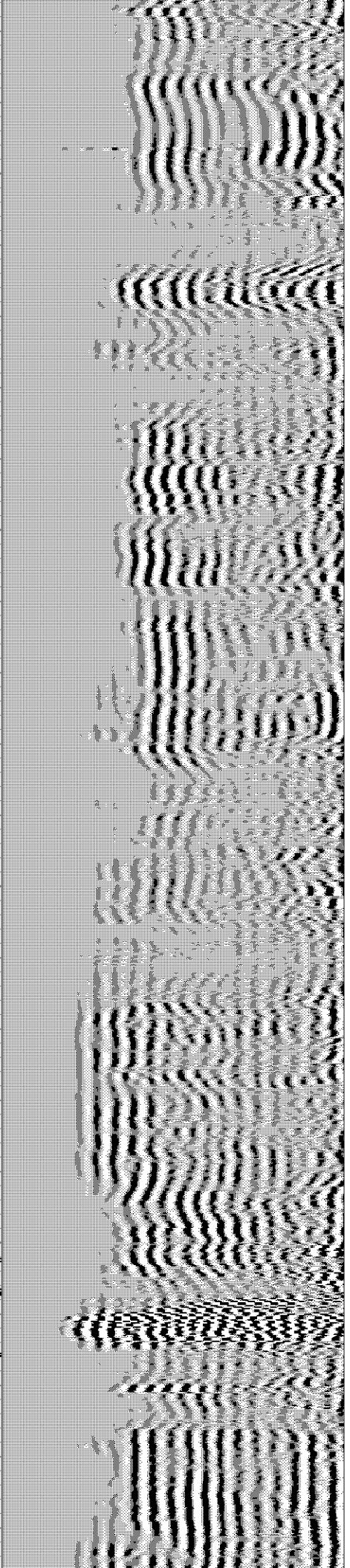
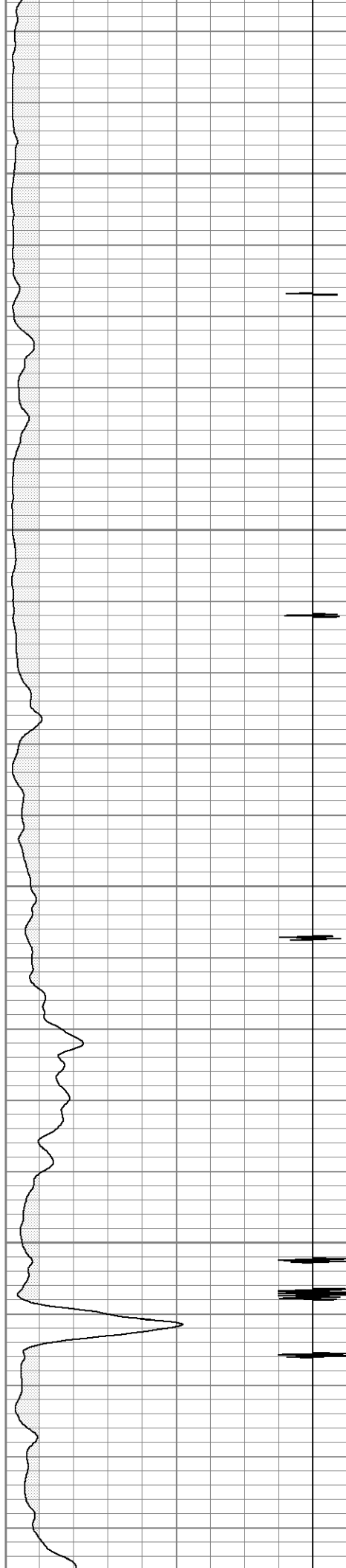


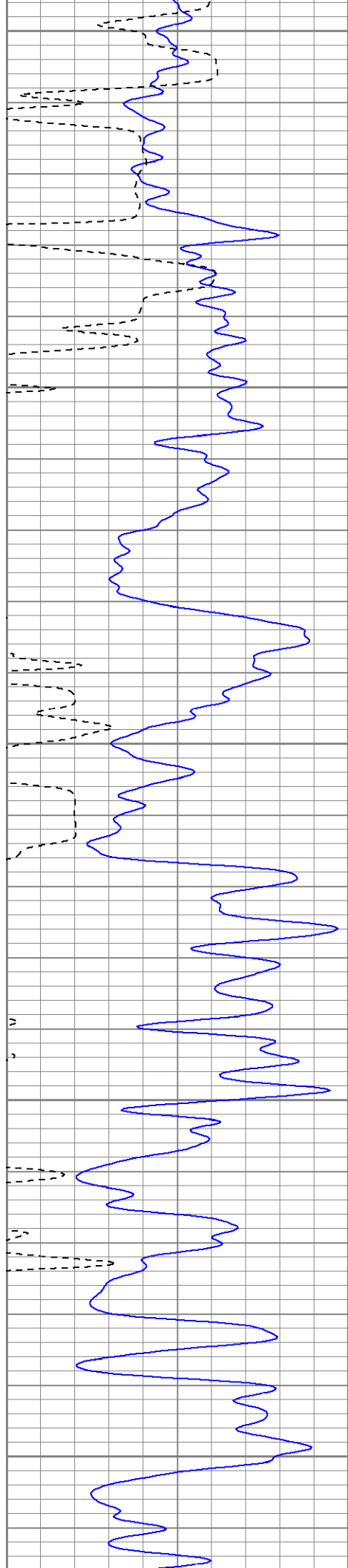
1750

1800

1850

1900





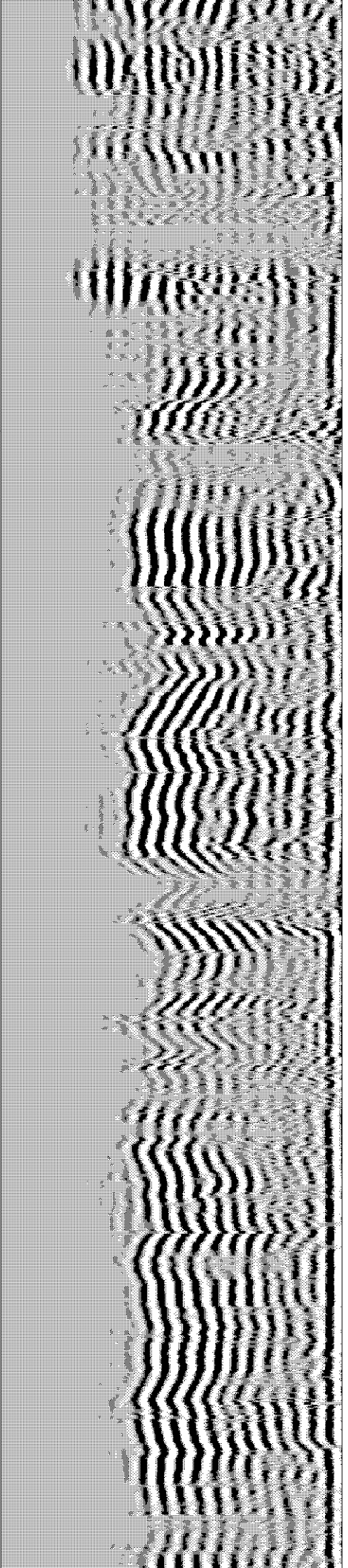
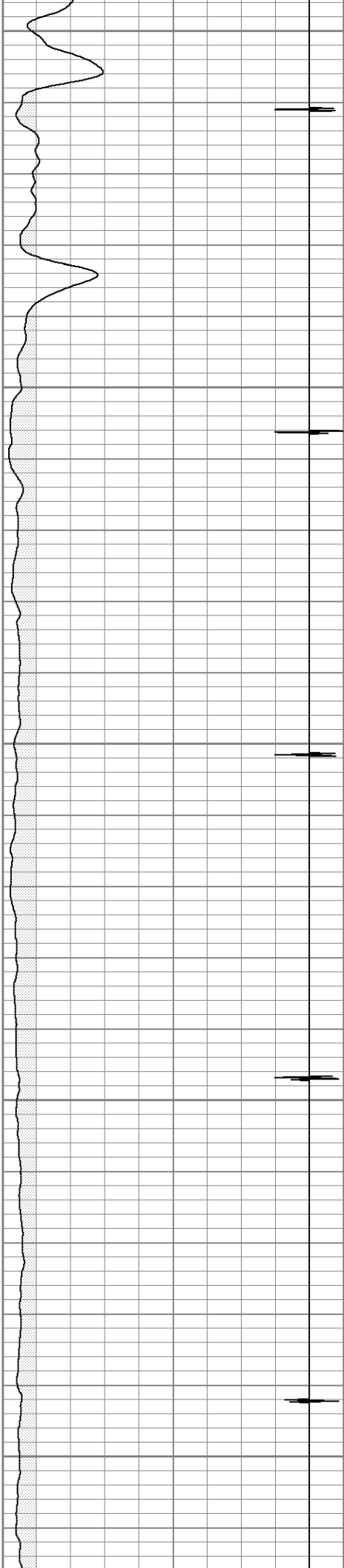
1950

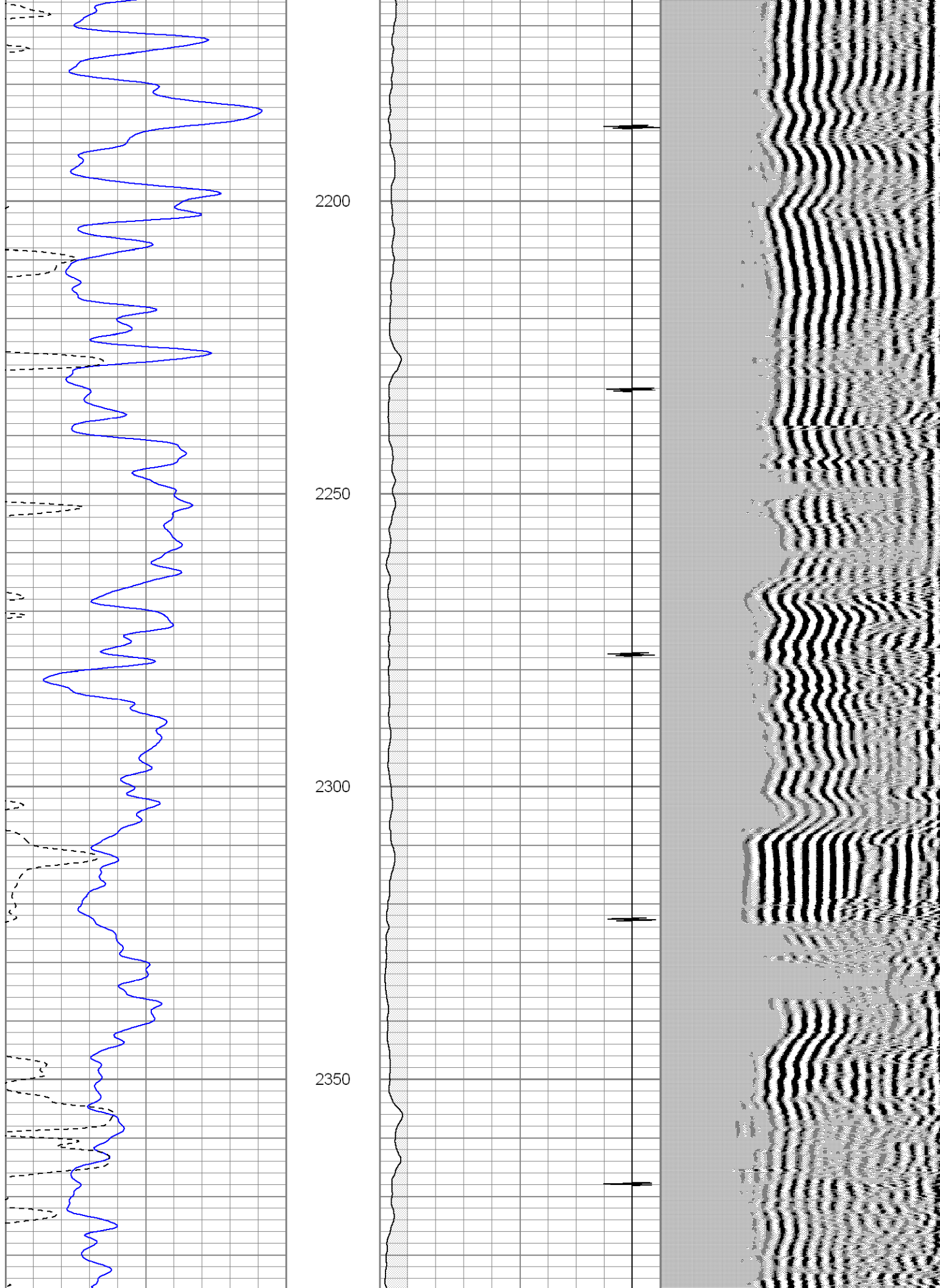
2000

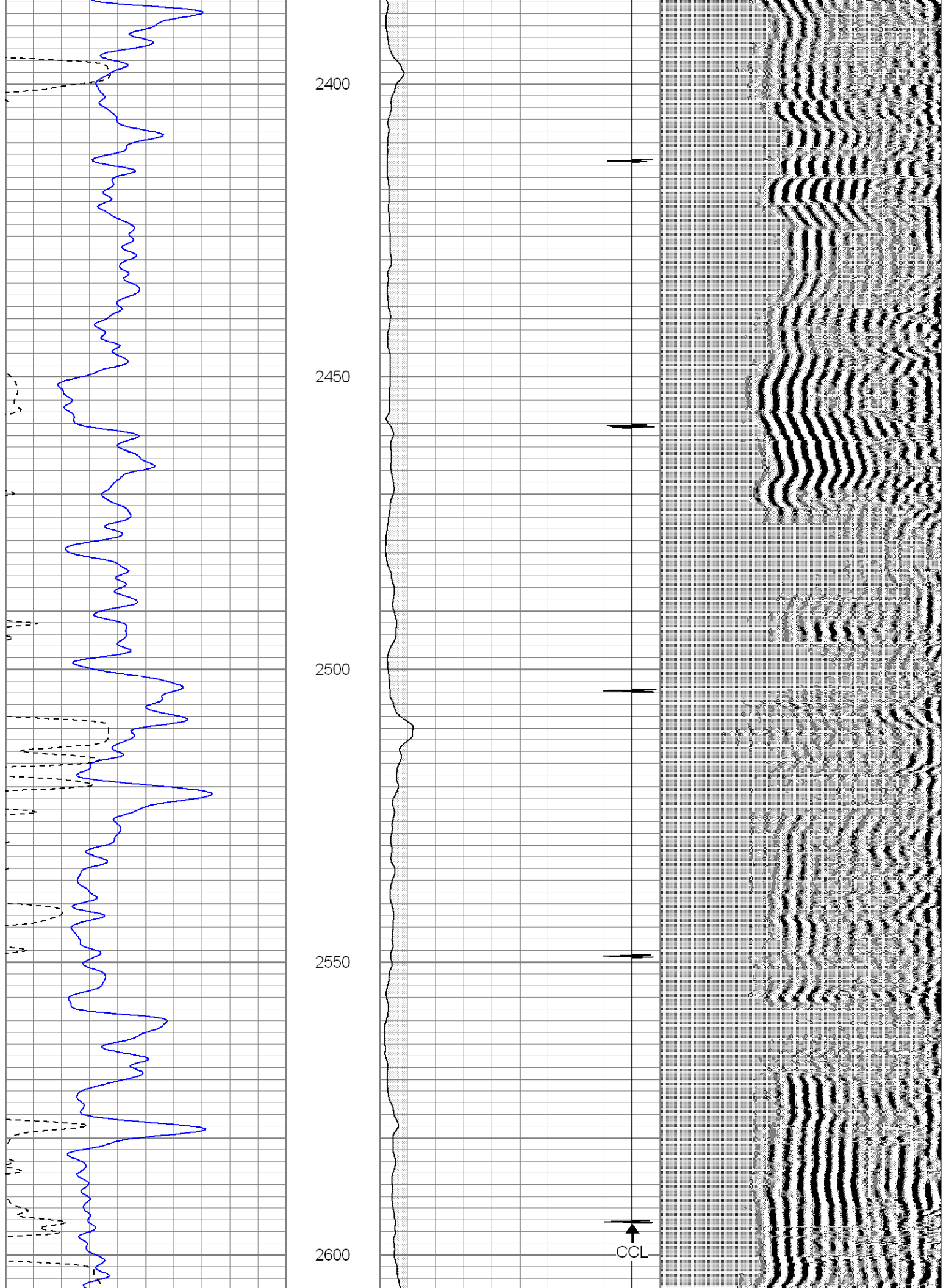
2050

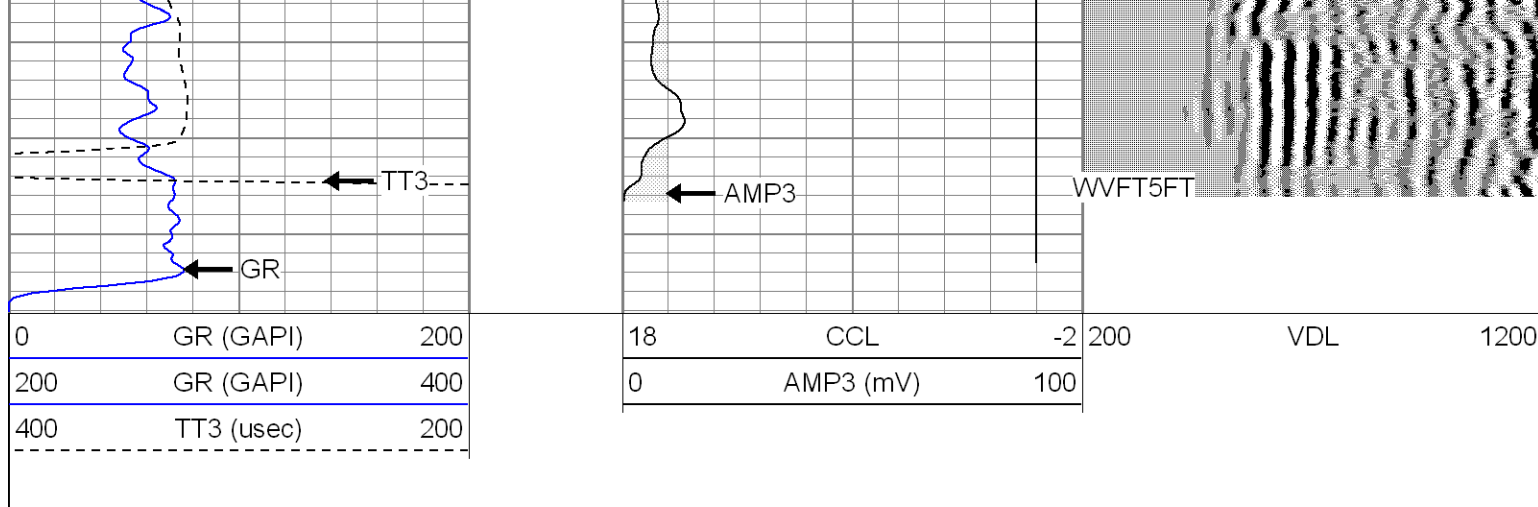
2100

2150





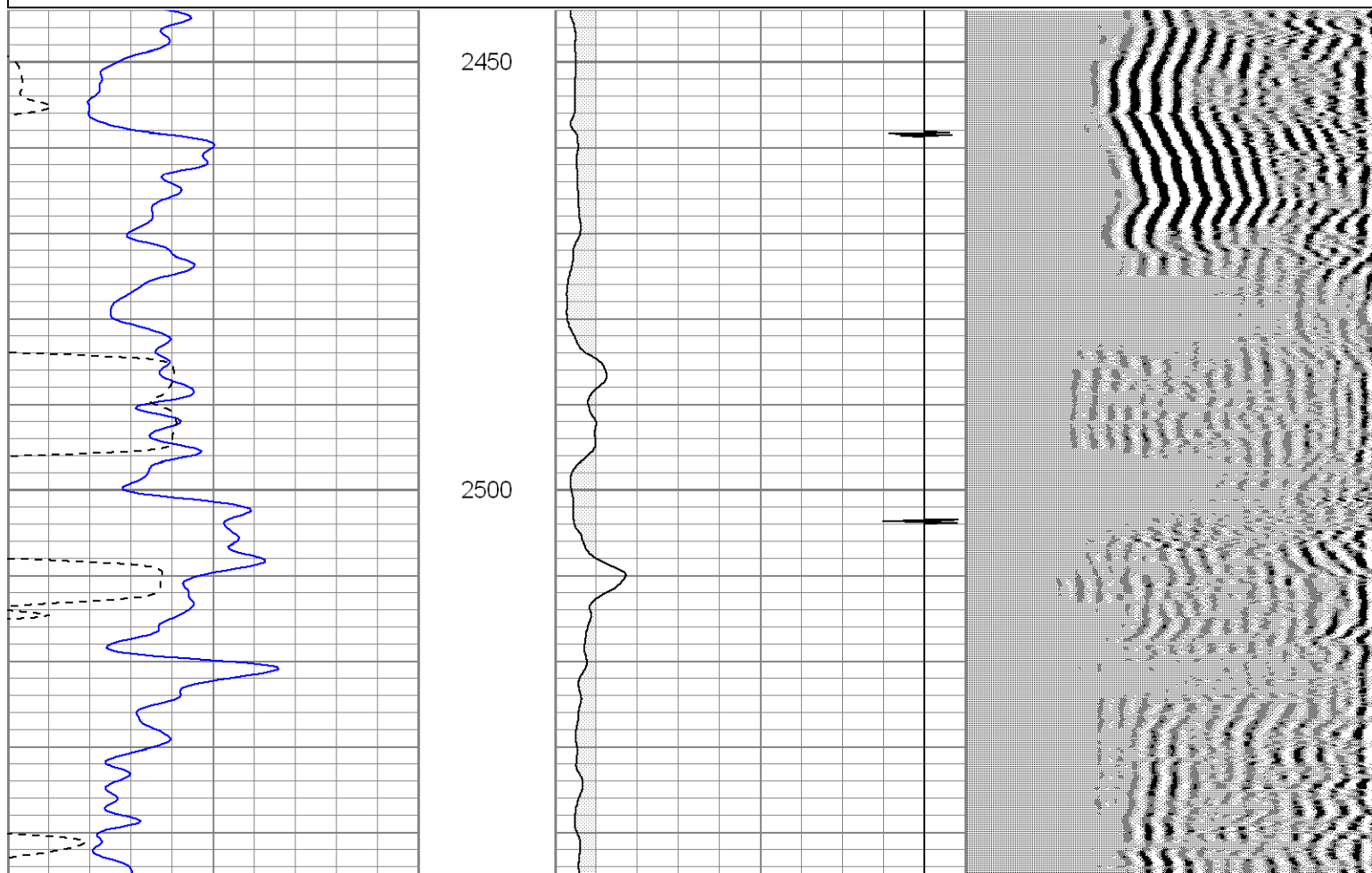


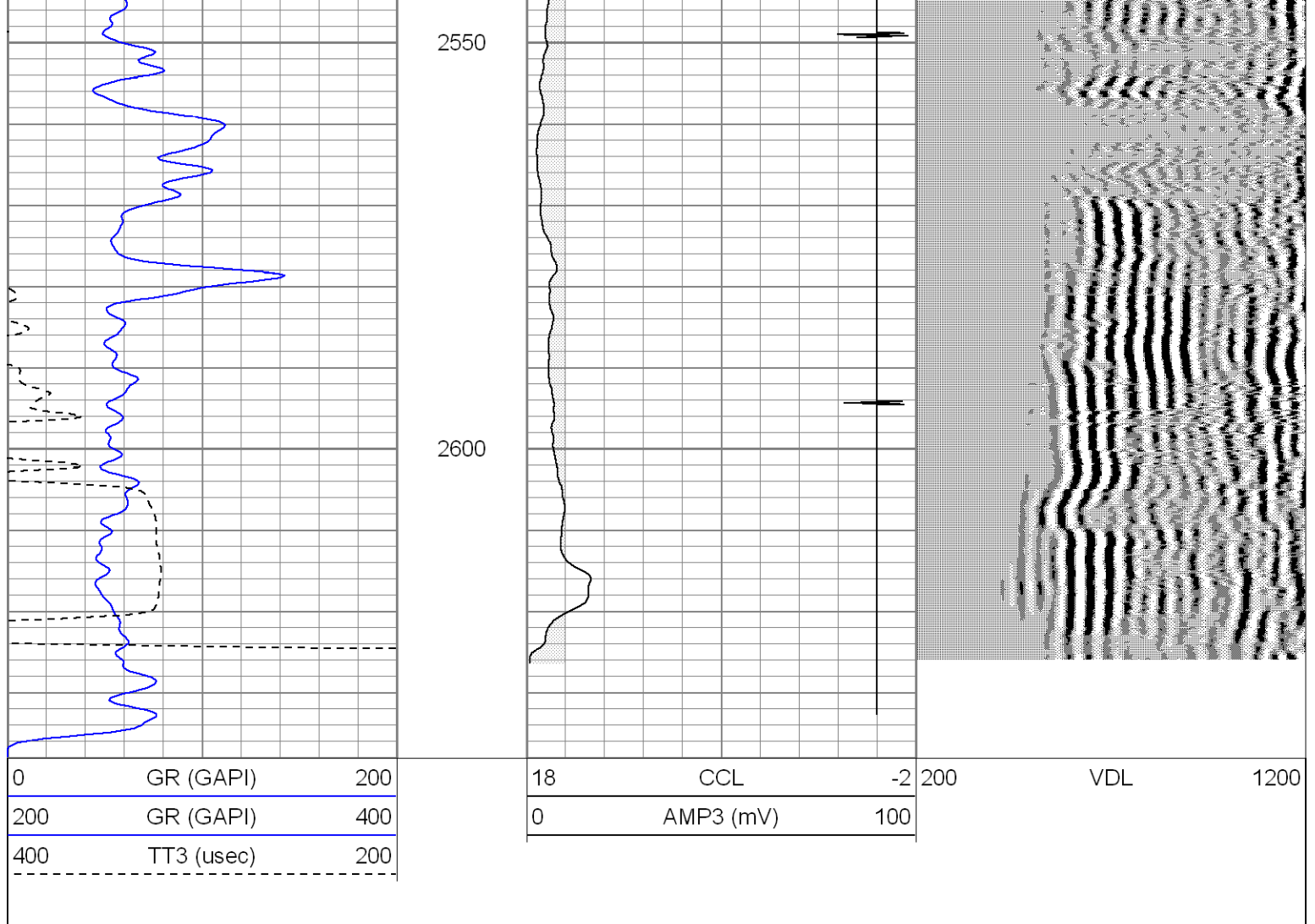


Repeat Section 0 PSI

Database File: hillranch31-16b.db
 Dataset Pathname: pass1.1
 Presentation Format: cblsec
 Dataset Creation: Thu Feb 04 09:27:28 2010 by Calc Open-Cased 071220
 Charted by: Depth in Feet scaled 1:240

0	GR (GAPI)	200	18	CCL	-2	200	VDL	1200
200	GR (GAPI)	400	0	AMP3 (mV)	100			
400	TT3 (usec)	200						





Calibration Report

Database File: hillranch31-16b.db
 Dataset Pathname: pass3
 Dataset Creation: Thu Feb 04 08:37:51 2010 by Log Open-Cased 071220

Gamma Ray Calibration Report

Serial Number: 081014
 Tool Model: 275D_INC
 Performed: Mon Feb 01 10:29:58 2010

Calibrator Value: 200.0 GAPI

Background Reading: 50.0 cps
 Calibrator Reading: 250.0 cps

Sensitivity: 1.0000 GAPI/cps

Inclinometer Calibration Report

Performed: Mon Feb 01 10:30:00 2010

	Low Read.	High Read.	Low Ref.	High Ref.	
X Accelerometer	-3589.40	3580.00	-1.00	1.00	gee
Y Accelerometer	-3673.00	3520.20	-1.00	1.00	gee
Z Accelerometer					

Serial Number:	080321	
Tool Model:	ProbeRadial	
Calibration Casing Diameter:	5.500	in
Calibration Depth:	987.339	ft

	Raw (v)		Calibrated (mv)		Results	
	Zero	Cal	Zero	Cal	Gain	Offset
3'	-0.040	1.700	-1.000	85.000	49.425	0.977
CAL	0.013	0.505				
5'	-0.040	1.400	-1.000	85.000	59.722	1.389
SUM						
S1	0.014	1.237	0.000	85.000	69.520	-0.975
S2	0.014	1.200	0.000	85.000	71.703	-1.014
S3	0.014	1.296	0.000	85.000	66.287	-0.939
S4	0.014	1.418	0.000	85.000	60.512	-0.823
S5	0.014	1.586	0.000	85.000	54.064	-0.752
S6	0.014	1.611	0.000	85.000	53.215	-0.752
S7	0.015	1.559	0.000	85.000	55.034	-0.805
S8	0.014	1.367	0.000	85.000	62.846	-0.892

[illegible]